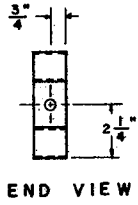
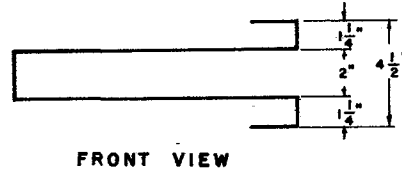
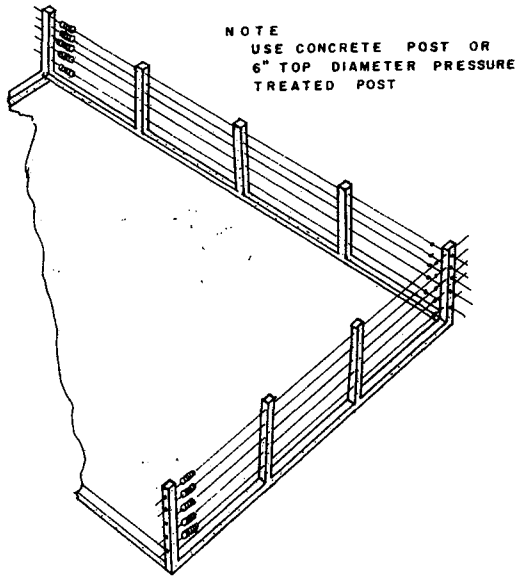
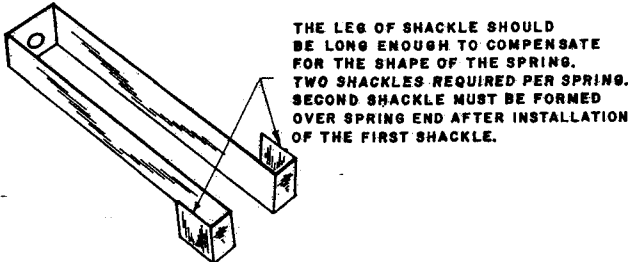
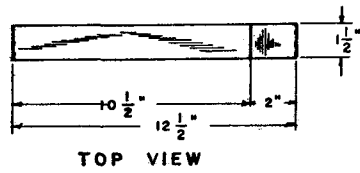
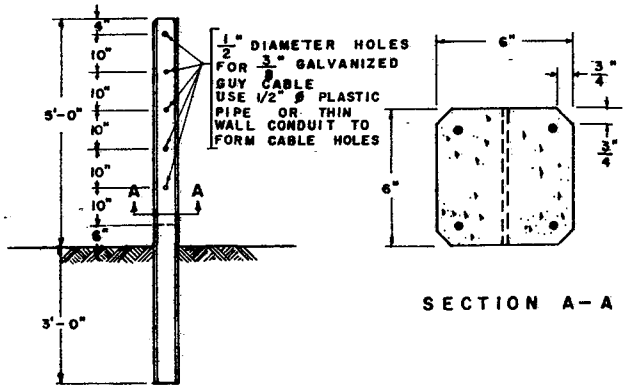


NOTE:  
SHACKLES SHOULD NOT BE MADE TILL AFTER SPRINGS ARE SECURED

NOTE  
1/2" GALVANIZED EYE BOLTS FOR USE ON END POSTS



NOTE:  
OUTSIDE DIAMETER OF AUTOMOBILE SPRING FROM SALVAGE SHOULD BE A MINIMUM OF 4"



NOTE:  
4 NO. 3 (3/8") RE-BARS PLACED IN THE CORNERS AND COVERED WITH A MINIMUM OF 3/4" OF CONCRETE AT ALL POINTS.

THE LARGEST SIZE AGGREGATE SHOULD BE 1/2"

BEVEL CORNERS BY PLACING 1/2" TRIANGULAR STRIP IN FORM

SCALE: 3" = 1'-0" UNLESS OTHERWISE NOTED.

CONCRETE POST  
SCALE: 1/2" = 1'-0"

BASED ON: MISS. STATE UNIV. PLAN NO. 5961A

CABLE FENCING		
MISS. '73	EX. 6162	SHEET 1 OF 1

## Disclaimer

This site makes available conceptual plans that can be helpful in developing building layouts and selecting equipment for various agricultural applications. These plans do not necessarily represent the most current technology or construction codes. They are not construction plans and do not replace the need for competent design assistance in developing safe, legal and well-functioning agricultural building system. The LSU Agriculture Center, the Mid-West Plan Service, the United States Department of Agriculture and none of the cooperating land-grant universities warranty these plans.