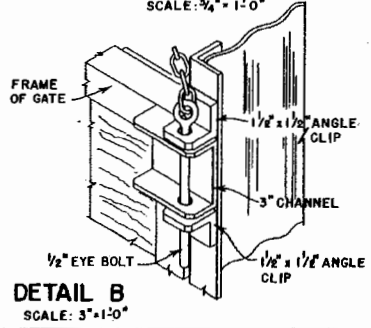
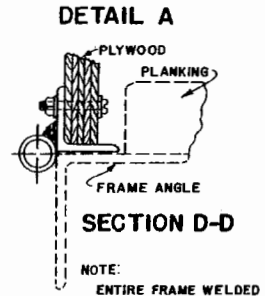
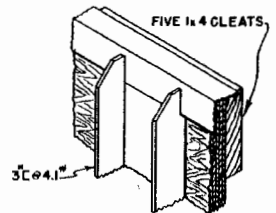
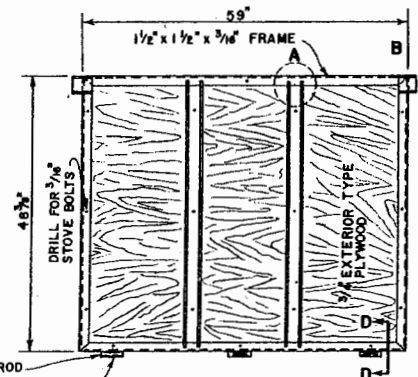


16 TO 20 GA. GALV. CORR. METAL  
26" WIDE  
6-PCS. REQD. 60" LONG.  
5-PCS. REQD. 72" LONG.  
FASTEN WITH 1/4" 20 THD. HEX. HEAD  
SELF-TAPPING SCREWS 1/2" LONG,  
SPACED 10" TO 12" APART. USE NO. 6  
DRILL FOR HOLES.

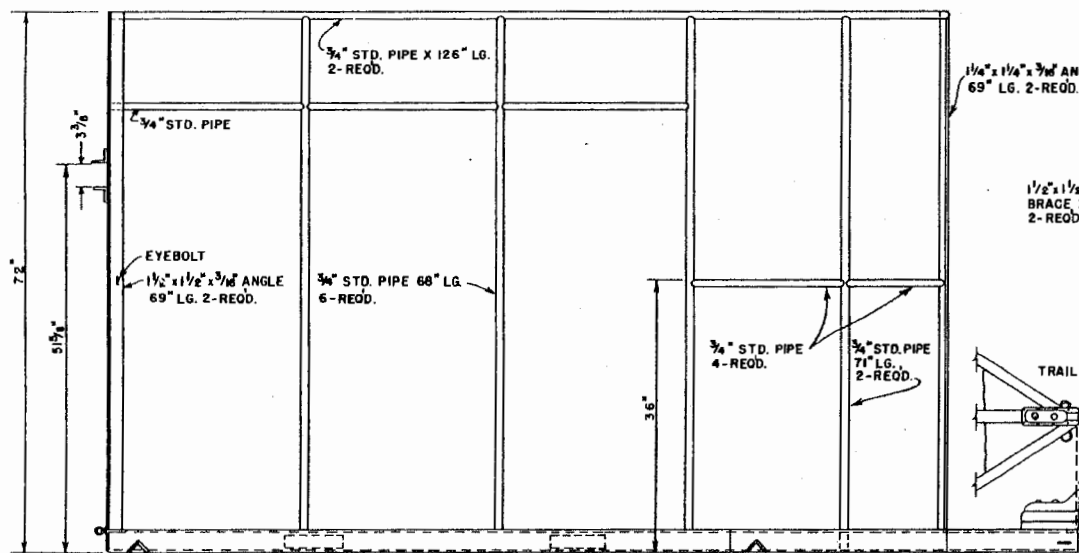


NOTE: CORRUGATED FILLER STRIP TO BE USED BETWEEN FENDERS AND BODY OF TRAILER. FASTEN FENDER TO FRAME OF TRAILER WITH 3/16" BOLTS.

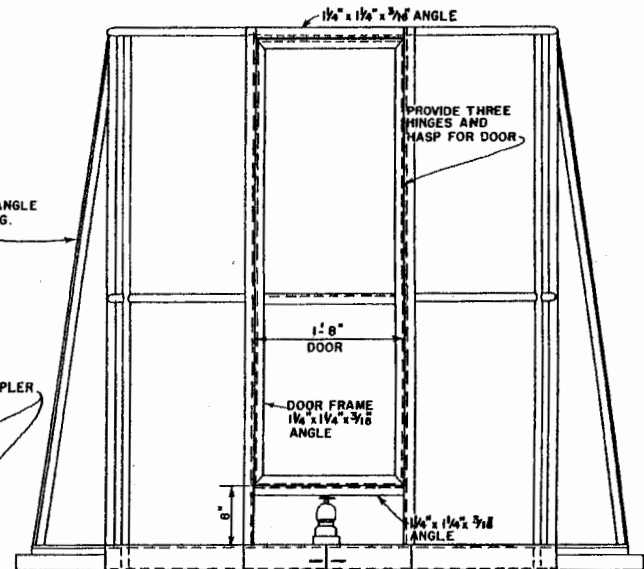
**LSU AgCenter**  
RESEARCH & EXTENSION

**TWO-HORSE TRAILER**  
FOUR WHEEL, TANDEM AXLE

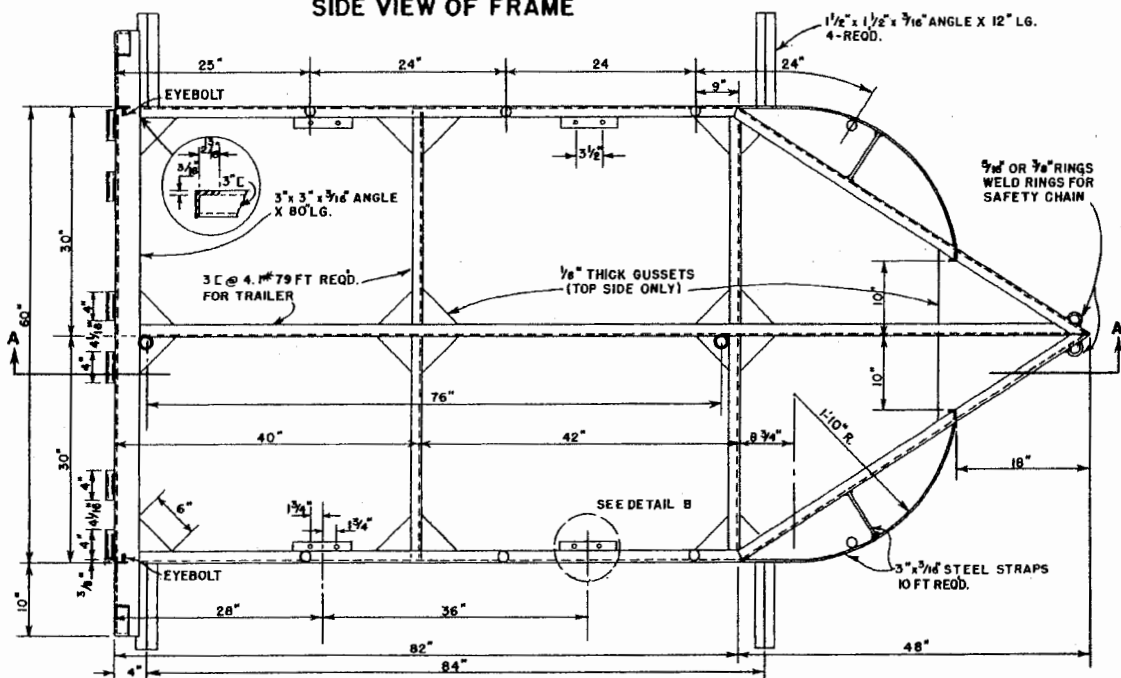
ORE. '62 EX. 5943 SHEET 1 OF 2



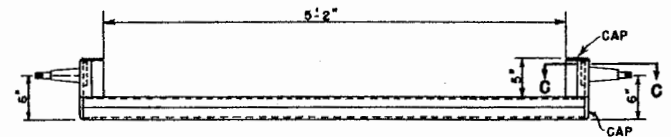
SIDE VIEW OF FRAME



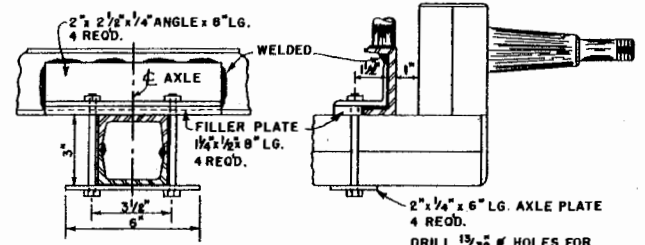
FRONT VIEW OF FRAME



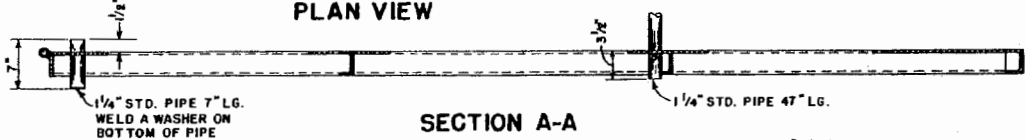
PLAN VIEW



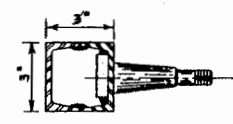
WHEEL AXLE 2-REOD  
WELDED CONSTRUCTION



DETAIL B  
SCALE: 3\"/>



SECTION A-A



SECTION C-C  
SCALE: 3\"/>

SCALE: 1:10 UNLESS OTHERWISE NOTED.



**TWO-HORSE TRAILER**  
FOUR WHEEL, TANDEM AXLE

ORE. '62 EX. 5943 SHEET 2 OF 2

## Disclaimer

This site makes available conceptual plans that can be helpful in developing building layouts and selecting equipment for various agricultural applications. These plans do not necessarily represent the most current technology or construction codes. They are not construction plans and do not replace the need for competent design assistance in developing safe, legal and well-functioning agricultural building system. The LSU Agriculture Center, the Mid-West Plan Service, the United States Department of Agriculture and none of the cooperating land-grant universities warranty these plans.