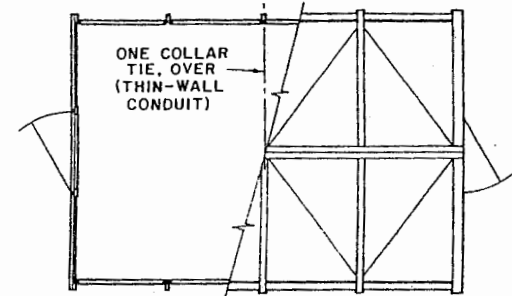


NO. 9 GALVANIZED WIRE TIES, TWISTED

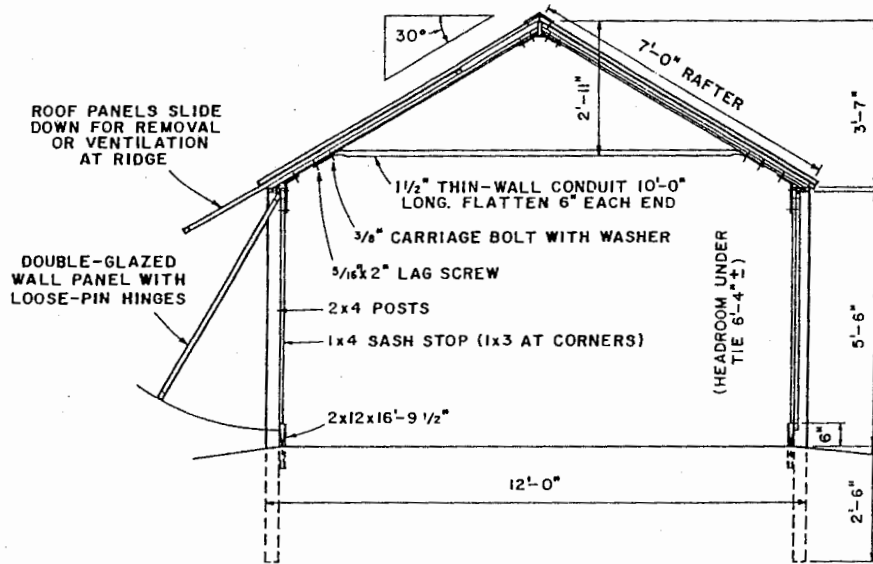
FRAMING ELEVATIONS

SCALE: 1/4"=1'-0"  
12" 0' 1' 2' 3' 4'



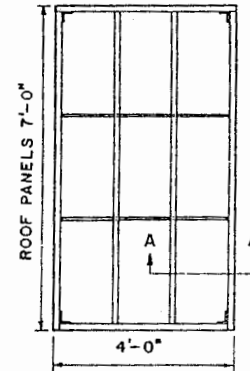
FRAMING PLAN

SCALE: 1/4"=1'-0"  
12" 0' 1' 2' 3' 4'



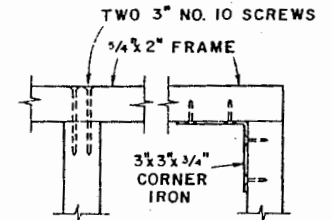
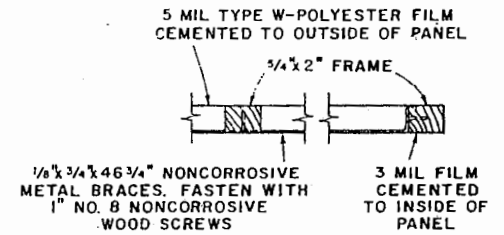
CROSS SECTION

SCALE: 1/2"=1'-0"  
12" 6" 0' 1' 2'



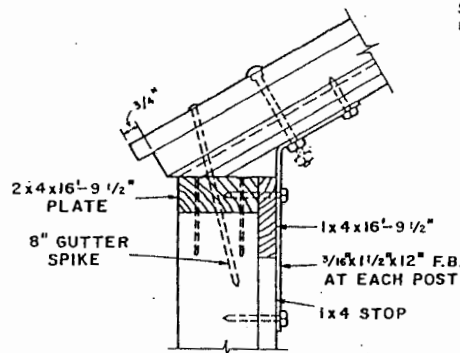
ROOF SASH PANEL

SCALE: 1/2"=1'-0"  
12" 6" 0' 1' 2'

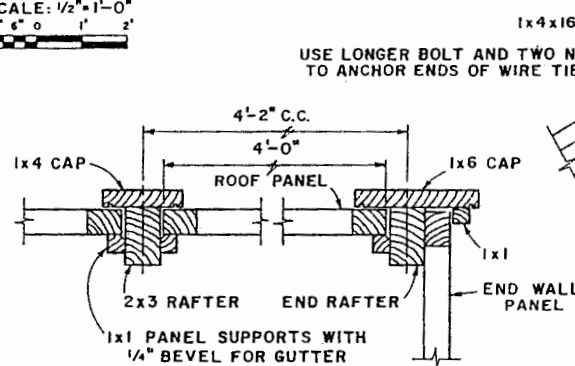


SECTION A-A

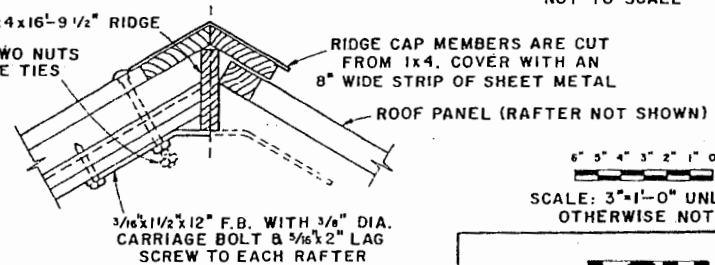
NOT TO SCALE



EAVE CONNECTIONS



RAFTER DETAILS



RIDGE DETAIL

6" 5" 4" 3" 2" 1" 0

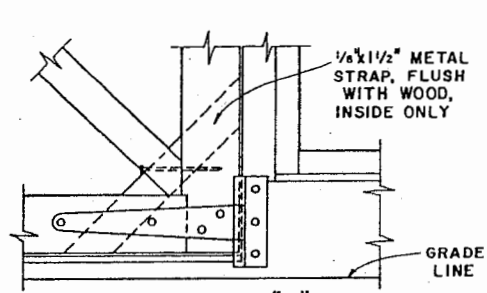
SCALE: 3"=1'-0" UNLESS OTHERWISE NOTED

NOTE:  
CONSULT LOCAL HEALTH AND BUILDING CODE AUTHORITIES BEFORE STARTING CONSTRUCTION.



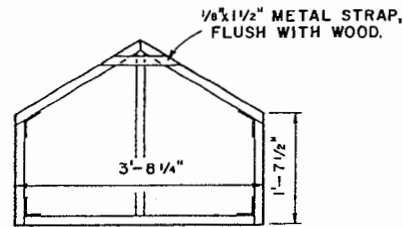
PLASTIC GREENHOUSE

USDA '76 6251 SHEET 1 OF 2

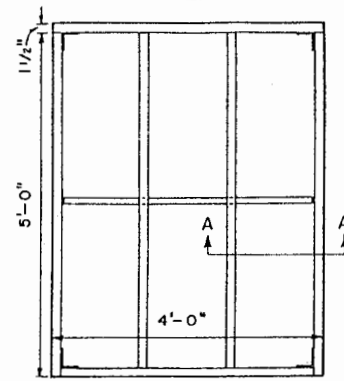


**DOOR DETAIL "C"**

SCALE: 3"=1'-0"  
6" 3" 4" 3" 2" 1" 0"



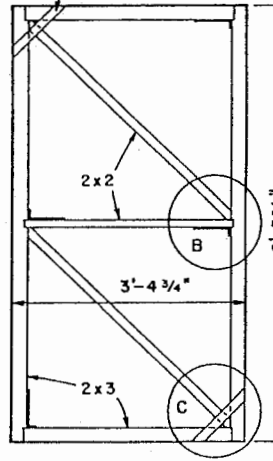
**GABLE SASH PANEL**  
TWO REQ'D



**SIDE WALL SASH PANEL**  
EIGHT REQ'D

1x1 STRIP, FULL LENGTH

1/8 x 1 1/2" METAL STRAP, FLUSH WITH WOOD, EACH SIDE.



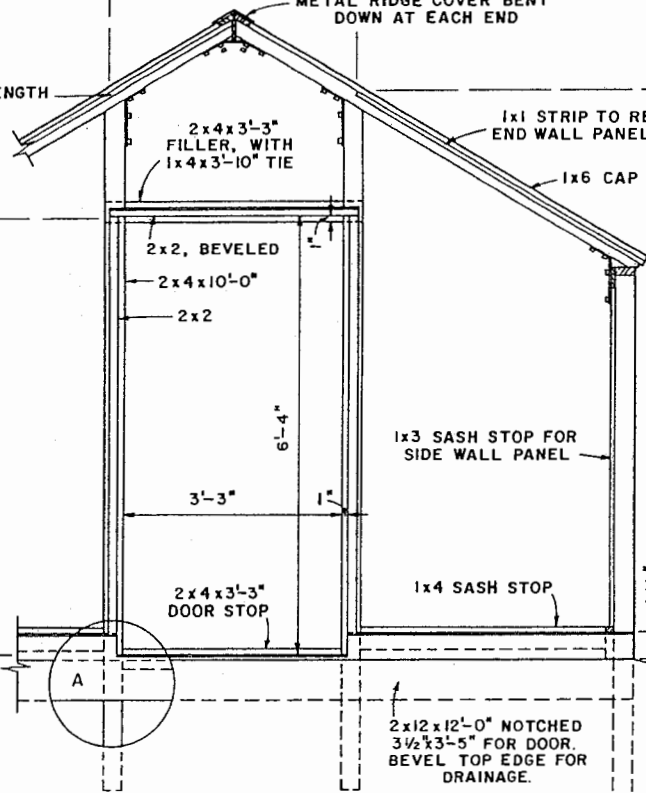
**DOOR PANEL**  
TWO REQ'D

APPLY FILM TO INSIDE FIRST. OUTER FILM SHALL EXTEND OVER TOP RAIL AND LAP THE TOP EDGE OF THE INNER FILM.

METAL RIDGE COVER BENT DOWN AT EACH END

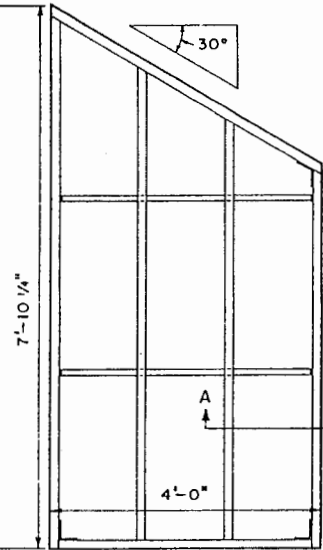
2x4 x 3'-3" FILLER, WITH 1x4 x 3'-10" TIE

1x1 STRIP TO RETAIN END WALL PANEL ONLY



**END WALL FRAMING**

2x12 x 12'-0" NOTCHED 3 1/2 x 3'-5" FOR DOOR. BEVEL TOP EDGE FOR DRAINAGE.



**END WALL SASH PANEL**  
FOUR REQ'D. TWO RIGHT & TWO LEFT

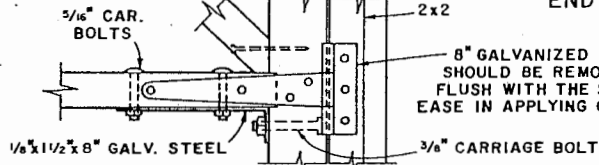
**NOTES:**

THE ROOF PANELS ARE HELD IN CLOSED OR PARTLY OPEN POSITIONS BY 6d DOUBLE-HEADED NAILS IN HOLES DRILLED THROUGH LOWER END OF RAFTER CAP INTO PANEL FRAME.

INSTALL RESILIENT WEATHER STRIPPING TO CLOSE THE SPACE BETWEEN THE PLATES AND ROOF PANELS.

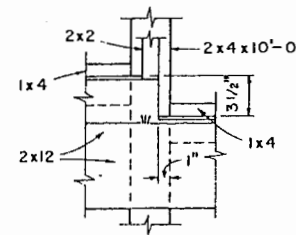
ALL WOOD PARTS TO BE TREATED, AFTER CUTTING, WITH A COPPER-NAPHTHENE PRESERVATIVE.

ALL METAL PARTS SHOULD BE OF NON-CORROSIVE METAL OR HOT-DIP GALVANIZED STEEL.



**DOOR DETAIL "B"**

SCALE: 3"=1'-0"  
6" 3" 4" 3" 2" 1" 0"



**SILL DETAIL "A"**

SCALE: 1 1/2"=1'-0"  
12" 9" 6" 3" 0"



SCALE: 3/4"=1'-0" UNLESS OTHERWISE NOTED



**PLASTIC GREENHOUSE**

USDA '76 6251 SHEET 2 OF 2

## Disclaimer

This site makes available conceptual plans that can be helpful in developing building layouts and selecting equipment for various agricultural applications. These plans do not necessarily represent the most current technology or construction codes. They are not construction plans and do not replace the need for competent design assistance in developing safe, legal and well-functioning agricultural building system. The LSU Agriculture Center, the Mid-West Plan Service, the United States Department of Agriculture and none of the cooperating land-grant universities warranty these plans.