

Louisiana Wetlands

What is a Wetland?

Wetlands are important to Louisiana. They are one of the most productive habitats on Earth when you look at the variety and amount of organisms they can support.

Wetlands provide habitats for wildlife and plants. Without wetlands, these living things would die.

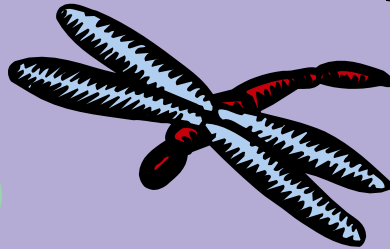
We should protect wetlands by keeping them clean and understanding the importance of these habitats to the world.



Wetland
A land that is wet



Habitat
A place that is home to a living thing



Did you know?

- The Louisiana black bear's claws are 9-12 inches long.
- Beavers can hold their breath for 12-15 minutes.



4-H Cloverbud Project Activity Guide



Character Connection

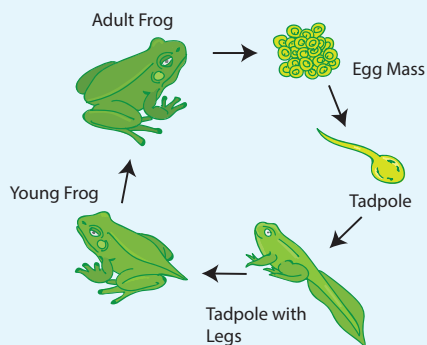
Respect... As we have learned, wetlands are important to Louisiana. When you visit wetlands, show respect for the animals and plants that live there.

- Pick up trash and litter.
- Plant native grasses.
- Follow hunting laws, and respect hunting land.
- Make sure you have left the land better than it was before you arrived.



Science Around You

Frogs live in water and on land. Wetlands are a perfect home for frogs. Can you think of animals that eat frogs?



Wetland Word Search

As you complete this word search, think about the variety of living things that live in wetlands. Find these words:

- Alligator
- Crane
- Cypress
- Grass
- Owl
- Raccoon
- Snake



C Z J I C Z F G E K F X V U O
 J Y A P G F R R F N B X K H E
 T L P M U A P A A R A T H R A
 H H Y R S N W C Q W E R A C F
 G N L S E Q T C A G O E C O R
 O N O Q Z S Q O E E T R M C I
 V M E K A N S O E Q B B E L I
 E J R J G Y Y N Z J W Q Y W K
 A L L I G A T O R X K U V O T
 P B W U P B C T Y N E J Y J N
 Y J O Q H H W B O B B G W U F
 D S X U Q Q C S S D T M K F Z
 R O Z N U D N F E K A N S G P
 A K P T G A C J C L L Z M U V
 P P U D C D H M P B N C F K J

Fill in each blank using these wetland words

carnivores pollution habitats barred owl alligator

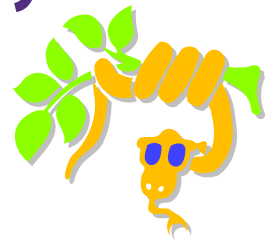
1. Alligators are _____, which means they eat other animals.
2. _____ is an environmental contamination by human-made waste.
3. Louisiana has wetlands which are the _____ for many native plants and animals.
4. The _____ is nocturnal and hunts prey at night.
5. Louisiana has the largest _____ population, and they are the largest reptiles in North America.

Answers: 1. carnivores, 2. pollution, 3. habitats, 4. barred owl, 5. alligator

Get Moving Physical Fitness Activity

Animal Antics

Directions: The leader will call out a series of animals, such as the ones shown below. Be creative and see how many ways you can move your body like the wetland animals.



alligator

beaver

turtle

frog

raccoon

crane

deer

bobcat

black bear

dragonfly

snake

owl

Learning About Food Chains

Wetlands are important to Louisiana. They are filled with living things that need food to be active, to grow and to reproduce. Almost all plants make their own food. Animals must eat other living things to get the food they need. Animals can be herbivores, omnivores or carnivores. A food chain is made up of plants and animals that are connected because they either eat or get eaten by each other.

Herbivores — animals that eat only plants.

Omnivores — animals that eat both plants and animals.

Carnivores — animals that eat animal flesh or meat.

Carnivore Word Scramble

ogd _____

tca _____

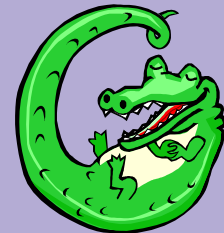
ioln _____

kesan _____

leas _____

harks _____

ANSWERS: dog, cat, lion, snake, seal, shark



Visit our website: www.LSUAgCenter.com

William B. Richardson, LSU Vice President for Agriculture
Louisiana State University Agricultural Center
Louisiana Agricultural Experiment Station
Louisiana Cooperative Extension Service
LSU College of Agriculture

Pub. 3390 (1M) 7/15

The LSU AgCenter and LSU provide equal opportunities in programs and employment.

References: Youth Wetlands Program — Wetland Webs 2013; National Wildlife Federation



Visit our website: www.LSUAgCenter.com/4hprojects

Louisiana 4-H is an educational program of the LSU AgCenter.