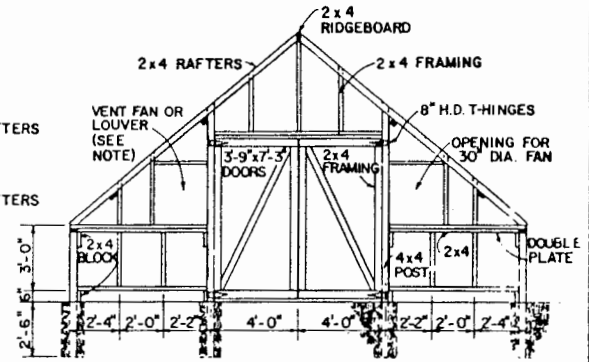
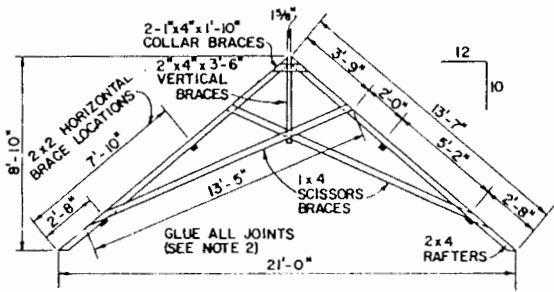


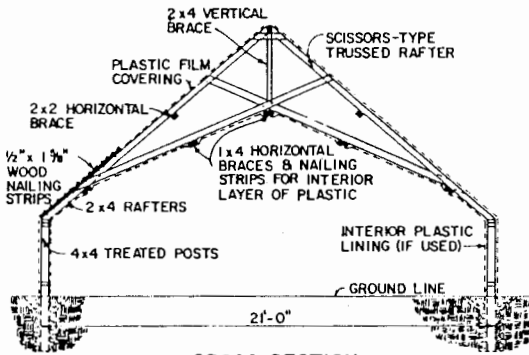
SIDE VIEW OF FRAMING



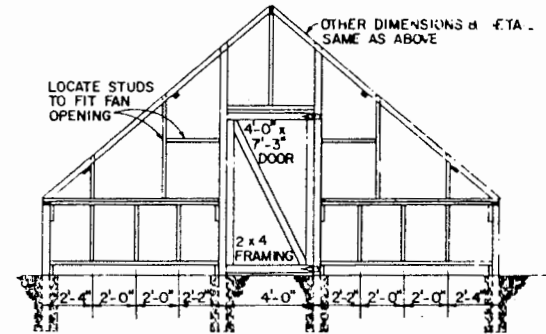
END VIEW OF FRAMING



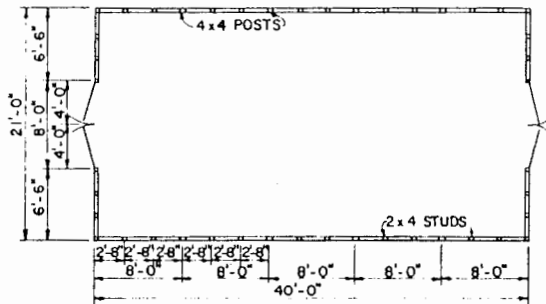
RAFTER DETAIL



CROSS SECTION



ALTERNATE END VIEW



FLOOR PLAN




NOTES:

1. IF 30" FAN FRAMES ARE TOO LARGE FOR OPENING PROVIDED, LOWER PLATE AND MOVE STUD AS REQUIRED, OR USE THREE 24" FANS AND PLACE ONE IN GABLE OVER DOORS, OR MAKE DOORS NARROWER. (ALSO SEE ALTERNATE END VIEW OF FRAMING.)
2. ALL JOINTS GLUED (USE A GOOD WATERPROOF WOOD GLUE) AND NAILED WITH 6-PENNY GALVANIZED SERRATED NAILS.
3. CONSULT LOCAL HEALTH AND BUILDING CODE AUTHORITIES BEFORE STARTING CONSTRUCTION.



UNLESS OTHERWISE NOTED

		
GREENHOUSE SCISSORS TRUSS		
VA	78	6311
		SHEET 1 OF 1

Disclaimer

This site makes available conceptual plans that can be helpful in developing building layouts and selecting equipment for various agricultural applications. These plans do not necessarily represent the most current technology or construction codes. They are not construction plans and do not replace the need for competent design assistance in developing safe, legal and well-functioning agricultural building system. The LSU Agriculture Center, the Mid-West Plan Service, the United States Department of Agriculture and none of the cooperating land-grant universities warranty these plans.