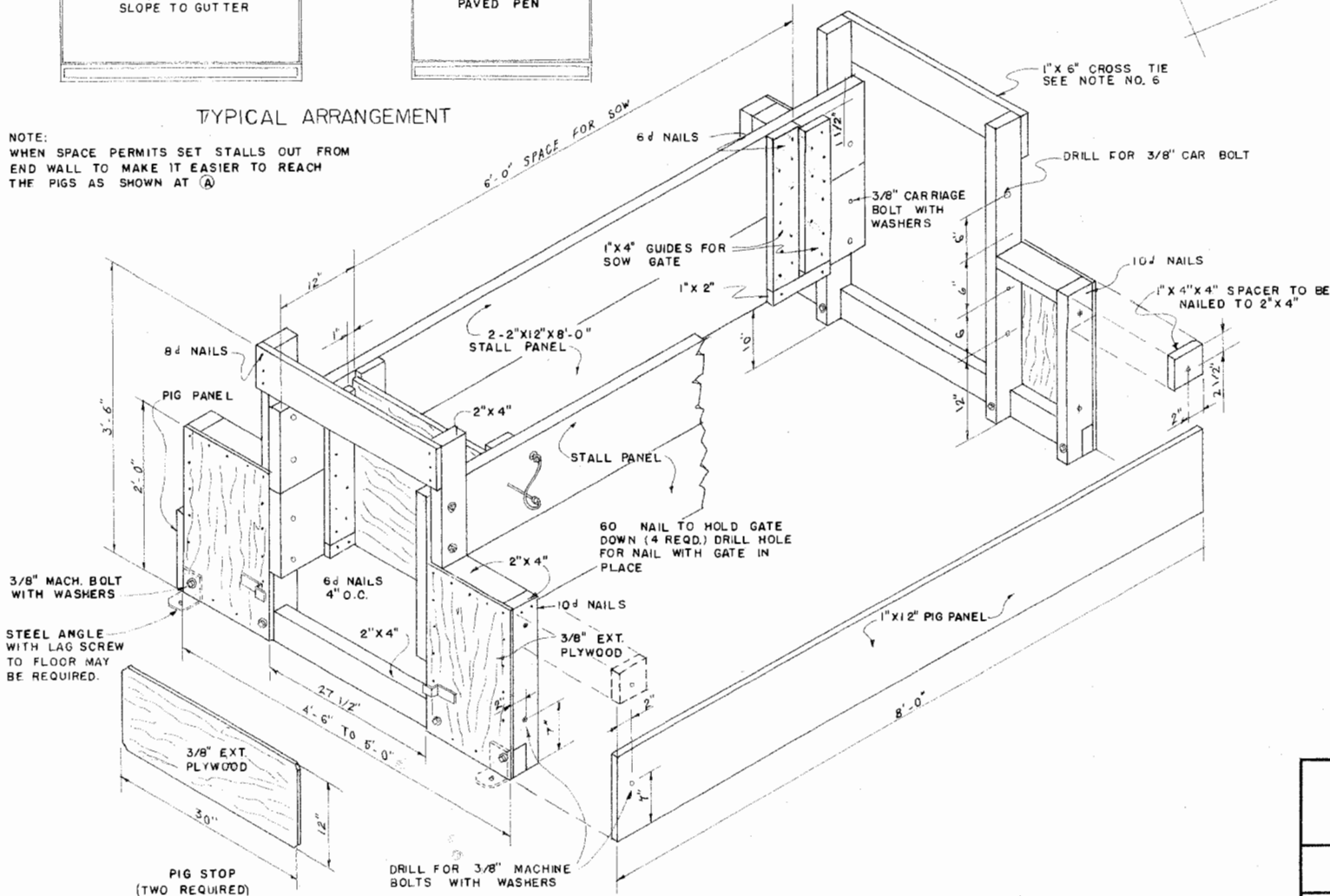


TYPICAL ARRANGEMENT

NOTE:  
WHEN SPACE PERMITS SET STALLS OUT FROM  
END WALL TO MAKE IT EASIER TO REACH  
THE PIGS AS SHOWN AT (A)

HEAD & TAIL PANELS



VIEW SHOWING CONSTRUCTION

NOTE:

1. 2"x4" UPRIGHTS AND BASE OF THE END FRAMES SHOULD BE TREATED WITH PRESERVATIVE.
2. STALLS MAY BE SET UP IN ANY SUITABLE BLDG. A CONCRETE FLOOR IS RECOMMENDED.
3. THE SOW SHOULD BE PLACED IN THE STALL SEVERAL DAYS BEFORE FARROWING SO SHE CAN BECOME ACCUSTOMED TO HER SURROUNDINGS.
4. SOWS ARE TAKEN OUT OF THE STALLS FOR FEED, WATER AND EXERCISE.
5. THESE STALLS MAY BE DISASSEMBLED FOR STORAGE BY UNBOLTING THE STALL SIDES AND PIG PANELS TO INSURE EASE OF REASSEMBLY IT IS ADVISABLE TO NUMBER THE PARTS OF EACH STALL.
6. IF THE STALLS ARE TO BE LEFT IN PLACE, THE 2"x4" UPRIGHTS NEED NOT EXTEND ABOVE THE STALL SIDES AND THE 1"x6" CROSS TIE WILL NOT BE NEEDED.



FARROWING STALL

ENGINEER	SCALE
DRAWN BY	SHEET   OF
TRACED BY	DATE
	NO. 5828

## Disclaimer

This site makes available conceptual plans that can be helpful in developing building layouts and selecting equipment for various agricultural applications. These plans do not necessarily represent the most current technology or construction codes. They are not construction plans and do not replace the need for competent design assistance in developing safe, legal and well-functioning agricultural building system. The LSU Agriculture Center, the Mid-West Plan Service, the United States Department of Agriculture and none of the cooperating land-grant universities warranty these plans.