

Warm Season Lawn Grasses

Warm-Season Grasses

- Warm-season grasses are adapted to all of Louisiana .
- Warm-season species slowly green up in the spring, grow best in the summer, and go dormant at the first sign of frost in the fall.

Warm Season Grasses

- Bermudagrass (Cynodon)
- Zoysiagrass (Zoysia)
- St. Augustinegrass (Stenotaphrum)
- Centipedegrass (Eremochloa)
- Carpetgrass (Axonopus a.)
 - Buffalograss (Buchloe) not grown
 - several Paspalum species

Bermudagrass



seed head

stolons



Bermudagrass

Adaptation and use

- Bermudagrass has many uses including lawns, parks, utility turf, and especially golf courses and athletic fields.
- It is the species used on athletic fields and golf courses in Louisiana.
- Its major limitation is its lack of cold and shade tolerance. A high maintenance choice.

Bermudagrass Cultivars

- Many cultivars of bermudagrass are used:

Vegetative: 'Tifway (419)', 'TifSport', 'GN-1', 'Tifgreen', 'Tifdwarf', 'Tifeagle', others...

Seeded: 'Sahara', 'Sunstar', 'Princess 77', 'Cheyenne', 'Jackpot', others...

- Vast differences in quality, color, texture, etc... exist between these cultivars and a turfgrass manager must decide which cultivar is best suited for their site based on its characteristics.

Centipedegrass



Centipedegrass

Description

- Centipedegrass is a low-growing, coarse-textured species that is adapted for use in low maintenance situations.
- It is often referred to as lazy man's grass due to its less frequent mowing, fertilization, and pest requirements.

Centipedegrass

Description

- Centipedegrass prefers acidic soils (pH<6), can tolerate moderate shade, and prefers a mowing height of 1 to 2 inches.
- However, it does not tolerate traffic, compaction, heavy shade, or cold weather and is sensitive to many commonly used herbicides.

Centipedegrass

Adaptation and use

- Centipedegrass is grown across the state of Louisiana.
- It is used widely on home & commercial lawns, roadsides, cemeteries, and any other low maintenance areas.
- Very popular.

Centipedegrass

Establishment and Management

- Centipedegrass is most often established by seed or sod- especially by sod.
- It is seeded at a very low rate of 1/4 to 1/3 lbs seed/1000 ft². It may take 2 to 3 years to fully establish from seed.
- As an old saying goes, “The first year it sleeps, the second year it creeps, and the third year it leaps!”

Zoysiagrass

Seed head



Stolon



Hairy
ligule



Zoysiagrass

Description

- There are three major species of zoysiagrass suitable for turf. They are:
 - Japanese lawngrass (*Zoysia japonica*)
 - Mascarenegrass (*Zoysia tenuifolia*)-not grown.
 - Manilagrass (*Zoysia matrella*)
- Japanese lawngrass and ‘Emerald’ account for most of the Zoysiagrass grown in LA.
 - ‘*Emerald*’ is a hybrid between *Z. japonica* and *Z. tenuifolia*

Zoysiagrass

Adaptation and use

- Zoysiagrass produces a low-growing, dense turf that is very wear-resistant.
- Its leaves are stiff and hard to mow without a sharp lawn mower.
- Does not like compact soils.
- Zoysiagrass is well adapted to all of the state. A high maintenance choice.

Zoysiagrass

Establishment and Management

- Zoysiagrass can be planted vegetatively either by sod or by plugs on 12” centers. Seeded types are less attractive.
- It is generally slow to establish taking 2 to 3 years to fill in when plugged.
- Newer cultivars are quicker to establish and can reach full coverage in one year.
 - El Toro spreads quite fast.

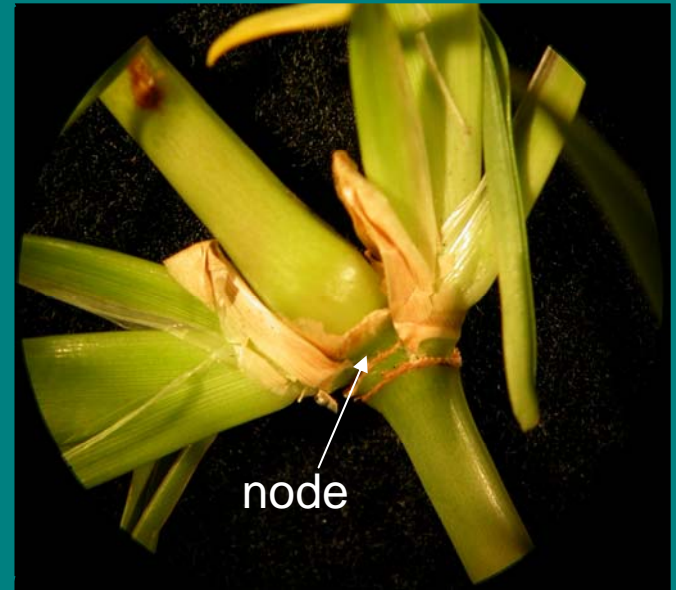
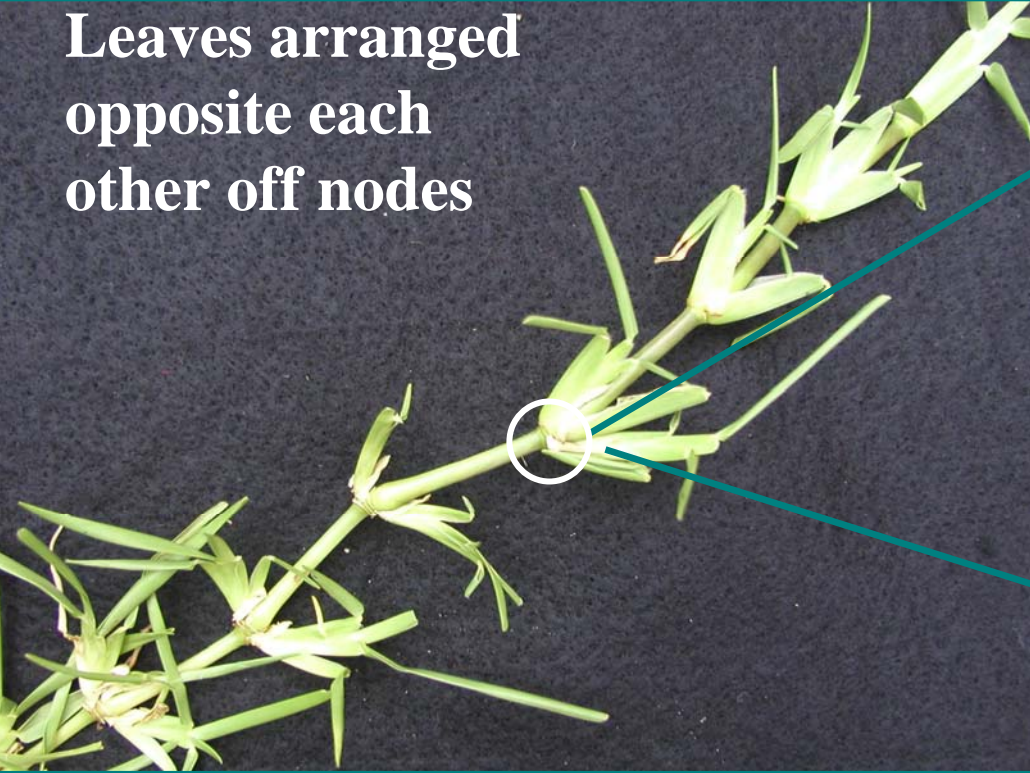


St. Augustine grass

***Stenotaphrum
secundatum***

St. Augustinegrass

Leaves arranged
opposite each
other off nodes



seed head



St. Augustinegrass

Description

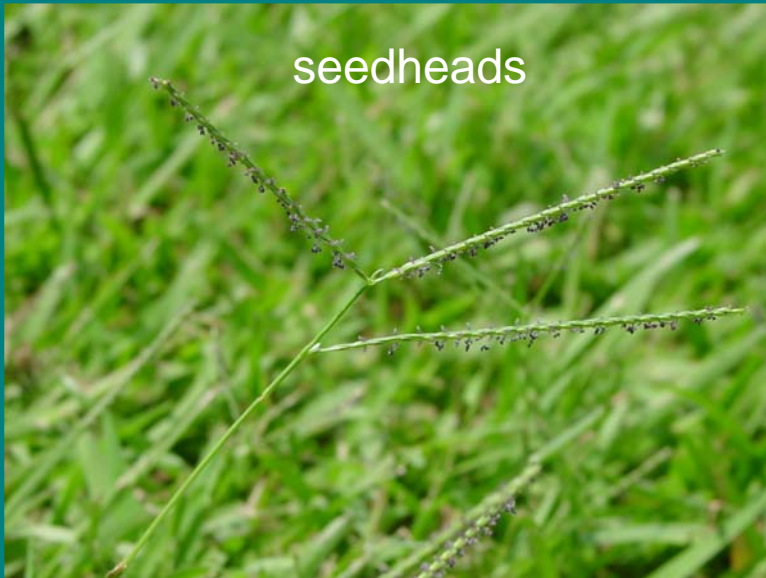
- St. Augustinegrass is a fast growing coarse-textured species with medium to dark green color.
- In fact, it exhibits the coarsest leaf texture of all grasses grown in Louisiana.
- Fast growing.
- Pest prone.

St. Augustinegrass

Adaptation and use

- St. Augustinegrass is most adapted to warm, humid areas and generally grows best in fertile, well-drained soils, but is not fussy.
- It has excellent tolerance to heat, shade, and salt.
- However, it has the lowest cold tolerance of all the warm season species grown except Seashore paspalum.

Carpetgrass



Carpetgrass

Description

- Carpetgrass is a slow, low-growing, coarse textured turfgrass adapted for low maintenance situations.
- It is similar in general appearance to centipedegrass except that it produces a crabgrass-like seedhead that can be unsightly.
- Looks like 'starving St. Augustine'.

Carpetgrass

Adaptation and use

- Carpetgrass grows well in full sun to moderate shade and can tolerate wet, acidic conditions.
- It has poor tolerance to cold, drought, salt, and traffic.
- Carpetgrass is primarily found on low-maintenance sites.
- Blends well with centipede.

Carpetgrass

Establishment and Management

- Carpetgrass is primarily seeded and rarely vegetatively planted.
- Carpetgrass is similar to centipedegrass in that it requires very little maintenance.
- Very few pesticides list carpetgrass on their label making pest or weed control very limited.

Cold Tolerance

HIGH

Buffalograss

Zoysiagrass(some)

Bermudagrass

Centipedegrass

Seashore paspalum

LOW

St. Augustinegrass

Shade Tolerance

HIGH St. Augustinegrass
Zoysiagrass (some)
Centipedegrass

LOW Seashore paspalum
Bermudagrass
Buffalograss

Fertility Requirements

HIGH Bermudagrass

St. Augustinegrass

Zoysiagrass

Seashore paspalum

Centipedegrass

Buffalograss

LOW

Carpetgrass

A magic grass

-one that needs little water, grows
by itself ; seldom needs mowing ;
holds up in heavy use or
shade.....

simply does not exist .

Selecting turf species

- leaf texture
 - coarse to very fine
- shade tolerance
- wear tolerance
- genetic color
 - light green to blue-green
- cold / heat tolerance
- growth / establish rate
- pest resistance
 - insects, diseases
- thatch production
- drought resistance
 - tolerance
 - avoidance
- water use efficiency
- nutrient use efficiency
- your needs vs wants
- **COST & AVAILABILITY**

The End

