

LSU AgCenter Franklin Parish Quarterly Report

Report to Stakeholders July – September 2022



ABOUT THE LSU AGCENTER

The LSU AgCenter is dedicated to providing innovative research, information, and education to improve people's lives. Working in a statewide network of parish extension offices, research stations and academic departments, the LSU AgCenter helps Louisiana citizens make the best use of natural resources, protect the environment, enhance agricultural enterprises, and develop human and community resources.

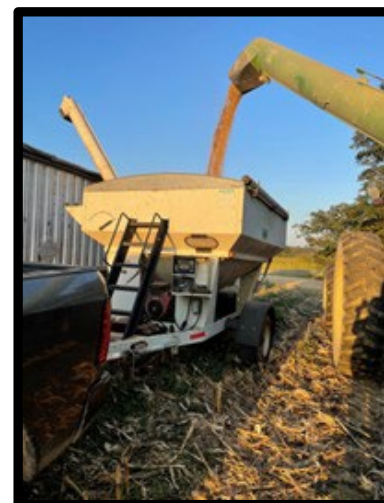
Agriculture and Natural Resources – Carol Pinnell-Alison

It was a difficult production year for Franklin Parish producers. The year started with increased production costs followed by a drought with hot temperatures in June and July and at harvest rain for over two weeks in August. Accumulations of over twenty inches of rain were recorded in some places. The rains have resulted in reduced yields, quality discounts and some fields were not worth harvesting due to damage.

Franklin Parish producers planted this year 70,666 acres of corn, 17,914 acres of cotton, 1,469 acres of rice, 257 acres of grain sorghum, 83,557 acres of soybean, 2,304 acres of sweet potatoes, and 6,062 acres of wheat. Franklin Parish ranked first in corn acreage planted, third in cotton acres planted, and sixth in soybean acres planted.

The corn and soybean core block variety on-farm demonstrations were harvested on the Campbell farm. The corn demonstration was harvested before the rain, but the soybean demonstration was harvested after the rain. The corn yield was down by about seven percent from last year. The soybean demonstration had yield loss and severe damage due to the rain.

A presentation was given to the Master Gardener class in St. Joseph on pesticide safety.



Soybean Core Block Harvest

FRANKLIN PARISH EXTENSION OFFICE

Address:

6562 Main Street
Winnsboro, LA 71295

Phone: 318-435-7551

Fax: 318-435-8216

Email: franklin@agcenter.lsu.edu

Website: www.lsuagcenter.lsu.edu

Office Hours:
8:00 a.m. – 4:30 p.m.

Social Media:

www.facebook.com/FranklinParish4-H

OFFICE STAFF:

Carol Pinnell-Alison
County Agent/Parish Chair
cpinnell-alison@agcenter.lsu.edu

Quincy Vidrine
Area Nutrition Agent
qvidrine@agcenter.lsu.edu

Krissten Medlin
SNAP ED Nutrition Educator
kmedlin@agcenter.lsu.edu

Amy Thornton
Administrator Coordinator
athornton@agcenter.lsu.edu

PROGRAMS

Agriculture and Natural Resources

- Aquaculture
- Animal Production
- Crop Production
- Horticulture/Lawn and Garden Pest Management

4-H and Youth Development

- Citizenship/Leadership
- Science, Engineering, and Technology (SET)
- Healthy Living
- Life Skills

Family and Consumer Sciences (FCS)

- Nutrition and Health
- SNAP ED

4-H Youth and Family Development

Late summer is the time livestock show preparation begins with validations and checking possession dates of animals to be shown either at The Louisiana State Fair or the LSU AgCenter District and State Shows.

Franklin Parish has two 4-H members Samantha Shelton and Eli Rogers that were selected this year to be on the State 4-H Executive Board. We also have Neal West our long-time shooting sports volunteer leader as an Inductee to the Louisiana 4-H Hall of Fame.

4-H monthly club meetings are being held, club officers are being elected and activities are being planned.

Family and Consumer Science (FCS) – Quincy Vidrine Nutritional Educator – Krissten Medlin

The Franklin Parish FCS Advisory Leadership Council listed having community partners and agencies come together to network and provide a menu of services to the community as a “critical need”. To eliminate the gap that existed between community partners, and the general public the Franklin Parish Healthy Community Coalition coordinated the Health Resource Expo which took place in September at the Jack Hammons Community Center in Winnsboro. Thirty-eight agencies that service the parish participated in this inaugural event. Over 47 residents of Franklin parish attended. The coalition intends to make this an annual Fall event in Franklin Parish.

To celebrate National Ice Cream Month, LSU AgCenter Nutrition Agent, Quincy Vidrine and Teen Chef/Franklin Parish 4-H youth volunteers conducted a hands-on “ice cream in a bag” workshop for youth and adults at the Crowville Farmer’s Market. Using simple ingredients such as cream, vanilla, sugar, salt and ice – participants conducted their very own science experiment and made some cool and refreshing ice cream to snack on!

Teen Cuisine Fall Session kicked off in Crowville with herb identification and lots of food prep going on! Seven teens from Crowville and surrounding areas committed to participating in the Teen Cuisine 4-H Special Project Club for the 2022-23 school year. The first session had a horticulture lesson presented by Area Horticulture Agent, Marcie Mize Wilson and food safety and culinary instruction from FCS Area Nutrition Agent, Quincy Vidrine. The youth learned about herbs, tasted some of them and used them in several recipes.

Area Assistant Horticultural Agent – Marcie Mize Wilson Serving: Franklin, Catahoula, Concordia, Tensas, Madison, and East Carroll Parishes

In July, booths were set up at both the Gilbert and Crowville Farmer’s markets where information and opportunities were distributed, including the Fall Vegetable Planting guide, general LSU AgCenter horticulture publications, Master Gardener Class sign-up sheet, contact info, a tomato seed saving demonstration, and free heirloom seed samples from the North Louisiana Seed Preservation Program.

On September 15, Marcie Wilson collaborated with Quincy Vidrine, Area Nutrition Agent, at the Teen Cuisine Club Meeting in Crowville. The topic was Cooking with Herbs where Marcie discussed different types of herbs that can be grown in Louisiana, and also conducted an herb ID challenge, and an herb seed planting demo.



Krissten Medlin and Quincy Vidrine manning a booth at Health Resource Expo recently held in Winnsboro.



Teen Cuisine



Marcie Mize Wilson, Area Horticultural Agent assisting clientele at the Gilbert Farmer’s Market



For the latest research-based information on just about anything, visit our website:

LSUAgCenter.com