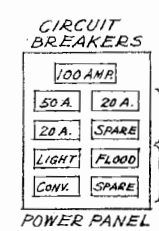


- GENERAL NOTES:**
- DESIGN LOADS  
LIVE ROOF LOAD - 20 LB. PER SQ. FT.  
BINS - 6' DEPTH OF WHEAT  
WIND - 78 MILES PER HOUR
  - RECOMMENDED BATCH CAPACITY FOR DRYING  
GRAIN - 3' DEPTH - 640 BU. PER BIN  
BALED HAY - 5 BALES DEEP - 135 BALES PER BIN  
PEANUTS - 6' DEPTH - 11 T. PER BIN (VA. TYPE)  
12.5 T. PER BIN (RUNNERS)
  - AT GRAIN DEPTHS BELOW 3' THE EDGES OF THE GRAIN PILE SHOULD HAVE SHALLOWER DEPTH FOR UNIFORMITY OF DRYING AT THE EDGES. PACK BALED HAY TIGHTLY. PUT CUT SIDE OF BALE DOWN.
  - MINIMUM RECOMMENDED FAN - 7.5 H.P. (FOR 3 BINS)  
HEAT REQUIREMENT - ADJUSTABLE BETWEEN 250,000 AND 1,200,000 B.T.U. PER HOUR.
  - STORAGE CAPACITY  
GRAIN - 6' DEPTH - 1280 BU. PER BIN  
BALED HAY TO ROOF - 16 T. PER BIN  
PEANUTS (MIXING BETWEEN BINS) 24 T. PER BIN
  - AIR TUNNEL DESIGNED FOR 32,000 C.F.M. THIS DELIVERY WOULD SERVE 6 BINS MAXIMUM TO CARE FOR FUTURE EXPANSION.
  - IF DESIRED A MAN DOOR MAY BE INSTALLED OVER THE AIR TUNNEL DOOR TO PERMIT INSPECTION FROM THE TOP OF THE AIR TUNNEL.
  - PIER FOOTINGS MUST BE DEEP ENOUGH TO BEAR ON SOLID GROUND.
  - EQUIP BUILDING WITH AN ADEQUATE LIGHTNING PROTECTION SYSTEM IN AREAS WHERE NEEDED.



- ELECTRICAL SYMBOLS**
- Svs - VAPOR SEALED SINGLE SWITCH
  - S3vs - VAPOR SEALED 3WAY SWITCH
  - vs - VAPOR SEALED LAMP HOLDER
  - fl - PAR 38 FLOODS
  - ⊕GR - CONVENIENCE OUTLET GROUNDED
  - ⊕ - OUTLETS FROM 3 CIRCUITS:
  - 110V. CONVENIENCE GROUNDED
  - 220V. TWIST LOCK FOR 3/4 HP
  - 220V. TWIST LOCK FOR 3 HP
  - \* - CONSIDER EXPANSION REQUIREMENTS MAY NEED 200A.

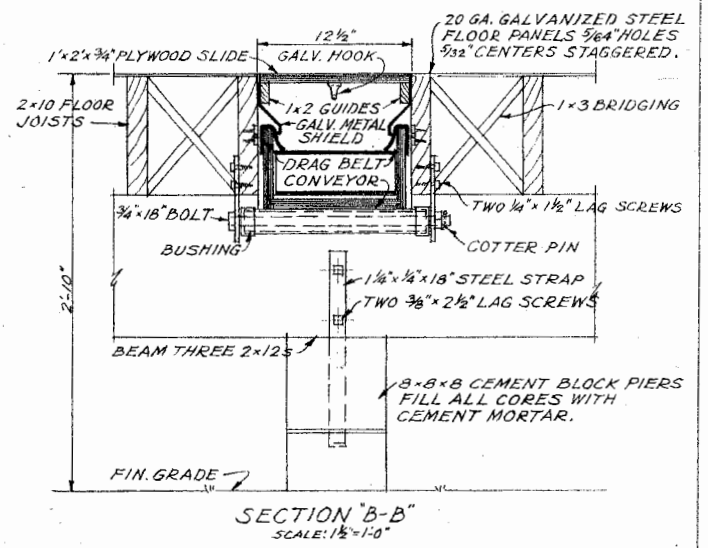
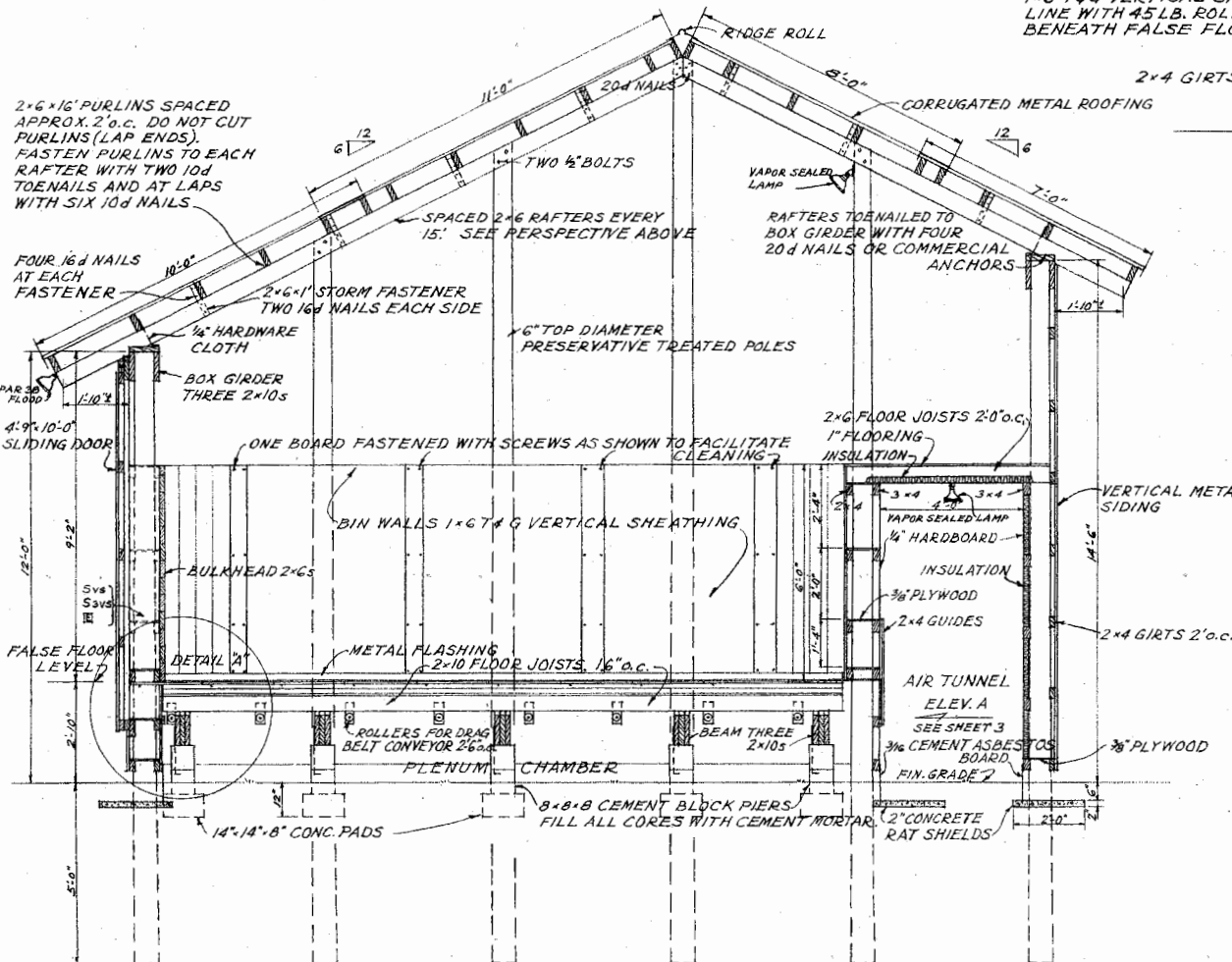
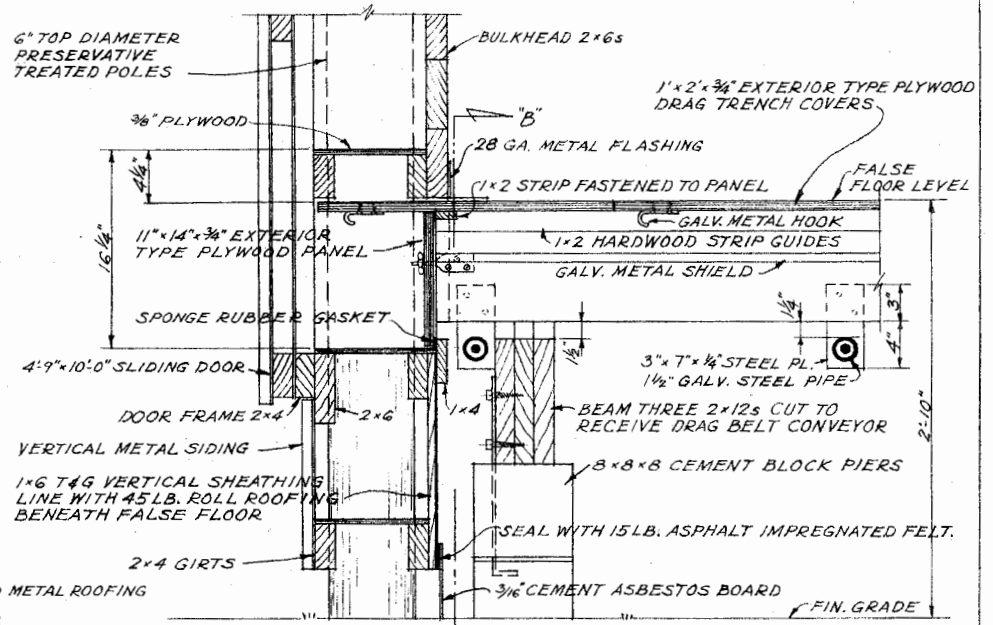
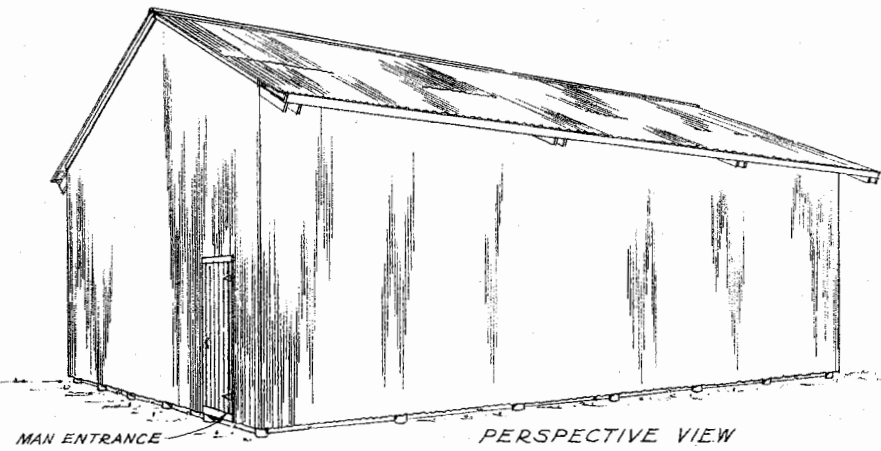
**LSU**  
**AgCenter**  
Research & Extension

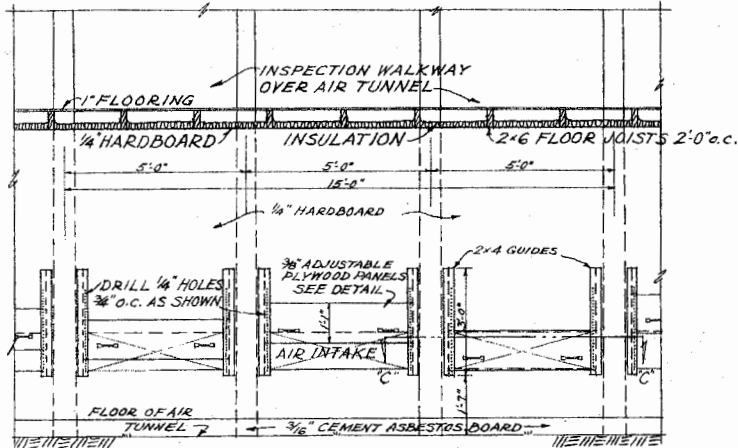
**DRYING AND STORAGE SHED**

|          |          |              |
|----------|----------|--------------|
| USDA '59 | EX. 5869 | SHEET 1 OF 3 |
|----------|----------|--------------|

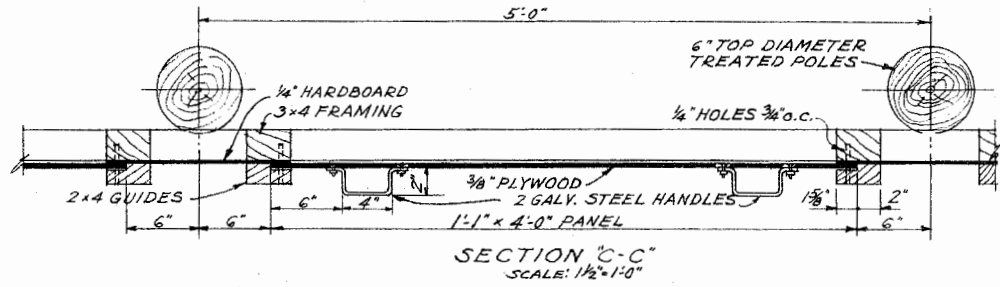
20-H

SCALE: 1/8"=1'-0" UNLESS OTHERWISE NOTED.

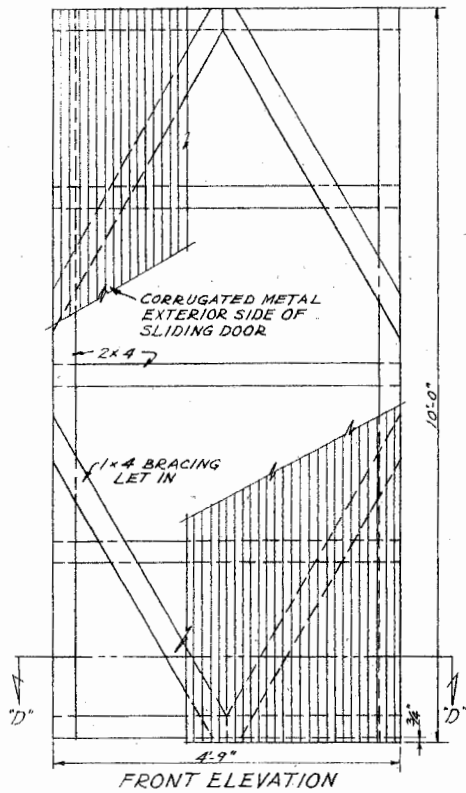




PART ELEVATION 'A'  
SCALE: 3/8" = 1'-0"

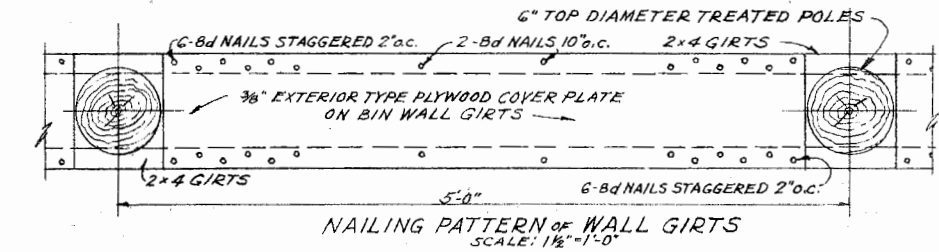


SECTION 'C-C'  
SCALE: 1/2" = 1'-0"



FRONT ELEVATION

END ELEV.



NAILING PATTERN OF WALL GIRTS  
SCALE: 1/2" = 1'-0"

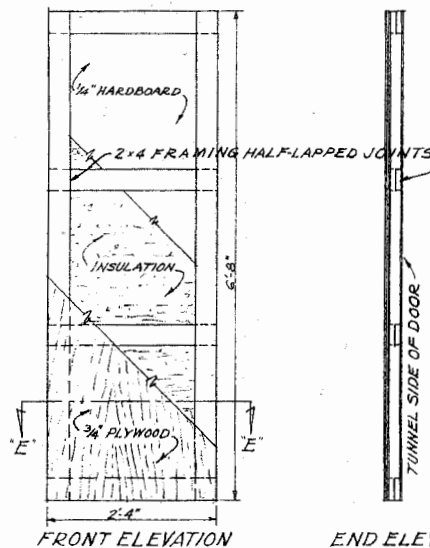
OPERATIONAL NOTES:

1. DRAG CONVEYOR 20' LONG TO BE MOVED FROM BIN TO BIN.  
FOR SMALL GRAINS, WIPERS TO KEEP GRAIN FROM GETTING UNDER EDGE OF BELT ARE ESSENTIAL. 6" BELTS HANDLE ABOUT 1000 BU. PER HOUR.
2. SLIDE DOORS IN TUNNEL MAY BE USED AS THROTTLE VALVES TO CONTROL FLOW TO BINS.  
FOR UNEQUAL DEPTHS IN BINS:

| BIN 1 |           | BIN 2    |           |
|-------|-----------|----------|-----------|
| DEPTH | GATE OPEN | DEPTH    | GATE OPEN |
| FULL  | 12"       | 1/4 FULL | 9"        |
| FULL  | 12"       | 3/4 FULL | 6 3/4"    |
| FULL  | 12"       | 5/8 FULL | 4 3/4"    |
| FULL  | 12"       | 1/2 FULL | 3 3/4"    |
| FULL  | 12"       | 3/8 FULL | 3 1/4"    |
| FULL  | 12"       | 1/4 FULL | 3"        |

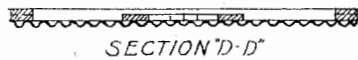
WHEN ONE BIN IS DRIER THAN ANOTHER, THROTTLE AIR TO REDUCE DELIVERY TO DRY BIN. LOW AIR FLOWS ARE MORE ECONOMICAL WHEN PRODUCT IS NEARLY DRY.

3. WHEN REMOVING DRAG TRENCH COVERS, PULL THEM SLOWLY TO AVOID JAMMING AND OVERFLOWING DRAG BELT.
4. CAUTION: BE SURE NO ONE IS IN TUNNEL AND BOTH MAN DOORS ARE SECURE BEFORE STARTING FAN AND BURNER.



FRONT ELEVATION

END ELEV.



SECTION 'D-D'

DETAILS OF BIN DOOR SCALE: 3/16" = 1'-0"



SECTION 'E-E'

DETAILS OF TUNNEL DOOR SCALE: 3/16" = 1'-0"



DRYING AND STORAGE SHED

USDA '59 EX. 5869 SHEET 3 OF 3

## Disclaimer

This site makes available conceptual plans that can be helpful in developing building layouts and selecting equipment for various agricultural applications. These plans do not necessarily represent the most current technology or construction codes. They are not construction plans and do not replace the need for competent design assistance in developing safe, legal and well-functioning agricultural building system. The LSU Agriculture Center, the Mid-West Plan Service, the United States Department of Agriculture and none of the cooperating land-grant universities warranty these plans.