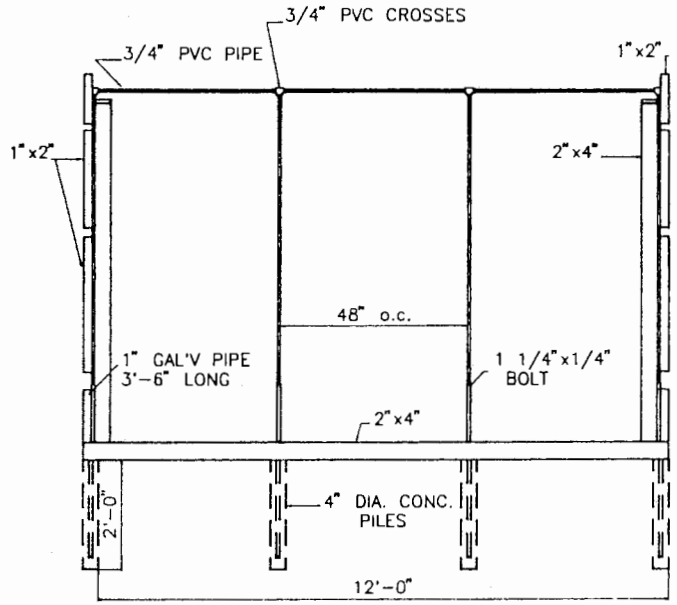
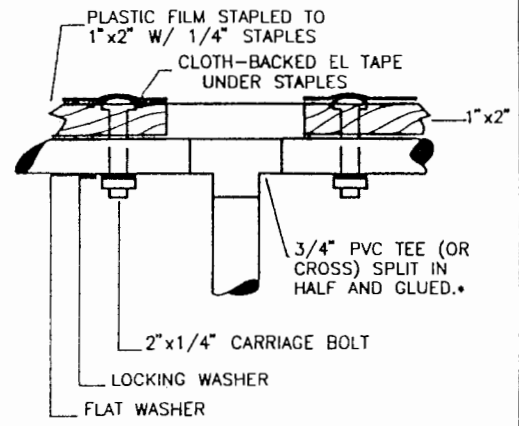


ENDS SCALE: 1/2" = 1'-0"



SIDES SCALE: 1/2" = 1'-0"

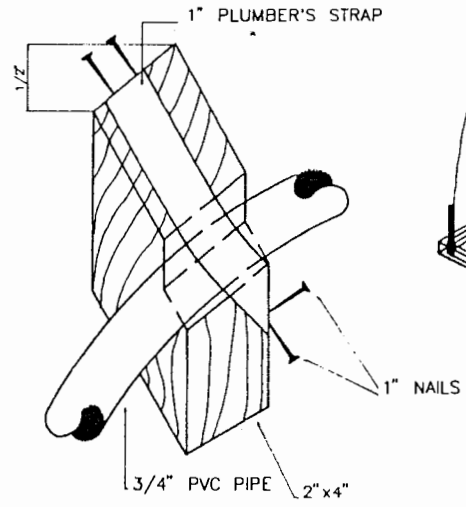


DETAIL NO. 1 N.S.

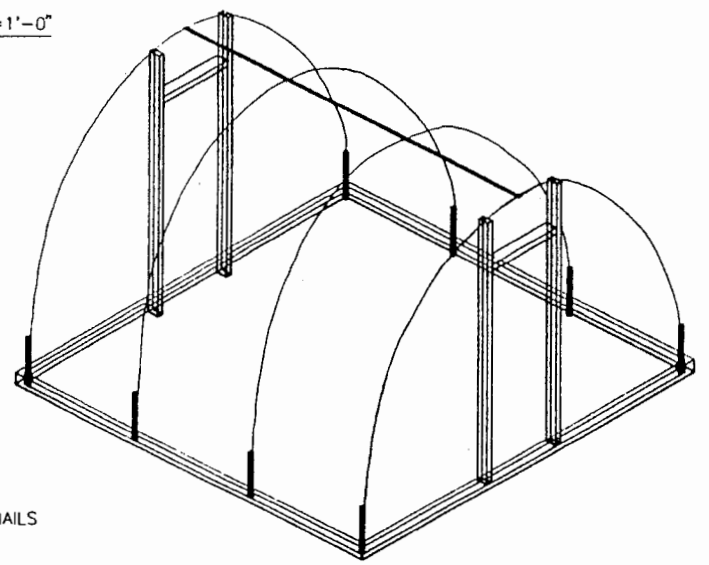
NOTE: TOP PLASTIC COVER SHOULD OVERLAP ENDS COVER AT STAPLING STRIPS (1" x 2")

- ### MATERIALS LIST
- 5 PCS. 3/4" PVC PIPE 20' LONG
 - 2 PCS. 1" GALVANIZED PIPE 15' LONG
 - 4 PCS. 2"x4"x12' PRESSURE TREATED LUMBER
 - 2 PCS. 2"x4"x8' PRESSURE TREATED LUMBER
 - 4 PCS. 2"x4"x10' PRESSURE TREATED LUMBER
 - 4 PCS. 1"x2"x10' PRESSURE TREATED LUMBER
 - 42 2"x1/4" CARRIAGE BOLTS W/ LOCKING & FLAT WASHERS
 - 2 3/4" PVC CROSSES
 - 2 3/4" PVC TEES
 - 12" PLUMBER'S STRAP
 - 1 BOX 1/4" STAPLES
 - 100' CLOTH-BACKED ELECTRICIANS TAPE (OR PLASTIC BATTING)
 - 1 ROLL POLYETHYLENE PLASTIC FILM 4 MIL. THICK 12' WIDE, 40' LONG
 - 1 ST'D 30"x78" SCREEN DOOR & HARDWARE

*NOTE: IF PVC CROSSES AND TEES ARE NOT AVAILABLE, METAL SPLIT CROSSES AND TEES (FOR EL. CONDUIT) ARE RECOMMENDED.



DETAIL NO. 2 N.S.



GENERAL VIEW OF FRAMING



PLASTIC PIPE GREENHOUSE	
ENGINEER J.W.B.	SCALE as shown
DRAWN BY R.A.	SHEET 1 OF 1
TRACED BY F. EMBAUGH	DATE ORG. 8/81 REDO. 3/82

Disclaimer

This site makes available conceptual plans that can be helpful in developing building layouts and selecting equipment for various agricultural applications. These plans do not necessarily represent the most current technology or construction codes. They are not construction plans and do not replace the need for competent design assistance in developing safe, legal and well-functioning agricultural building system. The LSU Agriculture Center, the Mid-West Plan Service, the United States Department of Agriculture and none of the cooperating land-grant universities warranty these plans.