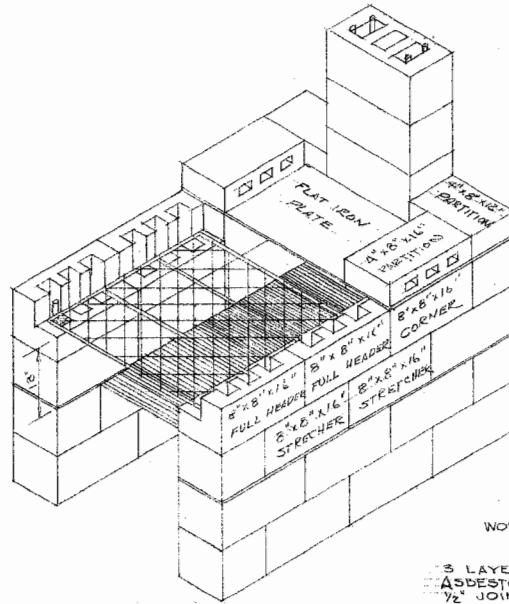
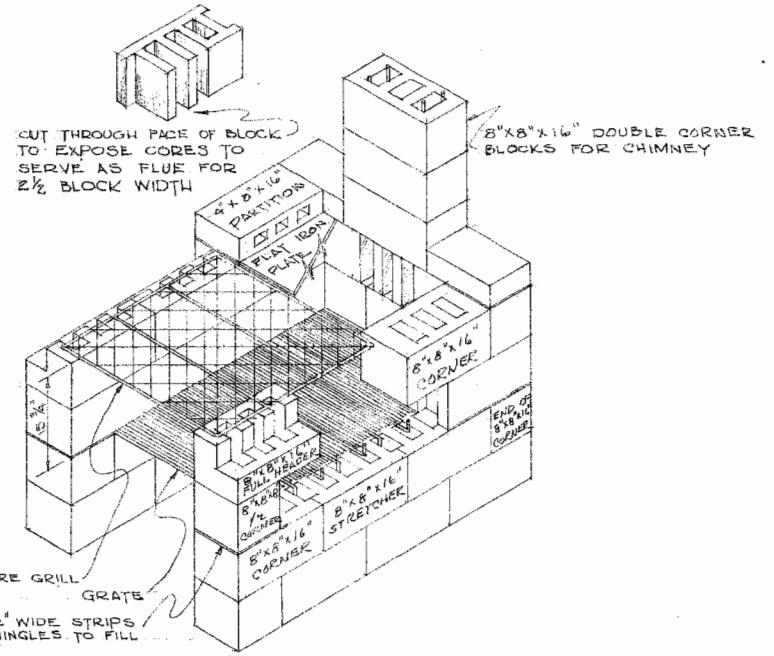


ISOMETRIC VIEW
2 1/2 BLOCKS WIDE - 3 1/2 BLOCKS LONG
8" COOKING HEIGHT



ISOMETRIC VIEW
2 1/2 BLOCKS WIDE - 3 1/2 BLOCKS LONG
13" COOKING HEIGHT



ISOMETRIC VIEW
2 1/2 BLOCKS WIDE - 3 1/2 BLOCKS LONG
15 3/4" COOKING HEIGHT

MATERIALS	2 1/2 BLKS. WIDE 3 1/2 BLKS. LONG	2 BLKS. WIDE 3 BLKS. LONG	3 BLKS. WIDE 4 BLKS. LONG
8" x 8" x 16" UNITS FULL HEADER	4	2	4
8" x 8" x 8" UNITS FULL HEADER	0	2	2
8" x 8" x 16" UNITS STRETCHER	14	8	17
8" x 8" x 16" UNITS CORNER	10	12	12
8" x 8" x 8" UNITS HALF CORNER	4	2	2
8" x 8" x 16" UNITS DOUBLE CORNER	7	7	7
4" x 8" x 16" UNITS PARTITION	2	2	4
4" x 8" x 16" UNITS 1/2 PARTITION	0	2	0
4" x 8" x 12" UNITS PARTITION	2	0	0

MATERIALS (OTHER)	2 1/2 BLKS. WIDE 3 1/2 BLKS. LONG	2 BLKS. WIDE 3 BLKS. LONG	3 BLKS. WIDE 4 BLKS. LONG
3/8" FLAT IRON PLATE	28 1/2" x 15"	31" x 15"	46" x 15"
WOVEN WIRE MESH GRILL ON 3/8" FRAME	30" x 30"	24" x 24"	38" x 38"
3/4" STEEL PIPE FOR WALL BRACE (METHOD #1)	2pc 4'-0" 4pc 6'-6"	2pc 4'-0" 4pc 6'-6"	2pc 4'-0" 4pc 6'-6"
3/4" STEEL PIPE FOR WALL BRACE (METHOD #2)	12pc 4'-0" 4pc 6'-6"	10pc 4'-0" 4pc 6'-6"	14pc 4'-0" 4pc 6'-0"
1/2" STEEL REINFORCING BARS FOR GRATE (METHOD #1 STRAIGHT BARS)	34pc 2'-5" 68pc 1 1/2"	26pc 2'-3" 50pc 1 1/2"	42pc 2'-3" 82pc 1 1/2"
ASBESTOS SHINGLES OR SIDING FOR FILLING JOINT AT GRATE LEVEL	6pc 7 1/2" x 1 1/2" 6pc 7 1/2" x 1 1/2" 6pc 2 1/4" x 1 1/2" 6pc 2 1/4" x 1 1/2" 6pc 1 5/8" x 1 1/2" 6pc 1 5/8" x 1 1/2" 4pc 7 1/4" x 1 1/2"	6pc 7 1/4" x 1 1/2" 6pc 2 1/4" x 1 1/2" 6pc 2 1/4" x 1 1/2" 3pc 3 1/4" x 1 1/2" 3pc 1 5/8" x 1 1/2" 4pc 7 1/2" x 1 1/2"	6pc 7 1/2" x 1 1/2" 15pc 2 1/4" x 1 1/2" 6pc 1 3/4" x 1 1/2" 3pc 3 1/4" x 1 1/2" 6pc 2 3/8" x 1 1/2" 6pc 1 5/8" x 1 1/2" 4pc 7 1/4" x 1 1/2"

LSU
AgCenter
Research & Extension

MOVABLE BARBECUE GRILL
OF CONCRETE BLOCK

ENGINEER MISS. STATE. COL.	SCALE 3/4" = 1'-0"
DRAWN BY J. K. BAGLEY	SHEET 1 OF 1
TRACED BY J. K. B.	JUNE, 1954 NO. 70-10

Disclaimer

This site makes available conceptual plans that can be helpful in developing building layouts and selecting equipment for various agricultural applications. These plans do not necessarily represent the most current technology or construction codes. They are not construction plans and do not replace the need for competent design assistance in developing safe, legal and well-functioning agricultural building system. The LSU Agriculture Center, the Mid-West Plan Service, the United States Department of Agriculture and none of the cooperating land-grant universities warranty these plans.