

Highlights of Louisiana

# Agriculture

2023



Forestry, crops, animals, fisheries  
and more add up to multibillion  
dollar industries for state.

Agriculture is big business in Louisiana, contributing billions of dollars to the economy, employing thousands of people and providing many of the products we use every day. From sugarcane and sweet potatoes to crawfish and catfish, with cattle, rice, cotton, soybeans, corn and much more in between, Louisiana agriculture provides a diverse range of commodities. It also provides jobs for thousands of farmers, fishers, foresters, ranchers and other agricultural producers, as well as thousands more involved in industries that handle food and fiber producers along their way to consumers.

In total, Louisiana agricultural products contributed \$7.3 billion to the state's economy as they left the farm gate in 2023. But their contributions didn't stop there. Couple that "gross farm value" with the "value added" as those producers made their way to consumers, and Louisiana agriculture had a total economic value of over \$12.8 billion in 2023. That's why we say agriculture is big business for Louisiana, and that's why the LSU AgCenter is proud to conduct research and extension activities to support diverse food and fiber industries that are Louisiana agriculture.

## Louisiana's Top 10 Commodities

Commodity	Total Value
Forestry	\$3.51 billion
Sugarcane	\$1.58 billion
Poultry	\$1.56 billion
Feed grain crops	\$881.46 million
Rice	\$769.91 million
Aquaculture	\$704.51 million
Marine fisheries	\$643.26 million
Soybeans	\$642.56 million
Cattle and calves	\$640.07 million
Horses	\$513.66 million

# About Louisiana agriculture:

## Farms and farmers

<b>Louisiana land in farms</b>	7,986,381 acres
<b>Land in forests</b>	14,938,298 acres
<b>Total land in state</b>	22,924,679 acres
<b>Average size of a farm</b>	319 acres
<b>Average landholding by timber owner</b>	101 acres

### About Louisiana farms

Number of farms	25,006
With less than \$5,000 in sales	51.8%
With \$5,000 to \$99,999 in sales	34.9%
With \$100,000 to \$499,999 in sales	5.8%
With \$500,000 or more in sales	7.5%
Family farms	84.5%
Partnerships	7.4%
Corporations	7.7%
Other	1.0%

### About Louisiana farmers

#### Age

Under 34 years	8.4%	Average Age	58
35 to 54 years	28.7%		
55 to and over	63.9%		

#### Primary occupation:

Farming	39.3%
Other	60.7%

#### Race

African American	6.7%
Caucasian	91.6%
Other	1.7%

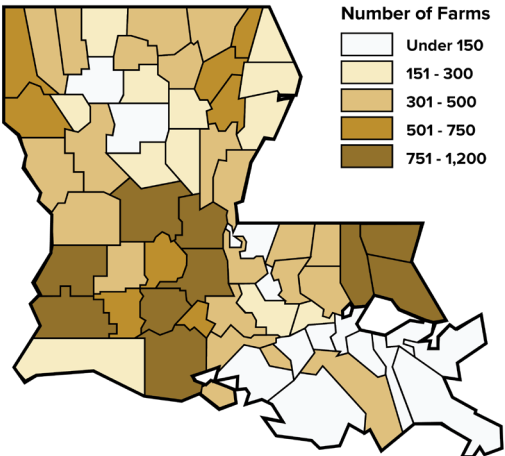
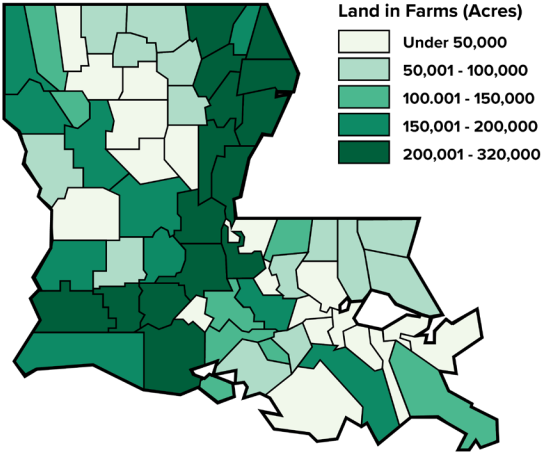
#### Sex

Male	64.4%
Female	35.6%

**Average value of agricultural  
production per farm**

**\$170,130**





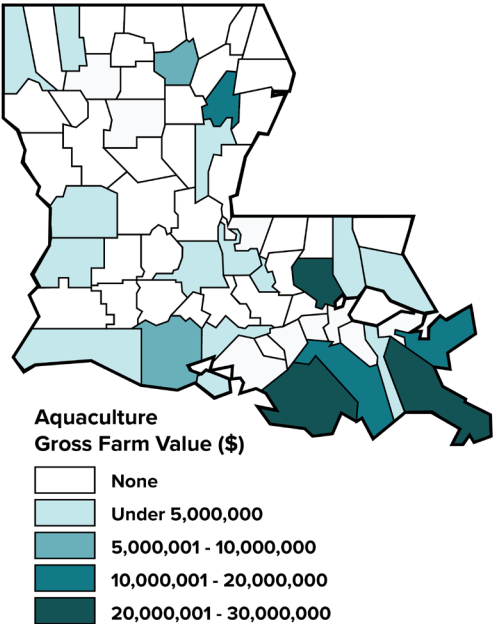
# Louisiana Aquaculture (without crawfish)



- 701 operations across 22 parishes
- 10.16 million pounds of catfish produced
- 1.12 million sacks of oysters produced
- 314,544 alligators marketed
- 428,000 turtles marketed
- 783,925 pounds of other aquaculture production

*The aquaculture industries in Louisiana other than crawfish include catfish, alligators, oysters, soft-shell crabs, turtles, minnows and other bait fish.*

**Total value of Louisiana aquaculture production (without crawfish) in 2023: \$274.2 million**

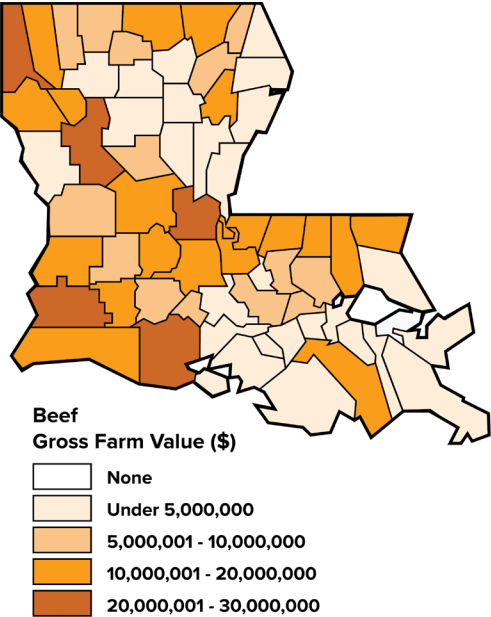


# Louisiana Beef



- **527,078 head in cow herd inventory**
- **530,557 head of cattle marketed**
- **10,950 farms and ranches**
- **Cattle production in 63 parishes**

**Total value of Louisiana beef  
production in 2023: \$640.1 million**

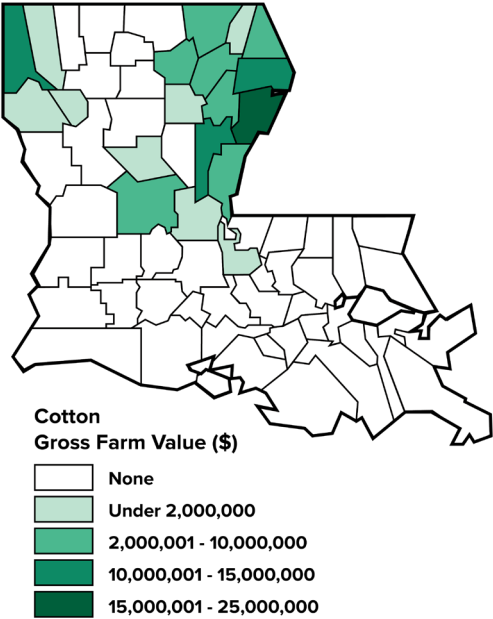


# Louisiana Cotton



- **99.5 million pounds (207,259 bales) produced**
- **113,686 acres harvested**
- **250 producers**
- **Production reported in 19 parishes**

# Total value of Louisiana cotton production in 2023: \$118.3 million



# Louisiana Crawfish (farm-raised)

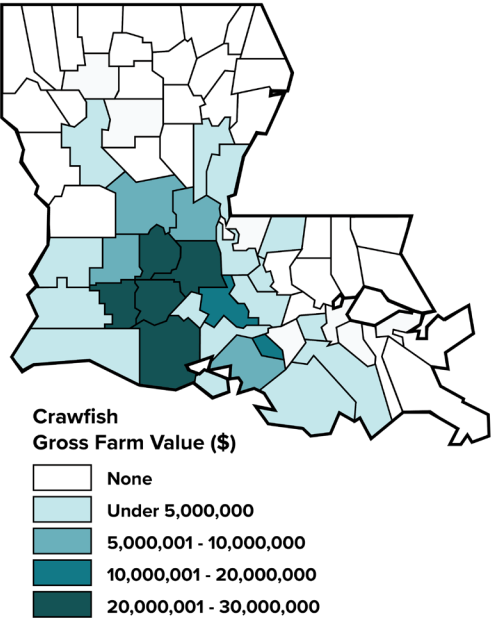


- **359,200 acres in crawfish production**
- **1,596 producers 151.8 million pounds produced**
- **199.1 million pounds marketed**
- **Production in 25 parishes**

*In addition to farm-raised crawfish, wild-caught crawfish added another 8.3 million pounds of production with a total value of \$26.8 million.*



**Total value of Louisiana  
farm-raised crawfish production  
in 2023: \$430.3 million**



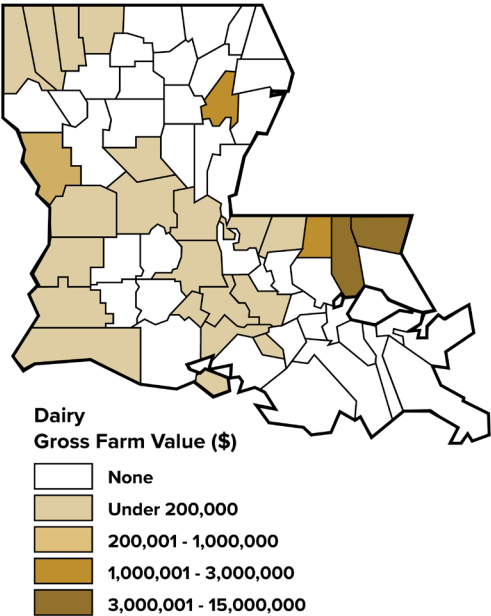
# Louisiana Dairy



- **101.9 million pounds of milk produced**
- **7,003 dairy cows ; 765 dairy goats**
- **61 Grade A dairy herds; 74 dairy goat operations**
- **Milk from dairy cattle reported in 8 parishes**
- **Milk from dairy goats reported in 18 parishes**

# Total value of Louisiana dairy production in 2023: \$67.7 million

*Dairy goats added another 687,247 pounds to total milk production with a total value of \$1.1 million.*



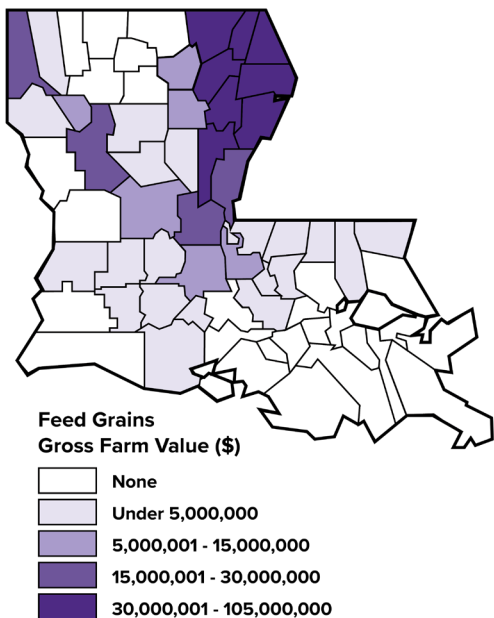
# Louisiana Feed Grains



- **120.6 million bushels produced**
- **685,872 acres harvested**
- **1,077 producers**
- **Production reported in 38 parishes**

*Feed grains include corn, grain sorghum and oats.*

## Total value of Louisiana feed grain production in 2023: \$881.5 million

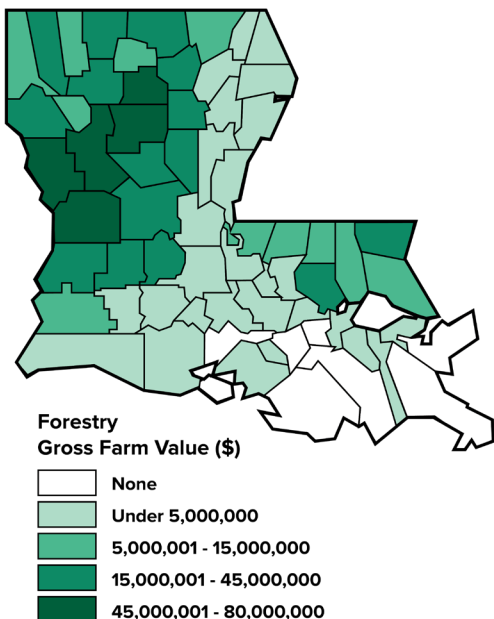


# Louisiana Forestry



- **14.9 million acres of forests in Louisiana**
- **148,000 forest landowners**
- **5.6 million cords of pulpwood and chip-n-saw produced**
- **1.2 billion board feet of saw timber produced**
- **Production reported in 57 parishes**

## Total value of Louisiana forestry production in 2023: \$3.5 billion



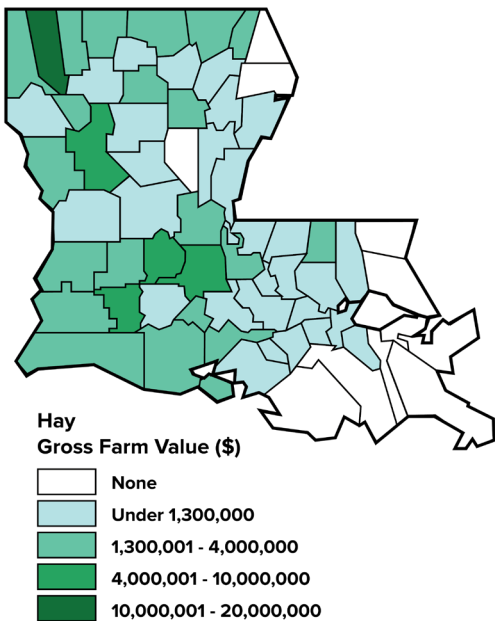
# Louisiana Hay



- **618,978 tons produced**
- **397,166 acres harvested**
- **3,670 producers**
- **Production reported in 54 parishes**



## Total value of Louisiana hay production in 2023: \$129.7 million

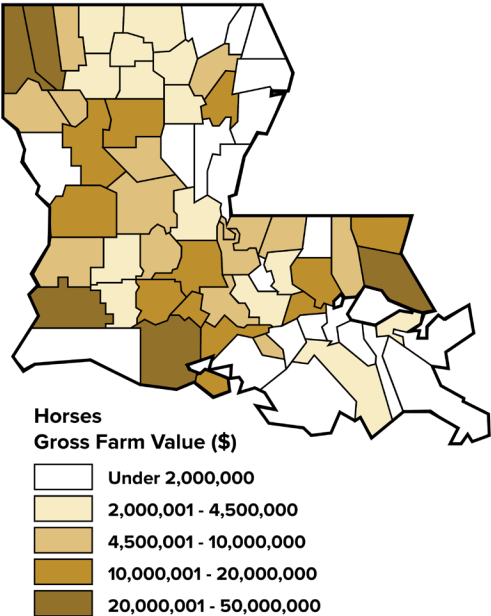


# Louisiana Horses



- **110,885 horses**
  - 15,157 racehorses
  - 22,832 show horses
  - 72,896 recreation horses
- **40,286 horse producers/owners**
- **Horse ownership reported in all 64 parishes**
- **More than \$200 million economic impact from horse racing industry**
- **More than \$100 million economic contribution from show horse industry**
- **Total economic effects are estimated at nearly \$2 billion**

# Total value of Louisiana horse industry in 2023: \$513.7 million



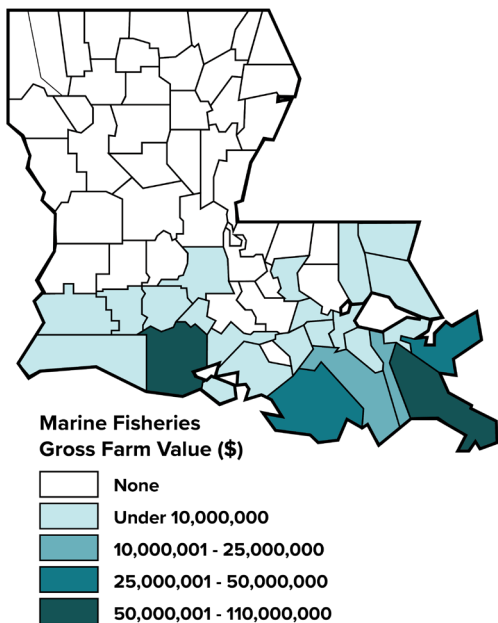
# Louisiana Marine Fisheries



- **895.8 million pounds total marine catch in Louisiana**
  - 80.7 million pounds shrimp
  - 51.2 million pounds crab
  - 763.9 million pounds commercial finfish (including menhaden)
- **Harvested by fishermen from 25 parishes**

*\*Marine fisheries information is one year after harvest season due to reporting requirements.*

## Total value of Louisiana marine fisheries in 2022\*: \$643.3 million

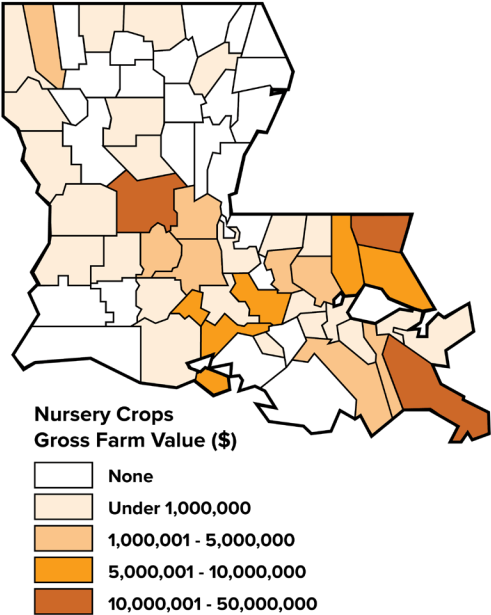


# Louisiana Nursery Crops



- **2,928 acres in nursery crop production**
- **1,056 nursery operations in Louisiana**
- **Production reported in 39 parishes**

# Total value of Louisiana nursery crop production in 2023: \$193.9 million



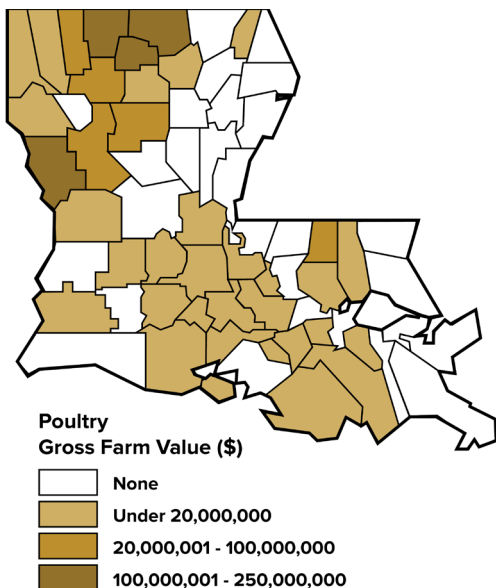
# Louisiana Poultry



- **977.9 million pounds of broiler meat produced**
- **719 broiler producers**
- **19.3 million dozens of edible eggs produced**
- **1,114 edible egg producers**
- **Production reported in 36 parishes**



## Total value of Louisiana poultry production in 2023: \$1.6 billion



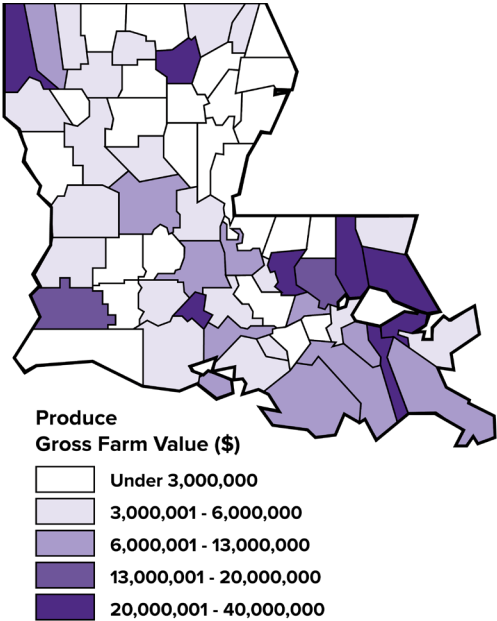
# Louisiana Produce



- 6,753 commercial producers
- 25,198 acres in commercial production
- 260,120 square feet of greenhouse in commercial production
- 615,698 home gardens
- Production reported in all 64 parishes

*Produce includes commercial vegetables, greenhouse vegetables, fruit crops, pecans and home gardens.*

**Total value of Louisiana produce in  
2023: \$743.2 million**

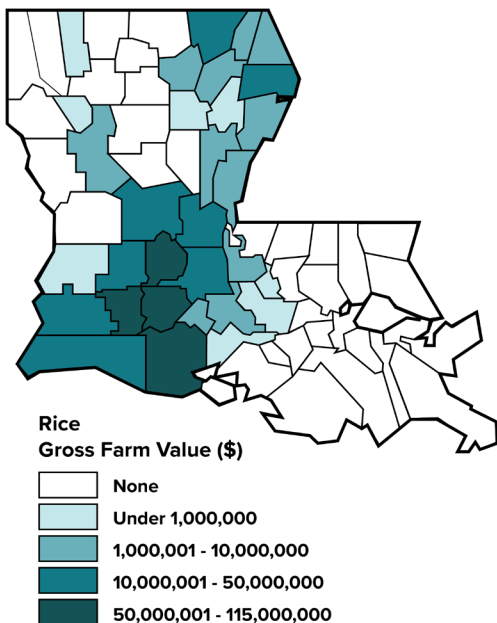


# Louisiana Rice



- **3.3 billion pounds of rice produced**
- **461,430 acres harvested**
- **592 producers**
- **Production reported in 31 parishes**

## Total value of Louisiana rice production in 2023: \$769.9 million

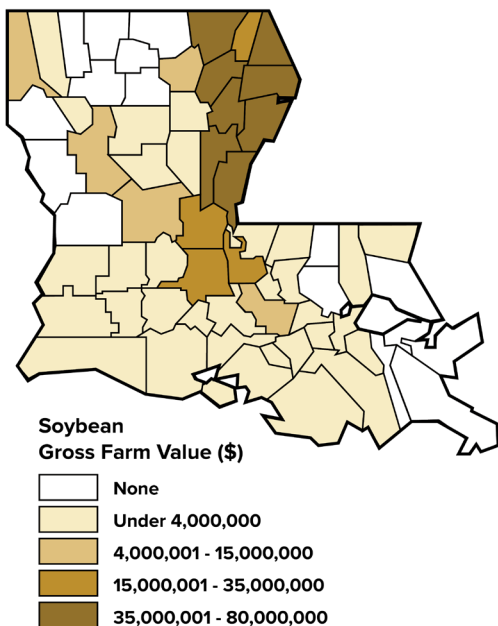


# Louisiana Soybeans



- **39.4 million bushels produced**
- **1,014,350 acres harvested**
- **1,501 producers**
- **Production reported in 48 parishes**

## Total value of Louisiana soybean production in 2023: \$642.6 million



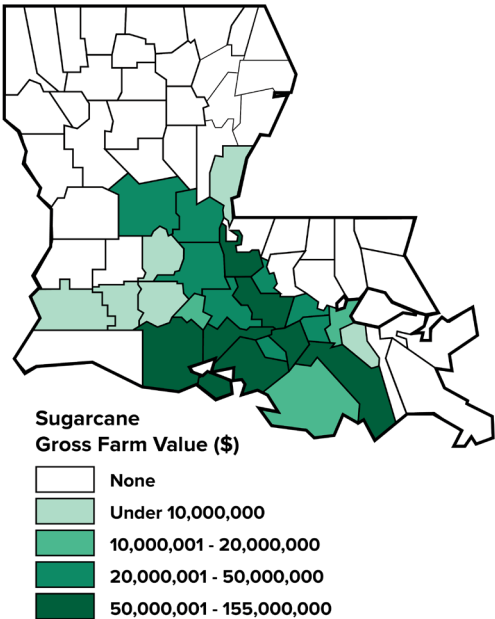
# Louisiana Sugarcane



- **1.8 million tons (3.7 billion pounds) of raw sugar produced**
- **90.6 million gallons of molasses produced**
- **532,913 acres harvested seed and sugar**
- **490,280 acres harvested for sugar**
- **425 producers**
- **Production reported in 23 parishes**



# Total value of Louisiana sugarcane production in 2023: \$1.6 billion

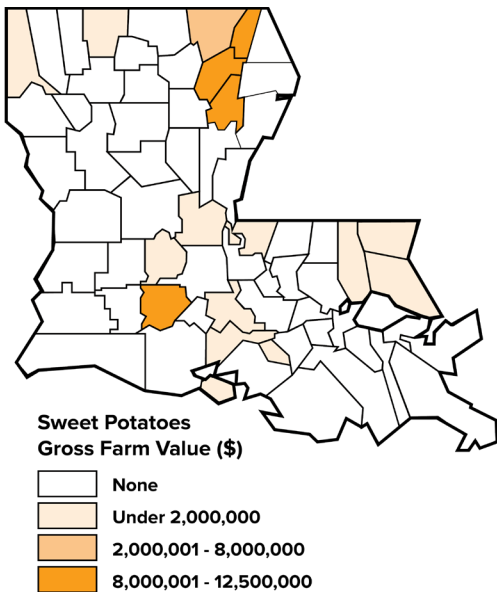


# Louisiana Sweet Potatoes



- **2.7 million bushels produced**
- **5,361 acres harvested**
- **33 producers**
- **Production reported in 15 parishes**

# Total value of Louisiana sweet potato production in 2023: \$82.8 million

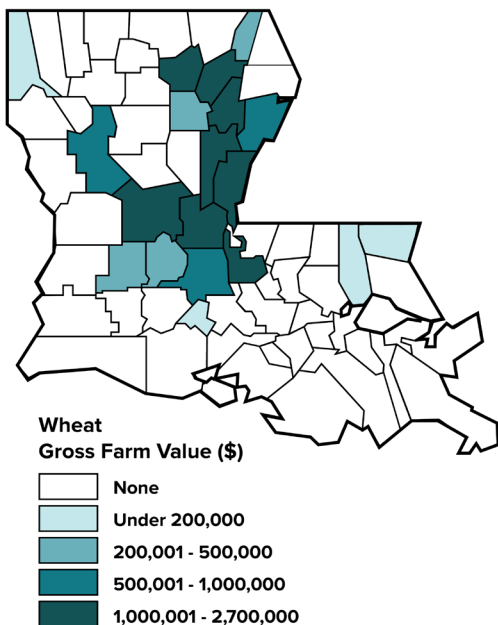


# Louisiana Wheat



- **2.4 million bushels produced**
- **42,323 acres harvested**
- **81 producers**
- **Production reported in 19 parishes**

## Total value of Louisiana wheat production in 2023: \$20.1 million



# 2023 Progress Report

## Animal Commodities

Commodity	Gross Farm Value	Value Added	Total Value
Cattle and Calves	\$568,948,522	\$71,118,565	\$640,067,087
Milk	\$26,352,197	\$42,427,038	\$68,779,235
Horses	\$462,753,500	\$50,902,885	\$513,656,385
Poultry	\$787,846,319	\$768,150,161	\$1,555,996,480
Rabbits	\$220,790	\$23,183	\$243,973
Quail/Pheasant	\$81,315	\$8,945	\$90,260
Sheep	\$1,301,976	\$149,727	\$1,451,703
Goats	\$3,346,946	\$418,368	\$3,765,314
Swine	\$1,581,290	\$197,661	\$1,778,951
Exotic Animals	\$811,400	\$85,197	\$896,597
<b>Total</b>	<b>\$1,853,244,256</b>	<b>\$933,481,730</b>	<b>\$2,786,725,986</b>

## Fisheries and Wildlife Commodities

Commodity	Gross Farm Value	Value Added	Total Value
Aquaculture	\$420,600,522	\$283,905,352	\$704,505,874
Freshwater Fisheries	\$20,330,411	\$17,789,110	\$38,119,521
Marine Fisheries	\$325,699,979	\$317,557,479	\$643,257,458
Fur Animals	\$85,649	\$21,412	\$107,061
Alligators (wild)	\$4,835,555	\$2,659,555	\$7,495,110
Hunting Lease Enterprise	\$108,425,953	\$9,216,206	\$117,642,159
Honey	\$6,275,682	\$1,568,921	\$7,844,603
<b>Total</b>	<b>\$886,253,751</b>	<b>\$632,718,035</b>	<b>\$1,518,971,786</b>

# Plant Commodities

Commodity	Gross Farm Value	Value Added	Total Value
Cotton	\$94,609,779	\$23,652,445	\$118,262,224
Feed Grain Crops	\$750,182,940	\$131,282,014	\$881,464,954
Forestry	\$878,705,111	\$2,636,115,334	\$3,514,820,445
Fruit Crops	\$32,949,813	\$11,532,434	\$44,482,247
Greenhouse Vegetables	\$3,960,853	\$1,386,299	\$5,347,152
Hay, Sold	\$110,359,871	\$19,312,977	\$129,672,848
Home Gardens	\$386,042,646	\$0	\$386,042,646
Nursery Stock and Ornamentals	\$125,116,540	\$68,814,097	\$193,930,637
Other Oilseed	\$0	\$0	\$0
Peanuts	\$2,255,962	\$338,394	\$2,594,356
Pecans	\$7,620,314	\$2,095,586	\$9,715,900
Rice	\$577,573,277	\$192,331,901	\$769,905,178
Sod Production	\$14,798,342	\$11,098,757	\$25,897,099
Soybeans	\$546,863,815	\$95,701,168	\$642,564,983
Sugarcane	\$931,235,438	\$646,277,394	\$1,577,512,832
Sweet Potatoes	\$47,306,509	\$35,479,882	\$82,786,391
Vegetables, Commercial	\$44,133,365	\$59,580,043	\$103,713,408
Perique Tobacco	\$49,500	\$37,125	\$86,625
Wheat	\$17,101,681	\$2,992,794	\$20,094,475
<b>Total</b>	<b>\$4,570,865,757</b>	<b>\$3,938,028,644</b>	<b>\$8,508,894,400</b>

<b>Total</b>			
<b>All Commodities</b>	<b>\$7,310,363,765</b>	<b>\$5,504,228,409</b>	<b>\$12,814,592,173</b>

## Links of interest:

**LSU AgCenter**  
[www.LSUAgCenter.com](http://www.LSUAgCenter.com)

**Louisiana Summary of Agriculture  
and Natural Resources**  
[www.LSUAgCenter.com/agsummary](http://www.LSUAgCenter.com/agsummary)

**Louisiana Department of Agriculture and Forestry**  
[www.ldaf.state.la.us](http://www.ldaf.state.la.us)

**Louisiana Department of Wildlife and Fisheries**  
[www.wlf.louisiana.gov](http://www.wlf.louisiana.gov)



Produced by LSU AgCenter Communications

The contents of this document are based on the 2023 Louisiana Summary of Agriculture and Natural Resources, LSU AgCenter publication No. 2382, and research by Kurt Guidry, Ph.D., Professor, and Raghav Goyal, Assistant Professor, Department of Agricultural Economics and Agribusiness, LSU AgCenter.

**Visit our website: [www.LSUAgCenter.com](http://www.LSUAgCenter.com)**

AC- 4      3,000      6/24 REV

The LSU AgCenter and LSU provide equal opportunities in programs and employment.