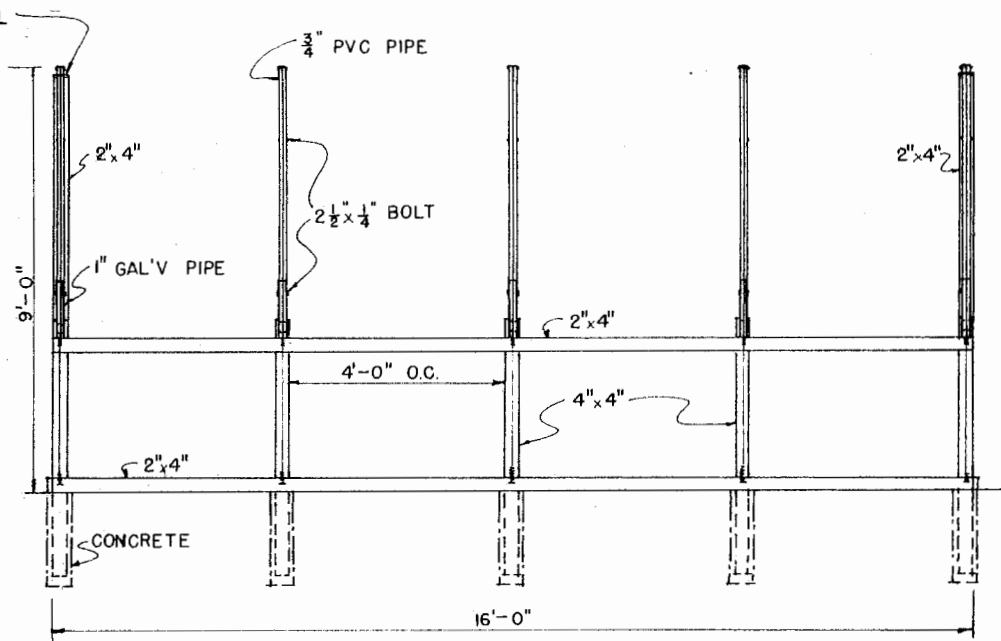
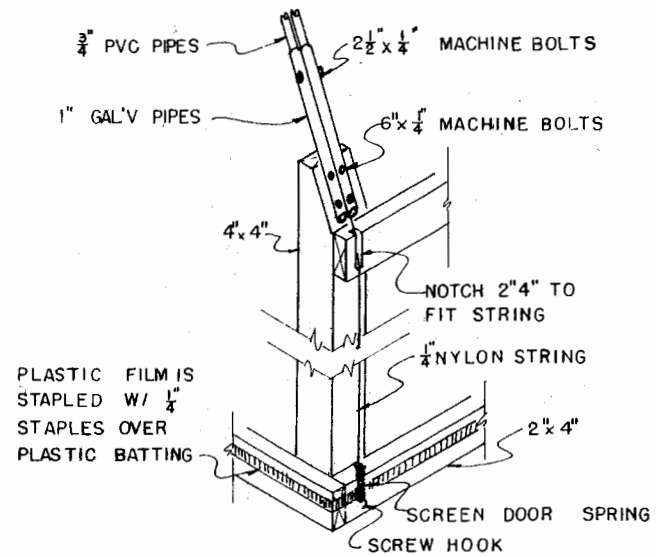


ENDS SCALE:  $\frac{1}{2}$ " = 1'-0"



SIDES SCALE:  $\frac{1}{2}$ " = 1'-0"

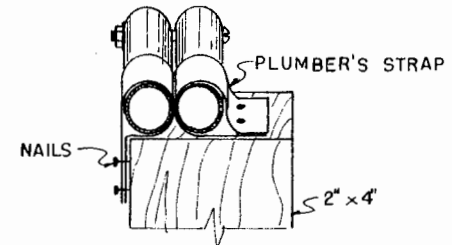
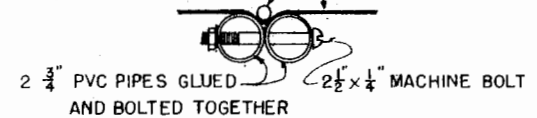


CORNER DETAIL N.S.

### MATERIALS

- 6 PCS. 2" x 4" x 16' PRESSURE TREATED LUMBER
- 5 PCS. 2" x 4" x 12' PRESSURE TREATED LUMBER
- 10 PCS. 4" x 4" x 11' PRESSURE TREATED LUMBER
- 10 PCS. 3/4" PVC PIPE, 20' LONG
- 30' 1" GALVANIZED PIPE
- 35 2 1/2 x 1/4" ROUND HEAD MACHINE BOLTS
- 40 6" x 1/4" ROUND HEAD MACHINE BOLTS
- 150' 1/4" NYLON STRING
- 70' PLASTIC BATTING
- 1 ROLL 4 MIL POLYETHYLENE PLASTIC FILM, 20' x 100'
- 1 BOX 1/4" STAPLES
- 5 SCREEN DOOR SPRINGS
- 10 SCREW HOOKS
- 1 ST'D 30" x 78" SCREEN DOOR & HARDWARE
- 100 2" NAILS

1/4" NYLON STRING PLASTIC FILM



ATTACHMENT DETAIL N.S.



### DOUBLE PLASTIC PIPE GREENHOUSE

ENGINEER <i>FEB</i>	SCALE AS SHOWN
DRAWN BY R.A.	SHEET 1 OF 1
TRACED BY	NO. 48-11

## Disclaimer

This site makes available conceptual plans that can be helpful in developing building layouts and selecting equipment for various agricultural applications. These plans do not necessarily represent the most current technology or construction codes. They are not construction plans and do not replace the need for competent design assistance in developing safe, legal and well-functioning agricultural building system. The LSU Agriculture Center, the Mid-West Plan Service, the United States Department of Agriculture and none of the cooperating land-grant universities warranty these plans.