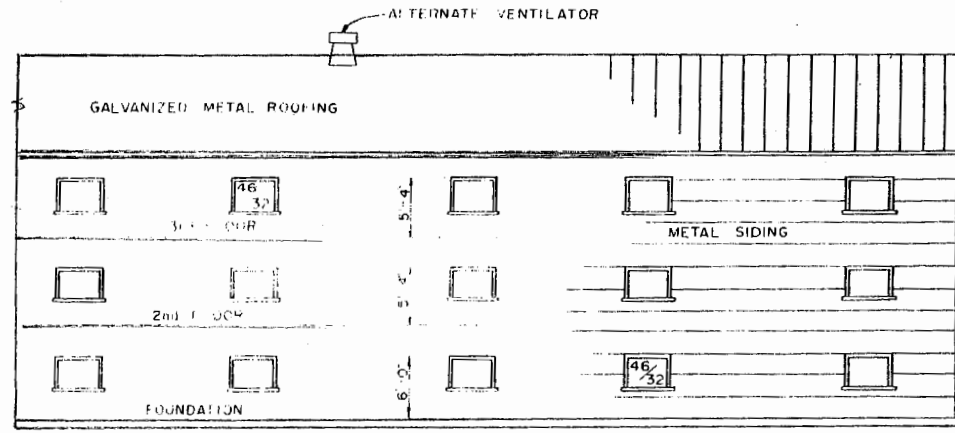
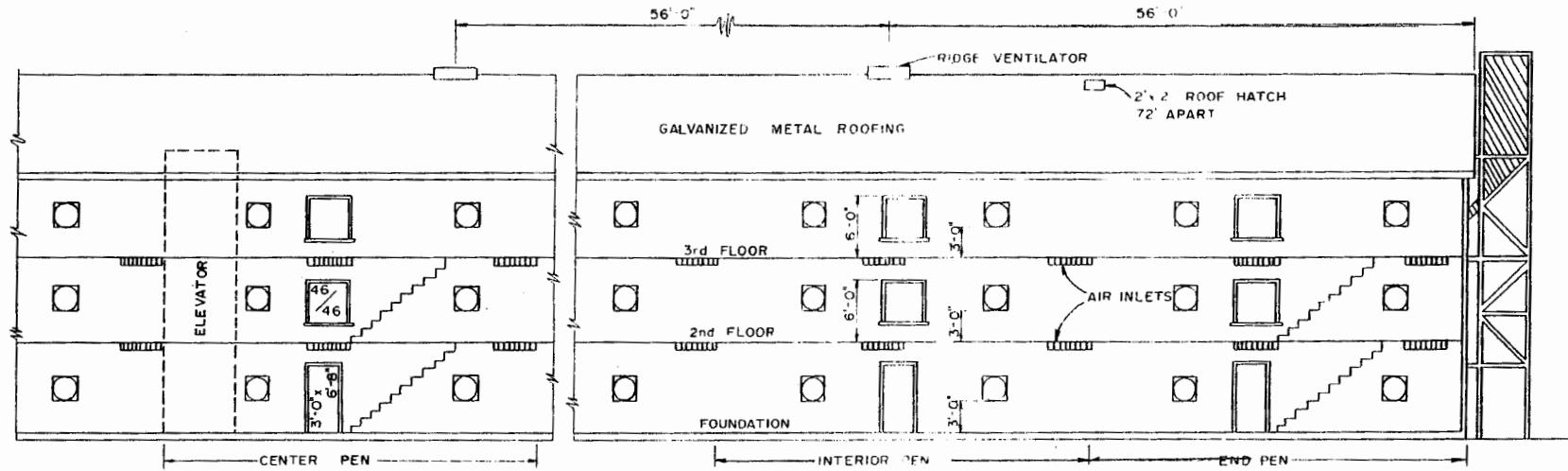


END ELEVATION



NORTH ELEVATION



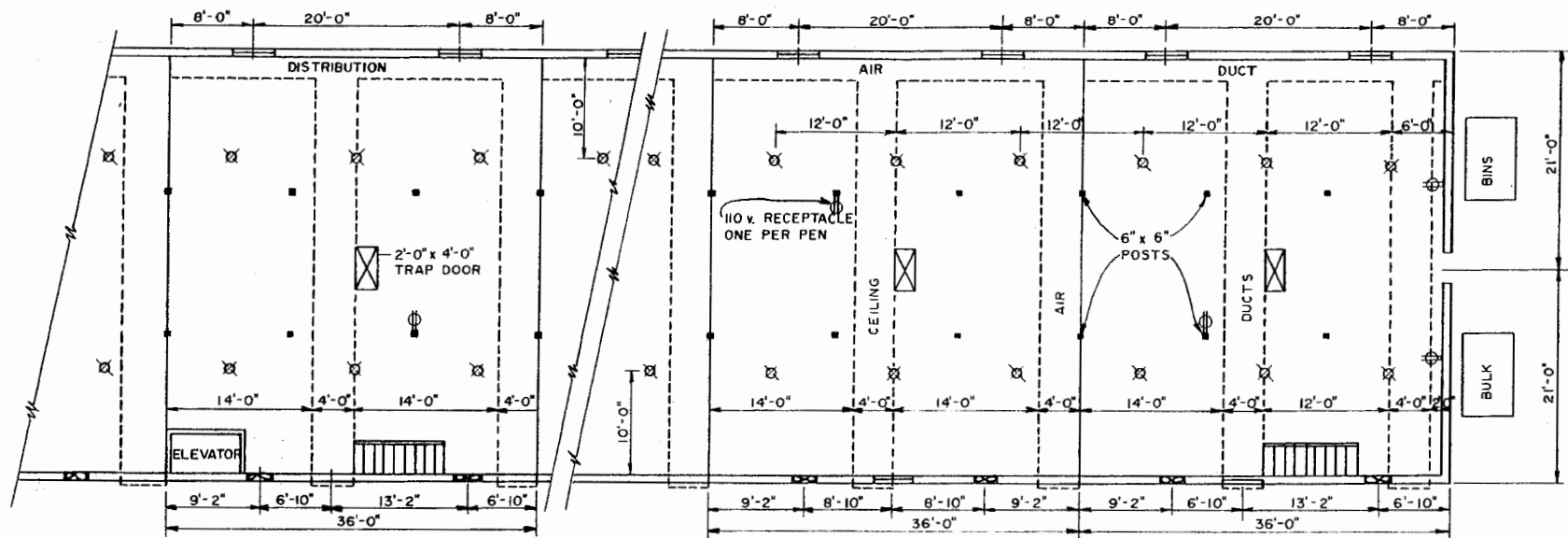
SOUTH ELEVATION

SCALE: $\frac{1}{8}'' = 1'-0''$

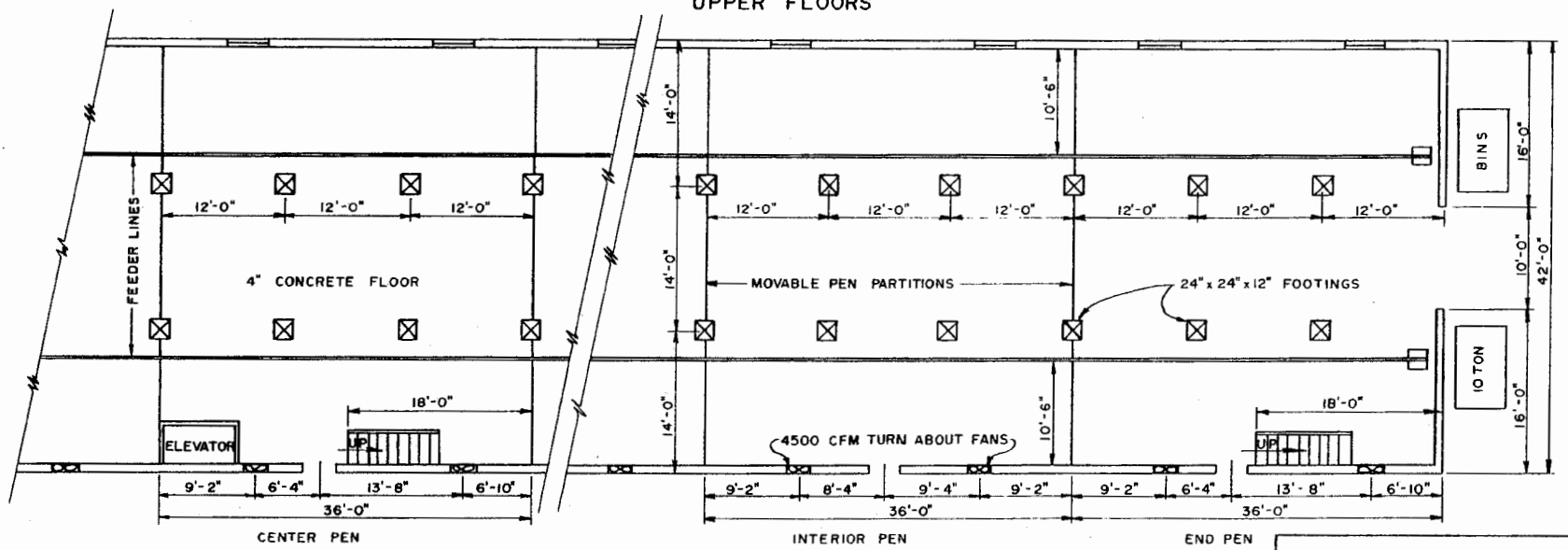


3 STORY BROILER HOUSE


DEL. '67 EX. 6036 SHEET 1 OF 5

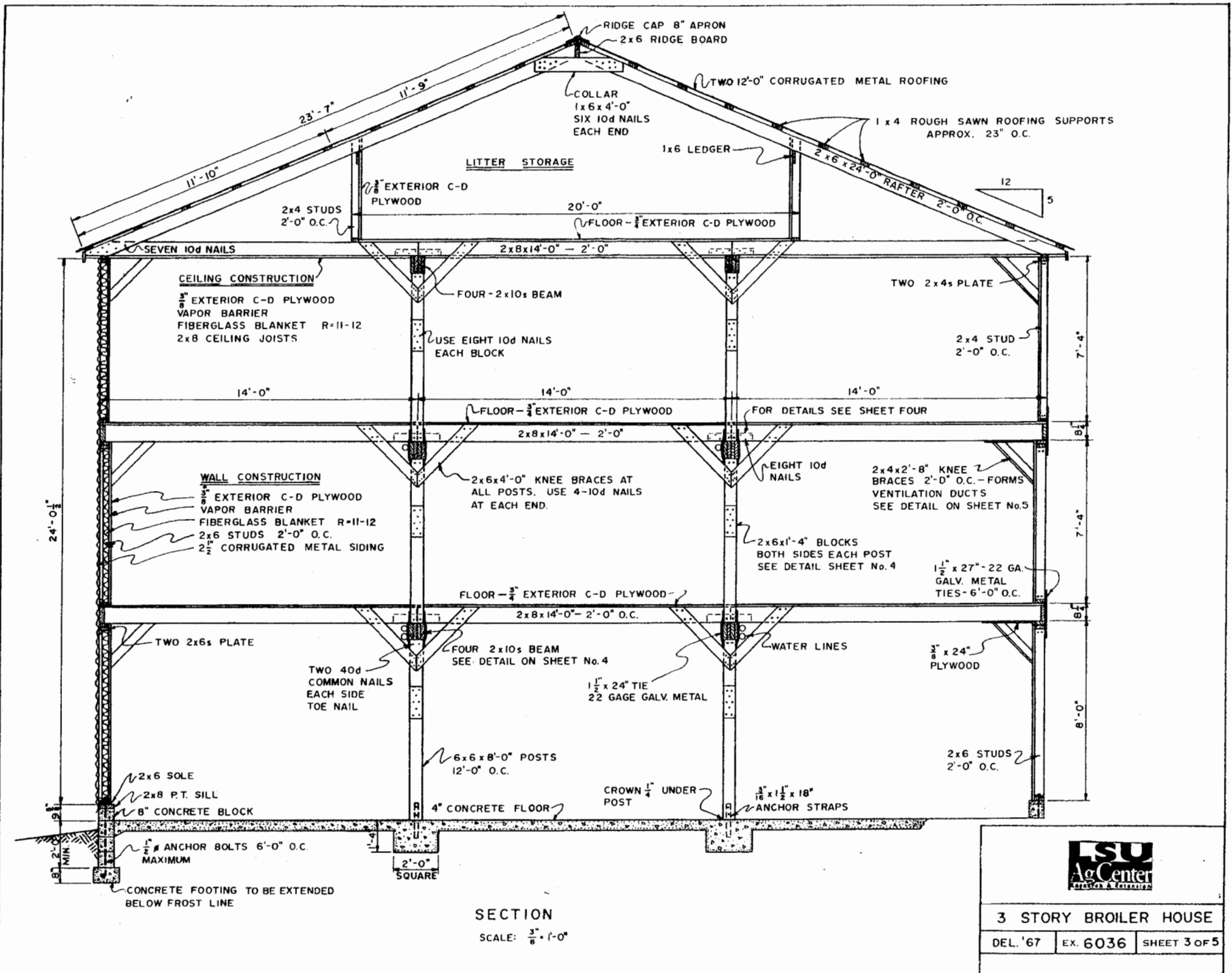


UPPER FLOORS

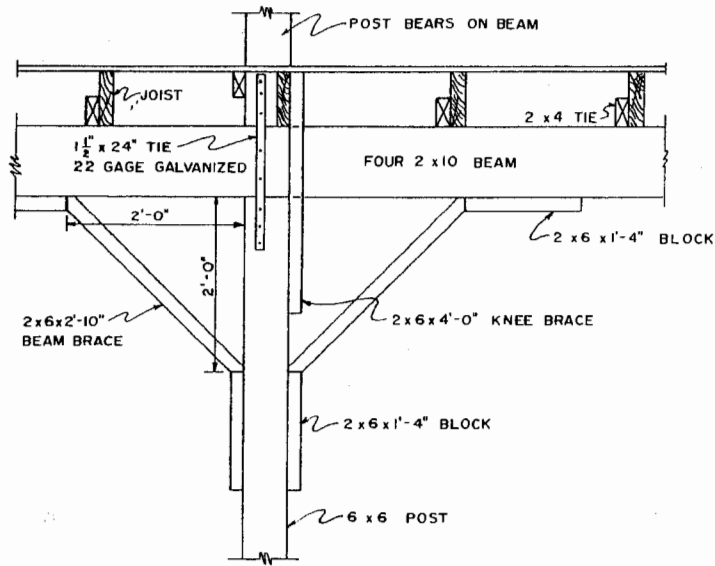


GROUND FLOOR PLAN
SCALE: $\frac{1}{8}'' = 1'-0''$

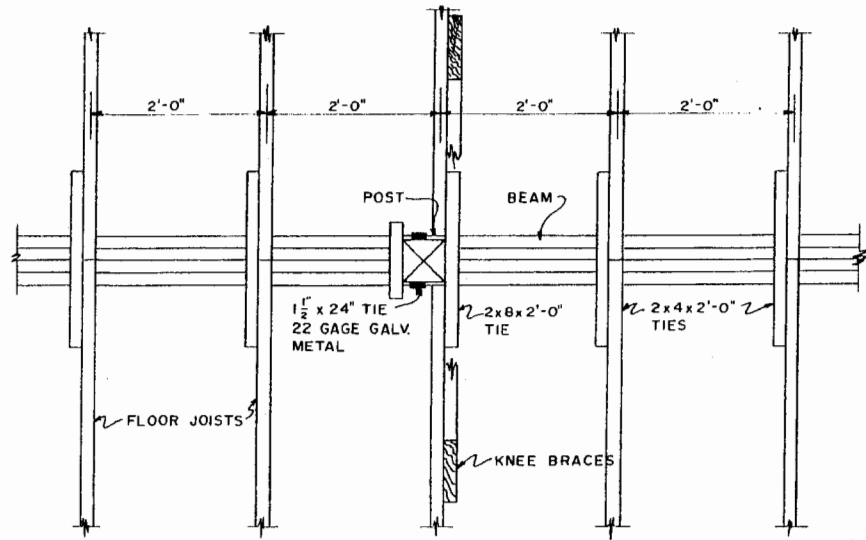
		
3 STORY BROILER HOUSE		
DEL. '67	EX 6036	SHEET 2 OF 5



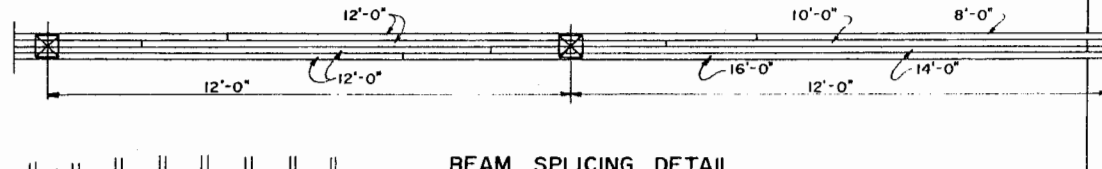
3 STORY BROILER HOUSE
 DEL. '67 EX. 6036 SHEET 3 OF 5



POST DETAIL
SCALE: 1" = 1'-0"

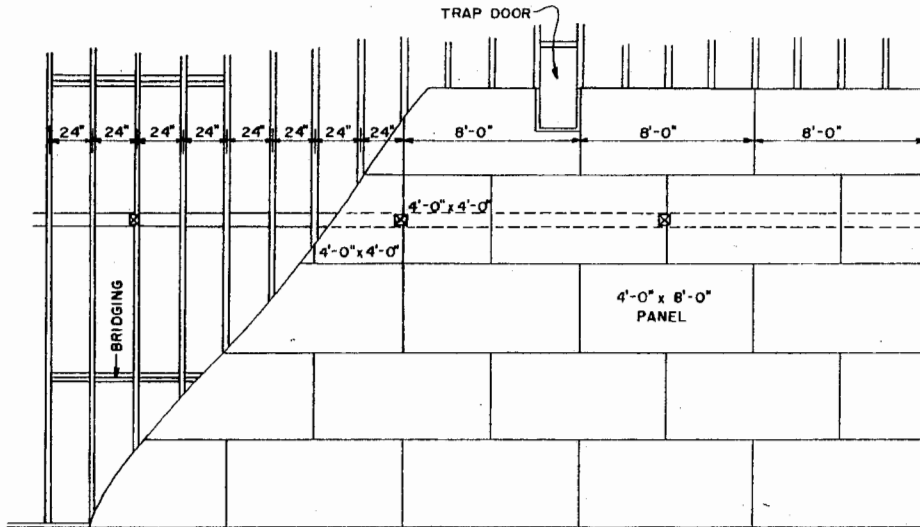


BEAM & JOIST DETAIL
SCALE: 1" = 1'-0"



BEAM SPLICING DETAIL
SCALE: 1/2" = 1'-0"

NOTE: NAILING FOR BEAM—
20d NAILS TO BE PLACED 1/2" FROM
THE TOP AND BOTTOM EDGES OF BEAM,
SPACED 24" APART STAGGERED, DRIVEN
FROM BOTH SIDES OF GIRDER
ALTERNATELY.

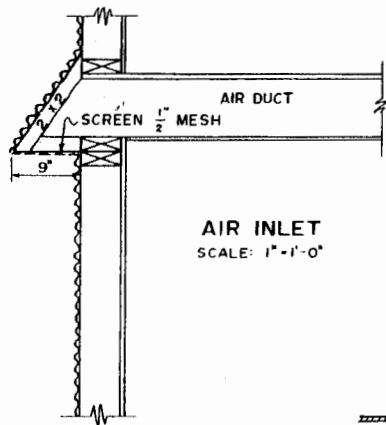


PLYWOOD FLOOR DETAIL
SCALE: 1/4" = 1'-0"

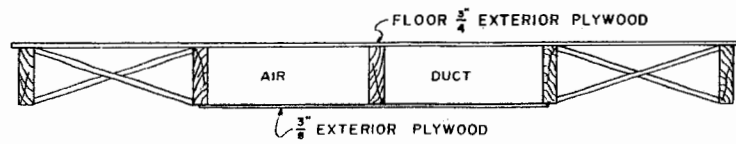


3 STORY BROILER HOUSE

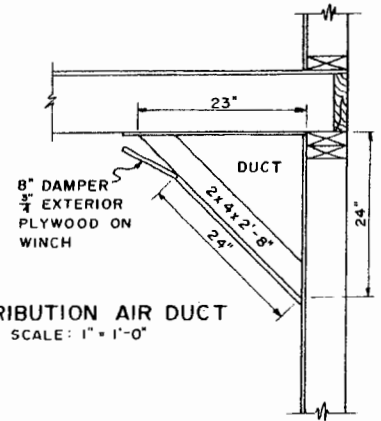
DEL. '67 EX. 6036 SHEET 4 OF 5



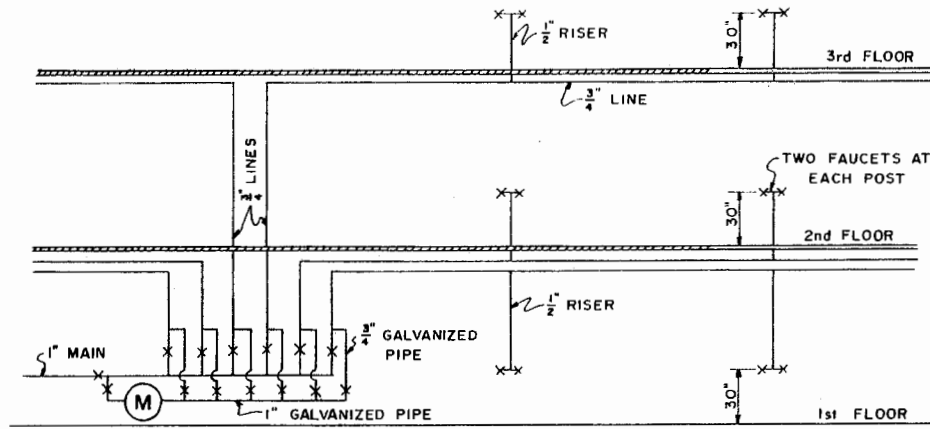
AIR INLET
SCALE: 1" = 1'-0"



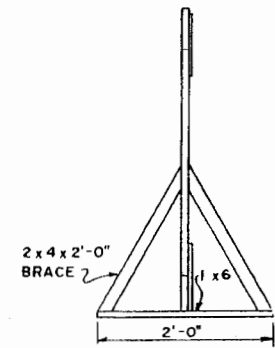
CEILING DUCT
SCALE: 1" = 1'-0"



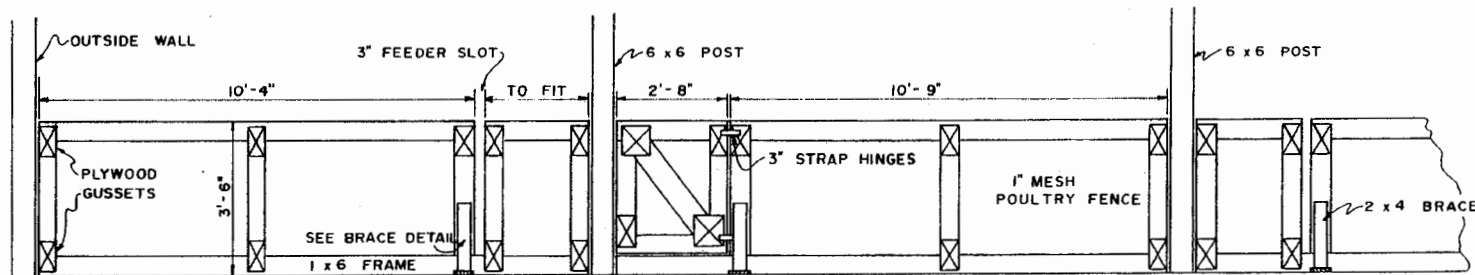
DISTRIBUTION AIR DUCT
SCALE: 1" = 1'-0"



PLUMBING DETAIL
SHOWING CONNECTIONS FOR MEDICATING



BRACE DETAIL
SCALE: 1" = 1'-0"



PEN PARTITIONS
SCALE: 1/2" = 1'-0"



Disclaimer

This site makes available conceptual plans that can be helpful in developing building layouts and selecting equipment for various agricultural applications. These plans do not necessarily represent the most current technology or construction codes. They are not construction plans and do not replace the need for competent design assistance in developing safe, legal and well-functioning agricultural building system. The LSU Agriculture Center, the Mid-West Plan Service, the United States Department of Agriculture and none of the cooperating land-grant universities warranty these plans.