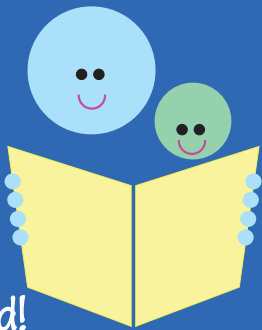


The Little Bookshelf



Please read to your child!

Fact Sheet #8 for baby's 8th month

In this packet you will find the eighth book for your child's Little Bookshelf. As you know, you are your baby's first and most important teacher. We hope you will use books to help your baby grow, develop and get ready for reading. Please read daily with your child. It will help your child learn and develop a love of books.

Why read to your baby? It helps babies develop and grow!
They develop:

- Language.
- Attention.
- Information about the world around them.
- Social skills.
- Intellectual skills.

Parents who read regularly to their children help ensure school-readiness for their child. Please read to your child every day.



For the latest research-based information on just about anything, visit our Web site: www.LSUAgCenter.com

This project is supported in part by funding from the Children's Trust Fund.
Louisiana State University Agricultural Center: William B. Richardson, Chancellor. **Louisiana Agricultural Experiment Station:** David J. Boethel, Vice Chancellor and Director. **Louisiana Cooperative Extension Service:** Paul D. Coreil, Vice Chancellor and Director. Issued in furtherance of Cooperative Extension work, Acts of Congress of May 8 and June 30, 1914, in cooperation with the United States Department of Agriculture. The Louisiana Cooperative Extension Service provides equal opportunities in programs and employment.