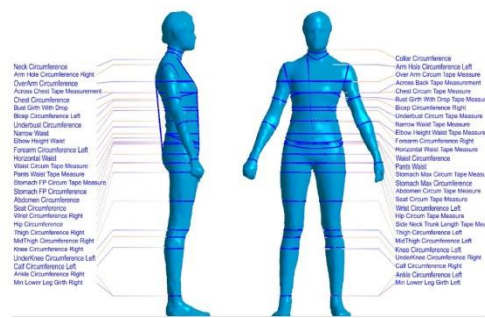


Adult Body Size and Shape Study



Participants are being sought for a study investigating the size and shape of the current US population. The purpose of this research is to assemble a data base of 3-D body scans for use in apparel product development.

What will be done?

- A 3D scan of each participant will be taken while wearing a snug fitting scanning suit
- Participants will fill out a brief demographic survey

Who can participate?

- Men and Women 18 years of age and older
- Pregnant women may not participate
- Participant must be physically able to stand for the scanning process

Is the scan safe?

- The scanner uses lasers similar to those found in interactive video games
- There are no known side effects to infrared depth sensor body scans
- Similar body scanners are available in select shopping malls for customer use

How much time will it take to participate?

- Allow 30 minutes to change into the scanning suit and complete the survey.

Is the information confidential?

- All participants will be assigned a number. Your name will not be associated with any data collected

How many people will be enrolled in this study?

- 5,000 adults will become part of the data base

Will I be compensated for participating?

- If desired you will be given a printout of your measurements along with a 3D computer generated true-to-scale image of your body shape and size.

To enroll in this study contact:

Laurel Romeo, PhD. Louisiana State University, Department of Textiles, Apparel Design & Merchandising
(225) 578-1724 Email: ldromeo@lsu.edu