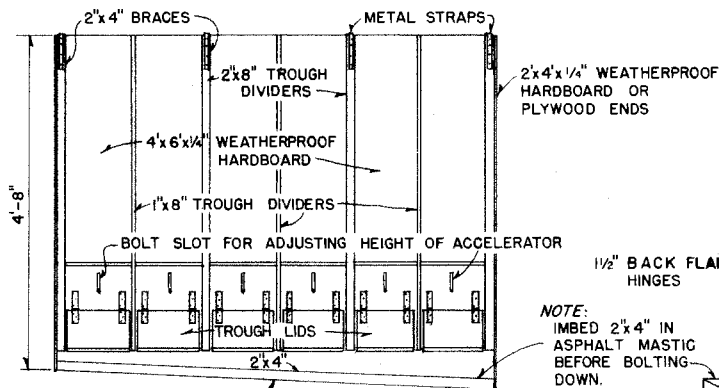
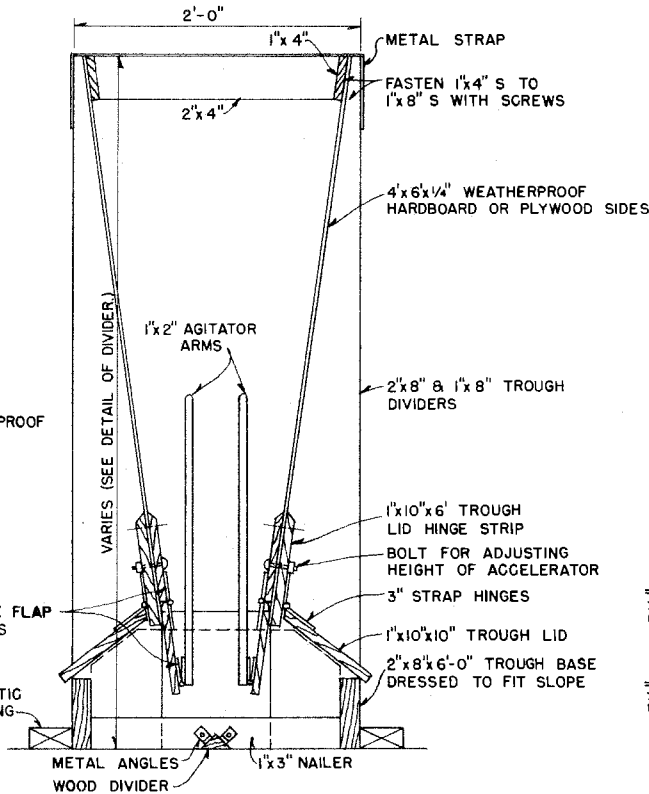


PLAN OF FEEDER
 (METAL STRAPS NOT SHOWN)
 SCALE: 3/4" = 1'-0"

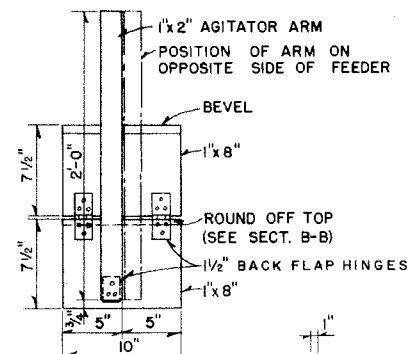
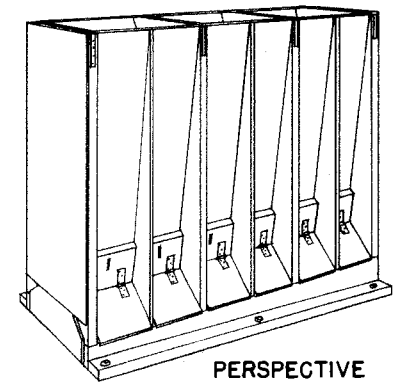


FLOOR SURFACE
 SLOPE 1/2" PER FOOT

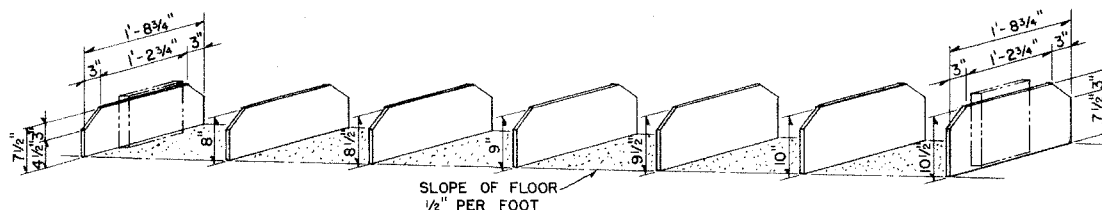
FRONT ELEVATION
 SCALE: 3/4" = 1'-0"



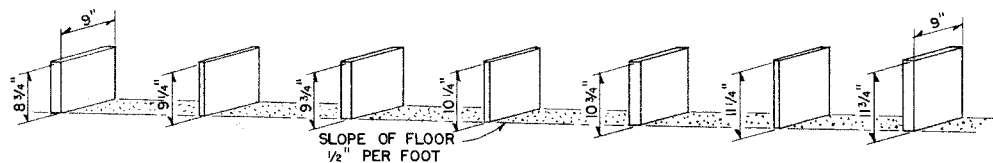
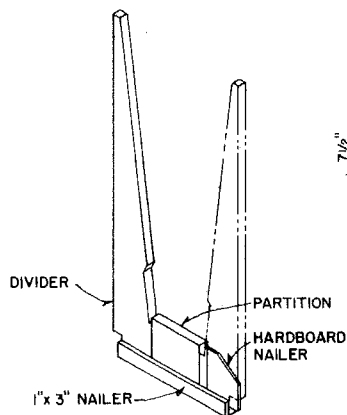
SECTION B-B
 SCALE: 1/2" = 1'-0"



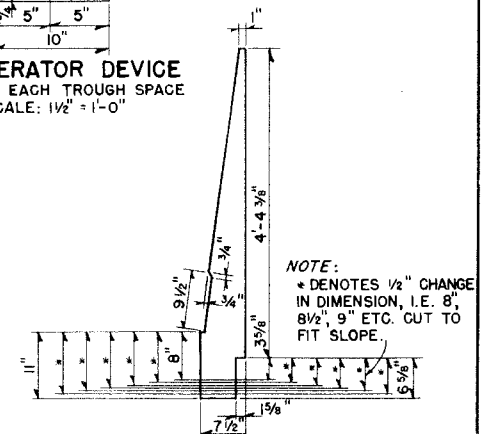
ACCELERATOR DEVICE
 ONE FOR EACH TROUGH SPACE
 SCALE: 1/2" = 1'-0"



ISOMETRIC VIEW OF NAILERS
 1/4" HARDBOARD 7 PIECES



ISOMETRIC VIEW OF PARTITIONS
 4 PIECES 2"x10" 3 PIECES 1"x10"



DIVIDER & END
 8 PIECES 2"x8", 6 PIECES 1"x8"
 SCALE: 3/4" = 1'-0"

NOTE:
 NUMBER OF PIECES AS NOTED ARE REQUIRED FOR EACH FEEDER.

DESIGNED FOR SLOPING FLOOR.
 CAPACITY: 30 BU. SMALL GRAIN.



SWINE FEEDER

Disclaimer

This site makes available conceptual plans that can be helpful in developing building layouts and selecting equipment for various agricultural applications. These plans do not necessarily represent the most current technology or construction codes. They are not construction plans and do not replace the need for competent design assistance in developing safe, legal and well-functioning agricultural building system. The LSU Agriculture Center, the Mid-West Plan Service, the United States Department of Agriculture and none of the cooperating land-grant universities warranty these plans.