



An educational program of the LSU AgCenter

In This Issue

| | |
|----------------------|-------|
| Fall Into Gardening | 1 |
| President's Message | 2 |
| Rusty's Message | 3 |
| AJ in the Garden | 4 |
| Lemon Verbena | 5 |
| Lemon Grass | 6 |
| Pam's Notes | 7 |
| Meeting Minutes | 8-9 |
| August Meeting Recap | 10 |
| MGs in Action | 11-12 |
| Fall Into Gardening | 13 |
| Fall Herb Festival | 14 |
| Herb Day 2010 | 15 |
| Beyond Basic Herbs | 16 |
| Garden Stroll | 17 |
| Rose Research | 18 |
| By-Law Amendments | 19-21 |
| Posting Hours Help | 22 |
| CE Hours for 2010 | 23 |
| Agenda for Sept. | 24 |
| Calendar | 25 |
| Directory | 26 |
| Editor's Notes | 27 |

For the latest
research-based
information on
just about anything,
visit our Web site:
www.lsuagcenter.com

THE NEWSLETTER OF THE ST. TAMMANY MASTER GARDENERS ASSOCIATION

VOLUME 13, ISSUE 9

September, 2010

FALL INTO GARDENING



Members of the "Fall Into Gardening" Workshop Committee had their initial meeting on August 13 at the AgCenter. Seated: Julie Deus, Chairman, and Judy Wood, Advisor. Standing: Linda Deslatte, Rodney Cross, Donna Brown, and Nancie Munn. Celicia Drennan is not shown. The workshop is scheduled for October 6 and will be held at the Southeast Louisiana Refuges Headquarters on Hwy 434 in La-combe. *See flier on page 13.*

President's Message

Elections and the Christmas Party

ELECTIONS

This month we will hear the recommendations of the Nominating Committee (Dianne Ramirez – chair, Betty Rose and Debora Litzenberger).

We will be filling the positions of President, Vice-President, Secretary and Treasurer. The proposed candidates have all accepted the invitation of the committee.

After the acceptance of the report, the floor will be opened for nominations from the floor.

The elections will take place at our October meeting.

CHRISTMAS PARTY

It's time to begin planning for our Master-Gardeners-only annual Christmas Party.

It is especially important to get an early start this year as we will probably need to rent a facility unless someone has a very large home.

And not just any ole facility. It will have to be one that allows alcohol. (For my rum based ice cream, of course.) Perhaps a meeting room in a Catholic Church or school?

We have an average attendance at our meetings of 50. The new class of Master Gardeners consists of 30 and they will be invited to attend. So we'll need a location that will accommodate 70 to 90 individuals.

We will need a place for everyone to sit and enjoy their food.

We'll be looking for location ideas at the September meeting.

Art

folsomart@bellsouth.net (985) 796-5878

War on Winter Weeds

by

Rusty Batty

It's been a hot summer battling problem lawn weeds. Record temperatures, high humidity nights and days and abundant rainfall have been tough. With weather like this it's no wonder we've had war with weeds. Weeds in our lawns seem to have the upper hand, but we can fight back and eliminate this chlorophyll foe before they start for winter. In fighting weed problems in the lawn one of the first (best) steps is to keep your lawn mowed properly. Most yards are cut extremely low. This gives an advantage to weeds that quickly appear in bare, thin lawn areas. Keep in mind "short shoots equal short roots". Cut your grass at recommended heights: 1-2" for Bermuda, Centipede and Zoysia: 2-3.5" for St. Augustine.

Proper fertility in the lawn helps keep the grass strong to out compete the wacky weeds. Generally, fertilize your lawn in spring, not late summer or fall. Weed and feed are little help in late summer because they have minimal effect on summer tough weeds and the lawn will not benefit from the fertilizer as it begins dormancy.

Chemical control options of upcoming winter weeds is possible. In late September to early October there are several herbicides to control typical winter weeds. For annual bluegrass, chickweed, dichondra, and crabgrass use Hi-Yield Dimension or Greenlight Crabgrass Preventer. For lawn burweed, dandelion, and wild geraniums use Green Light Portrait. For most broadleaf preemergence and early postemergence weeds use liquid Atrazine. Apply this in mid November and again in mid February.

Weeds will always be a battle in weak lawns. Using these materials as directed will help to win the war of winter weeds.

Dichaondra



Burweed



Annual Bluegrass



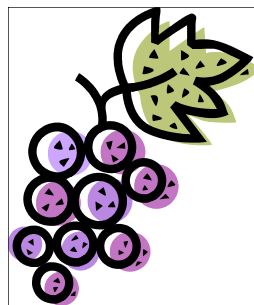
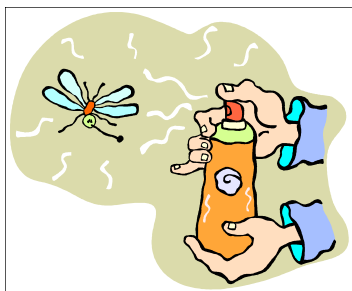
Hi Everyone,

We finally got around to clearing our pond. Jim did most of the work. Chinese privet could be used as a torture method. It just keeps growing thicker and thicker and everywhere you do not want it to grow. During this procedure besides heat exhaustion, ant bites, and poison ivy, we discovered several pond frogs living in the water of old pots. We tried to relocate them to the spacious new digs at the newly cleaned pond side but much to our surprise the frogs went back to their duckweed filled pots. Thus answering the age old question, "Is it better to be a small frog in a big pond or a big frog in a small pond?" Another deluge has begun outside as I begin typing this article. We are receiving about 5" of rain per week in our neighborhood. I feel as if Mother Nature is once again opposing my gardening efforts. The weeds have taken over the veggie area. The fall transplants are on the porch waiting patiently for some cool weather. The muscadines are ripe and are some of the biggest that I have ever harvested. Garlic is ready to plant for a spring harvest and the butternut squash are finishing their season. Mosquitoes are everywhere. I have received my first seed order of the fall season.



Any volunteers for the Mizell hummingbird and butterfly festival can email me. It is Sept 11th, 7am-5pm. Jim would appreciate the help.

Garlic, shallots, green onions, and parsley can be planted now. The fall season is right around the corner. It will have to be dryer and cooler before I get back in the garden. aj



Never too much LEMON VERBENA !

When life gives you lemons, you make lemonade. But when your garden is overflowing with lemon verbena, why not try lemon verbena granita, lemon verbena liqueur and lemon verbena preserved lemons? The lemon granita is refreshing, tart and sweet. It takes minutes to make. It's a great dessert to have on hand for drop in guests. Save the lemon shells to serve as bowls for the granita. Make the liqueur now to serve for the holidays. The preserved lemons with the lemon verbena is not common. The herb, lemons and olive oil combination can be used to drizzle over fish, chicken , veggies, olives, cheese, focaccia breads and mixed in vinaigrettes. This is also great for gift giving. Don't forget to use lemon verbena in your iced teas or steep to make a perfect tisane.

Enjoy ! Linda Franzo, Passionate Platter Linda@passionateplatter.ncom

PRESERVED LEMONS with LEMON VERBENA

**8 LEMONS, PREFERABLY ORGANIC, WASHED
GENEROUS AMOUNTS OF KOSHER SALT
FRESH squeezed Lemon juice as needed**

Sprigs of Lemon Verbena

Wash and dry lemons, working from "belly button to belly button", slice 4 quarters, STOP BEFORE YOU GET TO CENTER .

Fill Each wedge with 2 Tablespoons salt

Place snugly into a large canning jar

place in sprigs of Lemon Verbena in between, on top and on bottom of lemons –can't have too much verbena!

Cover with generous salt, seal tightly and leave out at room temp for a few days.

If there is not much lemon juice released , add some fresh squeezed lemon juice to cover and refrigerate for 3 weeks . The lemons will keep indefinitely if covered completely with lemon juice .

To use lemon : remove ¼ section, peel rind, no pith, and soak rinds in cold water 30 minutes to remove some salt. Then mince rind. If you do not use all the rind, place in zip lock bag and freeze to add to another future recipe .

LEMON VERBENA GRANITA

3 cups water

1 cup sugar

3-4 lemons to make ¾ cup juice

zest of 3 lemons

about 12 fresh Lemon Verbena leaves, minced

Heat water and sugar to boil, to dissolve sugar

Remove from heat, add lemon juice and zest

Add chopped lemon verbena, stir and freeze in a 2 inch high, 8 x 11 plastic container .

Remove granita out of freezer a few minutes before scraping into small cups or empty lemon shells . You can scrape granita into cups and place back into freezer before friends arrive .

LEMON VERBENA LIQUEUR

ABOUT 100 LEMON VERBENA LEAVES

6 MINT leaves

1 large lemon, quartered

3 cups sugar

3 cups water

2 ½ cups alcohol {95 proof- grain} vodka or everclear

Dissolve sugar in boiling water and cool.

Pour all ingredients into a large jar, close & shake.

Age 1 month, shaking occasionally.

Strain through coffee filter. Pour into dark bottle.

Age for 6 -8 months. Makes 6 cups



LEMON GRASS

Lemon grass (*Cymbopogon citratus*), a native of India, is widely used in Thai and Vietnamese cooking. Lemon grass is a tall, hardy perennial, which means once planted, the grass comes back year after year. It grows in clumps up to about three feet in height. Depending on the area you live in the plant will go dormant in the winter. In harsh climates the plant will need to be potted and wintered indoors. This aromatic herb is used in Caribbean and many types of Asian cooking and has become very popular in the United States. Most of the commercial crops for the United States are grown in California and Florida. Lemon grass is also used for medicinal purposes.



How to grow lemon grass

When you go to the grocery store find the freshest lemon grass plants. When you get it home, trim a couple of inches off the top of the lemon grass plants and peel away anything that looks somewhat dead. Take the stalks and put them into a glass of shallow water and put it near a sunny window.

After a few weeks, you should start seeing tiny roots at the bottom of the lemon grass herb stalk. It's not much different than starting any other plant you start in a glass of water. Wait for the roots to mature a little more and then transfer the lemon grass herb to a pot of soil with crown just below the surface. Place the plant in a warm, sunny spot on a window ledge or outside.

The rooted slips can be planted in a small hole dug in the ground or in raised soil beds. Plant 4 to 5 slips in clumps with reasonable spacing. Mix half the soil with compost and apply 100 grams of fertilizer on each clump 2 weeks after planting. Apply fertilizer monthly at the same rate and avoid heavy watering.

The plant will grow many years and hardly encounter serious pest and disease problems. It is advisable to replant after 4 or 5 years for better management of the growth.

<http://www.gardeningknowhow.com/herb/learn-about-growing-lemon-grass-plant.htm>

<http://ezinearticles.com/?How-to-Plant-Lemon-Grass&id=2020940>

How to store lemon grass

Store fresh lemon grass in the refrigerator in a tightly sealed plastic bag for up to 3 weeks. You can also freeze it for about 6 months without any flavor loss. Freeze as stalks, slices, or minced.

<http://www.gourmetsleuth.com/Articles/Exotic-Herbs-Spices-and-Salts-639/lemon-grass.aspx>

Uses for lemon grass

Lemon grass is used primarily for cooking. A piece of lemon grass stalk can be added to rice as it cooks or included when steaming vegetables.

Some uses other than an ingredient in a recipe include using lemongrass as a skewer or as a rack for baked fish.



It can be used in the garden as mulch, just like other grass clippings.

Submitted by:
Judy Wood



Propagation of Plants

This article is a refresher for propagating plants using the stem method. It is a good time to get plants growing and going for the Garden Show and Plant Sale in March, 2011. Also, it's not too late to start some plants for the Plant Swap in October.

Tips for Success

- Start with healthy plants.
- Use clean and sharp cutting tools.
- Use disease-free rooting media that provides the proper water holding capacity and air spaces.
(Use a good starter soil or peat moss, vermiculite mix.)
- Place in bright, indirect light.
- Do not allow leaves to touch each other.
- Keep rooting media evenly moist, but not soggy wet.
- Keep rooting media warm. (Put in a zip lock bag during winter.)
- Don't wait too long to transplant into individual pots. (I put my cuttings into small individual pots to begin with.)
- Make at least 4-6 cuttings of each plant you want to propagate.
- Happy propagating!!!



I have a list of volunteer opportunities that will be coming up in the next 2 months. You can put these on your calendar.

Sept. 11--Butterfly/Hummingbird Festival at Jim Mizell's nursery in Folsom. Volunteers are needed from 7:00-5:00. There will be seminars so you can earn education hours, too. Please email AJ at ajjim@hotmail.com to sign up.

Sept. 28--Slidell Herb Festival at the Slidell Library on Robert Road. Volunteers are needed to help set up tables, etc at 2:00. The festival begins at 4:00 -7:00. Please email Denise Stearns at 2stearns2@charter.net or Betty Rose at bettyrose@charter.net for more info.

Oct. 6-- "Fall Into Gardening" Workshop at Southeast Louisiana Refuges Headquarters in Lacombe. Volunteers are needed to help with parking and to man table clinics. Please email Julie Deus at jdcalla@aol.com.

Oct. 15--MG Field Trip to MSU Fall Fest at Crystal Springs, MS. Sign up information will follow in a separate email.

Oct. 16--"Wild Things" Southeast LA Wildlife Refuge Headquarters, Lacombe. MG's are needed at the Butterfly Garden and at a MG booth/table. Please email Denise Stearns at 2stearns2@charter.net with your name, phone number, with the hours and jobs you would like to work. If you have no preference, you will be assigned when and where you are needed.

Oct. 20--MG Plant Swap at the Fairgrounds barn

Oct. 22—Slidell Memorial Rehab Garden will hold a Plant Sale at Slidell Memorial Hospital. Email Pete Pericone at periconp@bellsouth.net for more info.

Pam Keating
MG Plant Booth and Membership Chairman

St. Tammany Parish Master Gardeners
General Membership Meeting Minutes

The Aug. 18, 2010 meeting of the St. Tammany Parish Master Gardeners was held at the Parish School Board, was called to order by President, Art Scott at 10:10 AM. Fifty members were present. Rusty Batty, County Agent, lead the Pledge of Allegiance and offered a prayer.

Dolph Denley from Denley's Horticultural Services spoke about Turf Management and Horticultural Sprays.

County Agent: Rusty Batty discussed the AgCenter budget cuts and the implications to our Center and the Master Gardeners. Rusty asked that a reminder be added to these minutes: Master Gardeners are encouraged to contact local and state politicians to voice any concerns that these budget cuts might affect. Registering your volunteer hours can help to bring attention to the work our membership does.

The new class of Master Gardeners has started with 9 men and 21 women. If you would like to sit in on a lecture, make a reservation through the Ag. Office.

A motion was approved to accept the minutes from the July 21st meeting.

President's report: In line with suggestions regarding the length of the business portion of our meetings, some changes in the meeting format will take place. Program speakers will speak first and a stream lined meeting will follow today.

Treasurer's report: Dianne Ramirez could not attend today's meeting but will have the Budget Committee report at the next meeting. The treasurer's report was submitted and the minutes were approved.

Vice President's report: Glenda Nanz announced that Suzanne Sloan will speak about Bromeliads at the next meeting with a tour of her home to follow.

Committee reports:

Bylaws Committee -Judy Wood explained that a copy of the bylaws, with changes, is available today and will also be in the GARDENGOER. Members are asked to read the proposed changes for the next meeting's vote.

Please note, Article 6 Sect 1 D needs to be reviewed. Suggestions made to revise the MG meeting process was also reviewed from the survey taken.

Tomato Tasting Awards - A. J. Heinsz-Bailey distributed awards for the best tomatoes in several categories from the Tomato Tasting held at the June meeting.

Slidell Herb Garden - Betty Rose announced the Fall Herb Fest at Slidell Library will be Sept. 28th from 4-7 p.m. on the grounds of the library. Denise Stearns, chairperson, explained that the Festival will include information about planting and preserving fall herbs. Volunteer opportunities are available. Set up starts at 2 p.m. A motion was made and approved that the STPMG endorse this event.

Continued on page 9

Lacombe Butterfly Garden - Denise Stearns announced that the 'Wild Things' program will be held October 16th. Volunteers are needed from 10-5 p.m. to assist with answering questions and touring visitors through the Butterfly Garden. A motion was made and approved to have a STPMG table for educational resources. Fall Seminar - Julie Deus announced that the Fall Seminar will be held Oct. 6th from 9-12:30 p.m. at the Southeast Louisiana Wildlife Refuge Headquarters in Lacombe. Volunteers are welcomed. A motion for the STPMG to endorse the event was passed.

New business: A field trip to the Mississippi State Fall Garden Event will be Oct. 15th at a cost of \$10.00. Bus transportation from the Covington Fair Grounds will take members to the location near Jackson, Mississippi. Reservations, through the AgCenter, are needed and if there are extra seats available, they will be opened to friends and family. For more information about the Plant Show: go to

www.msucares.com/fallfest.

-The hospitality committee is looking for someone to host the Christmas party.

-STPMG coffee mugs will be available next month.

-Pete Pericone announced that the Slidell Memorial Hospital Rehab. Garden will have a plant sale on Oct. 22nd. They need plants donated. The STPMG plant swap will be Wednesday the 20th so any additional plants will be appreciated.

-Mizell's Nursery is having their annual Butterfly and Hummingbird Festival on Sept. 11th. Volunteer opportunities are available.

Motion to adjourn the meeting was passed at 12:10 pm.

Submitted by: Nancy Berulis, Secretary

August Meeting Recap



Dolph Denley spoke on turf management and horticultural sprays. (I CE hour)



Julie Deus announced the upcoming Fall Into Gardening workshop to be held October 6..



Denise Stearns needs volunteer docents for the butterfly garden at "Wild Things" October 16.



Rodney Cross and Mary Ann Brannan won the door prizes of potted pothos.



Despite a last minute change of venue due to a lightening strike at the National Guard Building, we had 50 people attend the meeting. Donna Moran and Hazel Harrod are seated at the front.

Master Gardeners in Action



Sharon Murphy

The Slidell Library Herb Committee held an “Herb Gathering” August 11. Judy Wood spoke about lemon grass and demonstrated how to cut it for cooking and how to divide the plants. Sharon Murphy, a local Herbalist, spoke about medicinal herbs. The committee held a clean up day on the 23rd to prepare the herb garden for the upcoming Fall Herb Festival on Sept. 28th. *See flier on page 14.*



Judy Wood



The Herb Gathering was well attended



Back: Donna Dicharry, Pattie McGinnis. Front: Camille Schwandt, Denise Stearns and Ruthanne Johnson



Our esteemed leader, Art Scott, and Keith Knight work on an irrigation leak at the Slidell Herb Garden. Pete Pericone is not shown. Thanks for the photo, Pete!

More Master Gardener Action

Fall and Winter Vegetable Garden Maintenance and Harvest Gerard Ballanco, M.D.



Crops for the fall and Winter

- Beets
- Carrots
- Cole Crops (Cauliflower, Broccoli, Brussels sprouts, cabbage, kohlrabi)
- Greens
- Lettuce
- Onions
- Peas, Beans
- Tomatoes, eggplant, peppers

Peas

- Easy, many varieties; cool weather crop; very weather dependent
- Direct seed 9/1-9/15; 12/15-1/31
- Require no additional N after row preparation. Use "inoculum"
- Trellis recommended; vines must be trained

In early August, Dr. Ballanco gave seminars on fall and winter vegetable gardening at the Folsom Library, the Causeway Branch Library, and the Slidell Library. All of the seminars had standing room only crowds. He is a wonderful, professional quality speaker who injects a bit of humor into his vast information on gardening. If you ever have a chance to hear Jerry speak, please go!



“FALL INTO GARDENING”

A Fall Gardening Workshop

St. Tammany Parish Master Gardeners Assn.

in conjunction with the

LSU AgCenter

Invite you to attend a workshop

Wednesday, October 6, 2010

9:00am to 12:30pm

(Check-In Begins at 8:00am)

Southeast Louisiana National Wildlife Refuge Headquarters

Bayou Lacombe Centre`

61389 Hwy 434, Lacombe, LA 70445

Topics include:

Fun & Fabulous Fall Plants

Vegetable insects that might “bug” you

Many ways to Productive Mini-Gardening

and

Expert information from Master Gardeners at 6 “Table-Top Clinics”

Registration fee of \$15 per person due by 09/30/10

Space is Limited. Registration will close when full.

Registration deadline 09/30/10. Make checks payable to STMG

Mail to STMG, Fall Vegetable Seminar c/o LSU AgCenter, P. O. Box 5438, Covington, LA 70434

For Further Info: LSU AgCenter 985/875-2635

Name: _____ Number Attending: _____

(Please Print)

Additional Attendees: _____ Amount Enclosed (\$15 per person): _____

(Please Print)

Address: _____

Phone: _____ E-Mail address: _____

| |
|--|
| OFFICE USE ONLY: Amount enclosed: _____ Confirmed: _____ |
|--|



Discover what's inside ★

Fall Herb Festival

Tuesday, September 28, 2010

Slidell Library Herb Garden
4 to 7 PM

Ask the Expert

How to grow and use fall season herbs
Guided Tours of the Master Gardener Herb Garden

Children's Table

Plant a miniature fall herb garden to take home

Herbal Foods for Tasting

Teas, dips, and other foods using fall herbs / recipes provided

Make an Herbal Sachet

Natural drawer fresheners are one of those little touches that can *make* a big difference.
Supplies provided to create the small bags

Using Herbs

Knowledgeable speakers from our community
Learn how to make vinegars
Learn how to preserve herbs for later use

The Fall Herb Festival is one of several educational events sponsored by
the St. Tammany Master Gardeners, a program offered by the LSU AgCenter, and
the Friends of the Slidell Library.

In addition

Community vendors will sell herb plants



HERB DAY 2010



"HERBAL-ICIOUS DESSERTS"

Desserts

made with
mint
basil
dill
rosemary
lemon balm
lemon verbena
and other herbs

Featuring
**ROBIN LEA, OWNER, BAYSIDE DINNERS
AND CHEF CARL HAAS**

**Saturday, September 18, 2010
9 a.m. – 12 noon
(Registration and sales begin at 8:30 a.m.)
Botanical Center, Mobile Botanical Gardens
5151 Museum Drive
Mobile, Alabama 36608**

Cost: \$25

(Includes light lunch, door prizes, and information packet)

Registration is required and seating is limited.

And.....

A
Harry Potter
Surprise!

For Information call: Mobile Botanical Gardens, 342-0555

| | |
|--------------------|---------------------------------------|
| 9:00 – 9:15..... | Welcome and Introductions |
| 9:15 - 10:00..... | Herbal-icious Desserts |
| 10:00-10:30..... | Break, Plant Sales, Door Prizes |
| 10:30 – 11:30..... | More Desserts and Growing Herbs Q & A |
| 11:30 – 12:00..... | Lunch, Plant Sales, Door Prizes |

. Cut here and send form with registration fee.

HERB DAY 2010 REGISTRATION FORM

(Please PRINT clearly)

Name: _____ Phone: _____

Address: _____ City/State/Zip: _____

Email address: _____

Please make your check payable to the Gulf Coast Herb Society (GCHS) and mail to:

Gulf Coast Herb Society, P.O. Box 81817, Mobile, AL 36689

The Herb Society of America

Southeast District

Presents

Branching Out Beyond Basic Herbs

Registration Form

Name _____

Address _____

City _____

State/ Zip Code _____

Phone _____

E-Mail _____ confirm by email? _____

Will you need transportation? _____

Can you provide transportation? _____ How Many? _____

Please indicate activities/preferences/needs:

| | Number | Cost | Total |
|---|--------|----------------------|-------|
| Friday 10:00a.m. Exploring Fairhope, AL 11:30a.m. Garden tour at the Grand Hotel Lunch at The Grand Dining Room | | Yes \$18- \$20 | N/A |
| Friday 3:00 pm Garden tour of herb gardens at Mobile Botanical Garden | | No | N/A |
| Friday 6:30 pm Dinner at Local Restaurant (Dutch Treat) | | Yes | N/A |
| Early-Bird Conference Registration (Member) | | \$55 | |
| Early-Bird Conference Registration (Non-Member) | | \$60 | |
| I prefer a Vegetarian Lunch | | Yes | No |
| I have other special needs (Specify) | | Yes | No |
| *Sunday Bellingrath Home and Garden Post- Conference Tour | | \$15* | |
| ***Late registration - received after October 7th | | \$60 | |

Total cost \$ _____

No refund after October 7th

Information regarding Friday night restaurant choice to follow with confirmation notice via email or phone contact.

Mobile Botanical Garden October 22-24, 2010



Description:

You are cordially invited to join us at The Southeast District Fall Gathering, "Branching Out Beyond Basic Herbs", at the Mobile Botanical Gardens in Mobile, Alabama. Linda Franco will entertain us with fascinating information and tasty tidbits on the olive. Other exciting speakers and activities are planned. On Friday we will gather for a reception and tour the herb garden maintained by the Gulf Coast Herb Society at Mobile Botanical Gardens and a post-gathering garden tour of Bellingrath is also planned.

Location:

Mobile Botanical Gardens Mobile, Alabama

Contact Person: Rae McKimm

Phone#: 870-867-3862, 501-276-3214 (cell)

Contact Email: chgarden@ipa.net

Please Make All Checks Payable To:
Herb Society of America, Southeast District

Please return registration with payment to:

Rae McKimm
HSA Southeast District
152 Crystal Hill Lane
Sims, AR 71969

Editor's Note: For a PDF brochure on this weekend gathering, email me @ dklitz@charter.net. Thanks, Debora

Hammond Research Station

Garden Stroll

Open to the Public – Free Admission

Saturday, Oct. 2, 2010
9 a.m. – noon

400 varieties of blooming plants!

Largest herbaceous ornamental
plant trial in Louisiana!

See what's new in the plant world
in one location!



Hammond Research Station
21549 Old Covington Highway (Hwy. 1067)
(next to LynHaven)

www.lsuagcenter.com/Hammond

LSU AgCenter

Rose Research Morning

Green Industry, Rosarians and Home Gardeners Invited!!!

**Wednesday
October 20, 2010
9 a.m. – 11:30 am
No admission charged!!!**

*'Griffith Buck' Roses – 86 varieties
All varieties 'Knock Out' Roses
National 'Earth Kind' Trial Roses
'Drift' Series – Ground Cover Roses
and Much More*



**Burden Center
Ornamental and Turfgrass Research Facility
4560 Essen Lane, Baton Rouge, LA
Contact Allen Owings at
aowings@agcenter.lsu.edu or 225.603.8096**

The LSU AgCenter has a Rose Research Morning scheduled for Wednesday October 20th at the Ornamental and Turfgrass Research Facility at Burden Center in Baton Rouge. 9 am until 11:30 am. Home gardeners, rosarians, master gardeners and green industry professionals are invited. No pre-registration required. No registration fee. Information is attached. Hope to see you there

Proposed Amendments 2010

St. Tammany Parish Master Gardener Association By-Laws

The Bylaws Committee reviewed the results of the membership survey completed in July 2010. In addition other suggestions from the membership were incorporated into the proposed amended Bylaws for the STPMG.

This document contains only the items included in the proposed amendments. Proposed text for deletion is printed in ~~strike through~~. Suggested new language is printed in **bold**.

A brief explanation for each change immediately follows in a different type font.

Proposed Bylaws Amendments

St. Tammany Parish Master Gardener Association (In support of the Louisiana Agricultural Extension Service)

Article III. Membership

- Section 1. Members of the association shall be graduates of a Louisiana Master Gardener Program, administered by the St. Tammany Louisiana Agricultural Extension Service, the Louisiana State University System. Graduates of Master Gardener Programs administered by Extension Services other than the State of Louisiana may seek membership in the STPMG by **contacting the local county agent.** ~~submitting an application to the Membership Committee.~~ The **County Agent** ~~Membership Committee~~ shall determine if that training **(from another state)** is equivalent to the Louisiana Program and take appropriate action.

This places into the bylaws the action that is presently taken when a MG who was trained in a state other than Louisiana applies to become a member of STPMG. See also section 5.

- Section 2. Classes of members and requirements for each shall be established by the Board of Directors subject to approval by the general membership. The classes of membership are New Master Gardener (most recent graduate of the STPMG training) ~~and~~ Established Master Gardener (MG who has completed one year as a New Master Gardener) **and Inactive Master Gardener (MG in good standing who desires to suspend their volunteer commitment for one year).**

This creates an Inactive Membership category for a member who in the previous year has completed the volunteer/education hour requirement and in the current year is unable to complete the requirement. This member desires to suspend his/her membership for one year.

- Section 3. To maintain good standing, each member must have paid the dues for the current year and have completed required volunteer service hours and required continuing education hours as follows:

- C. All volunteer and education hours must be documented in the LSU Ag Center Master Gardener web site between January and December 31 of the current year.**
- D. Members who have not fulfilled their volunteer and education hours as stated under C, are not considered to be in good standing and will be removed from the membership role.**

This places in the bylaws exact direction for the documentation of volunteer and education hours and the consequences for failure to document the required hours – removal from the membership role.

Continued on page 20

Proposed Amendments 2010

Section 5. Requirements for recertification will be established by the Membership Committee **under the guidance of the County Agent and shall be** subject to approval by the Board of Directors and the general membership.

This places into the bylaws the action that is presently taken when an MG who was trained in a state other than Louisiana applies to become a member of STPMG. See also section 1.

Article V. Fiscal Year

Section 2. Dues are payable **October** ~~November~~ 1 and are delinquent December 31.

At the request of the Membership Committee, expands the time for accepting dues one month – October 1 to December 31.

Article VI. Officers (Board of Directors)

Section 1. The Board of Directors shall be an elective body composed of the following officers and members: President, Vice President, Secretary, Treasurer, and immediate Past-President. The Board of Directors shall manage the business/affairs of the Association. A simple majority of the Board is required to conduct business. **Business conducted by the Board includes, but is not exclusive to:**

- A. **Monthly review of budget and financial report by the Treasurer.**
- B. **Review of monthly reports from committee chairpersons.**
- C. **Approval of recurring expenditures of those previously approved by the membership that are equal or less than \$500 as long as the budget is not exceeded.**
- D. **Approval of new expenditures up to \$250. (This may need separate consideration.)**
- E. **Emergency decisions that cannot wait until a membership business meeting.**
- F. **Providing written monthly updates of Board business decisions in the Gardengoer.**
- G. **Providing verbal updates of Board business at each planned general membership meeting.**

Section 2. **The Board does not have the authority to approve any new activities.**

The above two sections define the actions that the Board of Directors may take at its meetings.

Section 4. The Board of Directors shall meet monthly or as necessary. **The general membership shall be given notice of the time and place of Board meeting by publication in the Gardengoer.**

Outlines what notifications shall be published in the Gardengoer.

Article VII Duties of Officers

Section 3 The Secretary shall:

- C. **Provide minutes of general and Board of Director meetings to the membership through The Gardengoer.**

Also outlines what notifications shall be published in the Gardengoer.

Section 3. The Program Committee shall:

- E. **Arrange, coordinate, Organize and publicize STPMG field trips.**

This clarifies the responsibilities of the Program Committee for field trips.

Continued on page 21

Proposed Amendments 2010

Article VIII Committees

Section 8.

The Projects/Seminar Committee shall:

- A. Consist of a member for each project voted on and accepted by the general membership. This member will be the project's sponsor or appointed by the President if the sponsor is unable or unwilling to assume the role.**
- B. Assist members in preparation of proposed projects/seminars by providing guidance for educational requirements, funding, volunteer requirements, and anticipated ongoing efforts to keep the project active.**
- C. Publicize new projects/seminars, related volunteer opportunities, and project updates for ongoing projects in the Gardengoer.**

This creates a new committee to assist, provide guidance and oversight to members/sponsors of projects and seminars supported by the STPMG,

Section 9.

Committee Chairs will provide monthly updates to the membership in The Gardengoer. Updates and time for discussion will be presented to the membership at regular business meetings.

This indicates that the membership will be informed about the action of committees in the Gardengoer and at regular business meetings.

These proposed amendments to the Bylaws are submitted for your consideration.

The Bylaws Committee:

Mary Ann Brannan
Rodney Cross
Chere Currault
Pam Keating
Betty Rose
Deborah Turton
Pam Twardzik
Judy Wood

Assistance with Posting Volunteer and Education Hours
Wednesday, September 15
9 AM
LSU AgCenter
(prior to MG September Meeting)

If you would like assistance with posting volunteer and education hours on the LSU Ag Master Gardener web site Pam Twardzik and Judy Wood will be available for 45 minutes (9-9:45 AM) at the LSU AgCenter. You will learn how to log on, how to register, how to record hours, what categories to use, and other questions. This will be one-on-one training.



Explanation of Most Commonly Used Volunteer Activities

To help with recording volunteer hours here are the most commonly used volunteer activities with a few examples. There are additional categories to select from if these do not fit your activity. For assistance contact Judy Wood, phone 882-5353 or email jazzwood@charter.net

LMG Parish Program – This is the category to select when the activity does not fit into another category.

Plant Sale - This is the category for all functions that support the Spring Plant Sale.

Answer Telephone Calls – Use this category when you are assisting in the AgCenter and answering phone calls.

LMG Office Client Consultation – Use this category when working with clients that come to the AgCenter Covington office.

Civic & Community Event – Select when participating in a community event that incorporates horticulture such as the Herb Festival.

Group Presentation/Speaker's Bureau – This category is for preparation and giving a program or as a speaker to community groups.

LMG Newsletter – Use this category if you write an article for The Gardengoer.

Plant-A-Row™ & Food Bank – Use this category for time spent specifically for growing, harvesting, and taking produce to the community food bank. This includes Second Harvest. If you are sharing extra produce that you have grown, then report only the time related to taking the produce to the food bank.

School Gardens K-12 – Select this category if you help with horticultural education directly related to a school garden that is not associated with 4-H or JMG programs.

School Programs K-12 – Select this category if you help with horticultural/agricultural/garden-related education directly related to a school garden other than directly related to a garden.

Garden Show – Select when volunteering at an LSU Ag Center/LMG sponsored or approved event that primarily features gardening and gardening related subjects.

Submitted by: Judy Wood

CE hours

| | | Hours at monthly meetings | other MG sponsored hrs |
|-----------|--------------------------|---------------------------------|---------------------------|
| January | -tree roots | . 5 hour | |
| February | -camellias | 1 hour | |
| | -grow your own | | 5 hours |
| March | -Pine Island | .5 hour | |
| April | -Plant Swap | none | |
| May | -Scholarship | | |
| | -Daylilies | .5 hour | |
| June | -Azaleas | 1 hour | |
| | -Field trip | | 4 hours |
| July | -landscape design | .5 hour | |
| August | -turf mgmt | 1 hour | |
| | -herb group | | 1.5 hours |
| | | 5 hours | 10.5 hours |
| September | -bromeliads | _____ | |
| | -field trip to Suzanne's | _____ | |
| | -herb festival | | _____ |
| | -fall veggie seminar | | _____ |
| Oct | -plant swap | none | |
| Nov | -windmill nursery | _____ | |
| Dec | -party | none | |

There is still the potential to make your goal of 6 CE hours available just by attending the monthlies.

Art Scott

AGENDA for September 15th, 2010 General Meeting

1-Call to order & report quorum present

2-Opening ceremonies

3-Program - Bromeliads – Suzanne Sloan

-Tour of Suzanne's bromeliad garden in Beau Chene following the meeting.

4- Comments by Rusty (County Agent/ MG Adviser)

5-Minutes from previous meeting

6-Officer's reports

-President – Art Scott

-Vice President – Glenda Nanz

-Treasurer – Dianne Ramirez

7-Committee Reports

-Finance Committee – Dianne Ramirez

-Nominating Committee – Dianne Ramirez

-following the report, the floor will be opened for any additional nominations.

-Hospitality Committee – Christmas Party – Mary Ann Brannan

8-Project Coordinator Reports

-Fall Herb Fest (Sept 28)– Betty Rose/Denise Stearns

-Fall Seminar (Oct 6)– Julie Deus

-Fall Field Trip to MSU Fall Plant Show (Oct 15) – Merle Mulkey

-Lacombe Butterfly Garden – Wild Things (Oct 16)– Denise Stearns

-Slidell Rehab Garden – Plant Sale (Oct 22) – Keith Knight

9- Unfinished business

-vote on bylaws amendments proposed last month

10- New Business

11- Door Prize

12 -Announcements

13- Adjournment

September, 2010

- 11 Jim Mizell's **Butterfly/Hummingbird Festival**, Mizell's Nursery, Folsom.
7 am-5 pm. Volunteers needed. Contact AJ at ajjim@hotmail.com. *See page 4 & 7.*
- 15 9:00 am- 9:45 am Pam Twardzik and Judy Wood will help you post your volunteer hours at the AgCenter office. *See page 22*
- 15 10:00 am Monthly meeting at the National Guard Bldg. Speaker: Suzanne Sloan on Bromeliads. Pre-ordered mugs will be available for pickup. The slate of officers for 2010 will be announced by the Nominating Committee. Nominations from the floor will be accepted.
- 18 "**Herbal-icious Desserts**. 9-12, Mobile Botanical Gardens. \$25. *See flier page 15.*
- 28 **Fall Herb Festival**, Slidell Library on Robert Rd. 4pm-7pm. Set up starts at 2. Volunteers needed. Contact Denise Stearns at 2stearns2@charter.net. *See flier pg. 14*

October, 2010

- 2 Hammond Research Station, **GARDEN STROLL**, free admission. 9 am - noon.
See flier page 17.
- 6 "**Fall Into Gardening**", a fall gardening workshop. Southeast Louisiana Wildlife Refuge, Hwy 434, Lacombe. Pre-registration required. \$15 fee. *See flier on pg. 13.*
- 8 **Southeast Louisiana Nursery Asso. Trade Show** 8:30 am - 3:15 pm, Castine Center, Mandeville. 5 speakers. www.selna.net or aowings@agcenter.lsu.edu or 225.603.8096
- 13 **Herb Gathering** at the Slidell Library. 1:00 - 3:00 pm. Denise Stearns will talk about stevia.
- 15 Field trip to MSU Fall Fest at Crystal Springs, MS. An email will be sent out soon with registration details. <http://msucares.com/fallfest/index.html>
- 16 "**Wild Things**" at Southeast LA Wildlife Refuge Headquarters in Lacombe, Hwy 434. Butterfly garden needs MG volunteer docents. Activities for children/adults. All free. For info: www.fws.gov/southeastlouisiana/calendar.html. To volunteer: Denise Stearns at 2stearns2@charter.net
- 20 10:00 a.m. Plant Swap at the Fairgrounds Barn in lieu of the regular meeting.
- 20 **Rose Research Morning**, Burden Center, Baton Rouge. 9 am - 11:30 am, free.
See flier page 18.
- 22-24 **Branching out Beyond Basic Herbs**, Mobile Botanical Garden. Registration fee. *See flier page 16.*

November, 2010

- 17 10:00 a.m. Monthly meeting at the National Guard Bldg. Todd Ellefion of Windmill Nursery will be the speaker.

December, 2010

- 15 Christmas Party. No plans have been made to date.

STMGA Directory

PRESIDENT:

Art Scott
796-5878
folsomart@bellsouth.net

VICE PRESIDENT:

Glenda Nanz
845-4494
nanz@att.net

TREASURER:

Dianne Ramirez
626-1631
adram@bellsouth.net

SECRETARY:

Nancy Berulis
643-8813
nberulis@bellsouth.net

COORDINATOR:

Rusty Batty
875-2635
rbatty@agcenter.lsu.edu

LSU AGCENTER OFFICE:

Mary Beth Kaizer
875-2635
MKaizer@agcenter.lsu.edu

**WORKSHOP ADVISOR &
VOLUNTEER WEB ADMINSTRATOR:**

Judy Wood
882-5353
jazzwood@charter.net

MEMBERSHIP CHAIRMAN:

Pam Keating
892-4445
tvkpam@bellsouth.net

NEWSLETTER:

Debora Litzenberger
882-7986
dklitz@charter.net

PUBLICITY / HISTORICAL:

Glenda Spano, *Scrapbook*
845-0900
runmimirun@yahoo.com

SMH REHAB GARDEN:

Leslie Landeche
639-9963
rocknlou@bellsouth.net

SLIDELL HERB GARDEN:

Betty Rose
863-3418
bettyrose@charter.net

Linda Franzo

781-4372
Linda@passionateplatter.com

LACOMBE BUTTERFLY GARDEN:

Denise Stearns
757-864-4760
2stearns2@charter.net

OTIS HOUSE BUTTERFLY GARDEN:

Ann Durel
626-1656
adurel@bellsouth.net

Notes from the Editor:

Fall is just around the corner. Children are back in school, our Saints are back on the field and fall gardening season is here. The oppressive heat of summer is almost history and we can get back to what we love. There are several opportunities to earn those volunteer hours many of you need before the end of the year, so please take advantage of the fall weather and get out there and get those hours. There are two separate workshops and the Hummingbird Festival at Mizell's to earn your volunteer hours. There are numerous seminars available for CE hours also. Most importantly, when you earn those volunteer hours and CE hours, POST them on the website. If you don't post them, they don't exist! Judy and Pam will offer their assistance at 9 a.m. before the September meeting at the AgCenter for those who need help logging their hours on the website.

For those who know how to log their hours and just don't remember to do it, consider this your official reminder. Here is the website for you convenience:

http://www.lsuagcenter.com/en/lawn_garden/master_gardener/Reporting+Volunteer+Hours/

Remember, there will be consequences this year for not fulfilling your membership requirements.

Debora Litzenberger
dklitz@charter.net



THE GARDENGOER

THE NEWSLETTER OF THE ST. TAMMANY MASTER GARDENERS ASSOCIATION

Cooperative Extension Service

St. Tammany Parish

1301 N. Florida Street

Covington, LA 70433

Phone: 985-875-2635 (Covington)

Fax: 985-875-2639

Website: www.lsuagcenter.com/mastergardener/