



Master Gardener™

An educational program of the LSU AgCenter

In This Issue

Bricks Awarded	1
President's Message	2
Rusty's Message	3
Citrus & Horseradish	4
January Minutes	5-6
Jan. Meeting Recap	7
Award Recipients	8
Jan. Board Minutes	9-10
Membership & Comments & Suggestions	11
Festival of Flowers	12
Mentoring Program	13
Rooting the Future	14
Advanced MG	15
Dr. Ballanco's seminars	16-17
Incredibles & Edibles	18
Camellia Garden Stroll	19
Beekeeping Classes	20
Plant Show Volunteers	21
Show Offs	22
Herb Committee News	23
Announcements	24
Directions & Maps	25-27
STPMG Programs	28
Agenda	29
Calendar, Directory, Editor's Notes	30-32

For the latest research-based information on just about anything, visit our Web site:

www.lsuagcenter.com

THE NEWSLETTER OF THE ST. TAMMANY PARISH MASTER GARDENERS ASSOCIATION

VOLUME 14, ISSUE 2

February, 2011



Inscribed Bricks Awarded for 50 Hours of Service

Forty-two members received a beautifully inscribed brick at the monthly meeting. These members volunteered at least 50 hours during 2010. This is 30 hours over the minimum requirement for established MGs and 10 over the minimum for new MGs. The entire association volunteered a grand total of 5702 hours! If you earned a brick, congratulations to you! If you didn't earn one this time, make it a goal for 2011.

The care and feeding of bricks

If you are the proud owner of a new brick, this information is for you.

The manufacturer recommends that you seal the bricks with a water sealer a few months after the installation and later once a year.

This is the way to keep the bricks and engravings beautiful for a long time.



President's Message



Welcome to February (and where did January go so fast?). February means Valentine's Day and roses to most of the world, but in Louisiana, it's Camellia Time featuring those beautiful rose lookalikes that will sparkle in red, pink and white blossoms for months to come.

And what better way to celebrate this profusion of color than to visit Slidell, the "Camellia City"? So, on February 16th not only are we having our general membership meeting in Slidell's City Council chambers, we've also been invited to tour Bob Stroud's beautiful camellia garden. The Plant Sale Committee will meet at 9:00 a.m. and our regular meeting will begin at 10:00 a.m., followed by the garden tour. I hope to see you at our first St. Tammany East get-together. Look for directions and maps on Pages 25-27 of this newsletter.

If you weren't able to attend our January membership meeting and would like to help with one of the Project Committees, just contact the committee chairperson and jump right in! These committees include the Slidell Herb Garden, the Otis House Butterfly Garden, the SMH Rehab Garden, Rooting the Future: MG's Partner with STPSB Schools and the Butterfly Garden at the Lacombe Wildlife Refuge. Names and emails of each chairperson are listed in the Directory of this GardenGoer, page 31.

I want to thank those members who volunteered to be mentors for 2011. Pam has included their names and contact information in this newsletter for everyone to use. If you have questions, please don't hesitate to ask.

The class of 2010 has organized a dynamite Spring Seminar entitled "Incredible Edibles" which will be held at the Greater Covington Center on Friday, February 11, from 9:00 a.m. until 3:00 p.m. Rusty has recruited a list of outstanding speakers including Dan Gill. According to chairman, Ty Guidroz, the topics include edible landscaping, spring vegetable gardening, roses, azaleas, and lawns. That's about as diverse as you can get! And of course there will be the ever-informative table-top clinics.

Penelope Gilles has graciously agreed to coordinate MG volunteers to work in the AgCenter office. With all of the AgCenter budget cuts and the relocation of JB Anders to Jefferson Parish, Mary Beth and Rusty could use some extra hands at times. When we originally started the MG class, one of the things we agreed to do was to help answer the phones. This doesn't mean you have to know all of the answers on the spot (even Rusty has to look up something once in a while). Just take the caller's number, do a little research on the internet or look in the file room for the information, and call the person back. And while you're waiting for that next interesting call, Mary Beth may ask you to do a little filing, count chickens or organize a binder. I am amazed at all of the hats Rusty wears and I don't mind putting one on for a few hours to help him out. So, when you get an email from Penelope asking you for some assistance at the AgCenter office, please try to help out. You never know what you might learn!

Julie Deus
jdcalla@aol.com

Pruning Properly

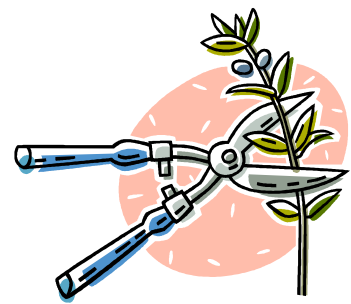
By

Rusty Batty

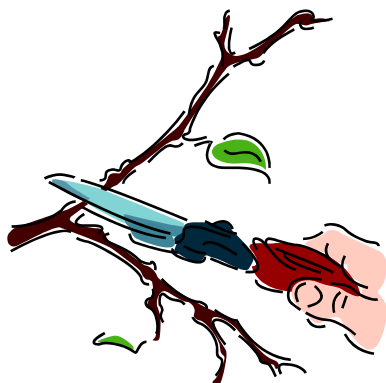
Plenty of people are preparing to prune plants promptly, perhaps not properly. That's a pack of p's, huh? But the fact remains, proper pruning is a skill/ art and more often neglected by most gardeners. On the other hand, making the right cuts at the right time can keep your plants growing uniform and healthy.

Prune according to these 4 D's. Pruning is done to remove dead, diseased, dying or decaying wood. You can also prune to manage plant size or to rejuvenate old plants.

When pruning, first remove weak and spindly wood inside or near the ground. Next reduce the height of the plant to the desired level by making cuts at various levels, always keeping in mind the natural form of the plant. One rule for cutting cane-type plants is to remove one-third of the oldest and tallest canes near the ground each year. This will keep the height of the plant at a reasonable level.



Finally, no rules cover all pruning. The important consideration should be preserving the natural form of a particular species. The extent of annual pruning will depend on the plant. Some shrubs may require the removal of a considerable amount of wood each year, while others require little pruning. It is much better to



prune lightly each year rather than severally butcher a plant after several years' growth. Just remember to prune properly, punctually and practically. Then proudly proclaim...PERFECT!

Citrus & Horseradish ???

I just came in from collecting my neighbors kumquats! They are in San Antonio and said I could pick them. Wow! What an invitation. I was going to tell you all [ya'll] about the herb of the year 2011 ~ Horseradish, but I'll combine the two.



For the home gardener, horseradish is easy to cultivate. Allow plenty of space, since the plant boasts bright green leaves, 2 to 3 feet tall and at least that wide. The blooms will appear in 2 years as showy, white spikes. Both leaves and flowers are edible with a mild horseradish taste.

Horseradish grows best in cool weather. Fall is the main growth time and the best time to harvest the roots. The root can be left in the garden and dug up when needed or you can dig the whole plant up, keep the main root and put all the smaller roots back into the soil to start new plants. Look in your grocery store or farmers market for long, thick, brown-skinned roots with gnarly knobs about 6 - 8 inches long. They should be firm, not rubbery. Shave some for a recipe and stick the rest in the ground to start a new plant.

Horseradish is a powerful circulatory stimulant with antibiotic properties due to the mustard oil it contains. It is effective for lung and urinary tract infections. Shave some horseradish, ginger root, a pinch of cayenne into a cup of hot water with the juice of a lemon, add honey or B grade maple syrup. There is nothing better for a cold or sinus infection.

Horseradish is most commonly used with steak. Try a simple butter or yogurt with mashed horseradish and some fresh herbs. This is great on rolls, veggies, potatoes, grilled fish, chicken or lamb. Horseradish with fruit? Combine some grated root with any jam to add a spicy kick. It's great with fruit and citrus. Instead of honey mustard for your pretzels, think Kumquat Marmalade and Horseradish. Like a pepper jelly, this goes great over cheese, on grilled chicken and duck or infused into a vinaigrette!

Now that I dug up my horseradish, and picked my kumquats, I need to go make my jam. I have some left-over champagne so I will add it to my recipe instead of water. Cheers to our 2011 gardens!

Kumquat marmalade: 1 lb 2 oz. [4 cups] kumquats, zest and juice of 1 lemon, 1 lb. 2 oz. [2 ¾ cup] sugar, 2 cups liquid.

***Thinly slice kumquats. Remove seeds, tie seeds in muslin.**

***Place ingredients, except sugar in a stainless pot and boil about 15 minutes until tender.**

***Remove seeds, add sugar.**

***Bring to boil about 5 min about 220*. Ladle into sterile jars.**

Linda Franzo linda@passionateplatter.com

Master Gardener Meeting Minutes
January 19, 2010

Julie Deus called the meeting to order at 10:05 AM. A quorum was present with 79 members attending. Julie led the Pledge of Allegiance and Rusty Batty led the prayer.

Judy Wood welcomed the group and thanked David Lynd, Pam Peltier and Kappy Goodwin for the new window shades. Comment box suggestions are welcome for meeting improvements. Meetings will include two “mini talks” – Hot Topics and Hints.

Linda Deslatte presented the Hot Topic, “Before, During and After the Freeze” and Don Lefevre Offered Helpful Hints on seed starting/watering and making plant labels from soda cans.

Gerard Ballanco presented “Vegetable Gardening: Delicious Fun” which was a very informative, motivational and entertaining look at his home vegetable garden. (This program counts as one hour continuing education credit)

10:50 – 11:00 AM Break

Julie called the meeting back to order at 11:05 AM.

Rusty gave an update on the budget situation being less drastic than previously reported. The revision of the 2008 Plant Retail Locator List is in progress (Bob Beter working on the project) and information on retailers (name, location and types of plants) is needed for the new list.

The minutes from the December 15, 2010 meeting, as circulated, were approved.

Julie thanked the Hospitality Committee for the Christmas Party and stated the Board Meetings would be open to all MG’s and would be held the fourth Thursday of the month, beginning January 27 at 5 PM at the Louisiana Heart Hospital, 1st Floor Classroom. Anyone with agenda items were asked to e-mail Julie.

The February 15 meeting will be held at the Slidell City Council Chambers on Second Street, 3rd Floor. A map and directions will be published in the Gardengoer. After the meeting, MG’s are invited to Bob Stroud’s camellia garden for a tour. There will be no Hot Topic or Garden Hints at the next meeting. The March meeting will be held at the Armory.

Julie discussed upcoming events: Spring Vegetable Workshop, February 1 at the Hammond Research Center; MG Spring Seminar, February 11 at Greater Covington Center; Gerard Ballanco’s library seminars – February 16, 3 PM Folsom; February 16, 6 PM Mandeville; and February 19, 10:30 AM Slidell. Also, Saturday, February 12, US Wildlife Refuge in Lacombe – Camellia Open House from 9 AM – 4 PM.

Jay Rose presented the Treasurer’s Report and stated the Finance Committee would meet after the regular meeting.

The Treasurer’s Report, as previously circulated, was approved.

Honors Committee chair, Sandy Arnoult, announced that MG’s with over 50 hours could sign for and pick up their bricks from Judy Wood.

Hospitality Committee chair, Mary Ann Brannan stated refreshments would continue to be provided for the MG meetings and that each year, there would be an ongoing search for a suitable Christmas party location.

AJ reported that the Plant Sale is proceeding on schedule and that volunteers are welcome and needed.

Ty Guidroz reported that volunteers are needed for the Spring Gardening Seminar, “Incredibles and Edibles”, February 11, 9-3 at the Covington Center. Speakers will be Pat Newman, Peggy Martin, Ron Strahan, Kiki Fontenot and Dan Gill. Table top clinics will also be offered.

Christy Paulsell reported on the School’s Project and asked for volunteers to serve as a point of contact for each school. There is a “letter of introduction” and list of “do’s and don’ts” for volunteers partnering with the schools. A column will be in the Gardengoer to explain projects, i.e. Arbor Day in January and February. Christy asked for volunteers to contact her at her work e-mail:

J.Christine.Paulsell@stpsb.org.

Betty Rose reported on the Slidell Herb Garden which is submitting an application for the 2011 International Master Gardener Search for Excellence Award – 5 photos will be submitted.

There was no unfinished business.

Gerard Ballanco reported that the Tomato Focus Group needs at least 5 volunteers to participate in testing three to four common varieties and sources to pool knowledge and determine recommendations for the best to grow. Volunteers can contact Gerry to sign up.

A Mentoring Program to assist new MG’s with the transition into the organization and MG activities will be coordinated by Pam Keating under the Membership Committee. Regional liaisons (Mandeville, Covington, Slidell, etc.) will be needed to assist new MG’s with posting hours, projects, etc. Volunteers for regional mentors can contact Pam.

Julie asked for volunteers to assist Mary Beth and Rusty in the Ag Center Office. Penelope Gilles will be the Ag Center Office Volunteer Coordinator and interested volunteers should contact Penelope.

Rod Downie reported that he would be conducting “Walk in the Woods” at the Northlake Nature Center – four seasonal events, three hour walks, usually on Saturdays. These events qualify for continuing education hours. Anyone interested in attending can check the Northlake Nature Center website for details.

Door prizes were won by Pete Pericone and Jay Rose.

Nancy Berulis announced the Slidell Free Tree Seedling drive-thru this Saturday in Slidell.

Jay Rose asked that any committee chairs who have reimbursement requests submit them to him.

The meeting was adjourned at 12:00 Noon.

Respectfully submitted by:
Chere Currault
Secretary

January Meeting Recap



Pam Peltier, Kappy Goodwin and David Lynd made portable curtains to shield out the extra light so we can enjoy PowerPoint presentations. Thanks! The curtains make a big difference.

Linda Deslatte gave the first “Hot Topic” talk on protecting your plants from freezes. Using a plant container turned upside down over tender plants was one of her many tips.



Don Lefevre presented the first “Gardening Hints” presentation with the assistance of “Vanna” aka Julie Deus. One of his many hints is to use “pop cans” cut into strips as plant labels, then etch the name of the plant into the metal.



Dr. Jerry Ballanco gave a motivational talk on vegetable gardening. He presented a PowerPoint slideshow with many gardening tips and lots of humor sprinkled throughout. He encourages everyone to plant vegetables for food, family and beauty.

Chere Currault was hard at work on her first meeting as our new Secretary.



Inscribed bricks for volunteer service of 50 hours or more were distributed at the meeting. 42 members met the requirement to earn a brick.



**St. Tammany Parish
Exceptional Service
2010
Recipients**



Volunteer	Grad Year	Vol Hours
ARNOULT, SANDRA	2009	86.5
BALLANCO, GERARD	2009	72
BLAGA, BARBARA	2008	65.5
BORDELON, YVONNE	2000	184
BRANNAN, MARY	2003	118.5
BROWN, DONNA	2009	56
CLEVELAND, JEAN CLAIRE	2001	53
CROSS, JAMES	2009	93
DESLATTE, LINDA	2009	69.5
DEUS, JULIE	2009	130
DICHARRY, DONNA	2008	55
DOWNIE, ROD	1999	229
FONTENOT, ELIZABETH	2009	56
GAGLIANO, JOAN	2006	53
HEINSZ-BAILEY, AJ	2000	148
HOWLAND, DONNA	2009	61
JOHNSON, RUTHANNE	2009	80.25
KEATING, PAMELA	2006	113
KNIGHT, MITCHELL	2008	137
LAGRAIZE, BETTY	2001	110
LANDECHE, LESLIE	2003	75.5
LEFEVRE, DONALD	2008	53
LITZENBERGER, DEBORA	2008	227
LIVELY, JANEY	2008	54
LYNCH, CATHERINE	2006	72
MOORE, BARBARA	2008	51
MUNN, NANCIE	2009	63
PAULSELL, J. CHRISTINE	2009	62
PERICONE, PETE	2008	70.5
RAMIREZ, DIANNE	2003	74
ROSE, BETTY	2001	75
ROWE, LINDA	2009	63
SCHOEN, DEBI	2008	53
SCHWANDT, CAMILLE	2008	51
SCOTT, ART	2008	84.5
SPANO, GLENDA	2003	188.9
STEARNS, DENISE	2008	122.5
STELLINGWORTH,	2003	60
THIER, L. ANNETTE	2008	53.5
THIGPEN, FRANCES	2004	68
TWARDZIK, PAMELA	2009	60.5
WOOD, JUDITH	2007	202.5

Board Meeting Minutes January 27, 2011

The Board Meeting was called to order at 5:00 PM by Julie Deus, President. Other board members attending were Judy Wood, Chere Currault and Jay Rose.

Jay presented the current Treasurer's Report reflecting \$17,756.59 combined funds. The major expenditures were bricks, and printing for the plant sale. Jay suggested having two separate accounts instead of one account (Plant Show/MG Association) for simplicity in accounting. Jay will investigate "free checking" options and will report to the general membership at the February meeting.

Judy Wood reported that Nancy Berulis will co-chair the program committee. The February meeting will be in Slidell and all details will be published in the Gardengoer. At 10 AM, Mayor Drennan will welcome the MG's and the Mayor will provide refreshments. Bill Mauser, "Keep Slidell Beautiful" will address the group.

Judy discussed the proposed field trip to Mobile on March 24 for "Festival of Flowers". The fee would be \$20/per person and the MG Association would absorb the approximate \$1,155 balance. A motion was made to approve the field trip. Motion carried.

Paul Andres reported that John Besh is tentatively on the calendar for August 17 to speak to the MG's about the herb garden at LaProvence. The program is in the early planning stages, an estimated cost would be \$50 per person including food, drink, and gratuity. It is proposed to follow the regular meeting on August 17. As details are available, Paul will provide an update.

Christy Paulsell provided an update on the "Rooting Our Future" program of MG's partnering with the St. Tammany Schools. A December 29 planning meeting was held and two training sessions have been done. There will be an Arbor Day curriculum at Bayou Woods; a March 2 spring gardening training at Jefferson East; and an "E-training" on February 28. Christy is working with the Assistant Superintendent for MG's to work with the "Project Learning Tree" curriculum. More details will be published in the Gardengoer.

Judy Wood stated that Merle Mulkey is exploring a field trip to Shreveport (overnight trip where MG's would cover their own overnight accommodations expenses) to the American Federation of Roses Society. In addition, a LA House fall field trip is a possibility.

Julie addressed three suggestions from the Suggestion Box: (1) that e-mail is for MG business only (2) early planning should (and is) being done for field trips to avoid summer heat (3) anyone addressing the group (committee reports, etc) should sit in the front two rows so that they have access to the microphone and can be heard by the entire group.

Pam Keating presented the "Recommitment for MG's" which is the process for MG's not in good standing and deleted from the roster to become active. This will be presented to the general membership for approval at the February meeting.

Pam also stated the mentor program is on track and appears to be working.

Art Scott presented two new proposed projects (1) Advanced Master Gardeners, a pilot program proposed by Jerry Ballanco, initially focused on vegetable gardening, where MG's with special interest/expertise in a specific area would be trained by an Ag Center faculty member. The number of participants would be limited to 5-10 and those selected would be asked to present programs to garden groups, assist with Ag Center referred calls, etc. (2) Food Bank/Community Garden in Covington - using the Community Garden as a "teaching garden" for those who cultivate and benefit from the garden. Art will

contact Donna Howland and a presentation will be made to the general membership with a request for MG's interested in volunteering to become involved with this proposed project.

Julie reported that Ann Durel is planning a work day to clean up the Butterfly Garden at Otis House in Fairview Park, Madisonville. The house is under renovation and will not be ready until July, however the Butterfly Garden will be open in April for touring.

Julie stated the Scholarship Committee met and the 2011 application is unchanged and is being sent to high school counselors for students going into horticulture/agriculture studies. The committee will determine the number of scholarships based on the revenue from the Plant Sale. A sub-committee is being formed to contact colleges with Ag programs to solicit upper classmen going into agriculture/horticulture programs (specifically students from St. Tammany Parish).

Jay Rose asked for a budget from the Scholarship Committee.

Susie Andres reported on the Lacombe Butterfly Garden's work day planned for March. Susie and the committee will explore grant funding. Jay offered to provide a cost estimate for a sprinkler system for the 19x30 garden. Susie stated the "Friends" group would likely support some of the expenses.

Ty Guidroz stated the spring workshop has 98 registered and is on track. Media coverage is forthcoming and the number will exceed the break-even point. MG's who are registered will be asked to volunteer for distribution of food/snacks.

Julie stated the Slidell Memorial Rehab Garden wants to do an April plant sale and that the potted plants are doing well.

Betty Rose reported that the application/photos were submitted for the 2011 International MG Search for Excellence. Winners in any of the six categories would attend the fall conference in W. Virginia (a monetary award is given as well). Betty also stated that June Taffaro would chair the April Spring Herb Fest.

Julie stated that if any publicity was needed that Ann Gilbert is the publicity liaison and would handle such requests.

Barbara Moore requested that the 2011 Christmas Party date be changed to December 14, 2011. A motion was made to approve changing the date. Motion carried.

Barbara also stated that Karla Partridge offered to host a potluck lunch at her home to follow the Plant Swap on April 20th.

Julie stated that a pointer and extension cord would be purchased for use at future meetings.

Jay Rose submitted the Audit dated January 18, 2011 to be recorded/filed with the minutes.

The meeting was adjourned at 6:55 PM. Thirteen were in attendance.

Respectfully submitted by:

Chere Currault

Secretary

Membership Committee Report

The Membership Committee has submitted a simple re-certification program for Master Gardener's who did not meet the volunteer or education hours for the previous year. The Master Gardener must meet with the county agent, sign a re-certification paper, commit to 20 volunteer hours, 6 education hours, create/reactivate an account through the LSU AgCenter website for reporting hours, and pay yearly dues. This will be allowed one time only. The Board approved the program at the meeting on Thursday, January 27. The general membership will vote on this program at the meeting on February 16.

Pam Keating
Membership Chairman



Comments and Suggestions

The following three comments were received in the suggestion box on Wednesday, January 19.

1) **"Please announce that email is for MG information only. Not jokes or political stuff. Thanks"**

The information contained in the St. Tammany Parish Master Gardener Handbook is for use of the members of the Association when handling the business of the Association only.

2) **"Please have speakers come to the front of the room to speak. You have to strain your neck to see them, you can't hear them well or see them."**

At the meetings of STPMG the first two rows will be reserved for those MG's who are scheduled to speak or make reports at the meeting. If you are on the agenda for a meeting, please sit within the first two rows and come to the front when speaking.

3) **"If we are going on a Spring outing this year, plan early do we don't have to go in HOT weather like the last two years."** The Board has recommended the Spring Tour to the Festival of Flowers in Mobile on Thursday, March 24. See article on page 12.

Judy Wood, Vice President

Spring Tour – Thursday, March 24 Festival of Flowers Mobile, Alabama

The Board is recommending that the STPMG Spring Tour be to The Festival of Flowers in Mobile Alabama on Thursday, March 24, 2011. This is the 18th Annual Festival. This year's Festival features life-sized gardens, a butterfly house, seminars, Blooming Cuisine, displays and displays, a café for lunch, and retail of plants and garden related items. More detailed information is available at <http://www.festivalofflowers.com/>.

The bus will leave the AgCenter in Covington at 6:30 AM stopping at the Mall in Slidell at 7 AM to board MGs from east St. Tammany, arriving in Mobile at 9 AM for the opening of the Festival. The bus will leave the Festival at 2:30 returning to St. Tammany Parish.

The cost will be \$20 per member. This will include transportation, ticket to the Festival, and refreshments on the bus. Lunch will be on your own at the Garden Café located on the Festival Grounds. The STPMG will underwrite the remaining expenses.

The total cost of the Tour is \$1480 for the bus, \$9.50 admission to the festival per MG and refreshments on the bus. The bus can accommodate 55 passengers.

Final approval by the MG membership will be voted upon at the February 16 meeting.

Proposed Speaker Schedule for Thursday, March 24

10am—James T. Farmer, III - Landscape Architect, All Things Farmer
(Montgomery, AL) “Tablescapes: Fun and Fabulous!”

11am—Craig Roberts - Architect (Mobile, AL) - “History of Mobile Through Architecture”

12pm—Melanie Lobel - Floral Designer, Zimlich's Patio and Garden (Mobile, AL) “Container Gardening”

1pm— Chris Francis - Landscape Architect, Chris Francis Landscaping - “Tree Selection”

2pm— James T. Farmer, III - Landscape Architect, All Things Farmer
(Montgomery, AL) “Herban Gardening: Cooking, decorating, and gardening with Herbs”

Mentoring Program

At our January MG meeting, Julie Deus and Pam Keating implemented a mentoring program between established Master Gardeners and the new class. The program gives the new members a contact person to call for questions concerning Master Gardeners. Questions about the plant show, volunteer opportunities, education hours, reporting hours at the LSU website, what to wear at the plant show when the wind is blowing 50 miles an hour and the wind chill feels like 2 below can usually be answered by the veterans. And if they can't answer, the mentor can always say "Call Rusty or Mary Beth."

The mentors are divided into sections of the parish, but you can call anyone.

Folsom, Lee Road, Bush—

Pam Keating—892-4445, cell 335-2698—tvkpam@bellsouth.net

Covington, Madisonville--

Joan Gagliano—895-7827—joan70435@yahoo.com

Mandeville—

Lisann Cheaney—626-8452, cell 951-9855—lisannsc@gmail.com

Barbara Moore—674-2747, cell 264-6259—babsofil@gmail.com

Lacombe, Abita Springs—

Debora Litzenberger—882-7986, cell 290-3829—dklitz@charter.net

Slidell—

Nancy Berulis—643-8813, cell 504-914-6742—nberulis@bellsouth.net

Pearl River

Betty Rose—863-3418, cell 768-0119—bettyrose@charter.net

Thanks, Pam Keating
Membership Chairman

Rooting the Future: Master Gardeners partner with STPSB Schools

The official name of the Schools Project committee will be "Rooting the Future: Master Gardeners partner with STPSB Schools" and the purpose of the committee is to provide horticultural educational opportunities for our schools.

During a planning meeting on December 29, 2010, we discussed the many volunteer opportunities that could be offered to our schools BUT like the majestic live oak, we will plant our seeds and grow slowly.

The "Rooting the Future" committee would like to begin with these opportunities for the remainder of the 2010-2011 schools year:

We are piloting three educational opportunities this year:

***Arbor Day Lessons- Schools may request MG Lessons: January 24- February 4**

I have conducted MG Arbor Day Training session Friday January 21, 2011 to discuss potential topics and ideas for classroom activities for the various grade levels, all stored in a binder for your reference and to build upon.

***Spring Gardening Lessons- Schools may request MG Lessons: March 14- May 20**

(*NO Lessons during Week of April 11-15 because of LEAP testing*)

I will conduct an MG Gardening Training session Wednesday March 2, 2011 to discuss possible topics and projects for a spring garden based on the various grade levels.

Training will be held from 9:00-11:00 and the location is STPSB Jefferson East Building 227 N. Jefferson Street, Covington, LA 70433.



*Fall Gardening Lessons- dates to be determined at a later time.

In 2011 we would like to provide the parish public elementary schools with a Master Gardener Point of Contact to help coordinate the horticultural needs of that school (www.stpsb.org). If you are interested in being that POC for an area school please contact Christy Paulsell.

Feel free to contact me at any time.

Christy Paulsell-- MG 2009

J.Christine.Paulsell@stpsb.org

Advanced Master Gardener - - A Pilot Program

The Advanced Master Gardener committee is putting in motion a plan for Master Gardeners to deepen and expand their knowledge and experience in some areas of horticulture. All areas are open for consideration but the guiding principles are needs of the Ag Center and county agent. The mission of the Advanced Master Gardener (AMG) core is to extend the educational arm of the Ag Center to schools, garden groups, seminars, and demonstrations, talks to Master Gardeners and such as the farmer's market patrons, and consultants to community or school garden projects.

We envision a one to two day training period offered by knowledgeable Ag Center faculty, outside reading recommended by them, field trips to demonstrate the information and practices they recommend, and ongoing self education. This in depth training will be preceded by a meeting of interested MGs to review and refresh "the basics" of the topic. This will be done by Advanced Master Gardener candidates to act as review of materials and refresh presentation skills. It is always good to practice before an audience of friendly people.

The number of MGs attending the program must be limited. As this is a pilot program, it will be watched by all participants for strengths as well as areas that need improvement. It will be expanded or modified as feedback from faculty, county agents, participating AMGs, and the community comes in. Some other states have similar programs but this is designed to meet our needs and that of the St Tammany community.

Rusty says that vegetable gardening is his most urgent need; so, that is this year's proposed topic. Art and Jerry met with Dr Kathryn Fontenot and Rusty and discussed goals, benefits to the individual MGs and the Ag Center, suggested topics, faculty, criteria for attendance, and funding. It was a very productive meeting. Now those ideas need to be presented to the state-wide MG program for approval.

Assuming that passes muster, Dr Fontenot must meet with the specialists she selects to teach the various components and develop a curriculum. While that is going on, the committee will solicit MG for the program and organize a "freshen up on the basics" program.

When will this happen? As soon as we get the green light from MG administration. It is a magnificent opportunity to learn about why we do what we do and maybe learn to do it better. It's a great chance to expose the people in our community to quality, personalized, well schooled opinion on matters we all care about. It's about learning, sharing, and helping. Stay tuned.

Jerry Ballanco; gballanco@bellsouth.net; contact person

Growing Eggplant, Tomatoes and Peppers from Seed

A Presentation by
Dr. Gerard Ballanco



Dr. Ballanco, a Master Gardener, held a PowerPoint presentation at the Slidell Library on January 15 to a room of 30 people. This talk was also given at two other library branch locations. He shared his abundant knowledge about growing tomatoes, peppers and eggplant from seed indoors. Several great ideas for growing seeds were given: testing your seeds to determine if they are viable, using a mister to water seeds, keeping the grow lights 2-3" from the sprouts for 15 hours a day, running a fan strengthens the stalks and repotting as the roots start growing around the bottom of the container. Jerry will have another lecture series at the branch libraries this month. See page 17.

**St. Tammany Parish Library Announces
Growing Spring Vegetables
With Dr. Gerard Ballanco**

The St. Tammany Parish Library and Recreation District #1 of St. Tammany Parish, are co-sponsoring *Growing Spring Vegetables* by Dr. Ballanco. Do not miss this unique opportunity to prepare for a satisfying spring harvest. For your convenience, this helpful program will be held at three different libraries on the following dates and times.

Growing Spring Vegetables Program

Branch Name	Day	Date	Time
Folsom	Wednesday	February 16, 2011	3:00 to 4:00 PM
Causeway	Wednesday	February 16, 2011	6:30 – 7:30 PM
Slidell	Saturday	February 19, 2011	10:30 – 11:30 AM

Dr. Gerard Ballanco is a retired pediatrician from New Orleans who is now a Master Gardener living in Folsom. He is graciously sharing his knowledge and experience with the community by presenting this program.

The event is free and open to the public, and registration is required. Seating space is limited to adults. Please stop by the branches listed below, or call to register for the program.

Library	Location	Phone
Causeway	3457 Highway 190	626-9779
Folsom	82393 Rail- road Ave	796-9728
Slidell	555 Robert Blvd	646-6470



INCREDIBLES AND EDIBLES

Growing and Eating Your Own

St. Tammany Parish Master Gardeners

Invite you to attend a seminar
Friday, February 11, 2011
9:00am to 3:00
(Check-in begins at 8:00am)

Greater Covington Center
Bogue Falaya Room, 317 N. Jefferson Ave, Covington, LA

Topics will include:
Roses...Something Old, Something New
Azaleas...Selection, Care & Maintenance
Planning and Preparing for Spring Vegetable Gardening
Southern Lawns vs. Weeds Battle
Edible Landscaping

Table clinics with various topics of interest for the edible and ornamental gardener

Registration Fee of \$20 per person – Lunch Included (Space is limited).

Make checks payable to **STPMG**: Mail to: **STPMG Incredibles and Edibles Seminar,**
c/o LSU AgCenter, P.O. Box 5438, Covington, LA 70434.
For more info call: LSU AgCenter at 985-875-2635.

NAME: _____

PHONE: _____ E-Mail address for confirmation _____

Additional Attendees: _____

Number Attending: _____ Amount enclosed (\$20/person, nonrefundable): _____



Camellia Garden Stroll



1:00 – 4:00 p.m.

Sunday
February 20, 2011



Hammond Research Station
21549 Old Covington Hwy. (Hwy. 1067)
(Off Hwy. 190 next to Lynhaven)

Free Admission

Stroll through a collection of over 500 Camellia japonicas
and sasanquas planted from the late 1930's
to the early 1950's.

Also Camellia Plant Sale

Event co-sponsored by LSU AgCenter
and Tangipahoa Parish Master Gardeners Association

Membership and participation in activities and events are open to all citizens without regard
to race, color, national origin, gender, religion, age, veteran status, or disability.
If you have a disability that requires special accommodation for your participation in this event,
please contact Sandra Benjamin at 985-748-9381 by February 2, 2011.

A State Partner in the Cooperative Extension System

The Louisiana Cooperative Extension Service provides equal opportunities in programs and employment. Louisiana State University and A. & M. College, Louisiana Parish Governing Bodies, Southern University, and United States Department of Agriculture cooperating.

BEEKEEPING CLASSES
USING "BEGINNING WITH BEES" 1846 PUB.

FEBRUARY & MARCH CLASSES
BEEKEEPING TERMINOLGY
EQUIPMENT REQUIRED
WHERE & HOW TO BUY BEES
SWARM COLLECTING
BIOLOGY

APRIL CLASSES
INDOOR CLASS THURSDAY NIGHT
PLUS HIVE OPENINGS ON A
SATURDAY IN TALISHEEK, LA

CLASSES START AT 7:00 END 9:00
3 MONTH CLASS \$10.00

A series of beekeeping classes is being offered to anyone interested in starting, managing and maintaining bees. The class is primarily for beginners wanting to know about beekeeping. Mr. Julian Laine will offer the classes at the LSU Ag Center office beginning on Thursday, February 17 at 7pm.

For more details contact Mr. Laine at
985-635-1440 or jr.buzz@hotmail.com

Have you signed up to help at the 2011 Plant Sale?

The annual **Northshore Garden Show and Plant Sale** will be held **Saturday, March 19 and Sunday, March 20, 2011**. Volunteer shifts both days are from 8 a.m. until noon and noon until 4 p.m. This is a great opportunity to earn a large portion of your required volunteer hours for 2011. It's also fun! There are many areas to volunteer. Volunteering for parking is a two for one hour reward. (That is, for every hour spent as a parking volunteer you may record two hours of volunteer service.) Our organization depends on this event for the majority of our yearly operating funds and to endow the Bobby Fletcher, Jr. Scholarship Fund. Your volunteer help is needed for this event to be a success. To sign up, please contact Pam Twardzik at ptwardzik@yahoo.com

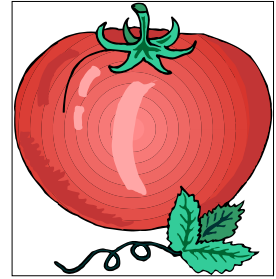


Scenes from the 2010 Northshore
Garden Show and Plant Sale





SHOW OFFS!!!



Master Gardeners, get those plants ready for the Plant Show!! Show off those gardening skills!! Get your veggies and herbs ready! Annuals and perennials are needed!! Get your seed packets ready!!

We need any and all plants for the Master Gardener Plant Booth. These plants can be brought to the Fairgrounds on Friday, March 18 as we set up the booth. Make sure you label each plant.

Thanks, Pam Keating MG Plant Booth Chairman

The Slidell Library Herb Committee News

Betty Rose at the Herb Gathering



On January 12, an Herb Gathering was held at the Slidell Library meeting room. Betty Rose gave an informative presentation on the curry plant. She discussed growing curry and its uses. Her assistant, Jay Rose, served a chicken curry dish, Chicken Korma, that was delicious. Betty gave everyone a handout with loads of information on curry.

Herb Gathering meetings - all are Wednesdays from 1-3 PM at the Slidell Library meeting room:

March 30	Donna Dicharry	Parsley
May 11	Debora Litzenberger	Rosemary
Aug. 10	Cecelia Drennan	Mint
Sept. 14	Patty McGinnis	Basil
Nov. 9	Deborah Turton	Dill

June Taffaro has graciously agreed to be the chairman of the Spring Herb Festival which will be held on Tuesday, April 12 on the grounds of the Slidell Library around the Demonstration Herb Garden. Set up starts at 2pm and the festival runs from 4-7 pm. If you would like to volunteer to help with this event, please contact June at 985-781-0891 or 985-710-2929 or email:

CPTJPT@yahoo.com



The Fall Herb Festival is scheduled for Tuesday, September 27.

Announcements

Spring Seminar

Hello Garden Enthusiasts,

It's that time of year again - time for the LSU AgCenter/ St Tammany Master Gardeners' Spring Seminar. It promises to be an exciting workshop covering topics ranging from ornamentals (azaleas & roses) to edible landscaping to battling weeds!! Our featured speakers will include Ron Strahan, Kiki Fontenot, and Dan Gill, as well as, Peggy Rose Martin and Pat Newman.

This all-day event will be held on Friday, February 11, 2011 in the Bogue Falaya Room at the Greater Covington Center. The cost is \$20.00 and includes lunch. Space is limited, so return the attached registration form on page as soon as possible. **DEADLINE IS FEBRUARY 4TH!! See page 18 for registration form.**

Thanks,

Kappy Goodwin
Registration Chairperson



Volunteers for Seminar

Members of the Class of 2010: If you are attending the Spring Seminar on February and would like to help out, email Ty Guidroz at tyguidroz@charter.net or give him a call at 985-285-3855 or. A few more hands would be a big help during the seminar.



Directories

The new 2011 membership directories are now ready for pick-up at the AgCenter office. The class of 2010 is included in the directory and all inactive members have been removed. Be sure to get your copy soon.



Fliers for Plant Show

The fliers are ready to distribute for the Spring Plant Show and Sale. Please pick-up a few to handout to your friends and at local stores. We need to spread the word on this event. The fliers are at the AgCenter for your convenience.

February 16 meeting in Slidell – Camellia Garden Tour

The February 16 meeting of SPTMG will be held in City Council Chambers of Slidell. Bob Stroud will speak about “Growing Camellias in Louisiana”. Following the meeting we will go to Bob Stroud’s home and tour his camellia gardens. The Plant Sale meeting will be at 9 AM; Bob Stroud’s presentation will begin at 10 AM with the business meeting to follow. There will be light refreshments following the meeting in the Mayor’s Conference Room. Then we will depart for Bob Stroud’s home.

Directions to Slidell City Hall (2055 Second Street, Slidell 70458)

At Exit 83 leave I-12 heading south, turning right onto US-11

Go 2.6 miles, crossing railroad overpass, crossing Gause Boulevard

At the Train Depot **Turn left onto Fremaux Avenue**

Go 1 block

Turn right onto Second Street

Pass the Post Office; **City Hall is the second block on the right side**

Parking is on the Street

City Council Chambers are located on the third floor of the north building (green).

Take the elevator to the Third floor.

Directions to Bob Stroud’s home (2 Oak Grove Way, Slidell 70458)

Leaving City Hall go **north on Second Street** to Fremaux

Turn right (east) onto Fremaux Avenue

Go 0.3 miles to Seventh Street

Turn left onto Seventh Street; Go 0.5 miles to Gause Boulevard

Turn right onto Gause Boulevard; Go 0.3 miles on Gause Boulevard to Robert Boulevard (LA 1091)

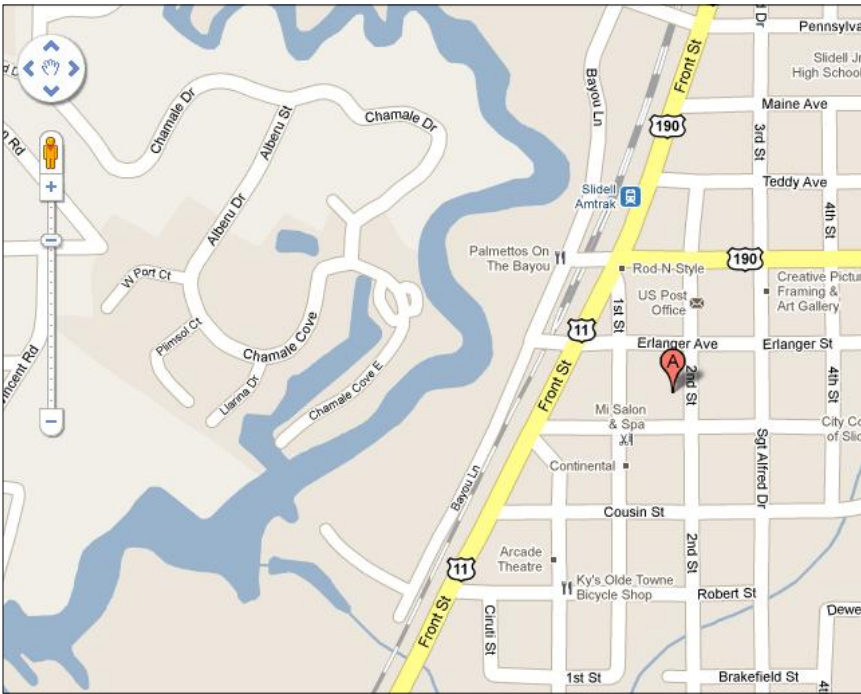
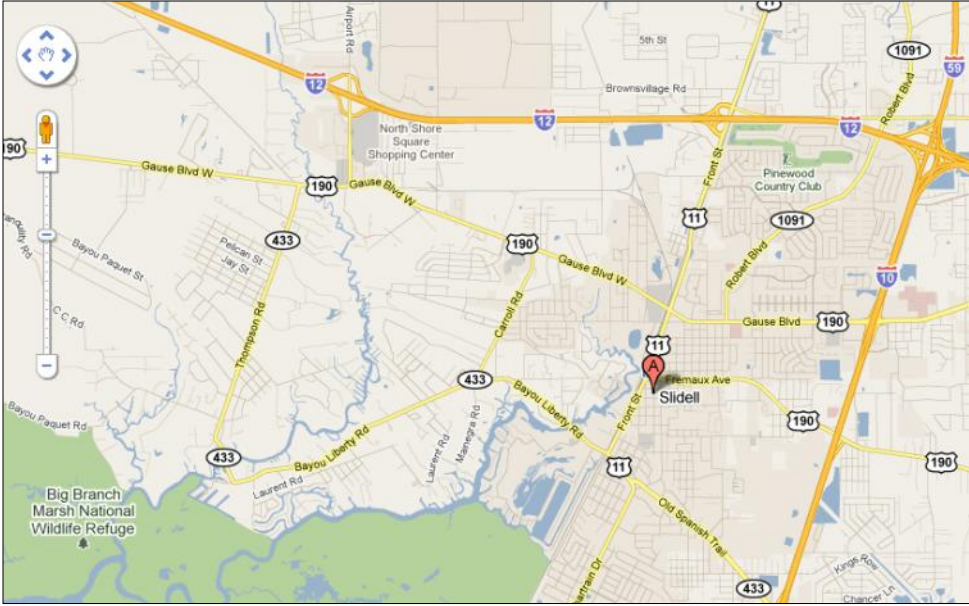
Turn left onto Robert Boulevard; Go 3.0 miles passing the Slidell Library (Herb Garden), crossing I-12

Turn left onto Oak Grove Way; Go 0.2 miles

Bob Stroud’s home is on the right

Maps are on the following 2 pages.

Directions to February Meeting Location
Slidell City Council Chambers, 3rd Floor
2055 Second Street, Slidell, LA



From Mandeville take the Slidell-Pearl River exit 83 off I-12. Bear to right and go straight following Hwy 11 (Front St.) You will be driving south parallel to railroad tracks. Turn left at the 6th red-light (Fremaux). Turn right 1 block. Go straight for 1 1/2 blocks. Building is only 3 story building on Second Street. Directly across street is a construction site with pilings. Take elevator to third floor. Council chambers is at end of hallway thru double doors. If you get lost call my cell 290-6130. Celia Drennan

Directions to Bob Stroud's Home: 2 Oak Grove Way, Slidell, LA 70458

Leaving City Hall go **north on Second Street** to Fremaux

Turn right (east) onto Fremaux Avenue

Go 0.3 miles to Seventh Street

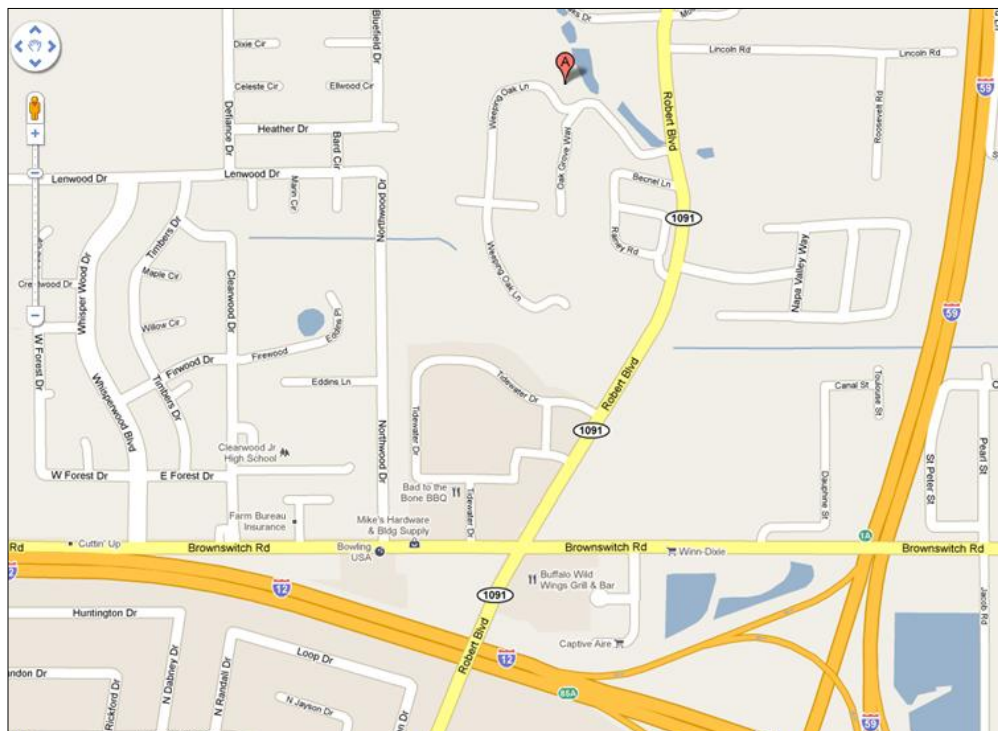
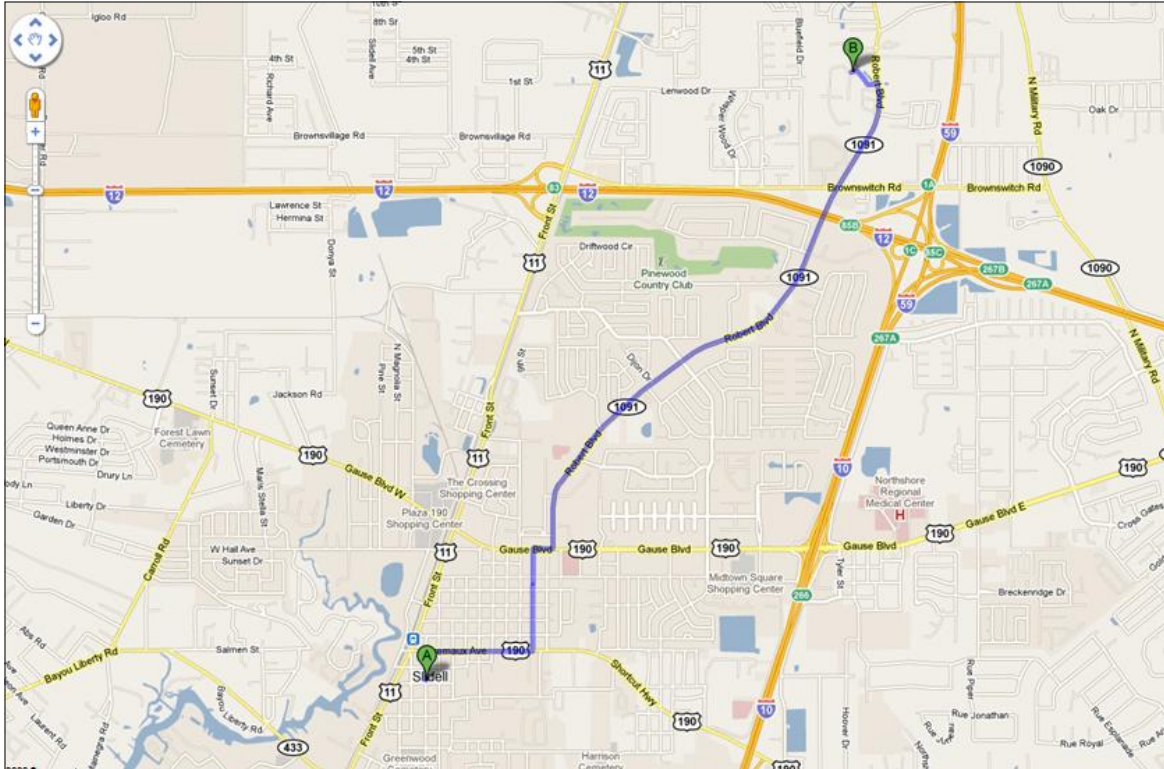
Turn left onto Seventh Street; Go 0.5 miles to Gause Boulevard

Turn right onto Gause Boulevard; Go 0.3 miles on Gause Boulevard to Robert Boulevard (LA 1091)

Turn left onto Robert Boulevard; Go 3.0 miles passing the Slidell Library (Herb Garden), crossing I-12

Turn left onto Oak Grove Way; Go 0.2 miles

Bob Stroud's home is on the right



St. Tammany Parish Master Gardeners 2011 Programs

Month	Speaker	Topic	Garden Hint	Garden Problem	Sharing Table	ED Hours
January 19 Covington	Jerry Ballanco	Vegetable Gardening: Delicious Fun	Yes	Yes	Yes	1
February 16 Slidell	Bob Stroud	Camellias and Tour of Camellia Gardens	No	No	No	
March 16 Covington	Georgeann Chaffee	Assessing the Mature Landscape	Yes	Yes	Yes	
March 24 Mobile, AL	Tour	Festival of Flowers				
April 20 Covington/Barn	No Speaker	Plant Swap	No	No	No	
May 18 Covington		Scholarship Award				
June 15 Covington		Vegetables				
July						
August						
September						
October						
November						
December	Christmas Party		No	No	No	



For any questions concerning MG Programs, contact:
 Judy Wood
jazzwood@charter.net

AGENDA
STPMG Membership Meeting
February 16, 2011

1. Call to order and report quorum present
2. Opening Ceremonies
3. Program: Growing Camellias in Louisiana presented by Bob Stroud

BREAK: 10 minutes

4. Comments by Rusty, County Agent and MG Advisor
5. Minutes from January meeting
6. Officer's reports
President: Julie Deus
Vice President: Judy Wood
Treasurer: Jay Rose
7. Committee Reports
Scholarship Committee: Brenda Caston
Hospitality Committee: Mary Ann Brannan
8. Project Committee Reports
Plant Sale: A.J. Heinsz-Bailey
Spring Seminar: Ty Guidroz
School's Project: Christy Paulsell
Slidell Herb Garden: Betty Rose
Advanced Master Gardeners: Jerry Ballanco
9. Unfinished Business
10. New Business
Re-instatement of members: Pam Keating
Food Bank: Art Scott
Proposed Equipment purchase
11. Door Prize
12. Announcements
Committee Co-Chairs: Julie Deus
13. Adjourn

Calendar of Events

February, 2011	
11	<i>INCREDIBLES AND EDIBLES, Growing and Eating Your Own.</i> Spring seminar put on by the Class of 2010. 9-3, check-in begins at 8. Greater Covington Center, Bogue Falaya Room, 317 N. Jefferson Ave, Covington, LA. Registration fee of \$20, lunch included. Call 985-975-2635. DEADLINE TO REGISTER IS FEB. 4. See pg 18.
12	<i>Trees, Plant to Preserve our Wetlands.</i> Tree planting. Bring life jacket, warm clothing, gloves, boots, sharp shooter shovel, first aid kit. Lunch, water and restroom facility for volunteers provided. For more info contact Samantha Goodwin at 985-778-7790 or keepmadisonvillebeautiful@gmail.com .
12	Bayou Gardens Open House at Southeast LA Nat'l Wildlife Refuge, 61389 Hwy 434, Lacombe. Come see the camellias in bloom. The NO Camellia Society will be there to answer your camellia questions. Guided garden tours throughout the day and also every Sat. through April at 10:30 am. For more info 882-2000.
16	9:00 a.m. Plant Show and Sale meeting in the Slidell City Council Chambers. See info below.
16	10:00 a.m. Monthly meeting at the Slidell City Council Chambers. Speaker: Bob Stroud, <i>Camellias</i> . A tour of Bob's garden follows the meeting. Please consider car pooling as parking in Bob's neighborhood is limited. See pages 25-27 for more info and maps to the Chamber offices and Bob Stroud's home.
16 & 19	Dr. Gerard Ballanco @ St. Tammany Parish Libraries. <i>Growing Vegetables from Seed.</i> See flier on page 17.
17	Beekeeping Classes, a series of classes Feb-April by Mr. Julian Lane begin at 7pm at the LSU AgCenter office. See flier on page 20 for more info.
24	5pm Board meeting at the Louisiana Heart Hospital in Lacombe, Hwy 434 @ I-12. First floor classroom.
March, 2011	
16	9 a.m. Spring Plant Sale committee meeting at the National Guard Bldg.
16	10:00 a.m. Monthly meeting at the National Guard Bldg. Speaker: Georgeann Chaffee, <i>Assessing the Mature Landscape</i> .
19-20	Spring Plant Show and Sale, Fairgrounds See pages 21 & 22.
30	Herb Gathering at the Slidell Library meeting room. 1-3 pm. Donna Dicharry will give a presentation on parsley. See page 23.
April, 2011	
12	Spring Herb Festival at the Slidell Library on Robert Rd. Setup starts at 2 pm. The Festival runs from 4-7 pm. Contact Betty Rose if you would like to volunteer. bettyrose@charter.net . See page 23.
20	10:00 a.m. Plant Swap at the Fairgrounds barn.

STPMG Directory

PRESIDENT:

Julie Deus
674-6742 jdcalla@aol.com

VICE PRESIDENT:

Judy Wood
882-5353 jazzwood@charter.net

TREASURER:

Jay Rose
863-3418 jayrose@charter.net

SECRETARY:

Chere Currault
796-5038 ccurrault@att.net

COORDINATOR:

Rusty Batty
875-2635 rbatty@agcenter.lsu.edu

LSU AGCENTER OFFICE:

Mary Beth Kaizer
875-2635 MKaizer@agcenter.lsu.edu

WEB ADMISTRATOR:

Sandy Arnoult
882-3344 sarnoult@bellsouth.net

**LSU AGCENTER OFFICE
VOLUNTEER COORDINATOR:**

Penelope Giles
845-0216 penelope@sewrepro.com

MEMBERSHIP CHAIRMAN:

Pam Keating
892-4445 tvkpam@bellsouth.net

NEWSLETTER:

Debora Litzenberger
882-7986 dklitz@charter.net

PROJECTS COMMITTEE:

Art Scott
796-5878 folsomart@bellsouth.net

PUBLICITY:

Ann Gilbert
796-0520 gilbertwriter@yahoo.com

HISTORICAL:

Glenda Spano, *Scrapbook*
845-0900 runmimirun@yahoo.com

SMH REHAB GARDEN:

Leslie Landeche
639-9963 rocknlou@bellsouth.net

SLIDELL HERB GARDEN:

Betty Rose
863-3418 bettyrose@charter.net

Linda Franzo
781-4372 Linda@passionateplatter.com

LACOMBE BUTTERFLY GARDEN:

Susie Andres
643-3310 sandres@bellsouth.net

OTIS HOUSE BUTTERFLY GARDEN:

Ann Durel
626-1656 adurel@bellsouth.net

**ROOTING THE FUTURE: MGs PART-
NER WITH STPSB SCHOOLS:**

Christy Paulsell
898-6483 j.christine.paulsell@stpsb.org

Notes from the Editor:

Spring is just around the corner! You can tell by the increased activity of Master Gardeners. We are ordering seeds, growing our own vegetables from seeds, making garden plans, and attending gardening seminars. Very soon we will get our "fix" of dirt, plants and sunshine!

Please show you support to the "new class" by attending the Spring Seminar on Feb. 11. The registration deadline is Feb. 4, so act quickly. Let's also show our support for members on the east side of the parish by attending the February MG meeting at the Slidell City Council Chambers. We get a special tour of Bob Stroud's camellia garden afterward. Consider carpooling to Bob's house as there is limited parking in his residential neighborhood.

If you are interested in planting a spring vegetable garden, be sure to attend Jerry Ballanco's gardening seminars at libraries around the parish. His seminars are chock-full of information presented in a very entertaining way.

You can earn volunteer hours by writing an article for the GARDENGOER. You can submit an article on your favorite garden topic or possibly on a topic you would like to learn more about.

To help you keep your New Year's resolution to post your volunteer hours on a regular basis, here is the link to post your hours.

http://www.lsuagcenter.com/en/lawn_garden/master_gardener/Reporting+Volunteer+Hours/

Debora Litzenberger
dklitz@charter.net



THE GARDENGOER

THE NEWSLETTER OF THE ST. TAMMANY MASTER GARDENERS ASSOCIATION

Cooperative Extension Service

St. Tammany Parish

1301 N. Florida Street

Covington, LA 70433

Phone: 985-875-2635 (Covington)

Fax: 985-875-2639

Website: [www.lsuagcenter.com/
mastergardener/](http://www.lsuagcenter.com/mastergardener/)