

# **Sugarcane Stem Borer Scouting Guide**

**Blake Wilson**

**LSU AgCenter Field Crops Entomologist**



# Stem Borers Attacking Sugarcane

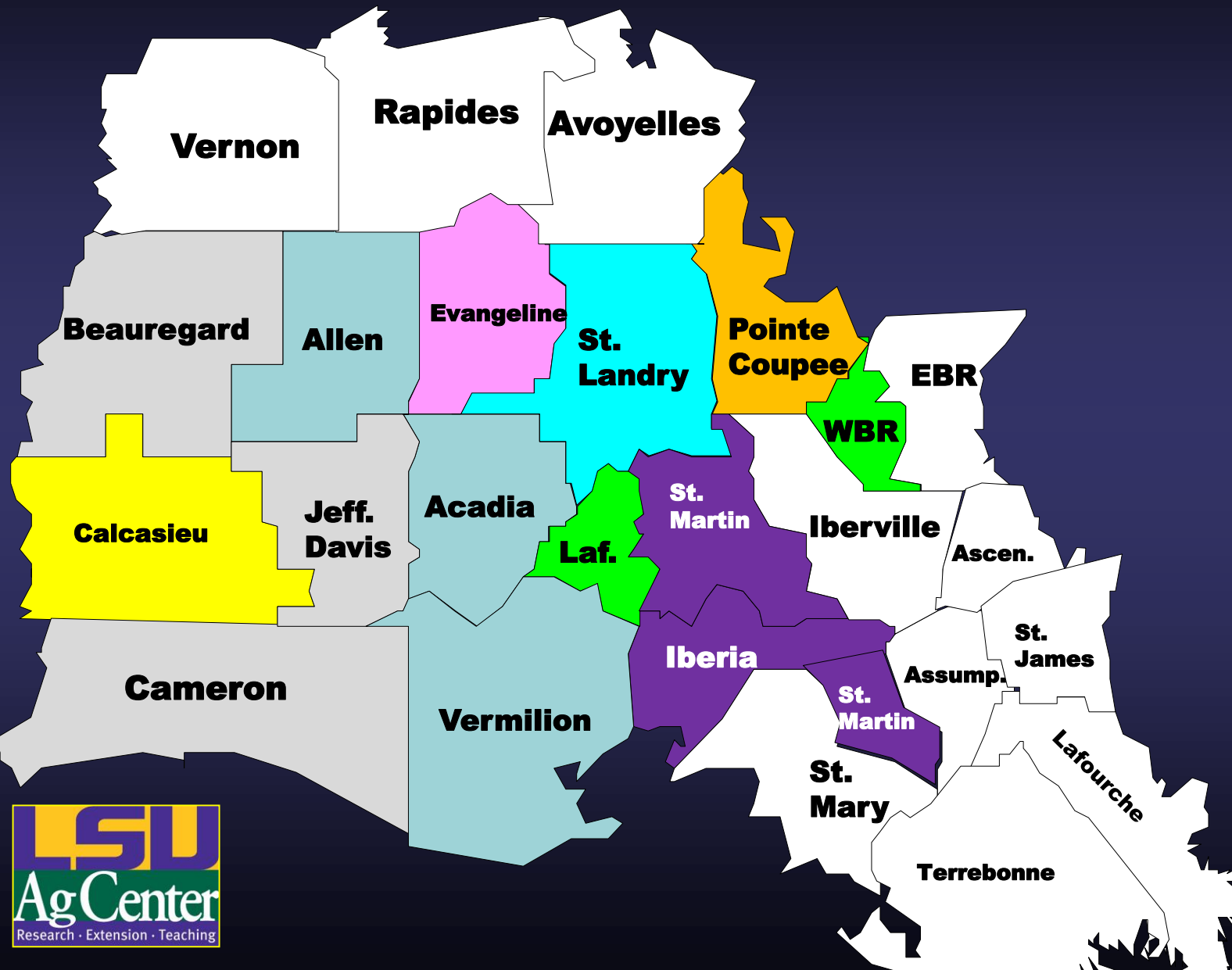
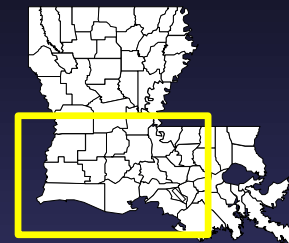
**Mexican Rice Borer (MRB)**  
*Eoreuma loftini*



**Sugarcane Borer (SCB)**  
*Diatraea saccharalis*



# MRB Range Expansion



# **Scouting for Borers**

**Pull back leaf sheaths of top three internodes and look for borer larvae**

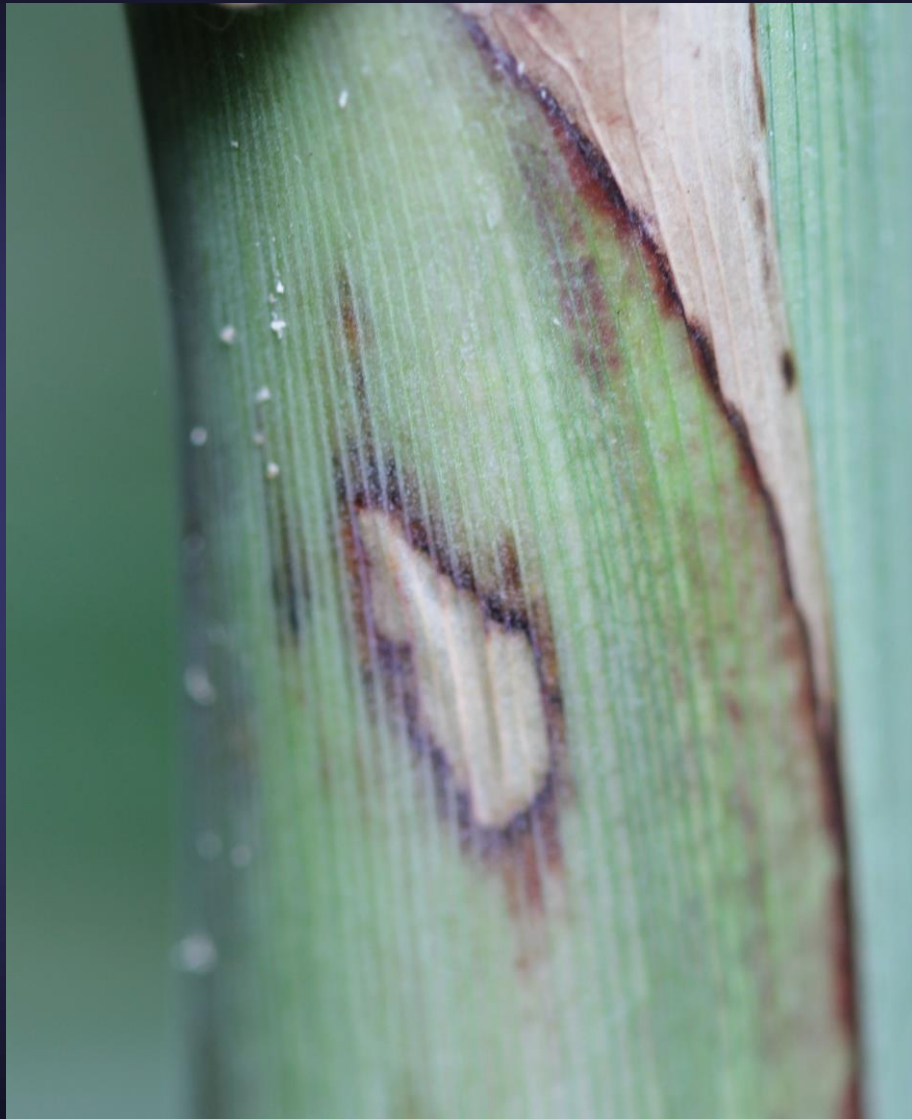
**Check 50-100 plants in each field, check in multiple places to cover whole fields**

**Scout all fields late May-early September**  
**Check weekly when possible,**  
**susceptible varieties more frequently**

**Hiring a certified crop consultant to scout all fields is recommended**



# Scouting for Borers



**External injury signs**



**SCB larva in sheath**

# Scouting for Borers

**MRB  $\neq$  SCB**

**Larvae often feed lower in the canopy**

**Eggs laid on dry leaves**

**Larvae move up**

**Enter into leaf tissues**

**More rapid stalk entry**

**Scouting research is ongoing**

**Drought stressed cane preferred by MRB**

# Scouting for Borers

## Mexican Rice Borer Injury



**MRB**



**SCB**



# Scouting for Borers

## Mexican Rice Borer Injury





# Scouting for Borers

## Mexican Rice Borer Injury



# **When to spray?**

**Economic threshold:** Spray if **>3-5% of stalks infested with larvae in leaf sheaths.**

**Early season infestations are more damaging to yields**

**Applications after September 1<sup>st</sup> may not be beneficial.**

# What to spray?

**Confirm<sup>®</sup> 2F**  
INSECTICIDE

**GROUP 15 INSECTICIDE**

**Diamond<sup>®</sup>**  
0.83 EC

	% BY WT.
ACTIVE INGREDIENT: Novalueon: 1-[3-chloro-4-[(1,1,2-trifluoro-2-trifluoro-methoxyethoxy)phenyl]-3-(2,6-difluorobenzoyl)urea*	9.3%
OTHER INGREDIENTS:	90.7%
TOTAL	100.0%

\*Contains 0.83 lbs. novalueon per gallon.  
EPA Reg. No. 66222-35

EPA Est. No. 37429-GA-001\*\*; 37429-GA-002\*\*  
Letter(s) in lot number correspond(s) to superscript in EPA Est. No.

**DuPont<sup>™</sup> Prevathon<sup>™</sup>**  
insect control  
with the active ingredient  
RYNAXYPYR<sup>®</sup>

 **Besiege<sup>®</sup>**

**All available products are effective.  
Prevathon is recommended for most  
situations.**



# Stem Borer IPM

## Variety Resistance

### Susceptible

- **HoCP 00-950**
- **HoCP 96-540**
- **Ho 05-961**
- **HoCP 04-838 (MRB)**
- **L 11-183**
- **L 12-201**

### Intermediate

- **HoCP 07-613**
- **L 01-283**
- **L 03-371**
- **HoCP 12-615**

### Resistant

- **L 01-299**
- **HoCP 85-845**
- **HoCP 04-838 (SCB)**

**Susceptible cultivars are often >5X more injured than resistant varieties when not protected.**

# Questions?

