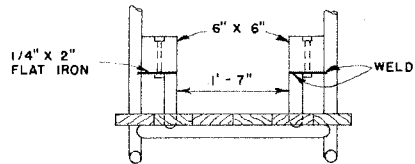


**NOTE:**

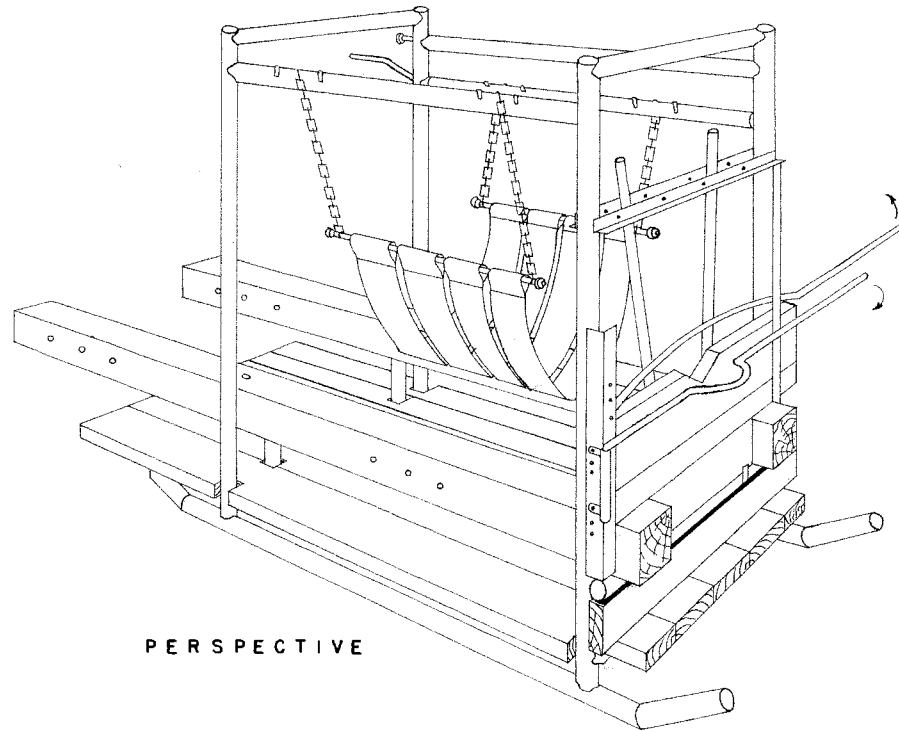
THE WELDED PIPE AND ANGLE IRON CONSTRUCTION MAKE THIS PIECE OF EQUIPMENT ADEQUATELY STRONG FOR HANDLING MOST FARM ANIMALS.

FOR LARGE ANIMALS SUCH AS 2,000 POUND BULLS INCREASE THE WIDTH OF FRAME TO 3'-6" AND THE HEIGHT TO 7'-0". USE 3" TO 4" PIPE FOR FRAME WORK.

THE OAK FLOOR CAN BE REMOVED TO MAKE LOADING EASIER WHEN THE EQUIPMENT IS TRANSPORTED BY TRUCK.



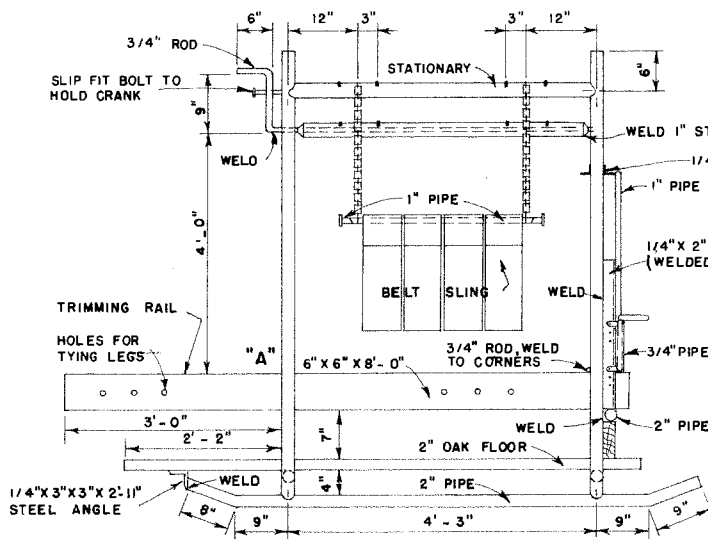
REAR SECTION AT "A"



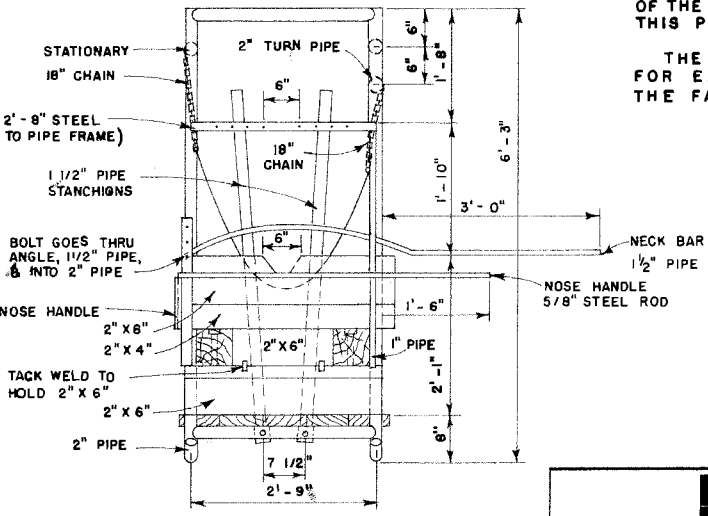
PERSPECTIVE

**USE OF CATTLE STOCK**

- 1 PLACE ANIMAL IN STOCK AND CLOSE STANCHION.
- 2 LOCK THE NOSE HANDLE AND NECK BAR.
- 3 PULL BELT SLING UNDER ANIMAL AND USE CRANK TO TAKE SOME WEIGHT OFF ANIMAL'S FEET. DO NOT RAISE ANIMAL'S FEET FROM FLOOR.
- 4 USING AN 8 FOOT LENGTH OF 1/2" ROPE, PLACE A LOOP AROUND THE PASTERN JOINT (BETWEEN ANKLE AND HOOF) OF ONE FOOT WITH ROPE EXTENDED TOWARD FRONT.
- 5 PULL FOOT BACK AND UP UNTIL IT RESTS INVERTED ON TRIMMING RAIL.
- 6 PULL ROPE THRU NEAREST HOLE, MAKE SEVERAL LOOPS AROUND RAIL AND PASTERN FOOT IS NOW SECURED, SOLE UP, READY TO TRIM.
- 7 WHEN TRIMMING REAR FEET OF STRUGGLING ANIMAL PLACE A LONG ROPE AROUND INSIDE OF LEG BEING WORKED, BRING BOTH ENDS OVER BACK AND PULL FORWARD. THIS TENSION WILL PREVENT STRUGGLING.



SIDE ELEVATION



FRONT

SOME OPERATORS PREFER TO USE ONLY TWO CANVAS BELTS FOR THE SLING INSTEAD OF THE FOUR AS SHOWN ON THIS PLAN.

THE PIPE SKIDS MAKE FOR EASY MOVING ABOUT THE FARM.

CATTLE STOCKS ARE IMPORTANT EQUIPMENT ON FARMS AND RANCHES WHERE VALUABLE BREEDING STOCK IS HANDLED. THE USE OF SUCH EQUIPMENT IN TRIMMING HOOF AND HORNS OR IN VACCINATING

OR TREATING CATTLE REDUCES THE CHANCES OF INJURY AND REQUIRES FEWER LABORERS IN PERFORMING SUCH OPERATIONS.

**LSU**  
Ag Center  
Research & Extension

---

**PORTABLE CATTLE STOCK**

ENGINEER	SCALE
DRAWN BY <b>TENN'54</b>	SHEET <b>1</b> OF <b>1</b>
TRACED BY <b>JLH</b>	DATE _____ NO. <b>5792</b>

## Disclaimer

This site makes available conceptual plans that can be helpful in developing building layouts and selecting equipment for various agricultural applications. These plans do not necessarily represent the most current technology or construction codes. They are not construction plans and do not replace the need for competent design assistance in developing safe, legal and well-functioning agricultural building system. The LSU Agriculture Center, the Mid-West Plan Service, the United States Department of Agriculture and none of the cooperating land-grant universities warranty these plans.