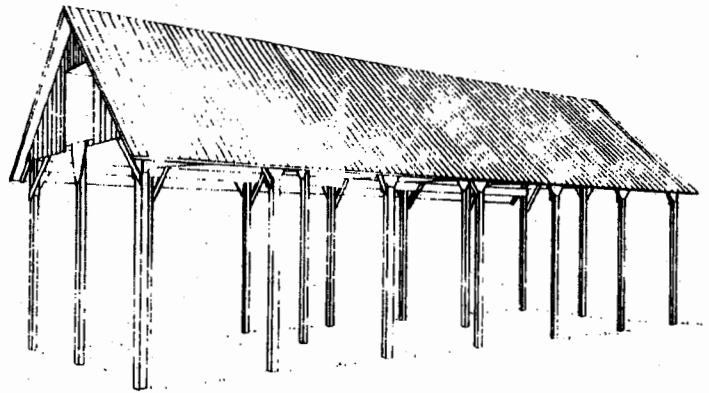
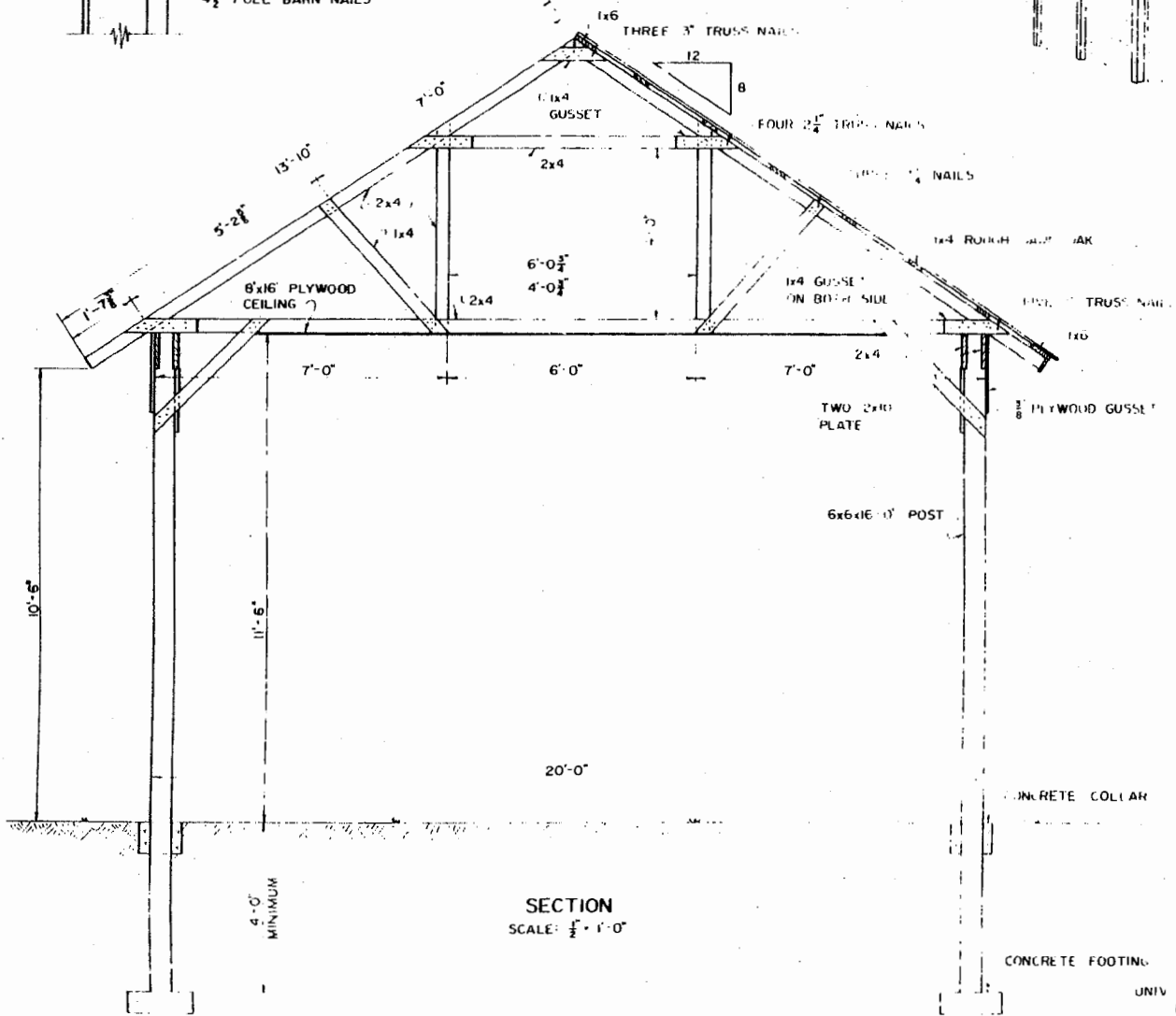


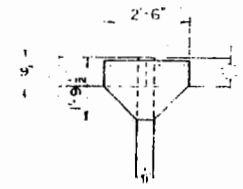
**GABLE END DETAIL**  
SCALE: 3/8" = 1'-0"



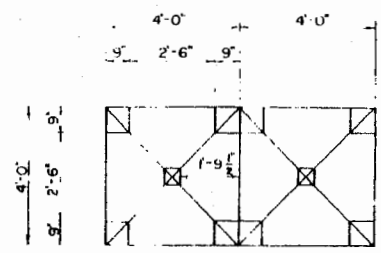
**PERSPECTIVE**  
DRYER NOT SHOWN



**SECTION**  
SCALE: 3/8" = 1'-0"



**GUSSET DETAIL**  
SCALE: 1/8" = 1'-0"



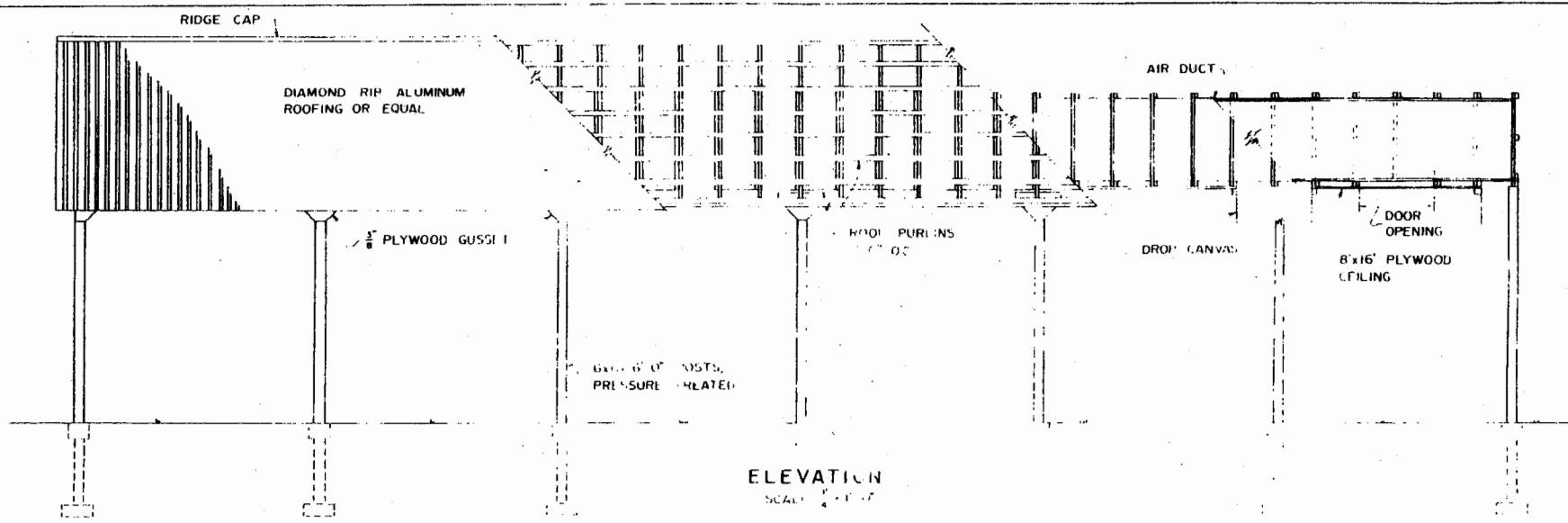
**GUSSET CUTTING DETAIL**  
SCALE: 3/8" = 1'-0"

NOTE: ALL PLYWOOD TO BE EXTERIOR TYPE

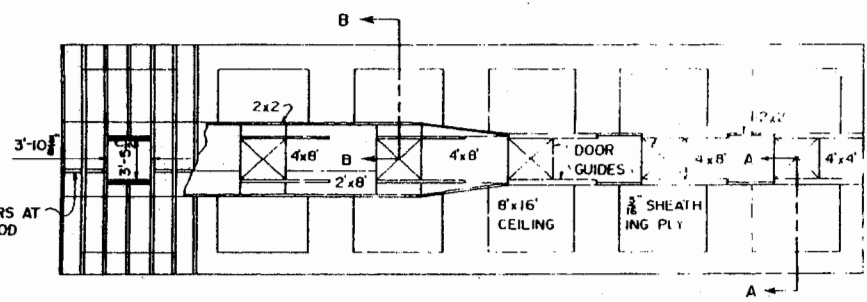


SHED FOR DRYING HAY

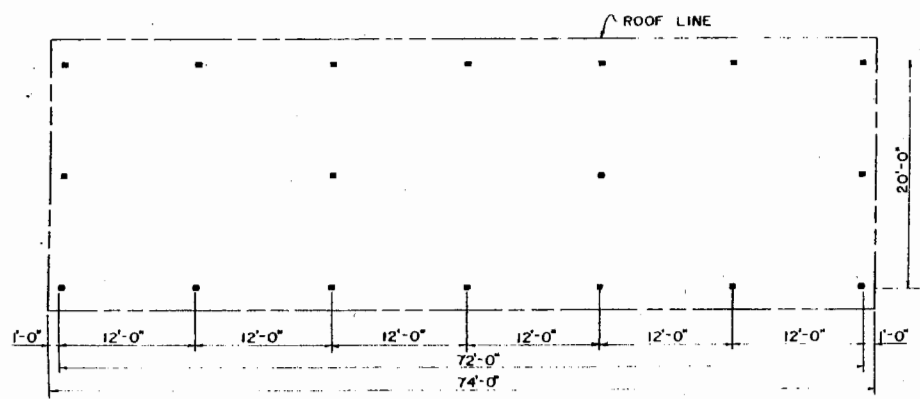
DEI. '69      6070      SHEET 1 OF 2



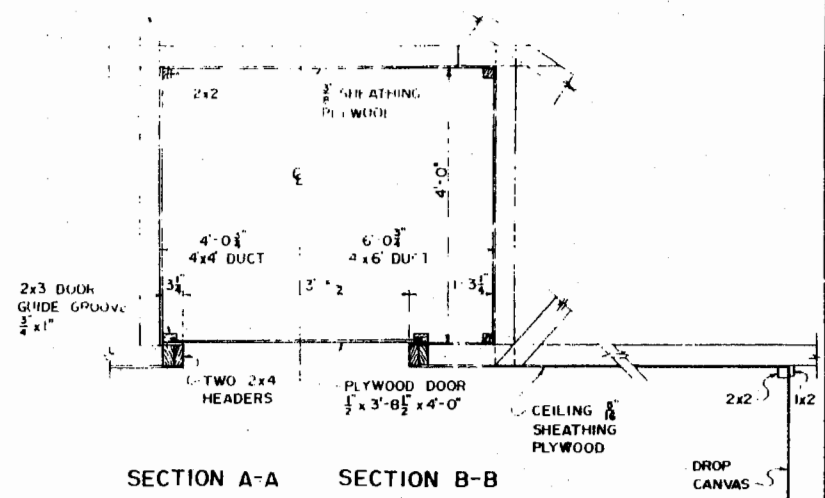
ELEVATION  
SCALE: 1/4" = 1'-0"




CEILING PANELS AND AIR DUCT - PLAN  
SCALE: 1/8" = 1'-0"



PLAN  
SCALE: 1/8" = 1'-0"



SECTION A-A SECTION B-B  
SCALE: 3/8" = 1'-0"

		
SHED FOR DRYING HAY		
DEL. '69	6070	SHEET 2 OF 2

## Disclaimer

This site makes available conceptual plans that can be helpful in developing building layouts and selecting equipment for various agricultural applications. These plans do not necessarily represent the most current technology or construction codes. They are not construction plans and do not replace the need for competent design assistance in developing safe, legal and well-functioning agricultural building system. The LSU Agriculture Center, the Mid-West Plan Service, the United States Department of Agriculture and none of the cooperating land-grant universities warranty these plans.