



Mike the Tiger is LSU's beloved mascot and lives on campus in a 15,000 square foot habitat.

### 10 Great Things about Living in Baton Rouge

1. **Louisiana State University** is the flagship university of Louisiana & has a real tiger that lives on the LSU campus!
2. Baton Rouge is the **Capital City** of the State of Louisiana.
3. **Southern cuisine** includes shrimp, crawfish, gumbo, jambalaya, etouffee, oysters, barbeque and much, much more.
4. Louisiana **French/Creole culture** is one-of-a-kind.
5. Baton Rouge is in **Plantation Country** with plantations dating back to the 1700s.
6. There are endless **museums and attractions** throughout the city. Baton Rouge is an extremely historic city!
7. **Weather** in Baton Rouge is warm and wonderful with flowers blooming year around.
8. Enjoy the outdoors! Louisiana is called Sportsman's Paradise, and Baton Rouge has a love for the outdoors.
9. Baton Rouge is the **Hollywood of the South**. Famous faces call Baton Rouge home and it is also a popular filming location for many blockbuster hits.
10. **Festivals galore:** Bayou Country Super Fest, Baton Rouge Blues Festival, FestForAll, Live After Five, Rock in Rowe and more.

## Degrees Offered in Human Ecology

- ◇ M.S. (thesis and non-thesis)
- ◇ Ph.D.

## Areas of Concentration in TAM

- ◇ Apparel Design
- ◇ Historical/Cultural Aspects of Textiles and Apparel
- ◇ Merchandising
- ◇ Textile Science

## Contact Us

- ◇ **Phone:** 225-578-2281
- ◇ **Email:** tamlsu@lsu.edu
- ◇ **Web:** www.tam.lsu.edu

## Apply Online

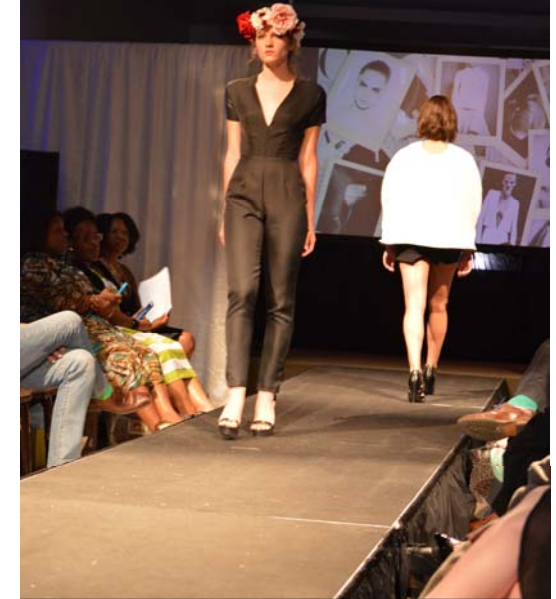
Through LSU Graduate School at [www.lsu.edu/gradapply](http://www.lsu.edu/gradapply)

## Funding Sources

- ◇ Research assistantships
- ◇ Teaching assistantships
- ◇ Scholarships/Fellowships
- ◇ Travel grants for professional presentations
- ◇ External funding sources

**LSU** TEXTILES, APPAREL DESIGN, AND MERCHANDISING  
125 Human Ecology Building  
Louisiana State University  
Baton Rouge, LA 70803

## Graduate Programs



Department of

TEXTILES,

APPAREL DESIGN,

AND MERCHANDISING





LSU Textile & Costume Museum Curator examining an early 1800s Louisiana dress from holdings.

## Facilities & Resources

- ◇ Computer lab
- ◇ Body scanning lab
- ◇ Historic and archeological textile and apparel research lab
- ◇ Textiles testing and processing lab
- ◇ Apparel production lab
- ◇ Hand woven structures lab
- ◇ Photography studio
- ◇ LSU Textile and Costume Museum



Two TAM graduate faculty examining results from the departmental 4-D body scanner.

## TAM Graduate Faculty

**Jenna Tedrick Kuttruff**, Professor  
 Department Head & Graduate Advisor  
 Ph.D., Ohio State University, 1988  
 Historic and socio-cultural significance of textiles and apparel, analysis; interpretation and conservation archaeological textile remains

**Chuanlan Liu**, Associate Professor  
 Ph.D., Auburn University, 2004

Consumer behavior; retail market research; branding and brand extension, social media marketing, entrepreneurship

**Delisia Matthews**, Assistant Professor  
 Ph.D., University of North Carolina at Greensboro, 2012. Consumer behavior; fashion consumer groups; branding

**Lisa McRoberts**, Assistant Professor  
 Ph.D., Florida State University, 2008  
 Aesthetic and functional design research on posture, fit, body shape analysis; product development; creativity; couture techniques; sustainability

**Ioan Negulescu**, Professor  
 Ph.D., Technical University, 1973  
 Textile science; chemistry of natural fibers and fiber-forming polymers; physical and chemical characterization of textiles

**Laurel Romeo**, Assistant Professor  
 Ph.D., Iowa State University, 2013  
 Technology in apparel product development and manufacturing; technology in teaching and learning; 3D garment design; 3D/4D body scanning; apparel fit and body shape; apparel and niche markets; updating anthropometric data of US population

**Casey Stannard**, Assistant Professor  
 Ph.D., Oregon State University, 2014  
 Role of traditional textile handcrafts in contemporary society; sustainable aspects of apparel design; creative scholarship incorporating fiber art techniques, theory based design, and 3D design technology



Faculty member lecturing on historic costumes used in the film industry exhibited at a local museum.

## Graduate Courses

- ◇ Creativity in product development
- ◇ Social-psychological theories of dress, appearance, and fashion
- ◇ Comparative studies in dress and culture
- ◇ Apparel merchandising and global expansion
- ◇ Consumer behavior in the apparel merchandising environment
- ◇ Introduction to research in textiles, apparel design, and merchandising
- ◇ Seminar: textiles, apparel design, and merchandising
- ◇ Microscopy of fibers and polymers
- ◇ Modern fiber science and technology
- ◇ Thermal Characterization of fibers and polymers
- ◇ Advanced individual field experience in textiles, apparel design, and merchandising
- ◇ Reading and conference

LSU IS AN EQUAL OPPORTUNITY/ACCESS UNIVERSITY