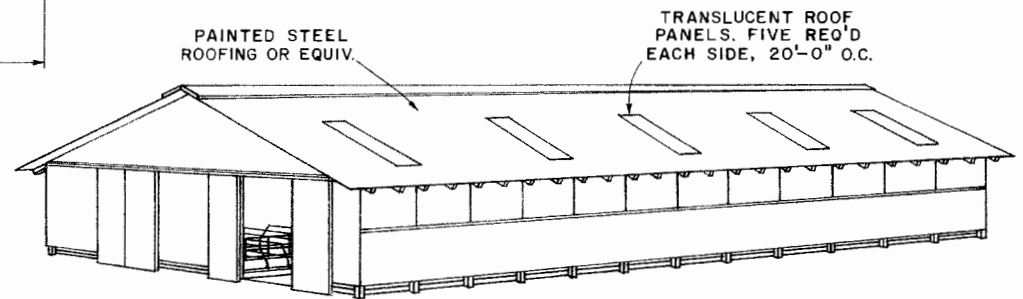


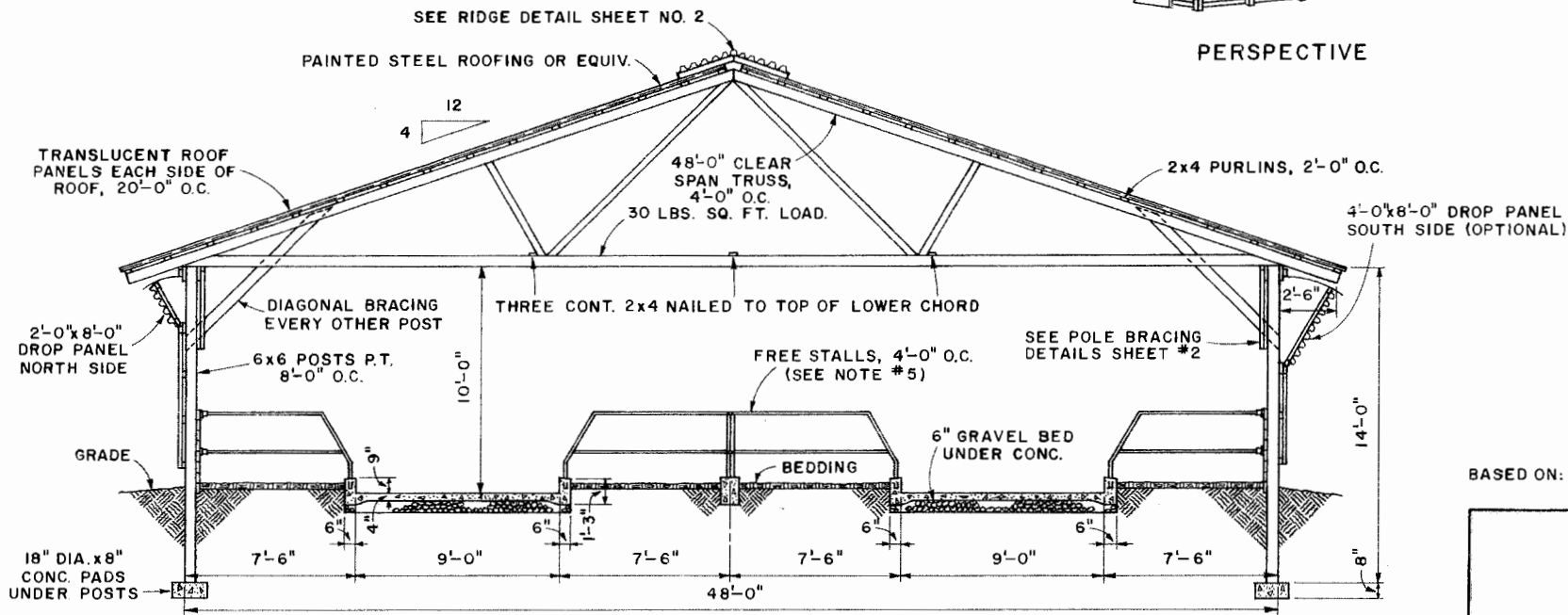
PLAN  
SCALE:  $\frac{3}{32}'' = 1'-0''$   
12'-0" 4' 8' 12'

NOTES:

- 1-CONSULT LOCAL BUILDING CODE AND HEALTH AUTHORITIES BEFORE STARTING CONSTRUCTION.
- 2- CONCRETE TO BE 3000 PSI AIR-ENTRAINED MIX.
- 3-PRESSURE TREATED MATERIAL (P.T.) SHALL BE TREATED TO A PRESERVATIVE RETENTION OF 5-7 POUNDS PER CUBIC FOOT AS PER A.W.P.A. STANDARDS.
- 4-ROOF LOAD (DEAD & LIVE) EQUALS 30 LBS./SQ. FT. CEILING LOAD-NONE REQUIRED.
- 5-CONSULT WITH COW STALL MANUFACTURER PRIOR TO POURING CONCRETE FLOOR AND CURBING.
- 6-USE TRUSSES BY REPUTABLE MANUFACTURER DESIGNED FOR 30 LBS. PER SQ. FT. (DEAD AND LIVE LOAD).



PERSPECTIVE



CROSS SECTION

SCALE:  $\frac{1}{4}'' = 1'-0''$   
12'-0" 1' 2' 3' 4'

NOTE:

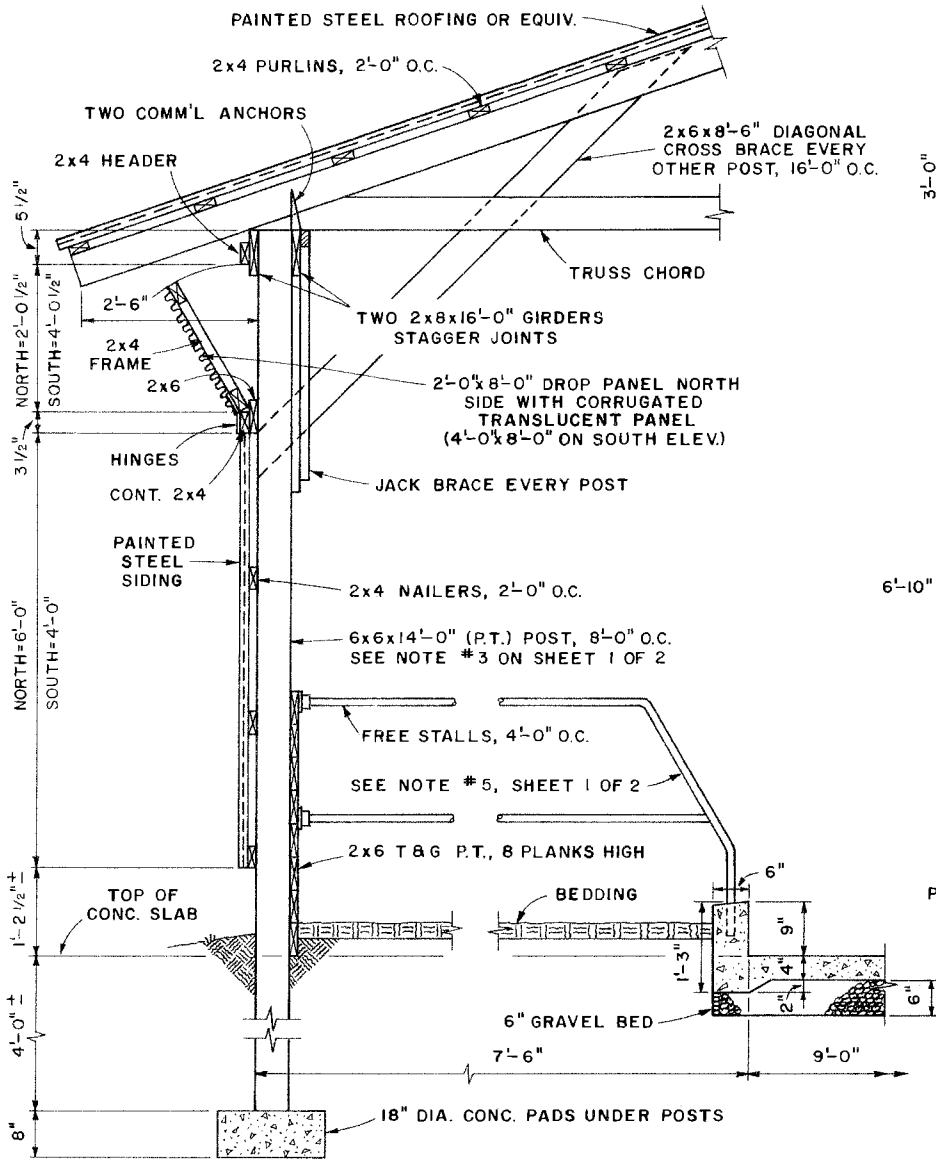
CONSULT LOCAL HEALTH AND BUILDING CODE AUTHORITIES BEFORE STARTING CONSTRUCTION.

BASED ON: RUTGERS-THE STATE UNIV. PLAN NO. 156

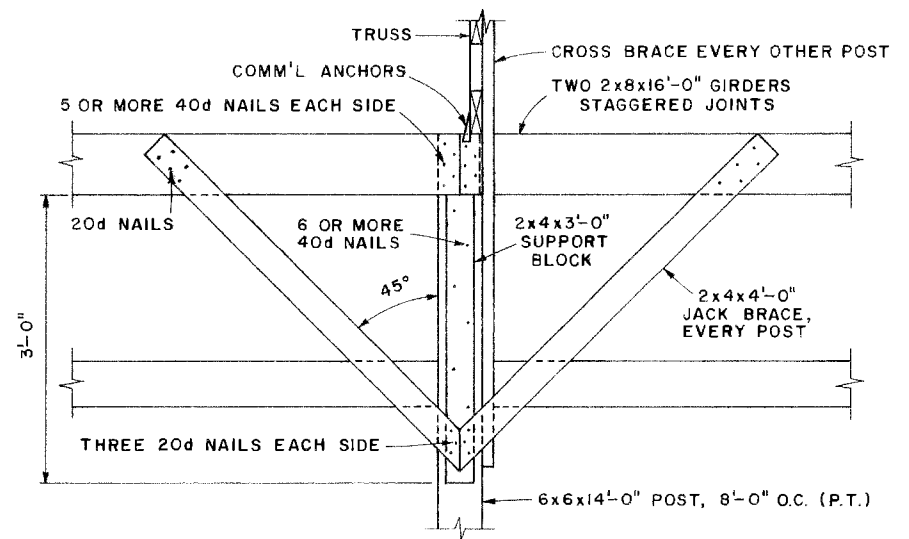


FREE STALL BARN

N.J. '76 6250 SHEET 1 OF 2

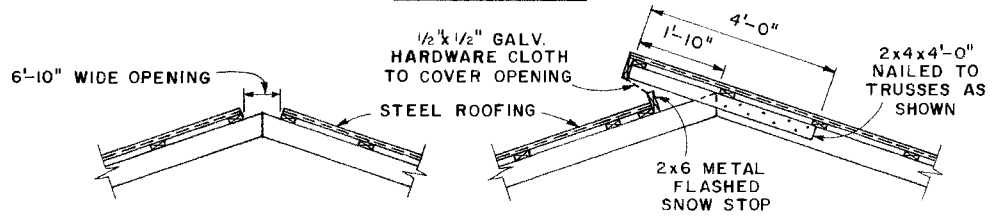


**TYPICAL WALL SECTION**  
 SCALE: 3/4" = 1'-0"  
 12" 6" 0 1' 2'

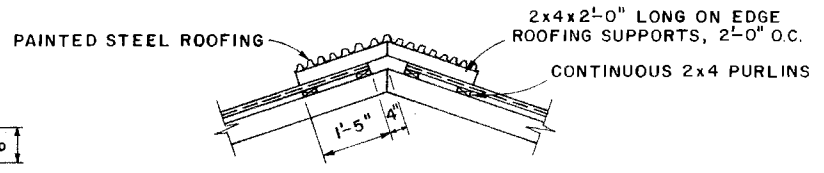


**POLE BRACING DETAILS**

SCALE: 1" = 1'-0"  
 12" 9" 6" 3" 0 1'



**ALTERNATE RIDGE DETAILS**



**RIDGE DETAIL**

SCALE: 1/2" = 1'-0" UNLESS OTHERWISE NOTED  
 12" 6" 0 1' 2'



**FREE-STALL BARN**

## Disclaimer

This site makes available conceptual plans that can be helpful in developing building layouts and selecting equipment for various agricultural applications. These plans do not necessarily represent the most current technology or construction codes. They are not construction plans and do not replace the need for competent design assistance in developing safe, legal and well-functioning agricultural building system. The LSU Agriculture Center, the Mid-West Plan Service, the United States Department of Agriculture and none of the cooperating land-grant universities warranty these plans.