

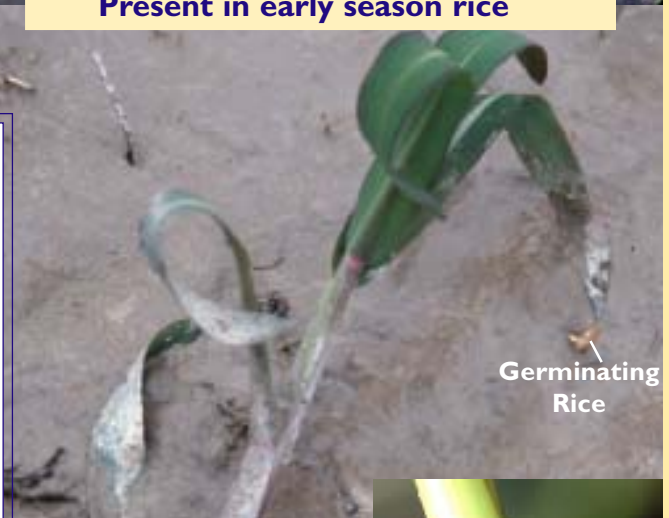
# Perennial Grasses Infesting Louisiana's Rice

## Water Paspalum

*Paspalum hydrophilum*



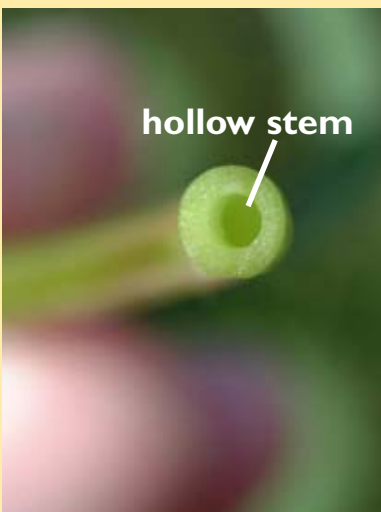
Present in early season rice



Germinating  
Rice

### Water paspalum Keys to Identification

- Hollow Stem - common only to water paspalum
- Prominent white leaf midvein
- Glabrous - no pubescence (hair) at nodes
- Leaf blade wide in proportion to stem
- Membranous ligule - no pubescence



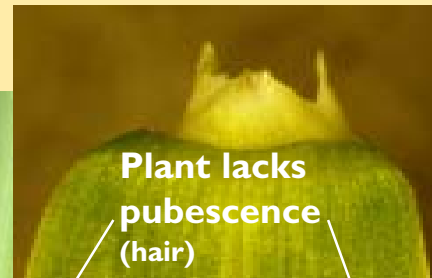
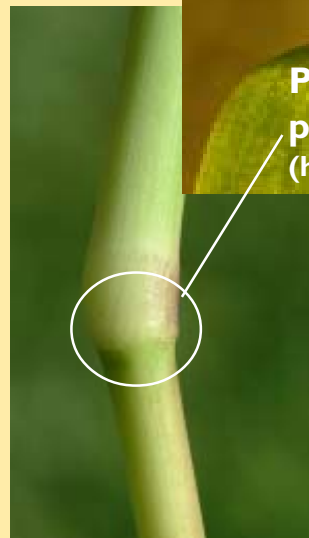
# Brook Paspalum

*Paspalum acuminatum*



## Brook paspalum Keys to Identification

- Solid Stem
- Rachis (stem bearing seeds) winged
- Plant lacks pubescence (hair at nodes)
- Leaf blade wide in proportion to stem
- Membranous ligule - no pubescence



### Acknowledgments

Ron Strahan, Extension Associate, LSU AgCenter  
 Johnny Saichuk, Rice Specialist, LSU AgCenter  
 Shane Theisumm, Extension Associate, LSU AgCenter  
 Eric Webster, Assoc. Professor, Dept of Agronomy, LSU AgCenter  
 Bill Williams, Assoc. Professor, NE Research Station, LSU AgCenter

# Knotgrass

*Paspalum distichum*



*Leaves may appear blue after fertilizer is applied.*

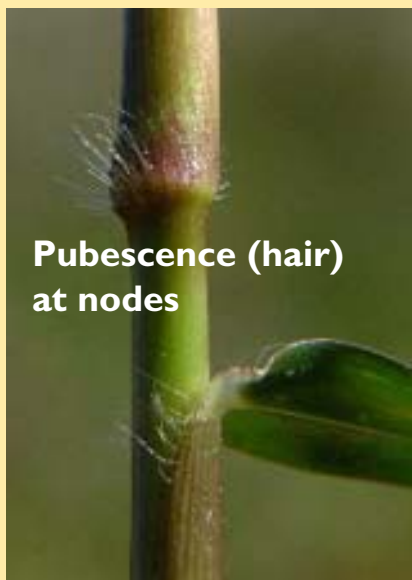


**Seed Head**

## Knotgrass

### Keys to Identification

- Solid Stem
- Leaf midvein not prominent
- Pubescence (hair) at nodes
- Leaf blade narrow in proportion to stem
- Membranous ligule with pubescence (hair) at collar region



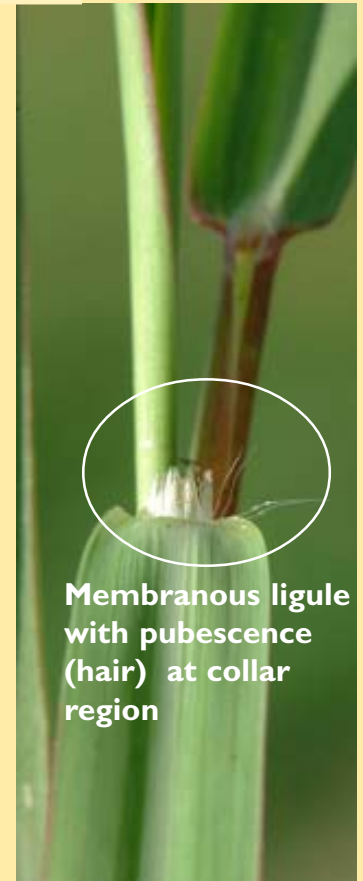
**Pubescence (hair) at nodes**



**Solid Stem**



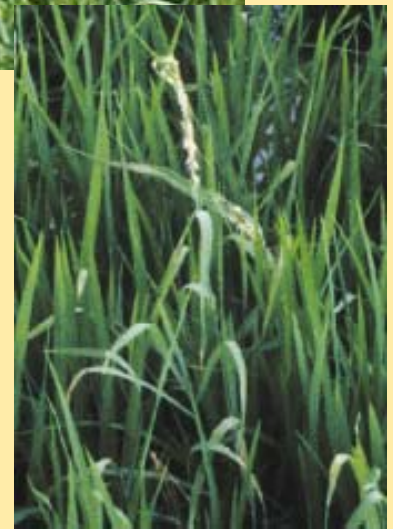
**Leaf blade narrow in proportion to stem**



**Membranous ligule with pubescence (hair) at collar region**

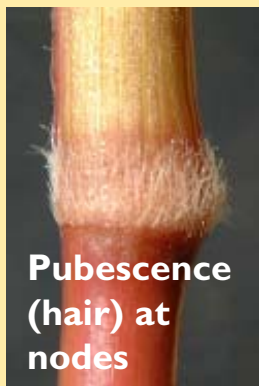
# Perennial Barnyardgrass

*Echinochloa polystachya*



## Perennial Barnyardgrass Keys to Identification

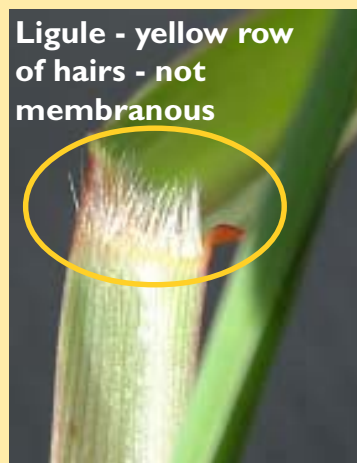
- Solid Stem
- Leaf midvein somewhat prominent
- Leaf blade narrow in proportion to stem
- Ligule - yellow row of hairs - not membranous



Pubescence (hair) at nodes



Solid Stem



Ligule - yellow row of hairs - not membranous



Leaf midvein somewhat prominent



Crown Node

Visit our Web site: [www.lsuagcenter.com](http://www.lsuagcenter.com)

Louisiana State University Agricultural Center  
 William B. Richardson, Chancellor  
 L. J. Guedry, Executive Vice Chancellor  
 Louisiana Agricultural Experiment Station  
 William H. Brown, Vice Chancellor and Director  
 Louisiana Cooperative Extension Service  
 Paul D. Coreil, Vice Chancellor and Director  
 Pub. XXXX

(1M)

2/02

Issued in furtherance of Cooperative Extension work, Acts of Congress of May 8 and June 30, 1914, in cooperation with the United States Department of Agriculture. The Louisiana Cooperative Extension Service provides equal opportunities in programs and employment.