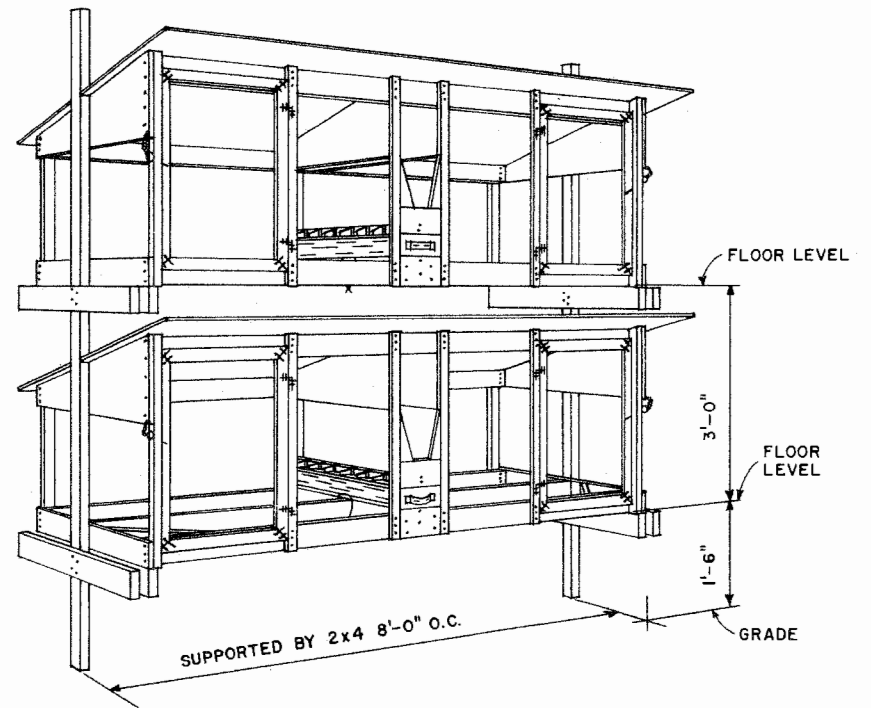
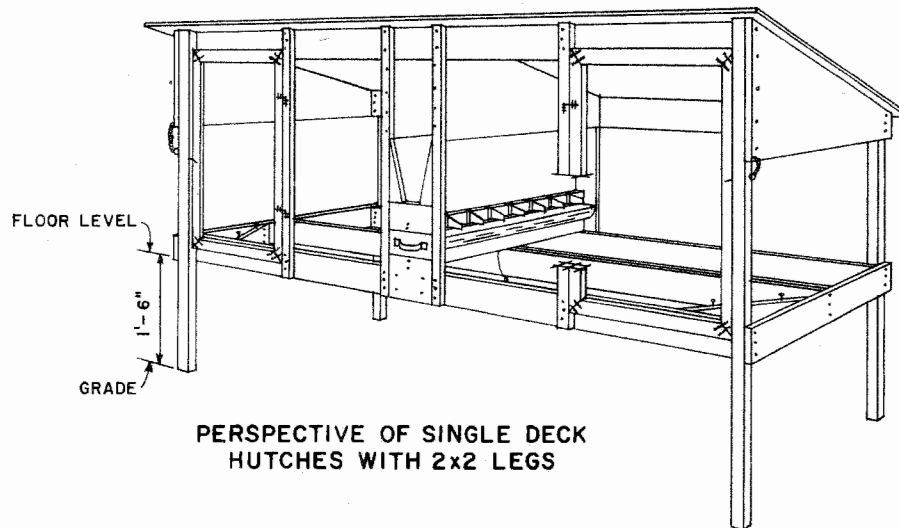


PERSPECTIVE OF DOUBLE DECK HUTCHES WITH 2x2 LEGS



PERSPECTIVE OF DOUBLE DECK HUTCHES HUNG ON 2x4 POSTS 8'-0" O.C.



PERSPECTIVE OF SINGLE DECK HUTCHES WITH 2x2 LEGS

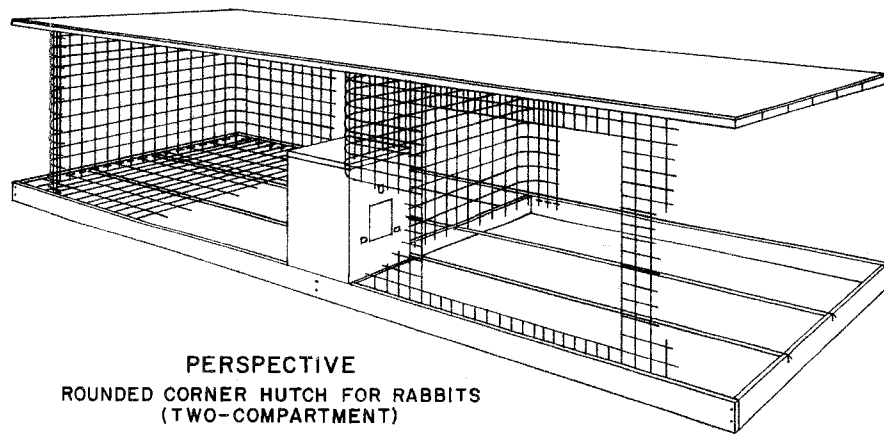
NOTE:
POULTRY NETTING NOT SHOWN
ON THESE PERSPECTIVES.



HUTCHES FOR RABBITS

N.M. & CAL. '72 6137 SHEET 1 OF 4

BASED ON NEW MEXICO PLAN



PERSPECTIVE

**ROUNDED CORNER HUTCH FOR RABBITS
(TWO-COMPARTMENT)**

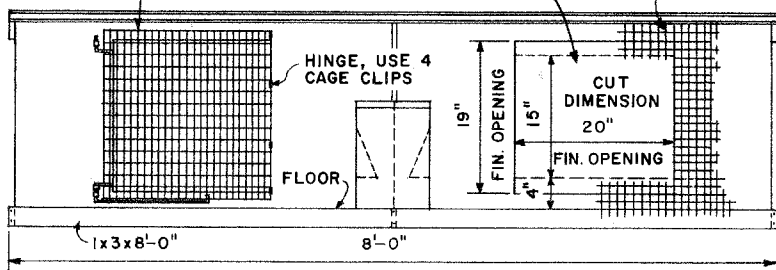
NOTES:

- A. ASSEMBLE WOOD FRAME AND COUNTERSINK METAL FLOOR SUPPORTS.
- B. STAPLE THE 16-GAUGE, 30-INCH BY 8-FOOT GALVANIZED WIRE MESH TO THE FRAME, USING 1-BY 1/2-INCH MESH FOR SMALL AND MEDIUM BREEDS OF RABBIT, AND 1-BY 3/8-INCH FOR THE LARGER BREEDS.
- C. THE CURVED WALLS ARE FORMED FROM 1/2-BY 1/2-INCH GALVANIZED WIRE MESH. CUT THE TWO BOTTOM STRANDS OF WIRE, LEAVING 1-INCH VERTICAL PROJECTIONS. THE 1-INCH PROJECTIONS ARE PLACED INSIDE THE WOOD FLOOR FRAME, FORMING TWO COMPARTMENTS, AND STAPLED.
- D. CUT THE DOOR OPENINGS BEGINNING 4-INCHES FROM THE FLOOR. THE OPENING IS REINFORCED BY TURNING 2-INCHES UP ON THE INSIDE ACROSS THE TOP AND 2-INCHES DOWN ON THE INSIDE ACROSS THE BOTTOM.
- E. CUT EVERY THIRD STRAND ON THE TOP TWO HORIZONTAL STRANDS OF THE SIDE AND REAR WALLS. THE 2-INCH TABS FORMED ARE BENT IN AT RIGHT ANGLES ACROSS THE BACK AND IN GRADUATED DEGREES ON SIDES TO GIVE A 2-INCH PITCH TO THE ROOF. TURN THE CAGE SECTION UPSIDE DOWN ON THE ROOF SHEATHING, THAT HAS BEEN ASSEMBLED WITH CORRUGATED FASTENERS, AND STAPLE. COVER ROOF WITH A 3-FOOT WIDE PIECE OF 90-POUND ROOFING FELT AND NAIL.
- F. THE DOORS ARE OF 1-BY 1-INCH WIRE MESH CUT 21-BY 24-INCHES. TO GIVE RIGIDITY TURN DOWN 1-INCH ON INSIDE ACROSS THE TOP, AND TURN UP 2-INCHES ON INSIDE ACROSS THE BOTTOM. MAKE THE DOOR FASTENERS AS SHOWN. USE ALUMINUM CAGE CLIPS FOR ALL FASTENERS AND HINGES. HINGE DOOR ON FEEDER SIDE WITH 4-CAGE CLIPS. INSTALL DOOR FASTENER WITH SMALL WIRE TIES AT THE 1 3/4- AND 1 5/8-INCH SHANKS, SO FASTENER OVERLAPS THE EDGE OF THE CLOSED DOOR TO MAKE IT SECURE.

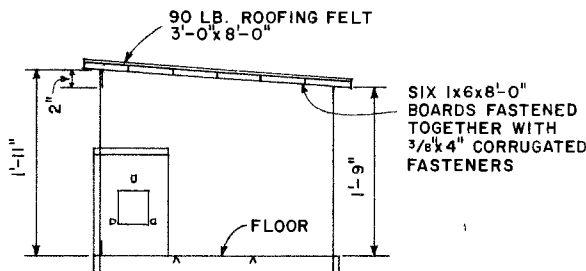
DOOR FROM 24 GA. 1 1/2" MESH CUT 21 1/2" x 24" WITH 1" TURNED DOWN ON TOP AND 2" TURNED UP ON BOTTOM FOR 21 1/2" x 21" DOOR.

DOOR OPENING, MAKE 2" FOLD TOP AND BOTTOM

TWO PIECES 1 1/2" x 24 GA. WIRE MESH 2'-0" x 13'-0"



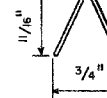
FRONT ELEVATION



SECTION

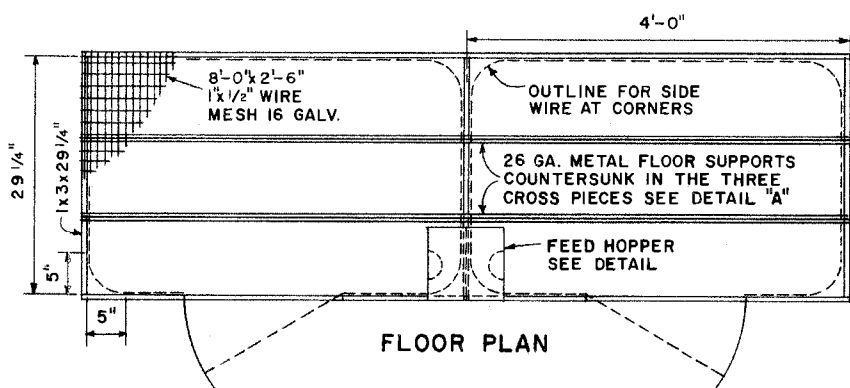
26 GA. GALVANIZED SHEET METAL 3' x 8'-0"

SIX 1x6x8'-0" BOARDS FASTENED TOGETHER WITH 3/8" x 4" CORRUGATED FASTENERS

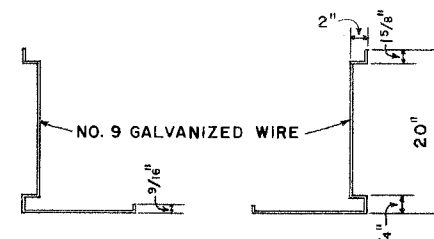


NOTE: TWO METAL FLOOR SUPPORTS ARE REQUIRED

**DETAIL "A"
METAL FLOOR SUPPORT
FULL SCALE**

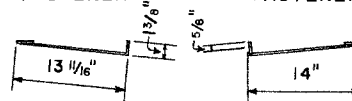


FLOOR PLAN



ELEVATION

LEFT DOOR FASTENER RIGHT DOOR FASTENER



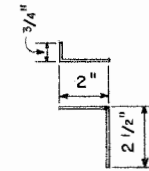
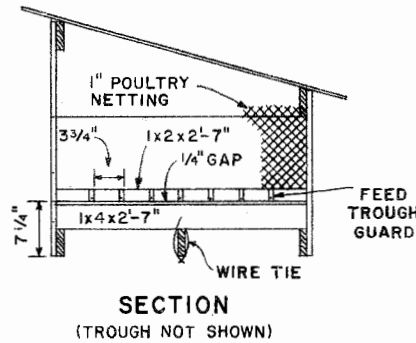
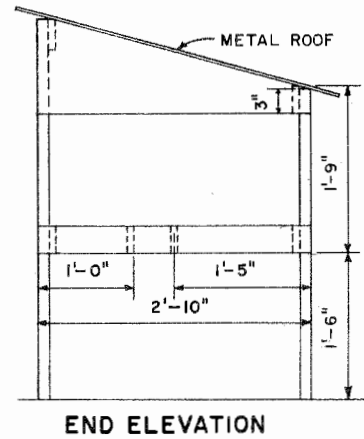
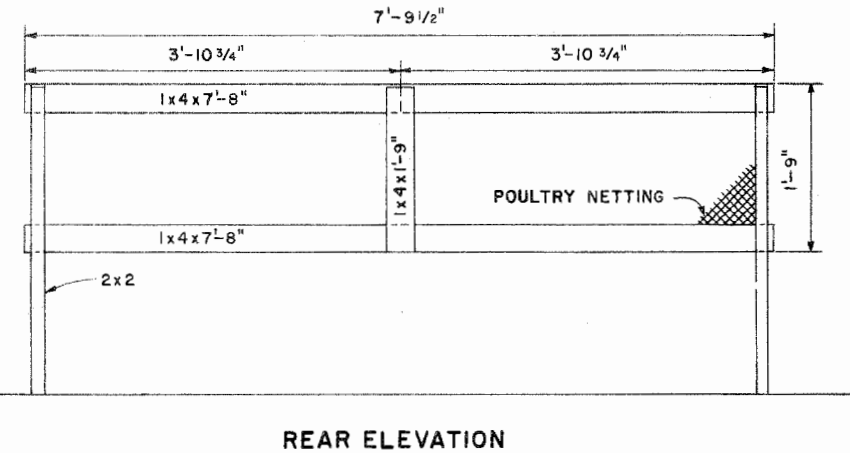
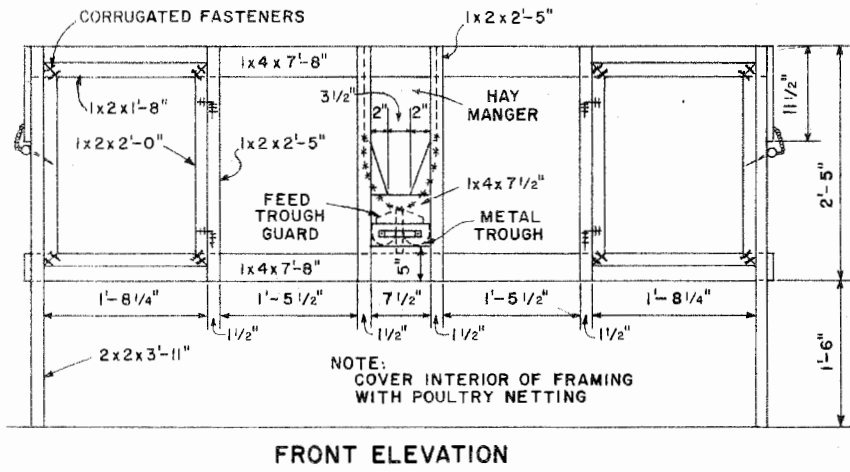
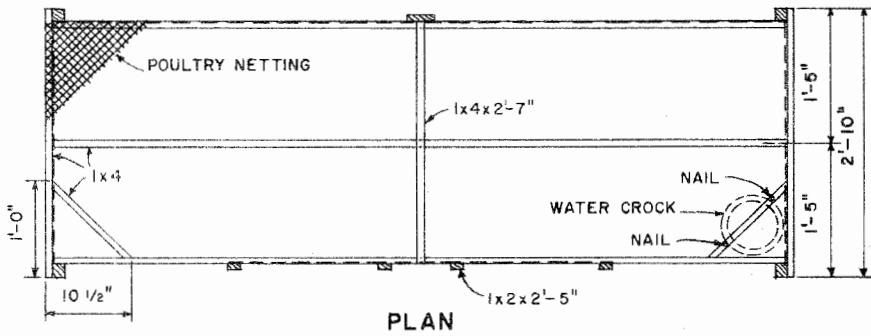
**PLAN
DOOR FASTENERS**

SCALE: 1"=1'-0" UNLESS OTHERWISE NOTED



HUTCHES FOR RABBITS

N.M. & CAL '72 **6137** SHEET 3 OF 4



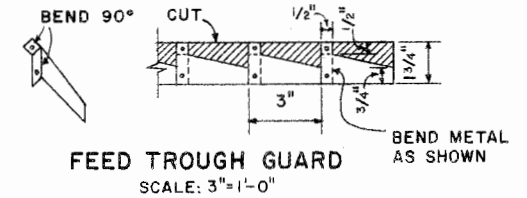
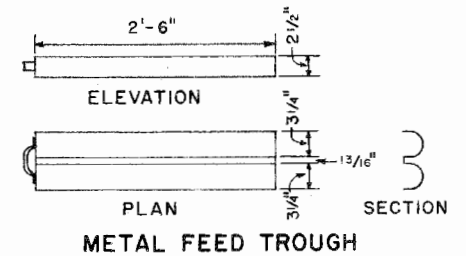
NO. 9 WIRE 5 1/4" LONG
DRIVE 3/4" END INTO
DOOR FRAME AND
STAPLE TO DOOR
AND JAMB



NO. 9 WIRE 7" LONG
DRILL A 3/16" HOLE IN
2x2 AT A 30° DOWNWARD
ANGLE AND CENTERED

DOOR HINGE
SCALE: 3"=1'-0"

DOOR LATCH
SCALE: 3"=1'-0"



SCALE: 1"=1'-0" UNLESS
OTHERWISE NOTED.

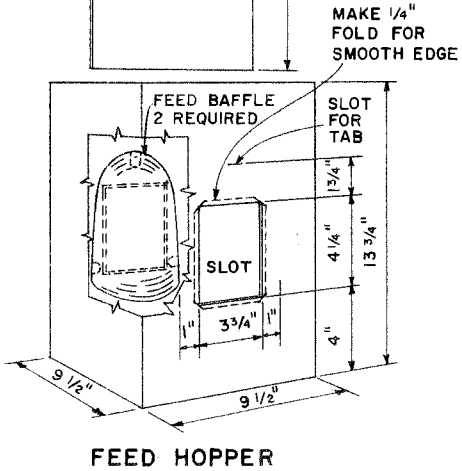
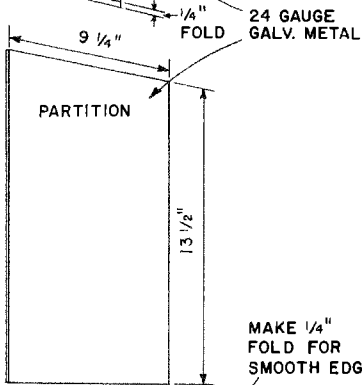
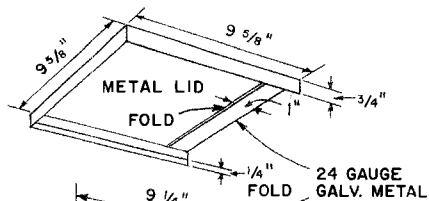


HUTCHES FOR RABBITS

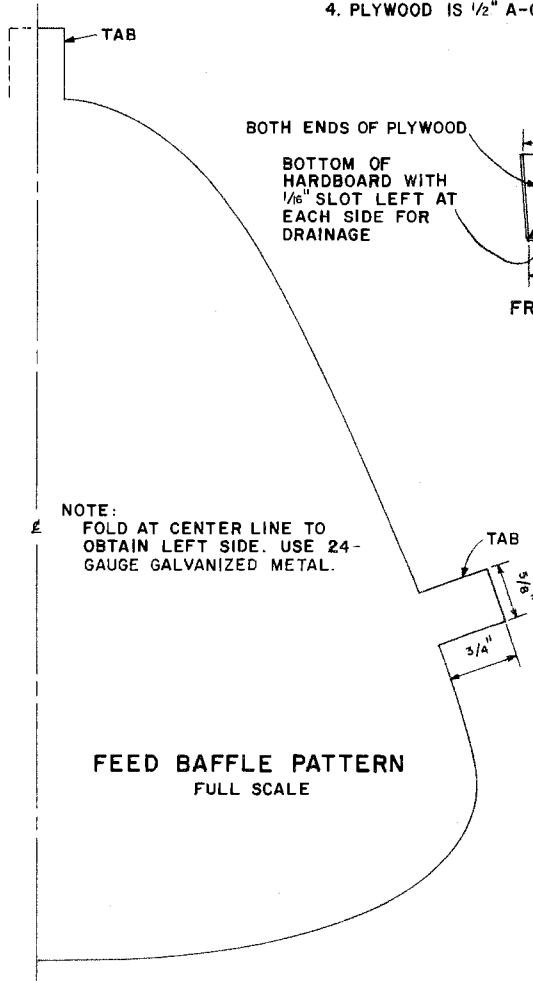
N.M. & CAL. '72 6137 SHEET 2 OF 4

BASED ON NEW MEXICO PLAN

- NOTE:
1. COVER ALL EXPOSED "CHEWABLE EDGES" WITH METAL.
 2. ALL PLYWOOD TO PLYWOOD JOINTS SHOULD BE NAILED AND GLUED.
 3. HARDBOARD IS 1/8" TEMPERED.
 4. PLYWOOD IS 1/2" A-C EXT. DFPA



FEED HOPPER

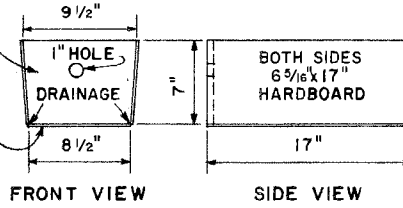


FEED BAFFLE PATTERN
FULL SCALE

NOTES:

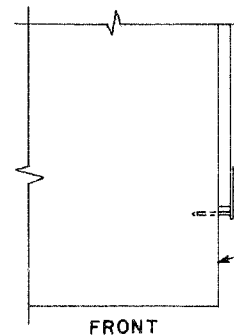
- A. THE FEED HOPPER, MADE FROM A 5-GALLON CAN, SUPPLIES FEED TO BOTH UNITS OF A DOUBLE HUTCH. BEGINNING 4 1/4-INCHES FROM THE BOTTOM OF THE CAN, CUT AN OPENING 3 3/4-INCHES HIGH AND 3 1/4-INCHES WIDE. TURN INSIDE 1/4-INCH TO MAKE SMOOTH EDGE.
- B. THE BAFFLE, LID, AND DIVIDER ARE MADE FROM 24-GAUGE GALVANIZED METAL.
- C. CUT THE BAFFLE USING FULL SIZE 1/2 PATTERN SHOWN, FOLD AT CENTERLINE TO OBTAIN OTHER 1/2-PATTERN. INSERT TABS THROUGH SLOTS SHOWN AND BEND.
- D. FOR THE LID: CUT METAL 1-INCH LARGER, ON ALL SIDES, THAN TOP OF CAN. ON THREE SIDES 1/4-INCH IS FOLDED BACK TO MAKE A SMOOTH EDGE, AND THEN 3/4-INCH IS BENT DOWN AT RIGHT ANGLES TO HOLD THE LID IN PLACE. THE 1-INCH IS FOLDED FLAT ON THE FOURTH SIDE FOR RIGIDITY. THIS ALLOWS THE CARETAKER TO SLIDE THE LID OFF THE CAN WHEN REPLENISHING THE SUPPLY OF PELLETS.

BOTH ENDS OF PLYWOOD
BOTTOM OF HARDBOARD WITH 1/16" SLOT LEFT AT EACH SIDE FOR DRAINAGE

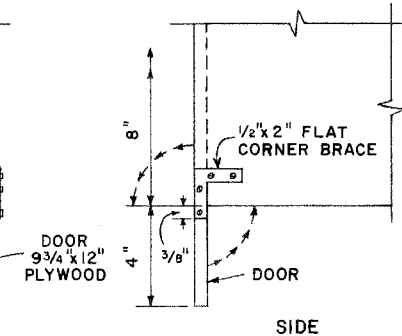


RABBIT NEST BOX DRAWER

SCALE: 1/2"=1'-0"

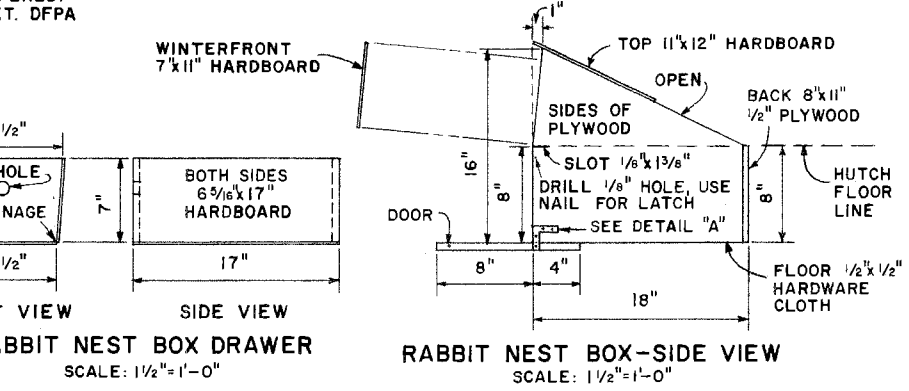


FRONT



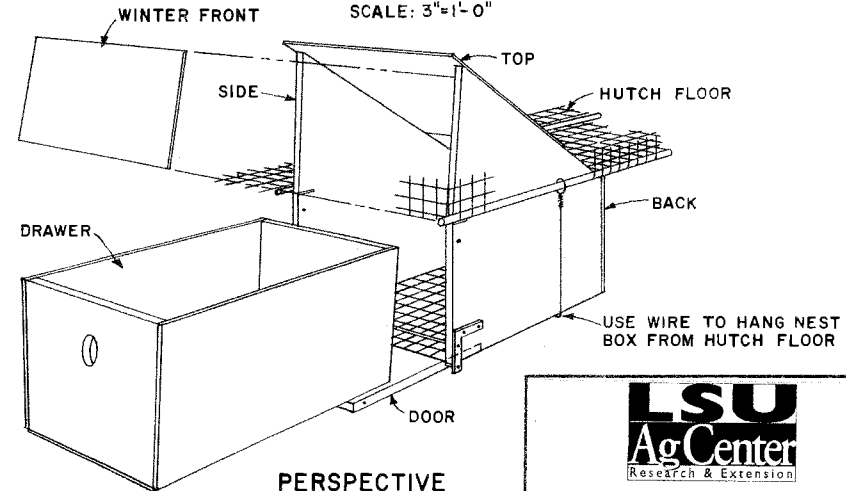
SIDE

DETAIL "A"
SCALE: 3"=1'-0"



RABBIT NEST BOX-SIDE VIEW

SCALE: 1/2"=1'-0"



PERSPECTIVE
RABBIT NEST BOX



HUTCHES FOR RABBITS

N.M. & CAL. '72 6137 SHEET 4 OF 4

Disclaimer

This site makes available conceptual plans that can be helpful in developing building layouts and selecting equipment for various agricultural applications. These plans do not necessarily represent the most current technology or construction codes. They are not construction plans and do not replace the need for competent design assistance in developing safe, legal and well-functioning agricultural building system. The LSU Agriculture Center, the Mid-West Plan Service, the United States Department of Agriculture and none of the cooperating land-grant universities warranty these plans.