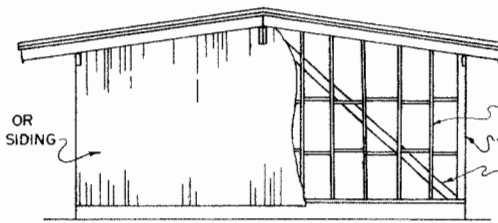


SIDE ELEVATION

BRACE DIAGONALLY ON
36'-0" INTERVALS BOTH
DIRECTIONS



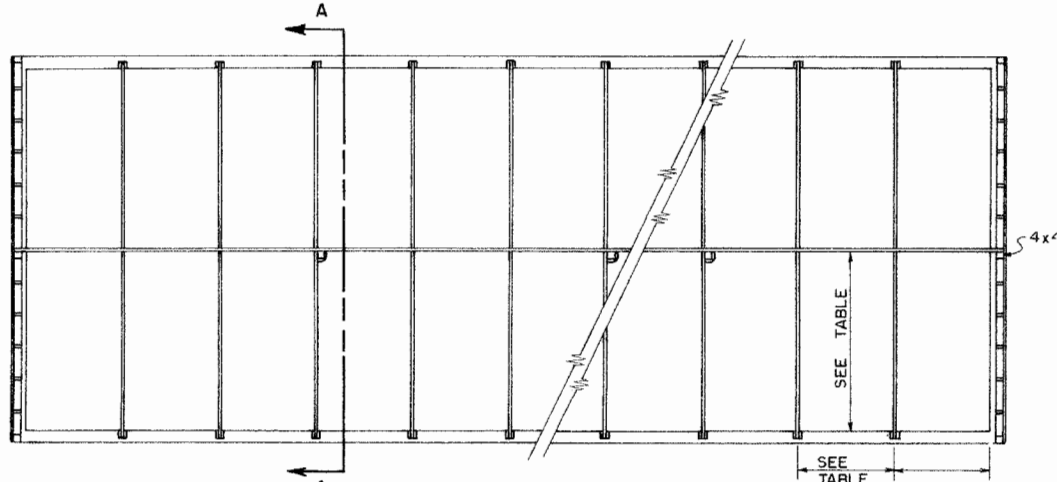
END ELEVATION

METAL OR
WOOD SIDING

2x4 STUDS
16" O.C.

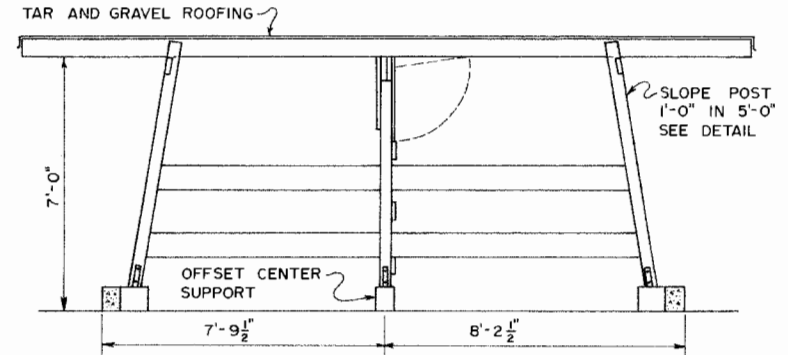
4x4 CORNER

BRACE DIAGONALLY AT
ENDS AND AT INTERVALS
NOT EXCEEDING 36'-0"



PLAN

SEE TABLE



ALTERNATE SECTION
FLAT ROOF - INSET - SLOPING - STALL FRONT
TAR AND GRAVEL ROOF

TAR AND GRAVEL ROOFING

7'-0"

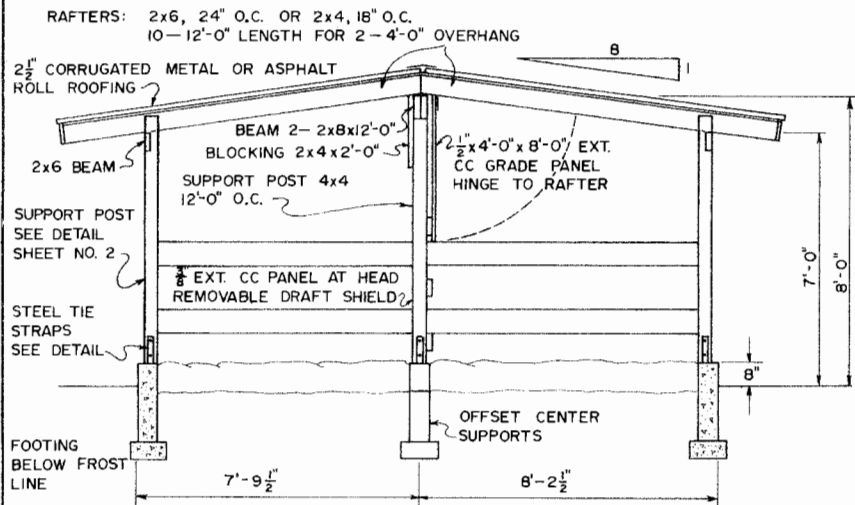
SLOPE POST
1'-0" IN 5'-0"
SEE DETAIL

4x4

OFFSET CENTER
SUPPORT

7'-9 1/2"

8'-2 1/2"



SECTION A-A
GABLE ROOF VERTICAL FRONT

RAFTERS: 2x6, 24" O.C. OR 2x4, 18" O.C.
10'-12'-0" LENGTH FOR 2'-4'-0" OVERHANG

2 1/2" CORRUGATED METAL OR ASPHALT
ROLL ROOFING

2x6 BEAM

SUPPORT POST
SEE DETAIL
SHEET NO. 2

STEEL TIE
STRAPS
SEE DETAIL

FOOTING
BELOW FROST
LINE

BEAM 2-2x8x12'-0"

BLOCKING 2x4x2'-0"

SUPPORT POST 4x4
12'-0" O.C.

2 1/2" x 4'-0" x 8'-0" EXT.
CC GRADE PANEL
HINGE TO RAFTER

1/2" EXT. CC PANEL AT HEAD
REMOVABLE DRAFT SHIELD

7'-0"

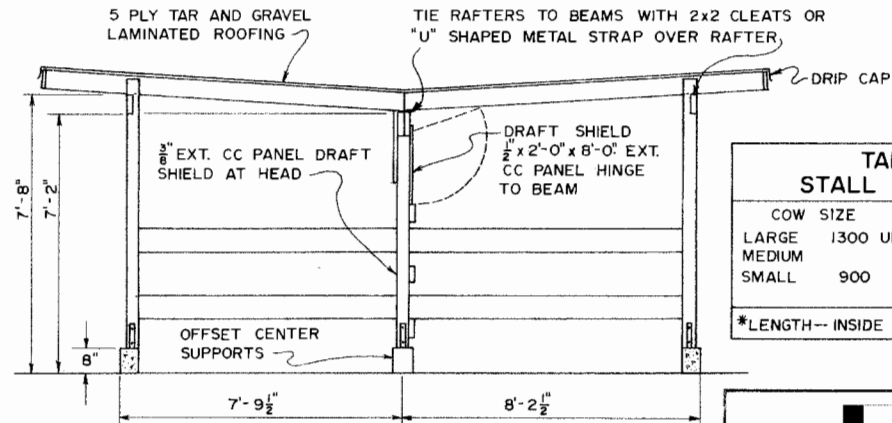
8'-0"

8"

7'-9 1/2"

8'-2 1/2"

OFFSET CENTER
SUPPORTS



ALTERNATE SECTION
CENTER SLOPING ROOF FOR RUNOFF

5 PLY TAR AND GRAVEL
LAMINATED ROOFING

TIE RAFTERS TO BEAMS WITH 2x2 CLEATS OR
"U" SHAPED METAL STRAP OVER RAFTER

DRIP CAP

7'-8"

7'-2"

8"

1/2" EXT. CC PANEL DRAFT
SHIELD AT HEAD

DRAFT SHIELD
1/2" x 2'-0" x 8'-0" EXT.
CC PANEL HINGE
TO BEAM

OFFSET CENTER
SUPPORTS

7'-9 1/2"

8'-2 1/2"

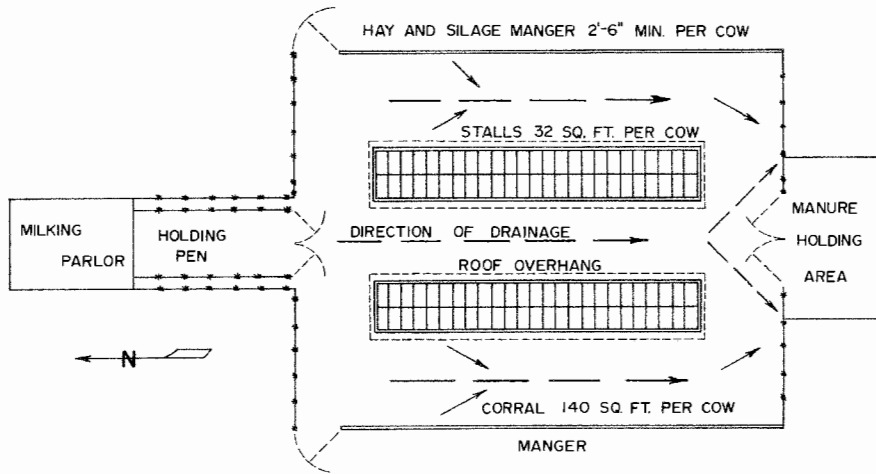
TABLE STALL DIMENSIONS			
COW SIZE	WIDTH	*LENGTH	
LARGE 1300 UP	48" MIN.	7'-6"	
MEDIUM	44" MIN.	7'-0"	
SMALL 900	40" MIN.	6'-6" TO 7'-0"	

*LENGTH-- INSIDE STALL MEASUREMENT

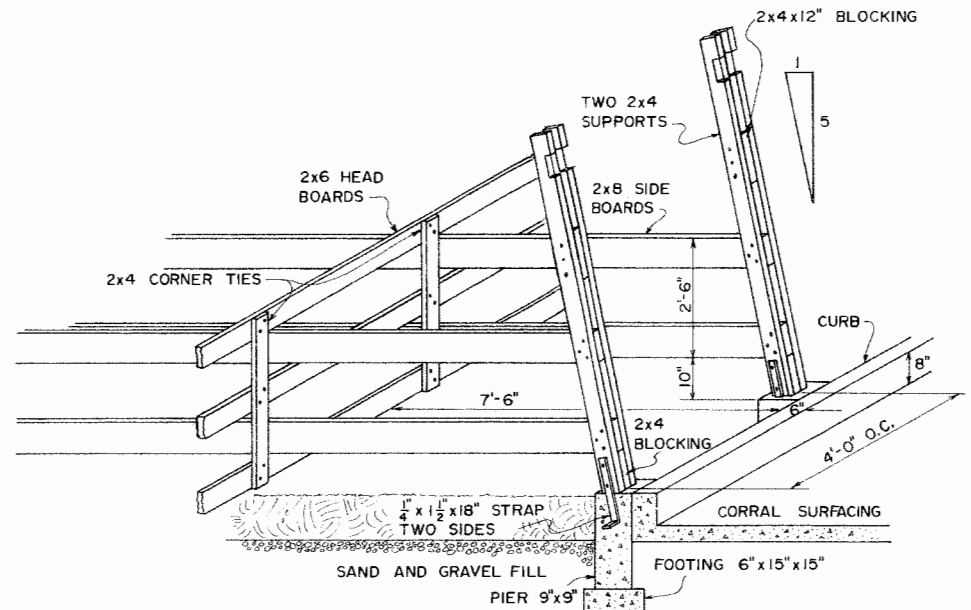
LSU
AgCenter
Research & Extension

FREE-STALL SHED

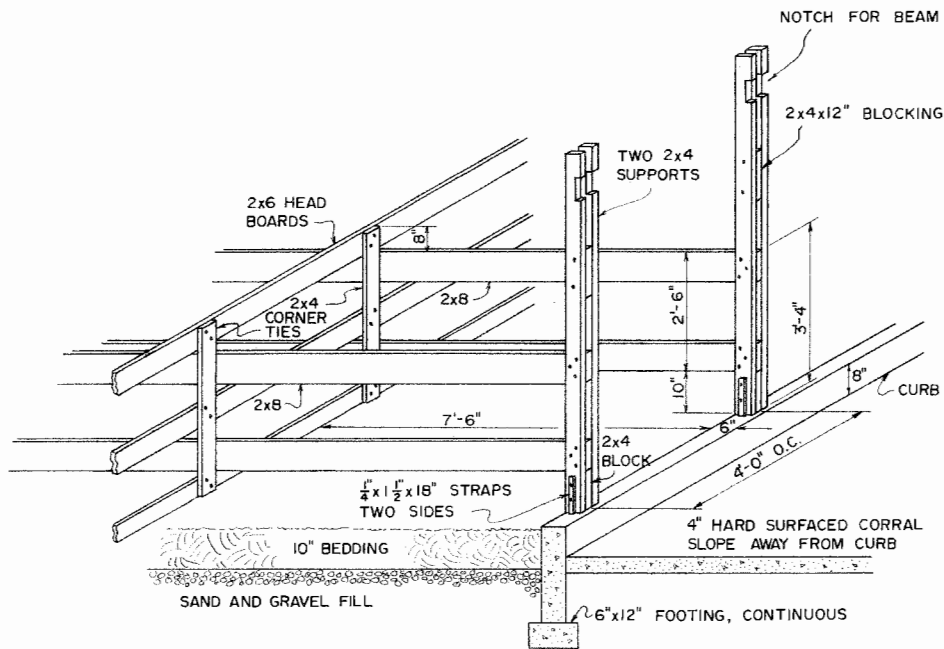
UTAH '69	EX. 6067	SHEET 1 OF 2
----------	----------	--------------



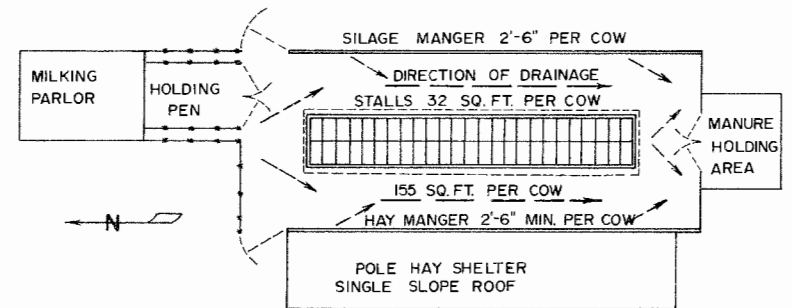
PLOT PLAN - 100 COW UNIT



DETAIL OF INDIVIDUAL STALL - SLOPING FRONT - FRAME CONSTRUCTION



DETAIL OF INDIVIDUAL STALL - VERTICAL FRONT FRAME CONSTRUCTION



PLOT PLAN - 50 COW UNIT



FREE-STALL SHED

UTAH '69 EX. 6067 SHEET 2 OF 2

Disclaimer

This site makes available conceptual plans that can be helpful in developing building layouts and selecting equipment for various agricultural applications. These plans do not necessarily represent the most current technology or construction codes. They are not construction plans and do not replace the need for competent design assistance in developing safe, legal and well-functioning agricultural building system. The LSU Agriculture Center, the Mid-West Plan Service, the United States Department of Agriculture and none of the cooperating land-grant universities warranty these plans.