

Concordia 4-H

Concordia Parish 4-H
405 Carter Street
3rd Floor
Vidalia LA 71373

Phone: 318-336-7084
Fax: 318-336-5832

- Concordia 4-H Agent -

Joe P. Bairnsfather
Extension Agent (4-H)
jbairnsfather@agcenter.lsu.edu

"To Make the Best Better"
Visit our web site
www.lsuagcenter.com



LA Character Lifestyles Responsibility

A person of character meets the demands of duty, is accountable, pursues excellence, and exercises self-control.

- * Do What You Are Supposed To Do
- * Use Self-Control
- * Persevere: Keep On Trying
- * Be Self-Disciplined
- * Always Do Your Best
- * Think Before You Act—Consider the Consequences
- * Be Accountable For Your Choices

COOKERY CONTEST

December 8, 2014- Concordia Community Room—Hwy. 15 Ferriday, LA. 4-H'ers need to call and pre-register by 4:00pm December 5th -**Phone 318-336-7084** Day of contest-Check in: 5:00pm. Judging Begins: 5:30pm. Requirements: 4-H members aged 9 to 19 are eligible to compete. All ages will compete together. **Dishes must be already prepared and ready to serve. As with all 4-H food related contests, dishes must be chilled and transported in an insulated ice chest with ice. Dishes not properly chilled will be disqualified.** Each 4-H'er may enter one dish in each category. Adults will not be allowed to accompany 4-H'ers into the contest judging area. Each 4-H'er must set up and garnish his/her own dish without assistance from an adult. **Dish Categories:** Top winner in each category will represent the parish at Area Cookery Contest.

Rice Main Dish: Dish must contain at least one cup of uncooked rice or two cups of cooked rice (white or brown rice). If contestant is using rice bran instead of rice, the recipe must contain at least ¼ cup of rice bran. Wild rice is acceptable as long as there are two cups of cooked white or brown rice also included in the dish. Dish must contain a protein. (Example: meats, eggs, beans, etc..)

Rice Any Other: Dish must contain at least one cup of uncooked rice or two cups of cooked rice (white or brown rice). If contestant is using rice bran instead of rice, the recipe must contain at least ¼ cup of rice bran. Wild rice is acceptable as long as there are two cups of cooked white or brown rice also included in the dish. Any type rice dish other than a main dish may be entered. Dish could be a salad, dessert, and/or side dish.

Egg: Dish must utilize a minimum of four (4) eggs. This can be four whites, four yolks, or four whole eggs. No raw eggs will be allowed in final product. The recipe with four eggs must make only one standard size dish. For example, a recipe with four eggs that makes two pies of standard size will not qualify. Any type egg dish may be entered including appetizer/salad, main dish, or dessert.

Chicken: Dish must contain a minimum of two (2) pounds bone-in or one (1) pound deboned chicken. Any type chicken dish may be entered.

If you have a disability which requires special assistance for your participation in 4-H meetings or activities, please call Concordia Extension Office at 336-7084. Membership and participation in activities and events are open to all citizens without regard to race, color, national origin, gender,

4-H Clover Blog



Concordia 4-H

November 2014

4-H News & Notes for Grades 4-12

4-H DATE LINE

November 2014

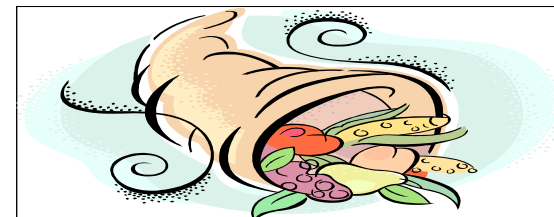
TBA Bicycle Rodeo
3 Junior Leader Meeting (Con/Catahoula)
8 Deadline to sign up for State 4-H Fashion Camp (Camp Grant Walker) 10-13 yr. olds
10 Shooting Sports-Firing Range 4:00pm
19 Christmas Cards Due
19 Get the Picture "Louisiana Halloween Fun" Due
27-28 4-H Office Closed

December 2014

1 Junior Leader Meeting
8 Shooting Sports-Firing Range 4:00pm
8 Cookery Contest Community Room - Hwy 15, Ferriday: Check In - 5:00pm
12 Agricultural 4-H Photo Entries Due
12 Get the Picture-"Louisiana Foods" Due
24 —1/1/15 4-H Office Closed/Holidays
January 2015
5 Junior Leader Meeting (tentative)
9 LA 4-H CAN Fight Hunger Deadline-Report weights to 4-H Office
12 Shooting Sports-Firing Range 4:00pm
16 Get the Picture Due- "Louisiana Waters"- Due
24-25 State 4-H Fashion Camp (10-13 years old)

February 2015

4-7 Northeast District Livestock Show (Delhi)
6 Hoops and Clovers-Ticket Orders Due
20 Get the Picture" - "Louisiana Animals" -Due
23 Area Cookery (Rayville Civic Center)
27 4-H Night with the Pelicans (New Orleans)



"4-H Louisiana Theme Flag" Winners

Thank you to the 122 4-H youth that designed a "4-H Louisiana Theme Flag" to promote National 4-H Week. Top club winners were: **CPA** - John - Garrett Patrick, Ahsyria Williams: **M4** - Madison Poole, Lillie Bazile, Lida McCall, Ayla Cousin, Joseph Poindexter, Juliana Adams: **MJH6**- Calen McCartney, Madeline Mount, Anna Poole, Tyler Boyette, Kalan Marshall: **V4** - Joelee Bonnette, Natilie Hill, Taliyah Johnson, Mallori Harveston, Shakyra Blanton, Leah Wilson, Carson Ibarra, Landon Mullins, Tyhiera Harris: **V5** - Ke'Shona Butler, Brianna Parker, Shelby Roberts, Anna Corley, Hanna Jackson, Jahkeria Carter, Nikeria Davis, Dylan Boxley. **MJH**- Aislyn Dryg :**MHS**—Merrideth Chapman, Jillian Bostic, Bailey Book, Tiffany Weeks, Sidney Woodruff. **Top Parish Winners**—Landon Mullins (V4); Mallori Harveston (V5); Tyhiera Harris (V4); Lillie Bazile (M4); Lida McCall (M4); Madison Poole(M4); Brianna Parker (V5); Joelee Bonnette (V4); Aislyn Dryg (MJH).

"Louisiana CAN Fight Hunger" Campaign

4-H Clubs from throughout the parish can participate in the "Louisiana CAN Fight Hunger" Campaign by collecting cans of food. It is each individual club's option as to who the food will be given to. It can be given to a needy family in your community or to a food bank. We will need each club to provide us with the weight of the food collected so this can be given to the State 4-H Campaign. This campaign will continue until January 10, 2015. A special THANK YOU for reaching out to those in need in our communities and parish!

2014 LA Connections Camp: Be Incredible: The schedule kicks off on Friday, December 12th at 6:00pm and concludes at 9:30am on Sunday, December 14th at the Camp Grant Walker Educational Facility in Pollock, Louisiana. Camper/Volunteer Eligibility: Each parish has the opportunity to send a team of 4-H campers who are in 7th-9th grade. There is no limit on the number of campers a parish can send. Parishes that send 5 or more youth should make an effort to send an overnight chaperone to help with supervision during camp. The fee is \$40.00 for each participant which includes a t-shirt. The parish 4-H club will pay the additional \$35 fee. The deadline to register for this camp is November 7, 2014. Tracks will include learning about special needs awareness and how to prevent bullying through relay races, arts and crafts and many other activities to become incredible 4-Hers. Track selection will include: Violet Track, Syndrome Track, Edna Track, Elasta Girl Track, and Dash Track. Each track will have a unique activity in teaching those attending about special needs awareness and bullying prevention., Contact the 4-H office at 336-5315 for an application.

ULM 4-H Night (Football)

Special discounted tickets are available for you and your family to purchase to attend the college football game between the ULM Warhawks and the ULL Ragin Cajuns on Saturday, November 15, 2014 at Malone Stadium in Monroe at 6:00pm. The tickets will be on sale for \$12. To purchase tickets call 318- 342-3856 using promo code (4HSpecial) or order online at <http://tinyurl.com/4HSpecial> . Proceeds from ticket sales will go to support 4-H programs in the Northeast Region. 4-H Day at the Grove tailgating will begin at 1:00pm. Be sure to come by and visit the LSU AgCenter 4-H tent! Hope you will get the opportunity to come out and enjoy the night with 4-Hers from throughout northeast Louisiana. Also, a 4-H member will be selected to sing the National Anthem before the game. Interested in performing submit A Capella recording by October 27, 2014 to parish 4-H office for consideration.

4-H Night with the Pelicans

The annual 4-H Night with the New Orleans Pelicans is scheduled for Friday, February 27, 2015 vs. the Miami Heat. This annual event brings 4-H's Clubs together for a fun night of interactive games, access to pre-game team warm-ups, Pelicans basketball, and exclusive in-game activities. Plus, a portion of ticket sales will benefit Louisiana 4-H! Packages include access to the pre-game party, your chance to participate in an on-court fan experience, and a Hoops & Clovers T-shirt. Deadline to order tickets for the game is February 6, 2015. There will also be a private pre-game party at the Smoothie King Center for those purchasing tickets. Opportunities and additional information about this event will be included in our December newsletter.

GET THE PICTURE CONTEST

- ♦ Photos must be taken by 4-H'er within the last year
- ♦ Photos must be 3 1/2 x 5 or 4 x 6 (your choice). Printed pictures from digital cameras are allowed
- ♦ Divisions: 4th—5th; 6th—12th
- ♦ Complete and attach the entry form below to the back of the picture with clear tape.
- ♦ Turn in to your 4-H Leader or bring to 4-H Office by the due date
- ♦ December Category: "Louisiana Foods" Due: December 12, 2014
- ♦ January Category - "Louisiana Waters" Due: January 16, 2015

5 Points



4-H Photography Contest: " Louisiana Halloween Fun". Date Due: November 19, 2014

Name: _____ **School:** _____ **Grade:** _____

Division: (Circle one): 4th-5th 6th - 12th

4-H Clover Blog

Agriculture 4-H Photography Contest



Entries are due in the 4-H office (Extension Office) no later than December 12, 2014 to compete.

Rules and Regulations:-All pictures must relate to Agriculture. -Open to all 4 -H youth 4th-12th grade. -Divisions will include: 4th – 6th **and** 7th – 12th -Picture must be taken by individual listed on entry label. -Entry label must include name, parish, grade, and category. -Photograph entered must have been taken during 2014 and in Louisiana. -All entries must be 8" x 10" (color or black/white). **(No other size pictures will be accepted)** -All 8"x 10" pictures must be mounted on a 10" x 12" thin art/mount board to allow a 1" border. **(Please no foam core board)** -Each photograph must include a one-line title mounted on thin art/mounted board below picture. -You are limited to enter only one picture in each of the categories that are listed below. -Entries cannot be duplicated. -Winning photographs will be displayed during Ag Expo –January 17-18, 2015.-All photographs will be returned to parish extension offices in February 2015-Ink jet prints acceptable

PHOTOGRAPHY CONTEST CATEGORIES:

Farm Animals Horticulture/Plants/Crops Any Other Agriculture



State 4-H Fashion Camp

The State 4-H Fashion Camp will be held January 24-25, 2015 at the Grant Walker Educational Center located in Pollock , LA. All youth 10-13 years of age are eligible to attend. Each parish is limited to two 4-H members and 1adult volunteer. This year's theme is "I Partied With The State 4-H Fashion Board". The 4-H Fashion Board will be conducting the camp teaching fun projects to learn about basic sewing skills. Each participant will bring home several items and ideas to use in their parish. Interested youth can contact the 4-H office for registration. (336-5315) The camp will begin on Saturday , January 24 at 9:30 am and end on Sunday, January 25 at 11:00am. Deadline to sign up to attend this camp is December 8, 2014. The cost is \$40/camper and volunteer. There is also a supply list that will be provided to you once you are registered. All interested youth and adults need to contact the 4-H office to complete registration form prior to December 8th. The camp is limited to 48 youth and on a first come first served basis.

Christmas Card Contest

Due **November 19th** (Wednesday)-Must be picked up on this day so cards can be judged and displayed. Rules: Two categories: 1.Small cards 2. Large cards
Small cards can be anything smaller than the poster board cards folded in half. Cards can be folded whatever way you prefer. **Large cards** will be the size of a poster folded to (11 x 14) which is in half. All cards can be made of any material. *(No glitter is allowed)* Judging will be based on creativity, neatness, and holiday spirit. The top three individuals will be awarded in the small card and large card. (10 points) Hope you will show your Christmas spirit by making a card! Awards will be 1st-\$10, 2nd-\$8 and 3rd- \$6 for each category.