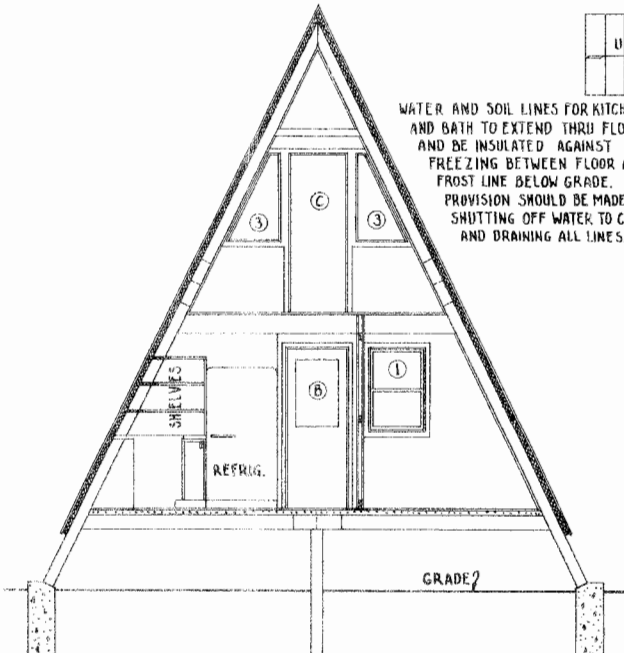
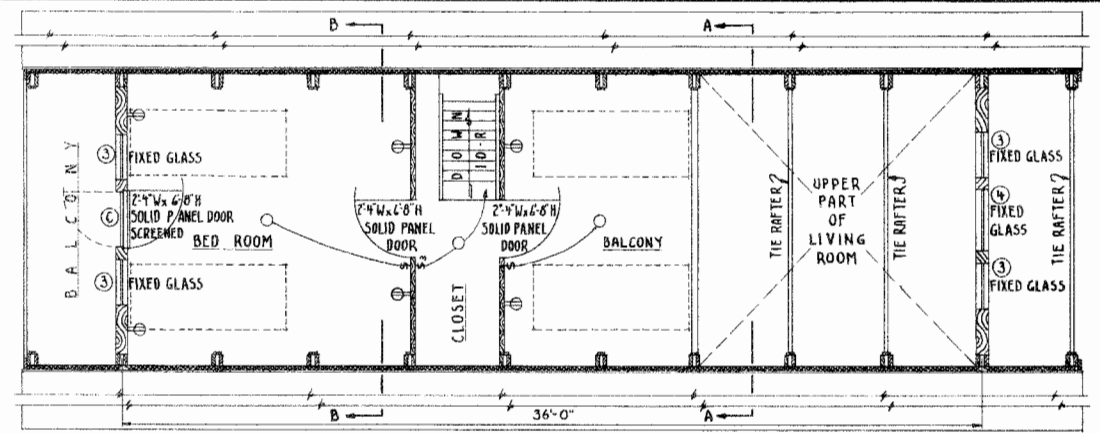


SECTION A-A
SCALE 1/4" = 1'-0"



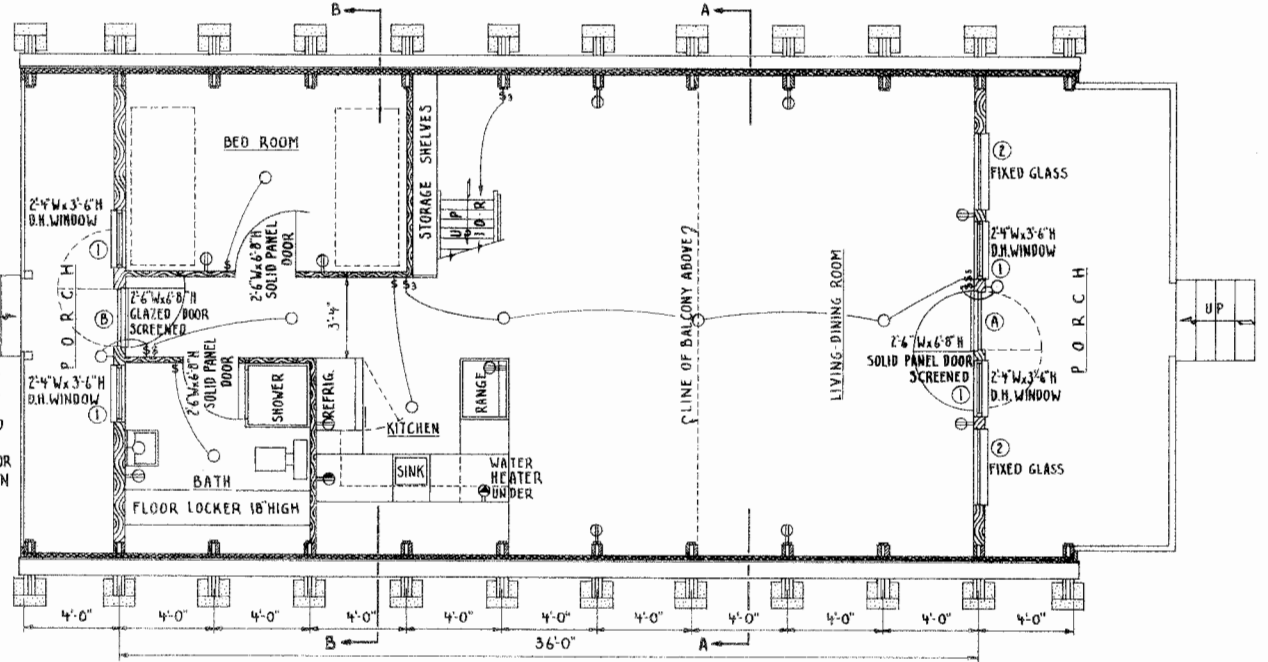
SECTION B-B
SCALE 1/4" = 1'-0"

WATER AND SOIL LINES FOR KITCHEN AND BATH TO EXTEND THRU FLOOR AND BE INSULATED AGAINST FREEZING BETWEEN FLOOR AND FROST LINE BELOW GRADE. PROVISION SHOULD BE MADE FOR SHUTTING OFF WATER TO CABIN AND DRAINING ALL LINES.



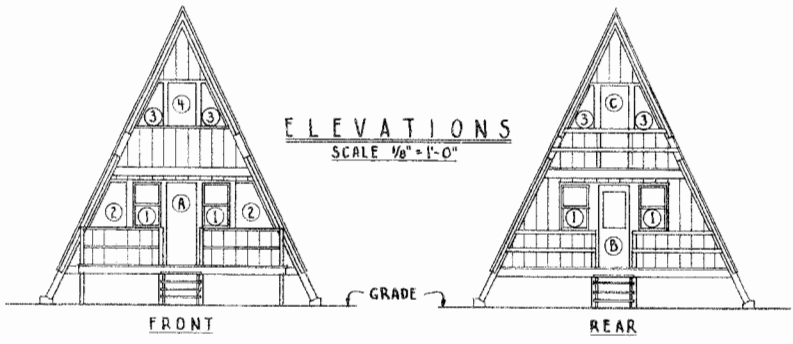
SECOND FLOOR PLAN

SCALE 1/4" = 1'-0"



FIRST FLOOR PLAN

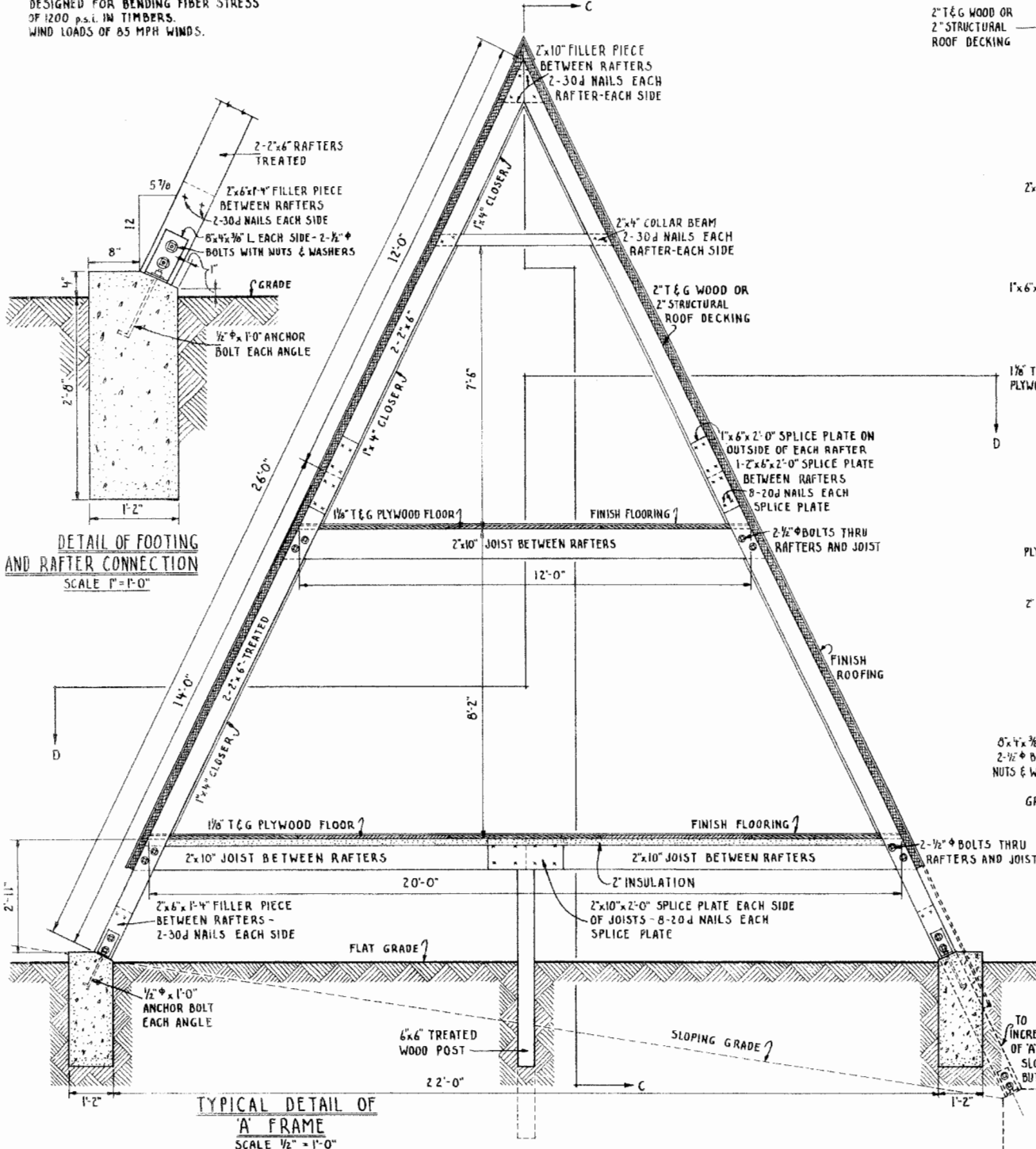
SCALE 1/4" = 1'-0"



ELEVATIONS
SCALE 1/8" = 1'-0"

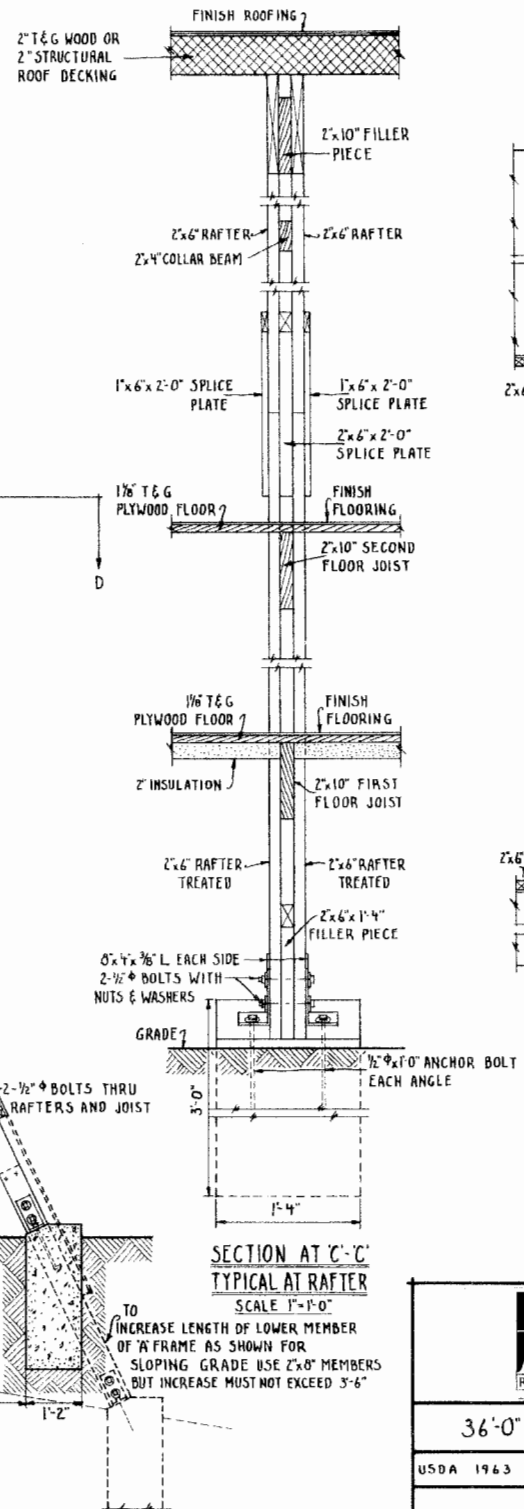
LSU AgCenter Research & Extension		
36'-0" A' FRAME CABIN		
USDA 1963	EX. 5965	SHEET 1 OF 3

NOTE -
 DESIGNED FOR BENDING FIBER STRESS
 OF 1200 p.s.i. IN TIMBERS.
 WIND LOADS OF 85 MPH WINDS.

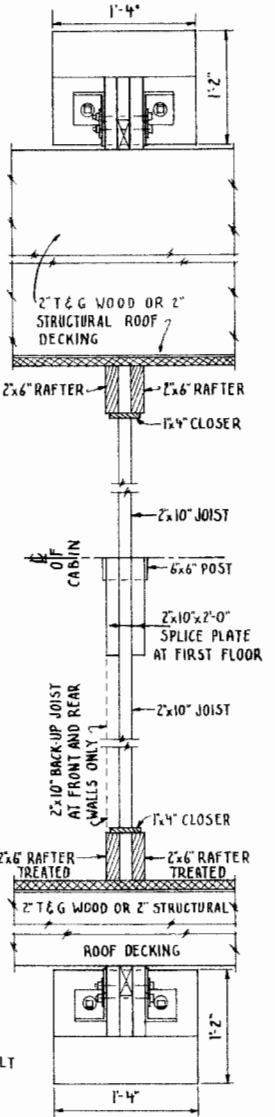


TYPICAL DETAIL OF
 'A' FRAME
 SCALE 1/2" = 1'-0"

DETAIL OF FOOTING
 AND RAFTER CONNECTION
 SCALE 1" = 1'-0"



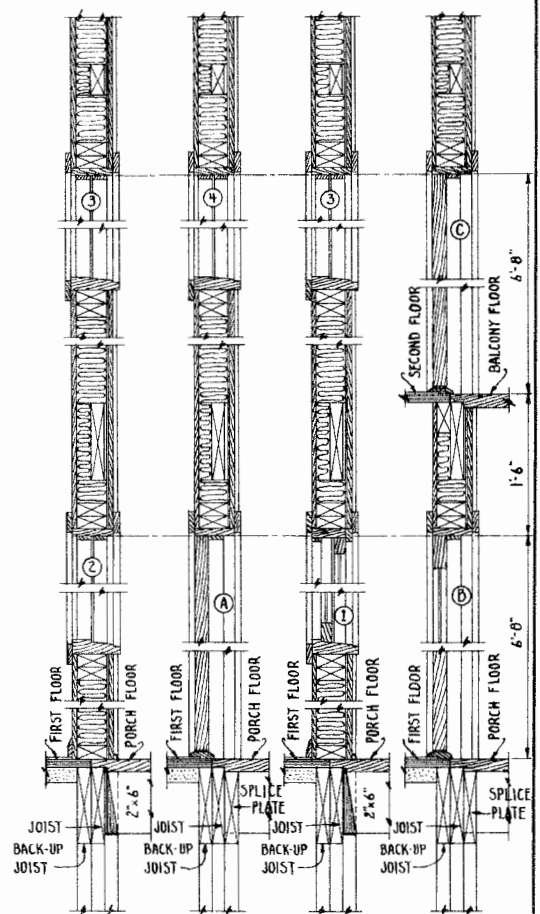
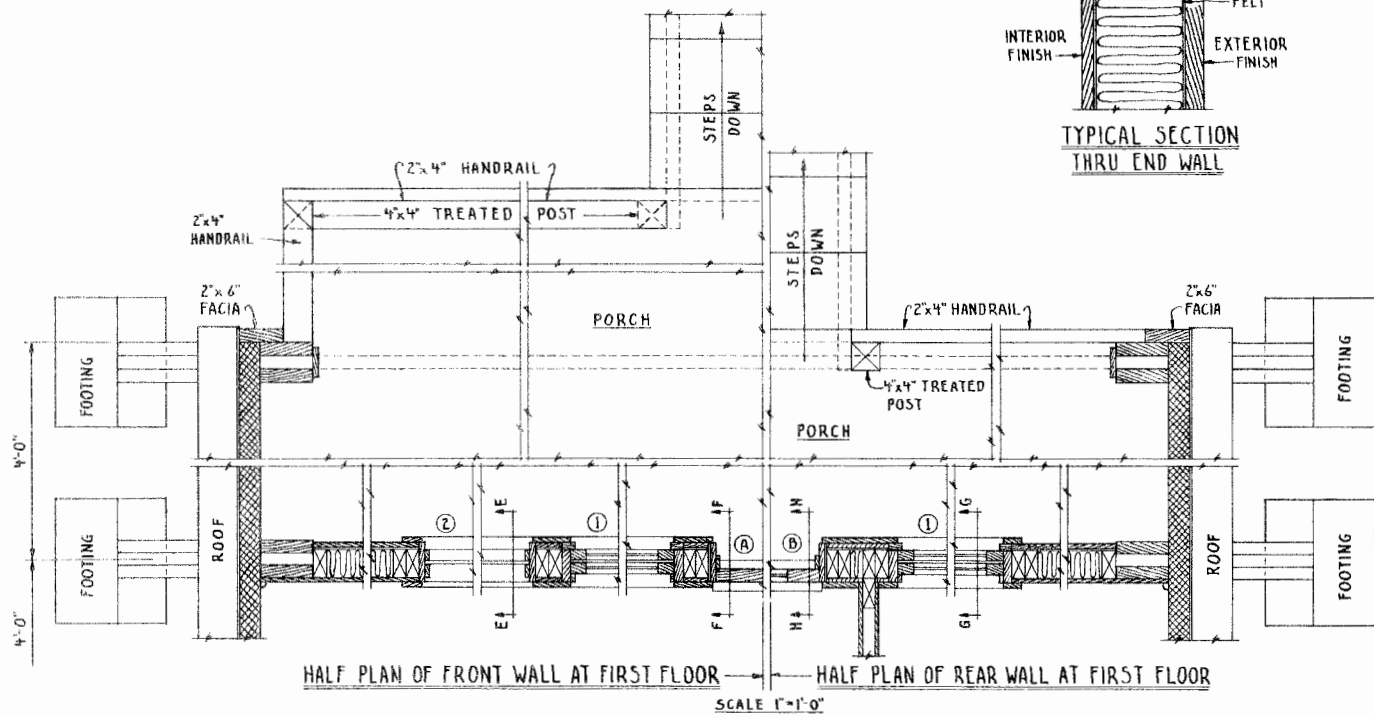
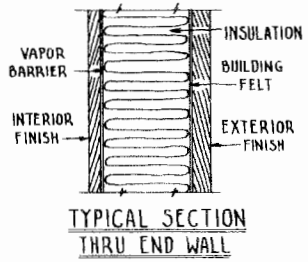
SECTION AT C-C'
 TYPICAL AT RAFTER
 SCALE 1" = 1'-0"



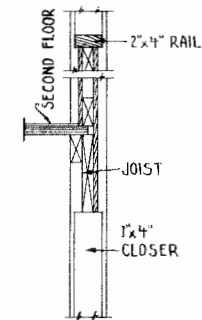
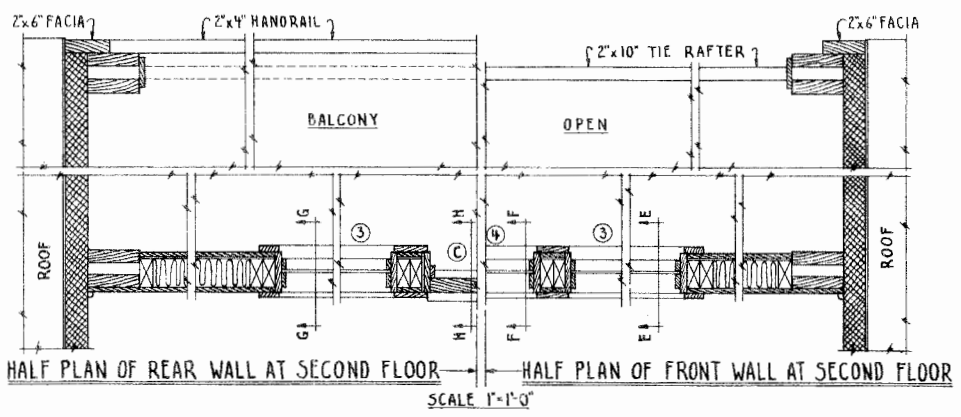
PLAN AT D-D'
 TYPICAL AT RAFTER
 SCALE 1" = 1'-0"



36'-0" A FRAME CABIN



NOTE - PORCH CONSTRUCTION - 2" PLANKING ON 2"x6" FRAMING - 2'-0" O.C.



LSU AgCenter <small>Research & Extension</small>		
36'-0" A' FRAME CABIN		
USDA 1963	EX-5965	SHEET 3 OF 3

Disclaimer

This site makes available conceptual plans that can be helpful in developing building layouts and selecting equipment for various agricultural applications. These plans do not necessarily represent the most current technology or construction codes. They are not construction plans and do not replace the need for competent design assistance in developing safe, legal and well-functioning agricultural building system. The LSU Agriculture Center, the Mid-West Plan Service, the United States Department of Agriculture and none of the cooperating land-grant universities warranty these plans.