

Economic Impact of Forestry and Forest Products

on Louisiana's Sixth Congressional District



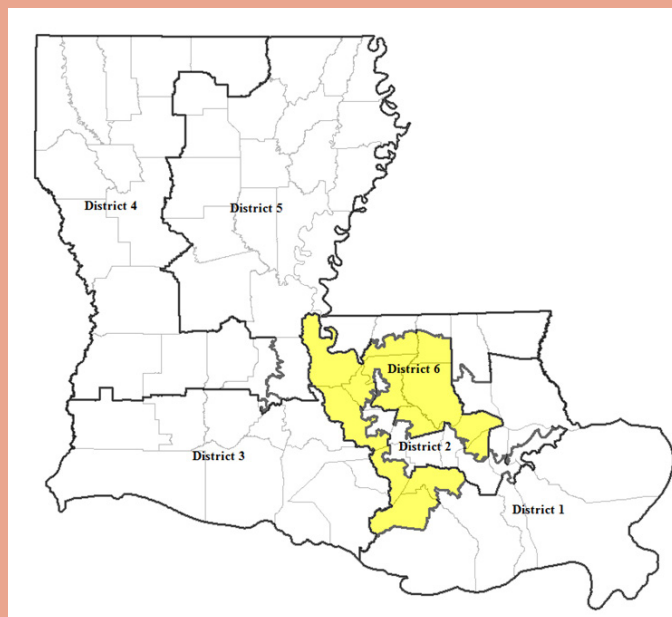
The forestry and forest products industry in Louisiana's 6th Congressional District has a total economic impact amounting to **5,198 jobs and \$320 million in income** during 2012. Forestry and the forest products industry generated an **output of \$1.38 billion** in the district. Total industry output is defined as the value of all goods and services produced in the district. **Value-added amounted to approximately \$570 million.** Value-added represents the creation of new wealth, and is inserted into the economy through payments made to workers, interest, profits and indirect business taxes.

In addition, **the tax impact was estimated to be approximately \$93 million**, with \$64 million in federal and \$29 million in state and local taxes. The forestry and forest products impacts on the economy of Louisiana's Sixth Congressional District are summarized in the right column and detailed in **Table 1**.

These results were obtained using IMpact Analysis for PLANning (IMPLAN), an input-output model. Using input-output analysis to track how the inputs of one sector of the economy are the outputs of other sectors can allow for a greater appreciation of the economic importance of a sector or group of sectors to the overall economy.¹

¹ For more detail on combining the 440 sectors to 17 sectors, please see [The Economic Impact of Forestry and the Forest Products Industry on Louisiana's Congressional Districts, Research Information Sheet #112](#)

Louisiana District 6



Jobs
5,198

Output
\$1.38 billion

Income
\$320 million

Value-Added
\$570 million

Tax Revenue
\$93 million

See Reverse Side for More Details.

Table 1. Impacts from Forest Related Sectors on Employment, Income, Output, and Value-Added in Louisiana's 6th Congressional District (2012).

	Number of jobs	% of District	Income (\$)	% of District	Output (\$)	% of District	Value-Added (\$)	% of District
Direct Impact from Forest-Related Sectors:								
Forestry Services	27	0.01	4,222,320	0.02	10,500,910	0.01		0.00
Logging	265	0.06	11,461,085	0.06	19,524,938	0.02		0.00
Solid Wood Products	709	0.15	30,225,367	0.15	115,114,613	0.13		0.00
Pulp and Paper	1,092	0.24	112,778,387	0.55	745,262,585	0.85		0.00
Wood Furniture	292	0.06	9,524,479	0.05	32,065,044	0.04		0.00
Subtotal	2,385	0.52	168,211,637	0.82	922,468,089	1.05	343,668,961	0.94
Indirect and Induced Impacts on Sectors:								
Forestry Sector	286	0.06	15,637,491	0.08	39,915,707	0.05	11,749,234	0.03
Non-Forestry	2,527	0.55	135,986,774	0.67	421,037,550	0.48	214,817,745	0.59
Subtotal	2,813	0.61	151,624,265	0.74	460,953,257	0.52	226,566,979	0.62
Total Impact	5,198	1.13	319,835,903	1.57	1,383,421,346	1.57	570,235,940	1.56
Rest of District	454,915	98.87	20,103,695,915	98.43	86,622,354,040	98.43	36,087,977,449	98.44
Total in District	460,113	100	20,423,531,818	100.00	88,005,775,386	100.00	36,658,213,389	100.00

Glossary:

Number of jobs: Number of full and part-time employment in the chosen industries and those created in the rest of the economy by the chosen industries.

Income: Includes wages, salaries, and benefits of employees as well as income for self-employed individuals.

Output: Represents the value of industry production.

Value-added: The difference between an industry's total output and the cost of its intermediate inputs.

Direct effects: Refer to the sectors own production, value-added, employment, and labor incomes.

This project partially supported with funding provided by the USDA National Institute of Food and Agriculture, through the Renewable Resources Extension Act, a McIntire-Stennis project.



Visit our website: www.LSUAgCenter.com

William B. Richardson, LSU Vice President for Agriculture
 Louisiana State University Agricultural Center
 Louisiana Agricultural Experiment Station
 Louisiana Cooperative Extension Service
 LSU College of Agriculture

Pub. 3367-F (online only) 03/15

The LSU AgCenter and LSU provide equal opportunities in programs and employment.