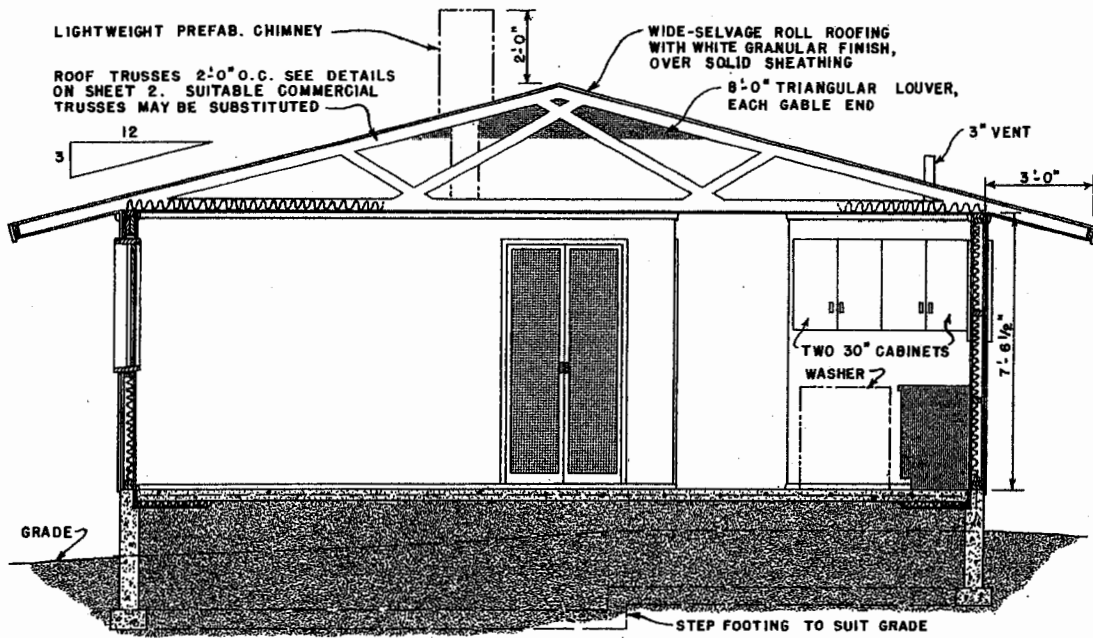


PERSPECTIVE



SECTION A-A
SCALE: 3/8" = 1'-0"

LIGHTWEIGHT PREFAB. CHIMNEY
ROOF TRUSSES 2'-0" O.C. SEE DETAILS ON SHEET 2. SUITABLE COMMERCIAL TRUSSES MAY BE SUBSTITUTED

WIDE-SELVAGE ROLL ROOFING WITH WHITE GRANULAR FINISH, OVER SOLID SHEATHING

8'-0" TRIANGULAR LOUVER, EACH GABLE END

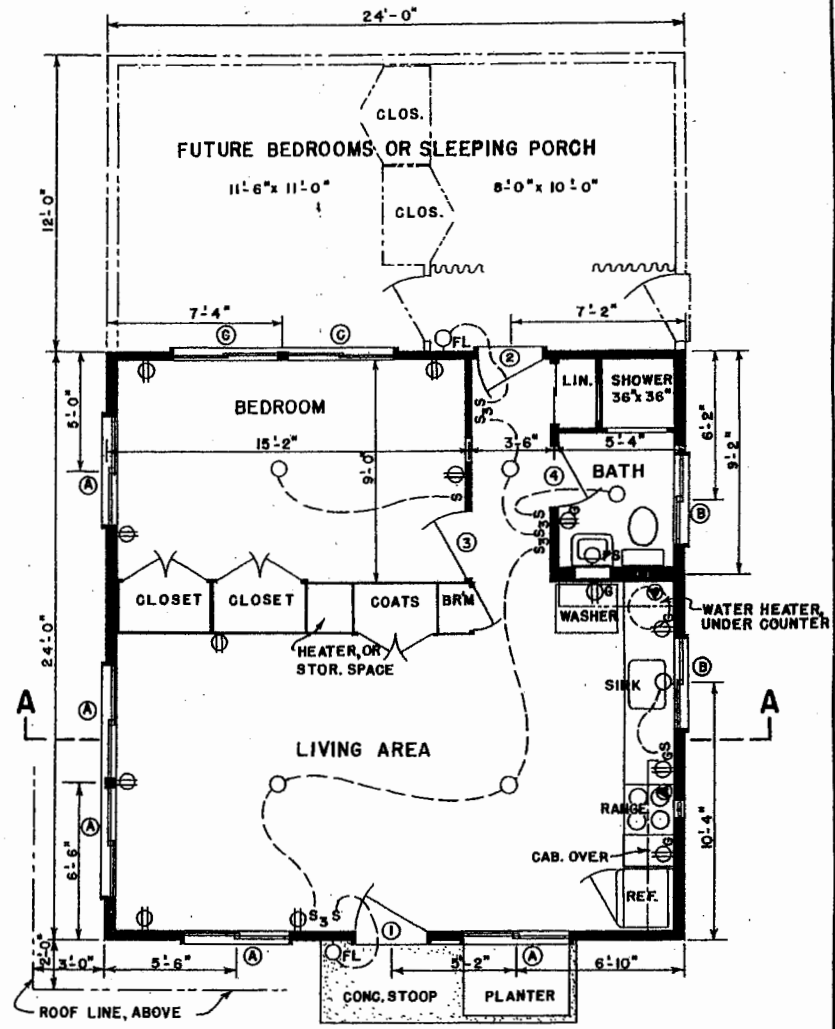
3" VENT

TWO 30" CABINETS
WASHER

STEP FOOTING TO SUIT GRADE

FOR ECONOMY AND EASE OF CONSTRUCTION, APPLY THE INTERIOR WALL, CEILING AND FLOOR FINISH BEFORE ERECTING ANY PARTITIONS. THIS WILL ALSO PERMIT FUTURE REMOVAL OR MOVING OF ANY PARTITIONS EXCEPT THOSE WHICH CONTAIN PLUMBING.

THE FINISH GRADE SHOULD SLOPE AWAY FROM THE CABIN ON ALL SIDES.



PLAN
SCALE: 1/4" = 1'-0"

- WINDOW SCHEDULE**
- Ⓐ... 4'-5" WIDE x 3'-5" HIGH
 - Ⓑ... 3'-7" " x 2'-5" "
 - Ⓒ... 4'-5" " x 1'-9" "
- PACKAGED SLIDING WINDOWS.
TYPE AND TRIM TO BE AS SELECTED BY OWNER.

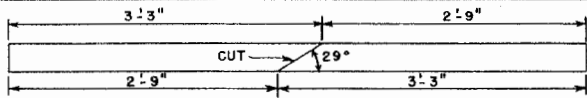
- DOOR SCHEDULE**
- ①... 3'-0" x 6'-0" EXTERIOR
 - ②... 2'-8" x 6'-8" "
 - ③... 2'-8" x 8'-0" INTERIOR
 - ④... 2'-6" x 6'-0" "

- ELECTRICAL SYMBOLS**
- S.....SWITCH
 - S₃.....THREE-WAY SWITCH
 -CEILING FIXTURE, RECESSED
 - PS.....WALL FIXTURE, PULL SWITCH
 - FL.....FLOODLIGHT
 - Ⓢ.....DUPLEX CONVENIENCE OUTLET
 - ⓈG.....DUP. CONV. OUTLET WITH GROUND
 - Ⓐ.....230 VOLT, RANGE & WATER HEATER

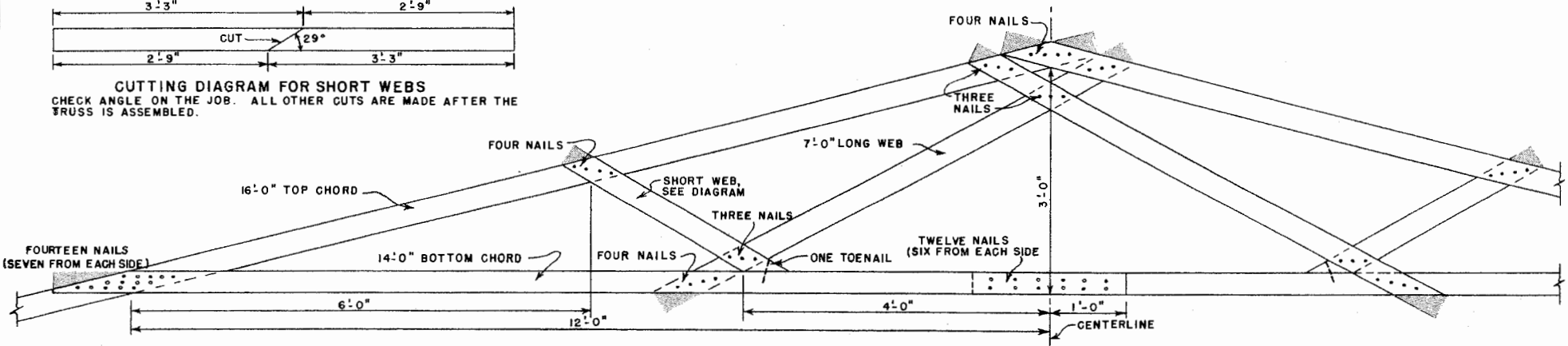
LSU
AgCenter
Research & Extension

CABIN

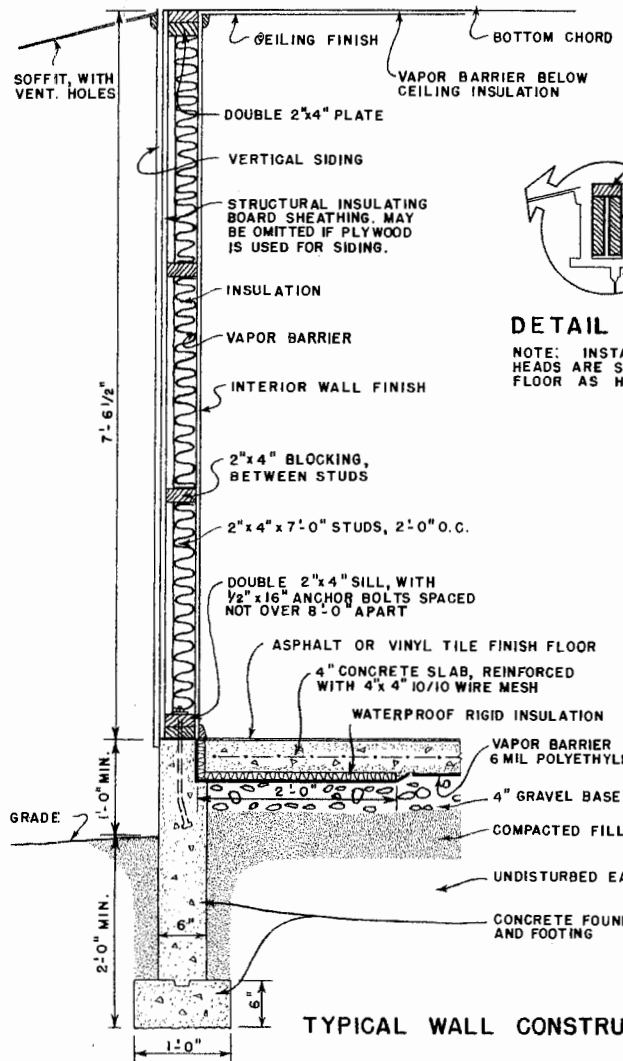
USDA '61 EX. 5928 SHEET 1 OF 3



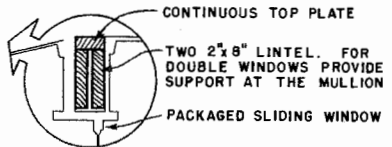
CUTTING DIAGRAM FOR SHORT WEBS
 CHECK ANGLE ON THE JOB. ALL OTHER CUTS ARE MADE AFTER THE TRUSS IS ASSEMBLED.



LAYOUT & FASTENING DETAILS

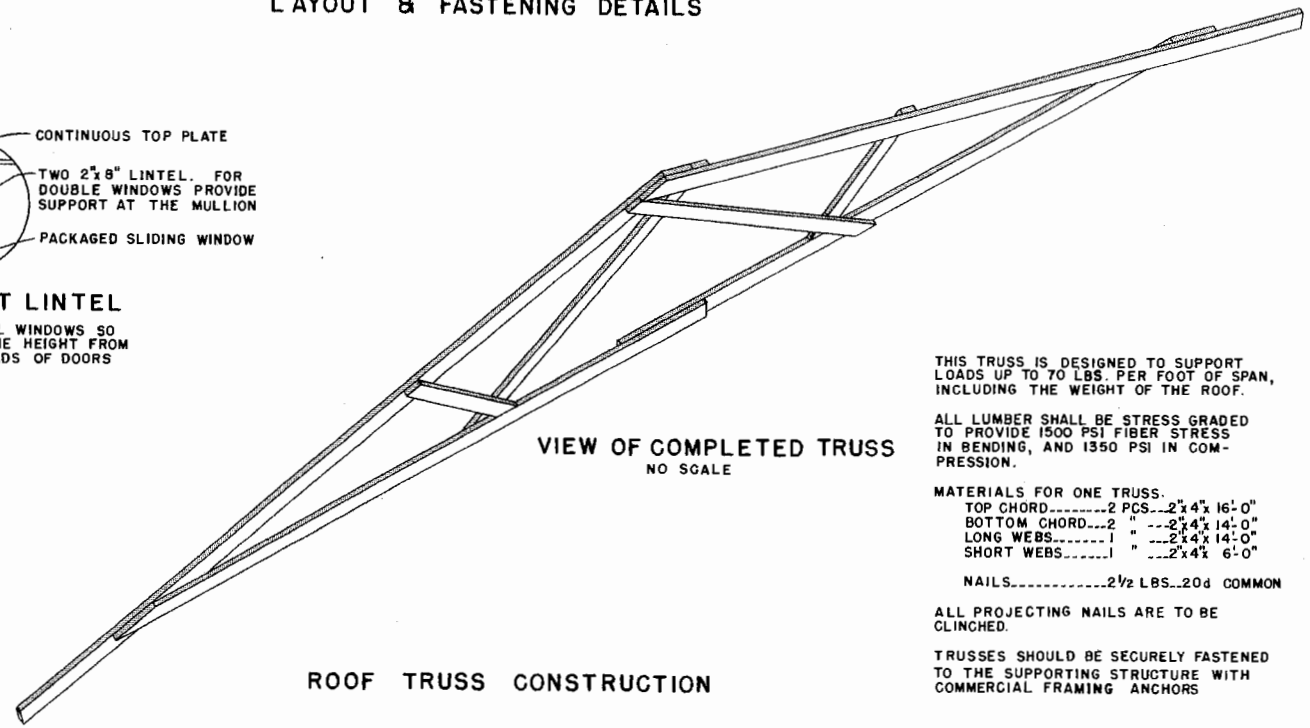


TYPICAL WALL CONSTRUCTION



DETAIL AT LINTEL

NOTE: INSTALL WINDOWS SO HEADS ARE SAME HEIGHT FROM FLOOR AS HEADS OF DOORS



ROOF TRUSS CONSTRUCTION

THIS TRUSS IS DESIGNED TO SUPPORT LOADS UP TO 70 LBS. PER FOOT OF SPAN, INCLUDING THE WEIGHT OF THE ROOF.

ALL LUMBER SHALL BE STRESS GRADED TO PROVIDE 1500 PSI FIBER STRESS IN BENDING, AND 1350 PSI IN COMPRESSION.

MATERIALS FOR ONE TRUSS.

TOP CHORD	2 PCS	2"x4"x16'-0"
BOTTOM CHORD	2 "	2"x4"x14'-0"
LONG WEBS	1 "	2"x4"x14'-0"
SHORT WEBS	1 "	2"x4"x6'-0"

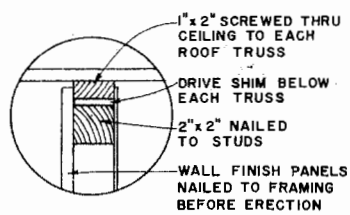
NAILS.....2 1/2 LBS.-20d COMMON

ALL PROJECTING NAILS ARE TO BE CLINCHED.

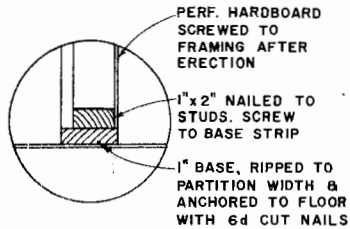
TRUSSES SHOULD BE SECURELY FASTENED TO THE SUPPORTING STRUCTURE WITH COMMERCIAL FRAMING ANCHORS

SCALE: 1" = 1'-0", EXCEPT AS NOTED.

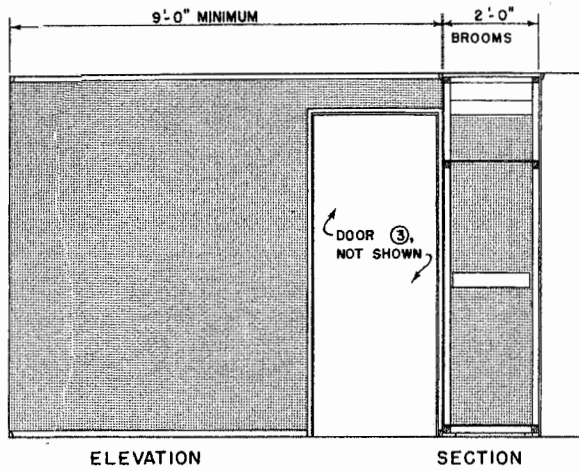
LSU AgCenter Research & Extension			
CABIN			
USDA	'61	EX. 5928	SHEET 2 OF 3



HEAD

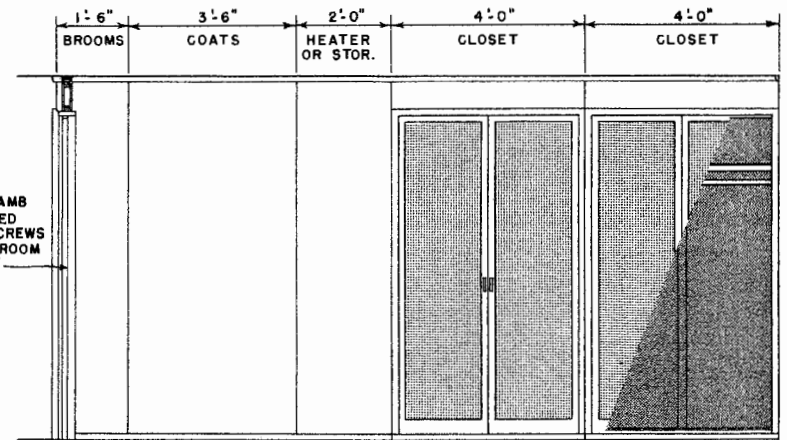


BASE

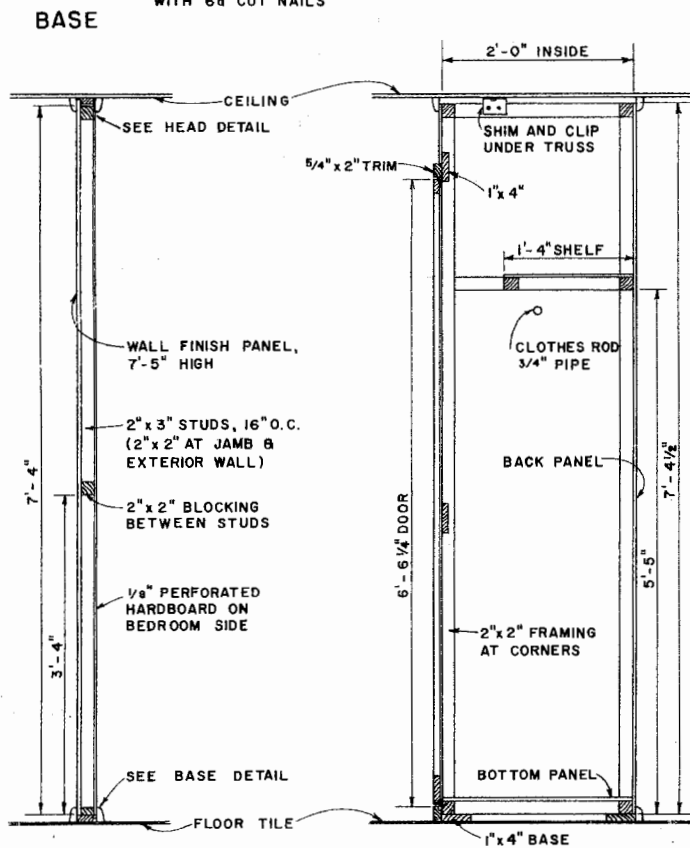


ELEVATION
SECTION
PARTITION

SCALE: 1/2" = 1'-0"



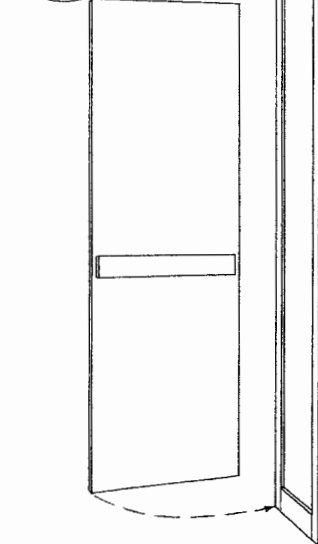
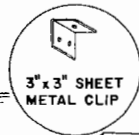
ELEVATION, CUT AWAY TO SHOW INTERIOR
STORAGE PARTITION



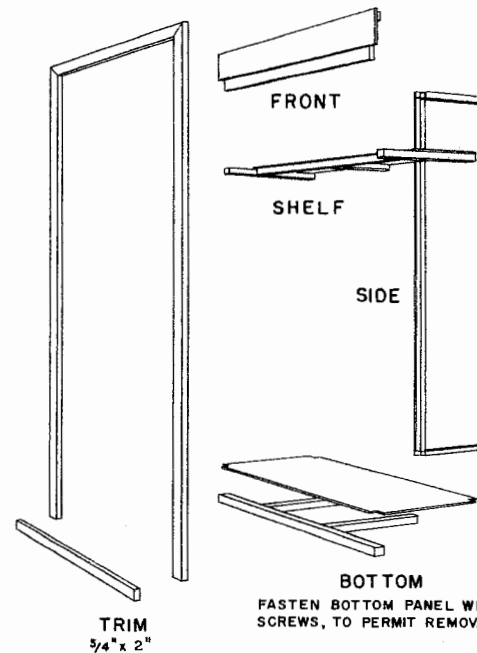
PARTITION
STORAGE PARTITION

TYPICAL CROSS SECTIONS

SCALE: 1" = 1'-0"



DOORS
1/8" PERF. HARDBOARD ON
1" x 2" AND 1" x 4" FRAME



EXPLODED VIEW OF TYPICAL CLOSET UNIT
SHOWING COMPONENTS READY FOR ASSEMBLY

THESE BEDROOM PARTITIONS ARE DESIGNED TO PERMIT FUTURE REARRANGEMENT OR REMOVAL.

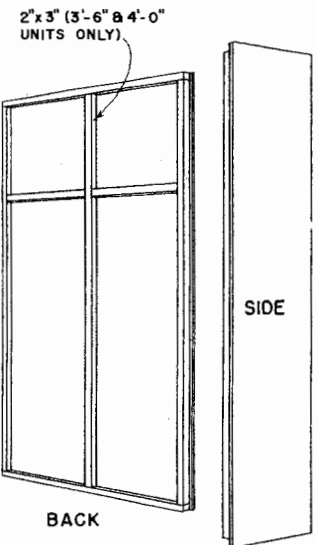
THE STORAGE PARTITION IS MADE UP OF INDIVIDUAL CLOSET UNITS WHICH ARE SUPPORTED ON CONTINUOUS 1"x4" BOARDS WHICH SERVE TO PROTECT THE FINISH FLOOR TILE. JOINTS AT THE FLOOR AND CEILING ARE COVERED BY TRIM. USE OF VERTICALLY GROOVED PLYWOOD OR HARDBOARD PANELS WILL AID IN CONCEALING THE JOINTS BETWEEN UNITS.

ALL FRAMING IS 2"x2" EXCEPT AS NOTED.

CLOSET DOORS SHOULD HAVE MAGNETIC LATCHES AT TOP AND BOTTOM.

PERFORATED HARDBOARD IS USED ON CLOSET DOORS FOR VENTILATION AND ON THE OTHER PARTITION FOR TEXTURE AND TO PERMIT HANGING LIGHT SHELVES, ETC., ON COMMERCIAL BRACKETS.

CONSTRUCTION OF HEATER ENCLOSURE WILL DEPEND ON THE TYPE OF HEATING UNIT TO BE INSTALLED.



2" x 3" (3'-6" & 4'-0")
UNITS ONLY.



CABIN

Disclaimer

This site makes available conceptual plans that can be helpful in developing building layouts and selecting equipment for various agricultural applications. These plans do not necessarily represent the most current technology or construction codes. They are not construction plans and do not replace the need for competent design assistance in developing safe, legal and well-functioning agricultural building system. The LSU Agriculture Center, the Mid-West Plan Service, the United States Department of Agriculture and none of the cooperating land-grant universities warranty these plans.