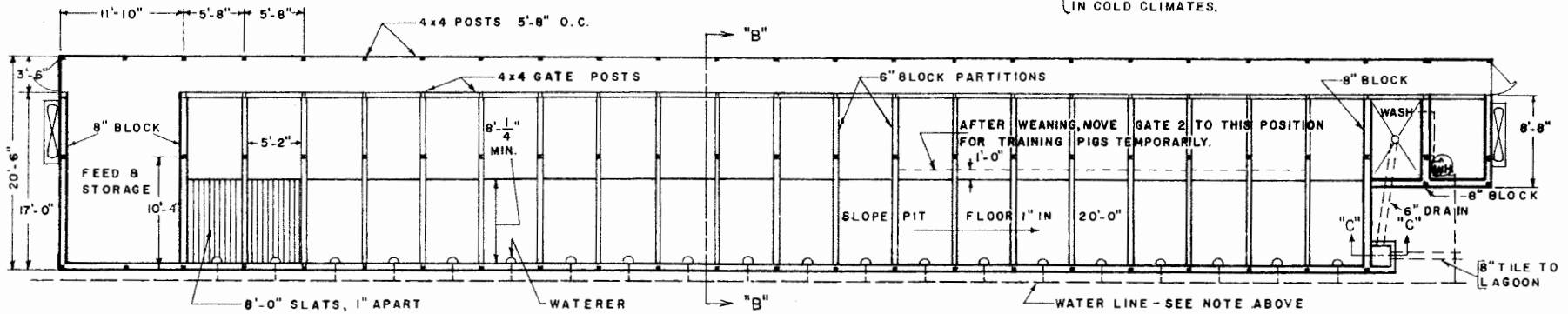


FLOOR PLAN - FOR FARROWING OR FEEDER PIG PRODUCTION ONLY

SCALE: $\frac{1}{8}'' = 1'-0''$

BURY WATER LINE AT LEAST 12".
SLOPE TO DRAIN & PROVIDE CUT-OFF
DRAIN VALVE AT LOWER END. PRO-
VIDE HOSE CONNECTIONS 50 FT. APART.
BURY BELOW FROST LINE AND PROVIDE INSULATION
IN COLD CLIMATES.

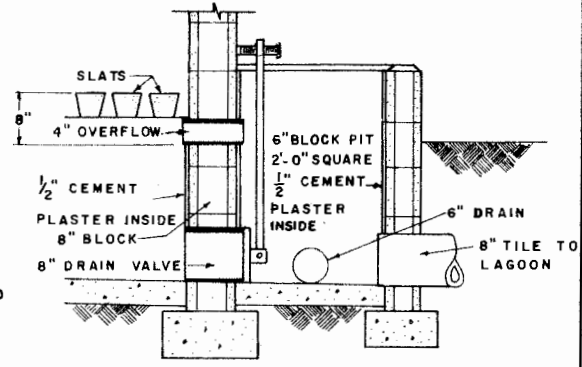
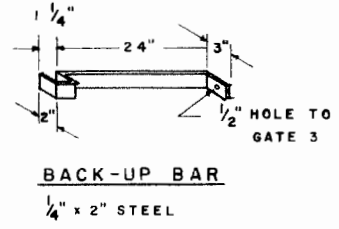
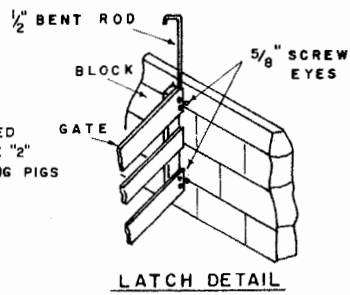
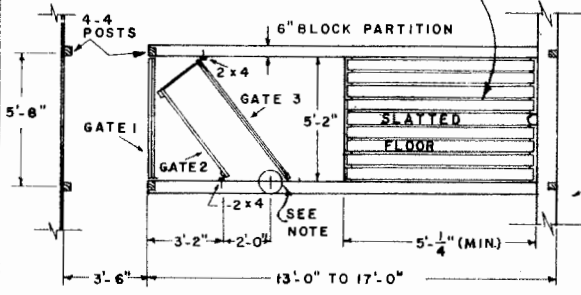


FLOOR PLAN - FOR FARROW TO FINISH

SCALE: $\frac{1}{8}'' = 1'-0''$

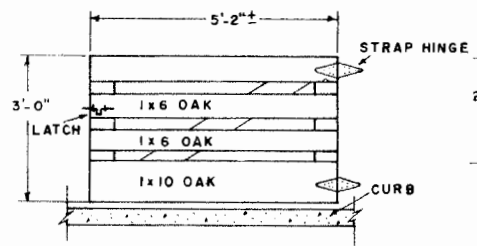
FLOOR PLAN - TYPICAL PEN

COVER SLATS OR PEN PIGS
AWAY FROM SLATS FOR APPROXIMATELY
ONE WEEK AFTER FARROWING

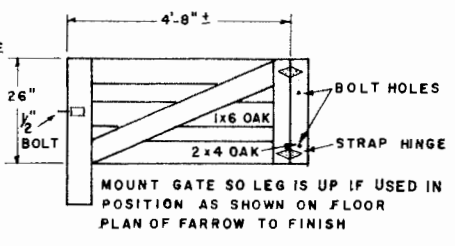


SECTION "C-C"

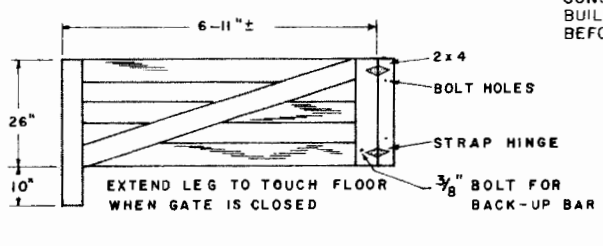
NOTE: SCALE: $\frac{3}{4}'' = 1'-0''$
CONSULT LOCAL HEALTH AND
BUILDING CODE AUTHORITIES
BEFORE STARTING CONSTRUCTION
BASED ON USDA PLAN NO. 6073



GATE 1



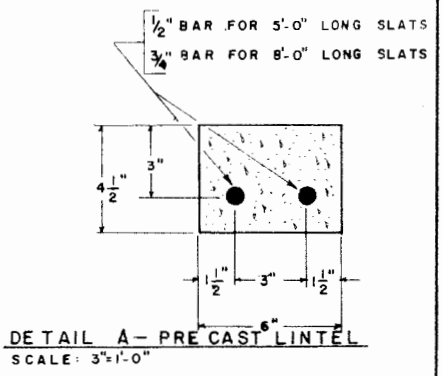
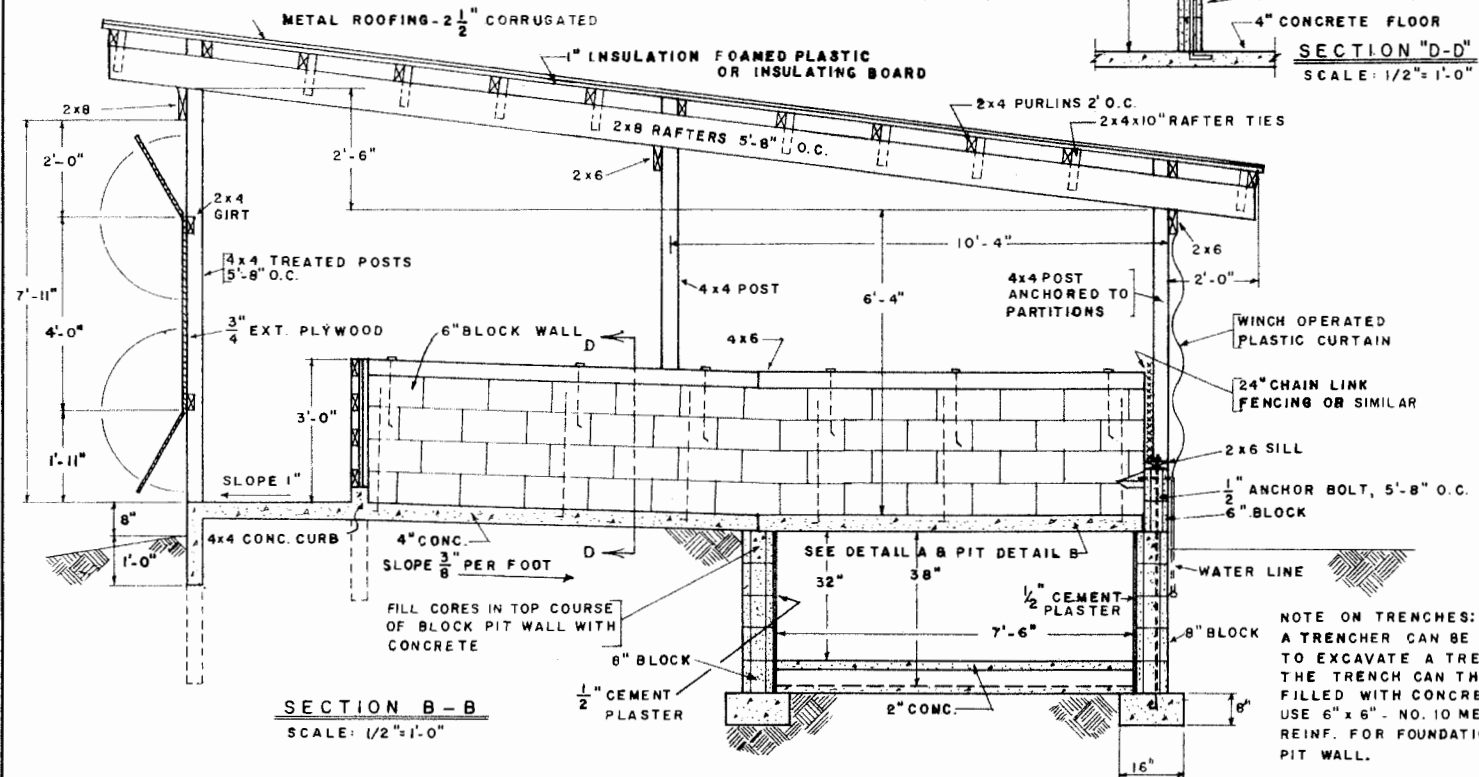
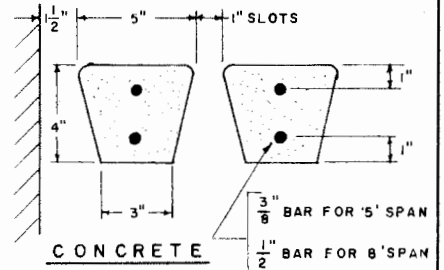
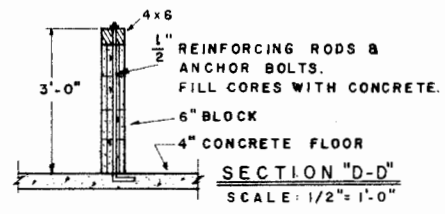
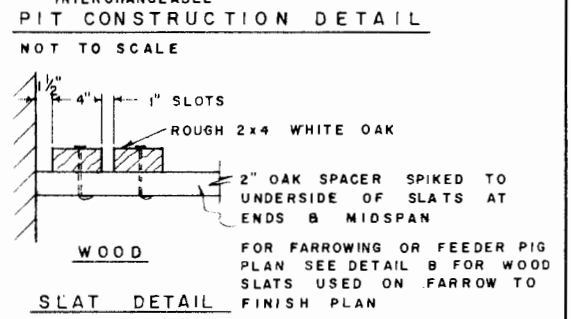
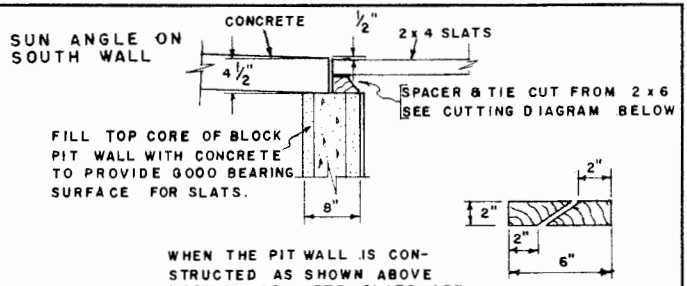
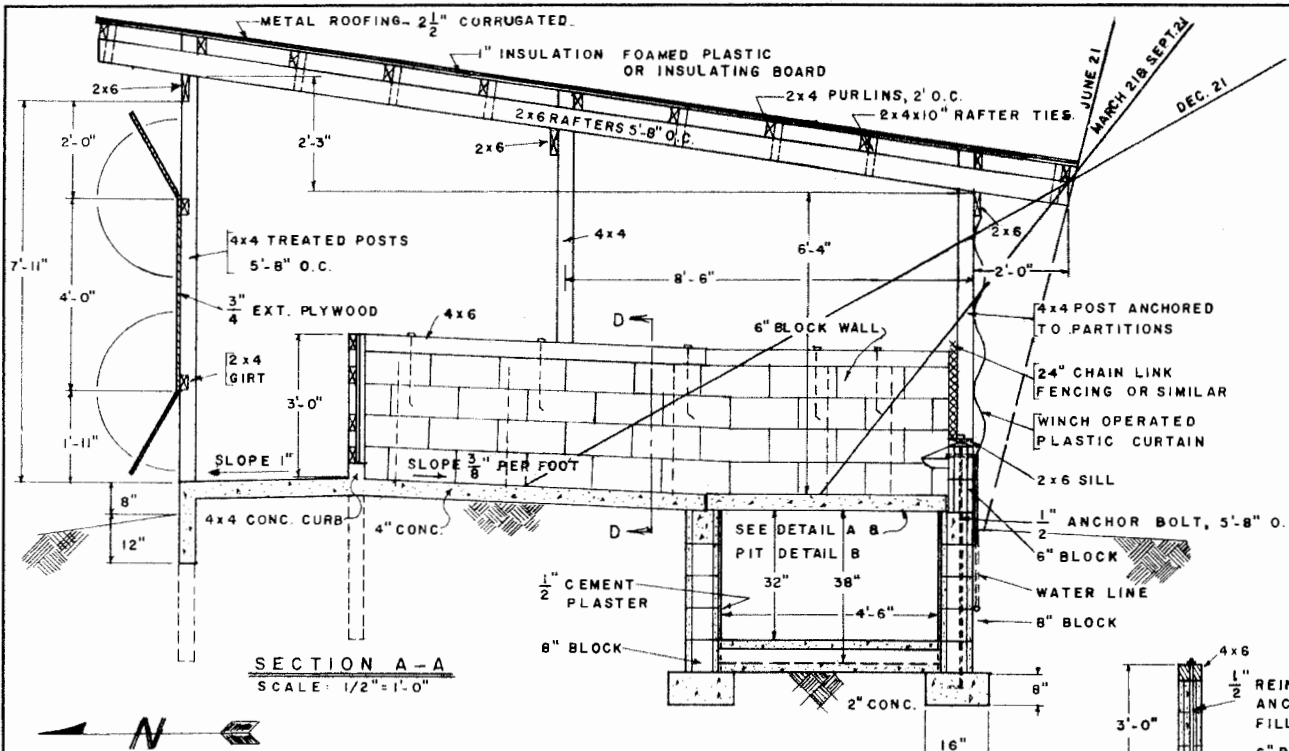
GATE 2



GATE 3



**HOG HOUSES-FARROWING
FARROW TO FINISH**

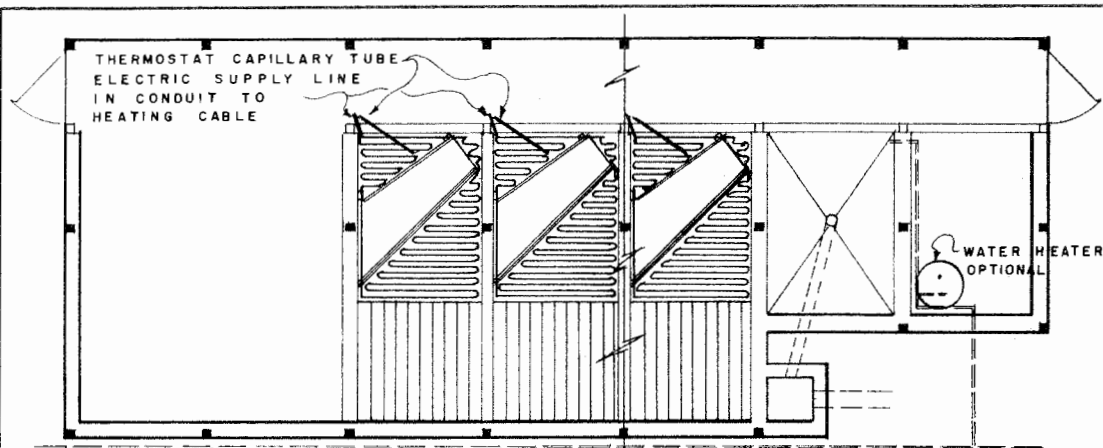


NOTE ON TRENCHES:
 A TRENCHER CAN BE USED TO EXCAVATE A TRENCH. THE TRENCH CAN THEN BE FILLED WITH CONCRETE. USE 6" x 6" - NO. 10 MESH REINF. FOR FOUNDATION PIT WALL.

LSU
AgCenter
 Research & Extension

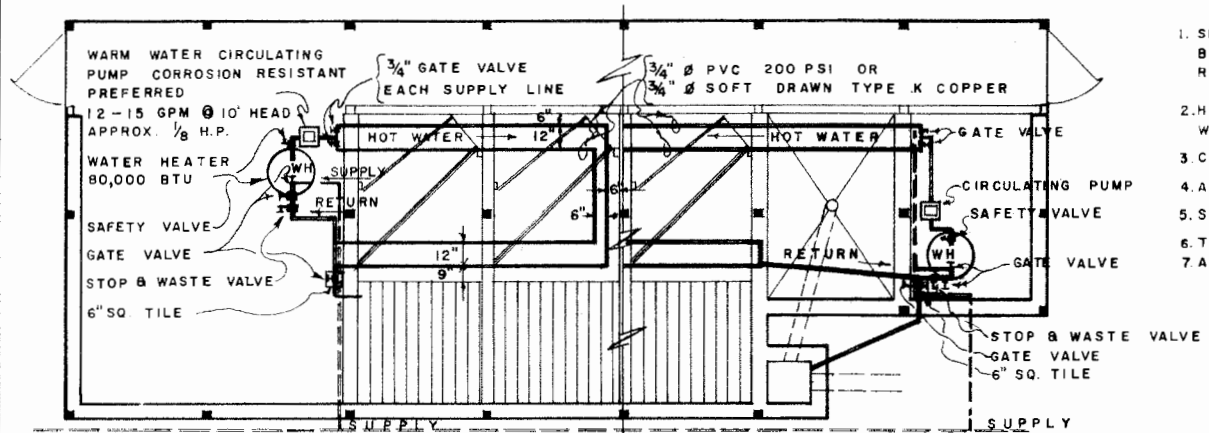
HOG HOUSES-FARROWING FARROW TO FINISH

MISS. '73	6157	SHEET 2 OF 3
-----------	------	--------------



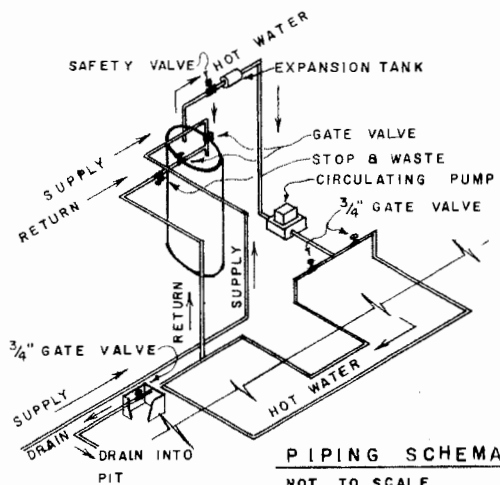
ELECTRIC HEATING CABLE SYSTEM

SCALE: $\frac{1}{4}'' = 1'-0''$



WARM WATER CIRCULATING SYSTEM

SCALE: $\frac{1}{4}'' = 1'-0''$



PIPING SCHEMATIC

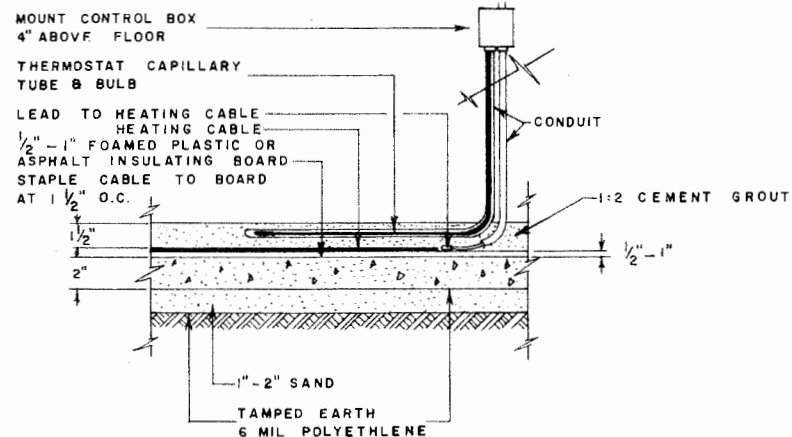
NOT TO SCALE

NOTES

1. OUTLETS FOR HEAT LAMPS SHOULD BE INSTALLED REGARDLESS IF THIS SYSTEM OR THE ELECTRIC HEATING CABLE SYSTEM IS USED.
2. CHECK SYSTEM WITH 150 P.S.I. AIR 24 HRS. BEFORE PLACING GROUT.
3. REGULATE TEMPERATURE WITH WATER HEATER THERMOSTAT.

PIPING SYMBOLS

- SAFETY VALVE
- GATE VALVE
- STOP & WASTE VALVE
- COLD WATER SUPPLY
- HOT WATER
- WARM WATER CIRCULATING PUMP

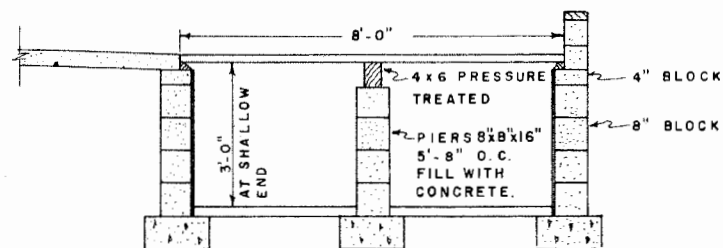


ELECTRIC HEATING CABLE SYSTEM *

NOT TO SCALE

- NOTES:
1. SEVERAL CRATE UNITS CAN BE CONTROLLED BY THE SAME THERMOSTAT; NOT TO EXCEED THE RATED HEATING LOAD; SWITCH CONTROL EACH DEN
 2. HEAT LAMPS WILL BE NEEDED IN EXTREME COLD WEATHER IN ADDITION TO THE HEATING CABLE
 3. CHECK CONTINUITY OF CABLE BEFORE PLACING GROUT
 4. AVOID STRIKING HEATING CABLE.
 5. SET THERMOSTAT AT DESIRED TEMPERATURE
 6. THIS SYSTEM CAN BE USED IN A FINISHING BLDG.
 7. A CUT OFF SWITCH SHOULD BE LOCATED AT EACH PEN

* ADAPTED FROM TVA LEAFLET



DETAIL B

SCALE: $\frac{1}{2}'' = 1'-0''$

PIT DETAIL USING WOOD SLATS



**HOG HOUSES—FARROWING
FARROW TO FINISH**

MISS. '73 6157 SHEET 3 OF 3

Disclaimer

This site makes available conceptual plans that can be helpful in developing building layouts and selecting equipment for various agricultural applications. These plans do not necessarily represent the most current technology or construction codes. They are not construction plans and do not replace the need for competent design assistance in developing safe, legal and well-functioning agricultural building system. The LSU Agriculture Center, the Mid-West Plan Service, the United States Department of Agriculture and none of the cooperating land-grant universities warranty these plans.