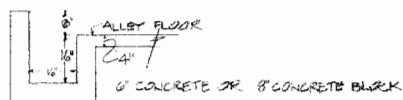
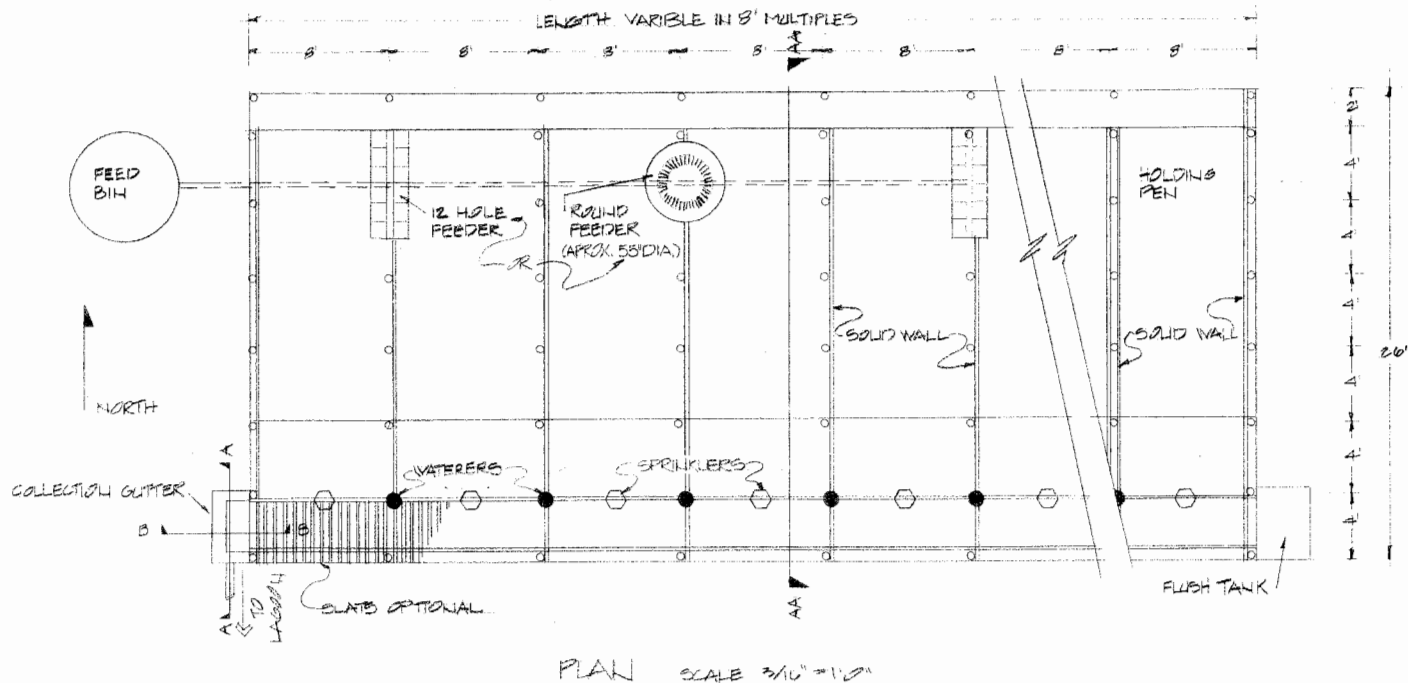


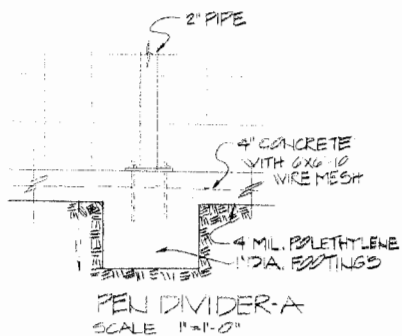
SECTION A
SCALE - 3/8" = 1'-0"
6" CONCRETE WALLS & FLOOR OR 8" BLOCK
COATED WITH 1/2" CEMENT PLASTER OR "BOUR WALL"



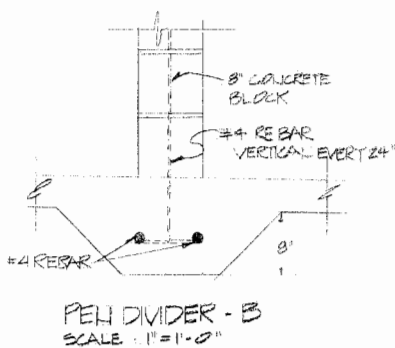
SECTION - B
SCALE - 1/2" = 1'-0"
COLLECTION GUTTER DETAILS



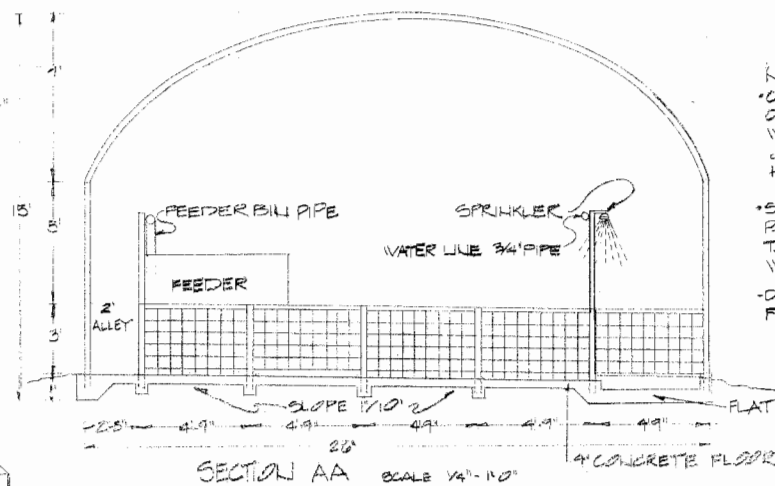
PLAN SCALE 3/16" = 1'-0"



PEN DIVIDER - A
SCALE 1" = 1'-0"

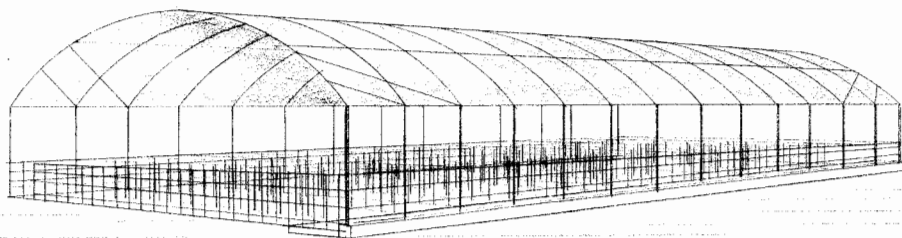


PEN DIVIDER - B
SCALE 1" = 1'-0"



SECTION AA SCALE 1/4" = 1'-0"

- NOTES:
- COVER MATERIAL - 10 TO 20 MIL. GRADE PLASTIC COVERED WOVEN FIBER (NON-TEARING) ORIGINAL USE AS GREENHOUSE COVER
 - SAME MATERIAL OR 4 MIL. POLY. COVER MAY BE ADDED TO NORTH WALL DURING WINTER
 - DO NOT HANG EQUIPMENT FROM BOWS



PERSPECTIVE

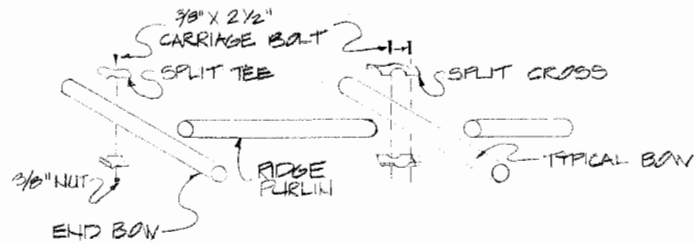


LOW COST FINISHING /GESTATION BUILDING

ENGINEER J.W.B. SCALE AS SHOWN

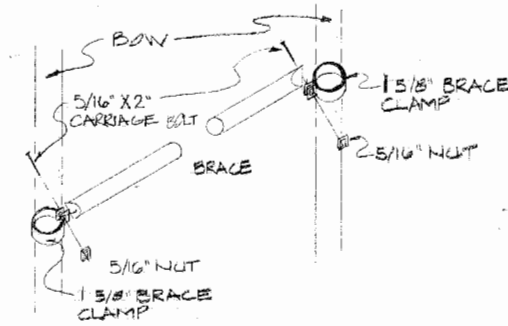
DRAWN BY B.M.D. SHEET 1 OF 2

TRACED BY DATE 1/10/81 NO. 02-12

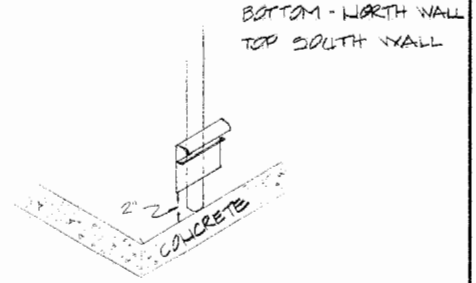


IMPORTANT: KEEP CENTER RIM OF PURLIN VERTICALLY PLUMB AT ALL TIMES. THIS CAN BE ADJUSTED BY PUSHING OR PULLING OUT PURLIN WITHIN THE CLAMP.

RIDGE PURLIN NO SCALE



BRACES NO SCALE

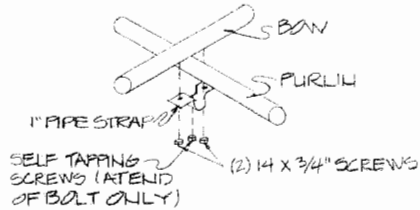


SINGLE BASE POLY LATCH

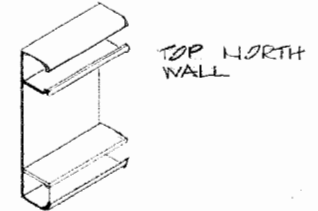
FOR USE IN ATTACHING BASE POLY ON SIDE WALLS, USED ON CORNER POSTS FOR ATTACHING SIDE POLY

NOTES ON STEEL:

- POST 2\"/>
- BOW 1 5/8\"/>
- RIDGE PURLIN 1 5/8\"/>
- SIDE PURLIN 1 3/8\"/>
- GALVANIZE - 2 OZ./SQ. FT.

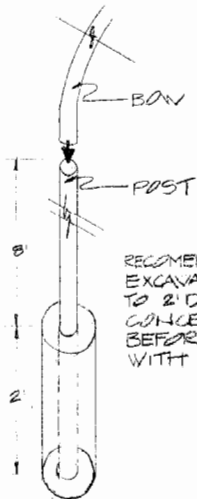


PURLIN NO SCALE



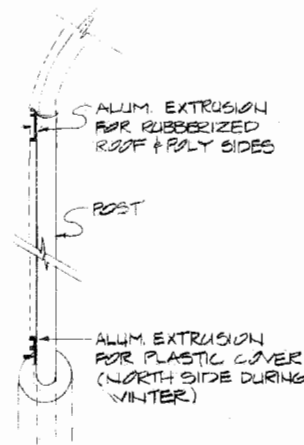
DOUBLE POLY LATCH

USED AT SIDE EAVE, AT TOP OF POST, FOR ATTACHING POLY FOR ROOF & SIDES

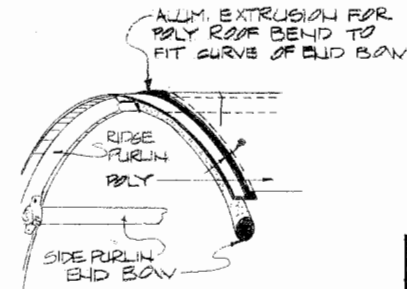


FOOTING DETAIL WITHOUT SLAB SCALE: 3/4\"/>

RECOMMENDED PRACTICE: EXCAVATE 6\"/>



COVERING DETAIL SCALE 3/4\"/>



COVERING AT ENDS NO SCALE



LOW COST FINISHING/RESTAURATION BUILDING

ENGINEER J.M.B	SCALE AS SHOWN
DRAWN BY B.M.D.	SHEET 2 OF 2
TRACED BY	DATE 1/16/81 NOB2-12

Disclaimer

This site makes available conceptual plans that can be helpful in developing building layouts and selecting equipment for various agricultural applications. These plans do not necessarily represent the most current technology or construction codes. They are not construction plans and do not replace the need for competent design assistance in developing safe, legal and well-functioning agricultural building system. The LSU Agriculture Center, the Mid-West Plan Service, the United States Department of Agriculture and none of the cooperating land-grant universities warranty these plans.