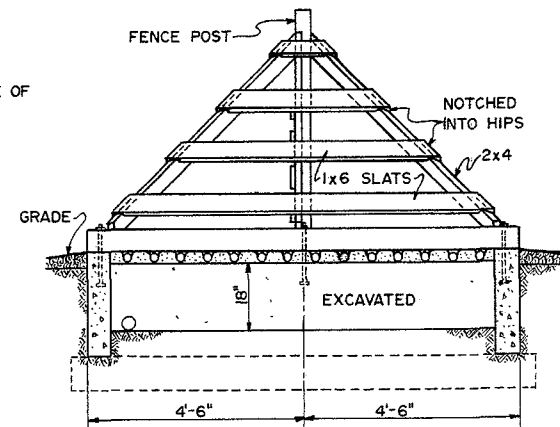
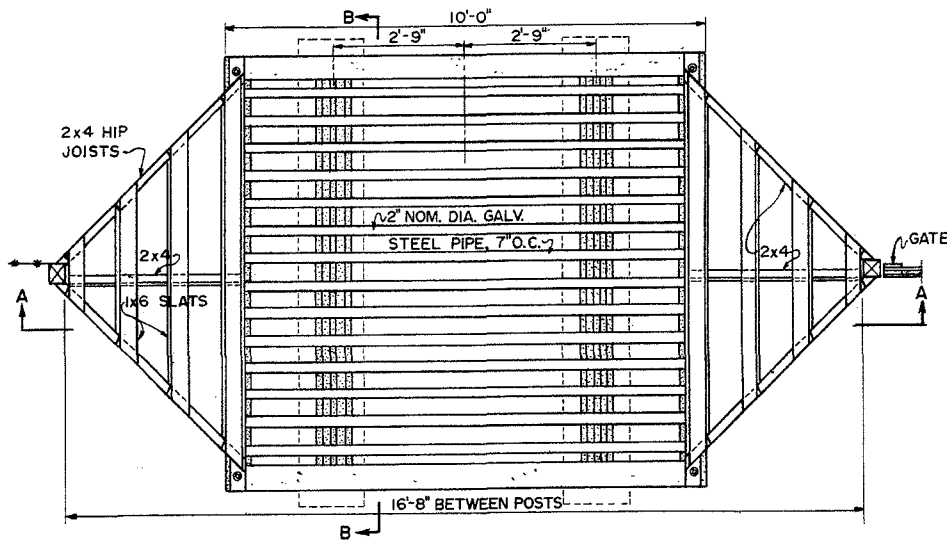


SECTION A-A



SECTION B-B



PLAN

**BILL OF MATERIALS**  
CONCRETE AND STEEL

LUMBER		
FRAMING:	1-PCS	2x4x12'-0"
	2- "	2x4x14'-0"
SLATS:	6- "	1x6x12'-0"
GUARD RAILS:	2- "	4x6x9'-0"
CONCRETE:	2 3/4	CU. YDS. (1:3:5 MIXTURE)
CEMENT:	13	SACKS
SAND:	1.4	CU. YDS.
AGGREGATE:	2.35	CU. YDS.
MISCELLANEOUS		
PIPES:	14-PCS,	2" NOM. DIA. EXTRA STRONG GALV. STEEL PIPE OR RAILS 10'-0" LONG
ANCHOR BOLTS:	6- 1/2"	φ x 16"
REINF. RODS:	4- 1/2"	φ x 9'-0"

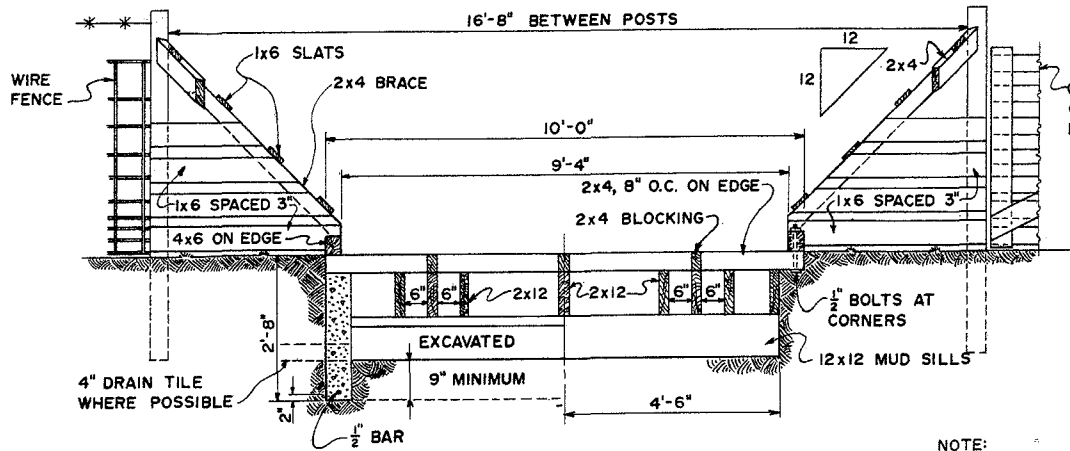
NOTE A WIDE GATE ADJACENT TO GUARD IS SUGGESTED FOR PASSAGE OF EXTRA WIDE EQUIPMENT AND LIVESTOCK.  
ALL WOOD TO BE TREATED WITH PRESERVATIVE.



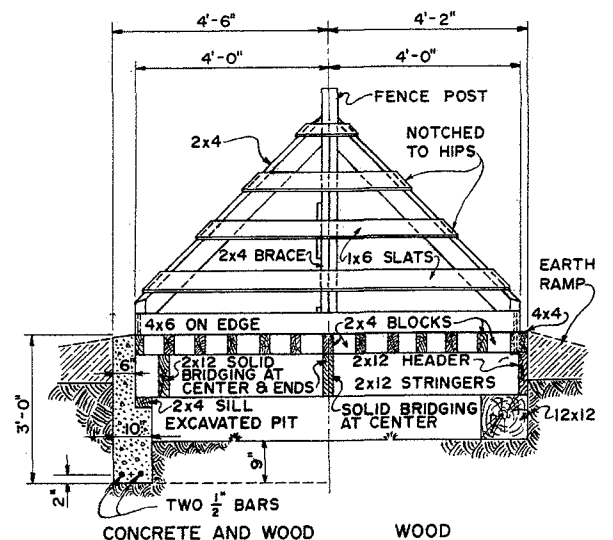
**CATTLE GUARDS**

USDA '68 EX. 6051 SHEET 1 OF 2

SCALE: 1/2" = 1'-0"



SECTION A-A



SECTION B-B

NOTE:  
SECTION A-A SHOWS GUARD FLOOR  
BUILT LEVEL WITH GRADE.  
SECTION B-B SHOWS GUARD FLOOR  
RAISED ABOVE GRADE.

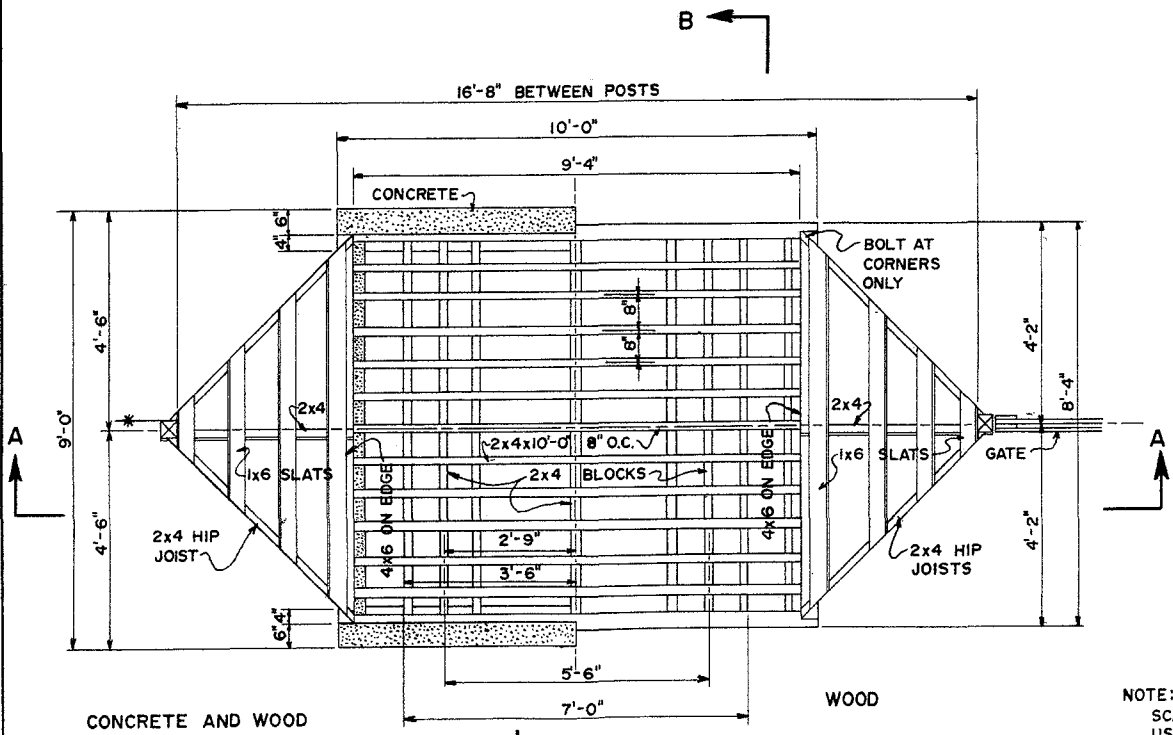
BILLS OF MATERIAL

CONCRETE AND WOOD

- LUMBER
- FENCE POSTS: 2-PCS 4x4x7'-0"
- FRAMING: 3-PCS 2x12x10'-0"  
7-PCS 2x12x8'-0"  
13-PCS 2x4x10'-0"  
2-PCS 2x4x9'-0"  
3-PCS 2x4x8'-0"  
6-PCS 2x4x6'-0"  
9-PCS 1x6x8'-0"
- SLATS: 2-PCS 4x6x8'-0"
- GUARD RAILS: 2 1/2 CU. YDS.  
(1:3:5 MIXTURE)
- CEMENT: 12 SACKS
- SAND: 1.25 CU. YDS.
- AGGREGATE: 2.13 CU. YDS.
- MISCELLANEOUS
- ANCHOR BOLTS: FOUR 1/2" x 12" GALV.
- REINF RODS: FOUR 1/2" x 9'-9"  
TWO 1/2" x 8'-9"

WOOD

- LUMBER
- FENCE POSTS: 2-PCS 4x4x7'-0"
- FRAMING: 2-PCS 12x12x9'-0"  
2-PCS 4x4x10'-0"  
3-PCS 2x12x10'-0"  
9-PCS 2x12x8'-0"  
11-PCS 2x4x10'-0"  
3-PCS 2x4x8'-0"  
6-PCS 2x4x6'-0"  
9-PCS 1x6x8'-0"
- SLATS: 2-PCS 4x6x8'-0"
- GUARD RAILS: 2-PCS 4x6x8'-0"
- MISCELLANEOUS
- ANCHOR BOLTS: FOUR 1/2" x 12" GALV.



PLAN

NOTE:  
SCALE: 1/8" = 1'-0"  
USE ROUGH-SAWN LUMBER.  
ALL WOOD IS TO BE PRESSURE-TREATED  
WITH PRESERVATIVE.



CATTLE GUARDS

## Disclaimer

This site makes available conceptual plans that can be helpful in developing building layouts and selecting equipment for various agricultural applications. These plans do not necessarily represent the most current technology or construction codes. They are not construction plans and do not replace the need for competent design assistance in developing safe, legal and well-functioning agricultural building system. The LSU Agriculture Center, the Mid-West Plan Service, the United States Department of Agriculture and none of the cooperating land-grant universities warranty these plans.