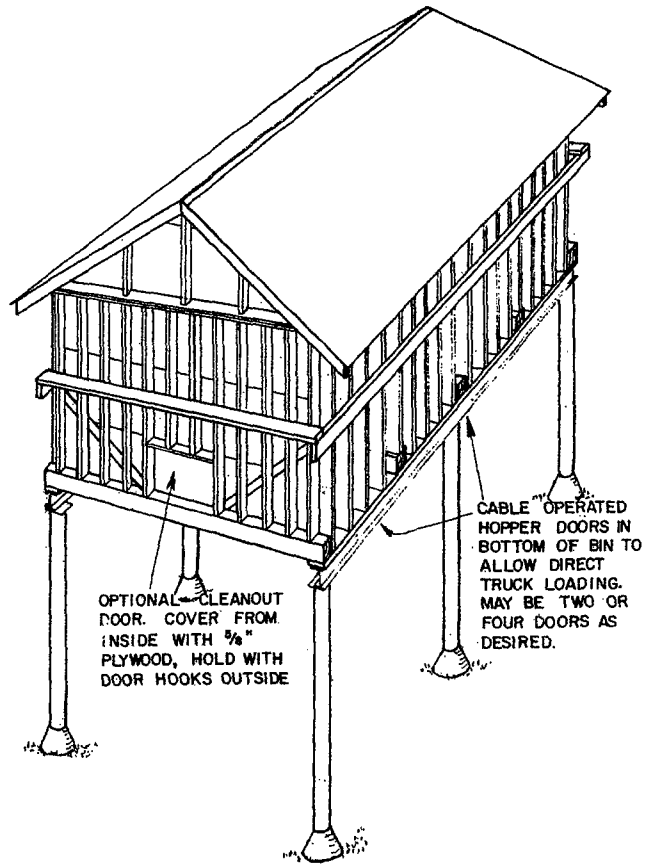


**FOUNDATION PLAN**



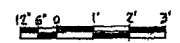
**PERSPECTIVE**

STORAGE BIN FOR SAWDUST FROM SAWMILL  
 DIRECT LOADING INTO LARGE DUMP TRUCKS  
 CLEARANCE 14', EXCEPT FOR HIGH CUBE  
 TRAILERS (13'-6" HIGH)—PROVIDE 16' CLEARANCE

**FINISH**

BIN CAN BE PAINTED, BUT IS BEST  
 LEFT UNFINISHED. PRESERVE WOOD BY  
 APPLICATIONS OF PENTACHLOROPHENOL (PENTA),  
 ESPECIALLY TO PROTECT END GRAIN OF  
 EXPOSED WOODEN PIECES.

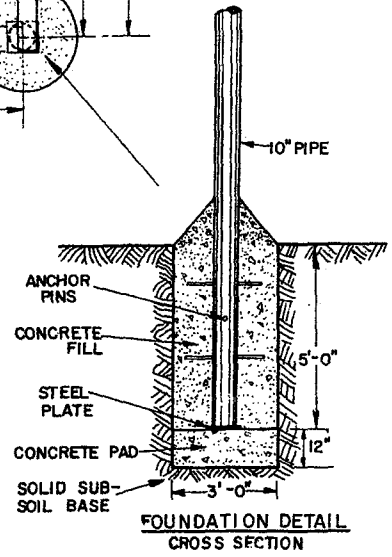
3500 CU. FT.



SCALE: 3/8"=1'-0" UNLESS OTHERWISE NOTED.

DESIGN FROM BIN BUILT  
 BY WADE COCHRAN,  
 MCKEAN COUNTY

PLAN LAYOUT IN  
 CONSULTATION WITH  
 ROE S. COCHRAN

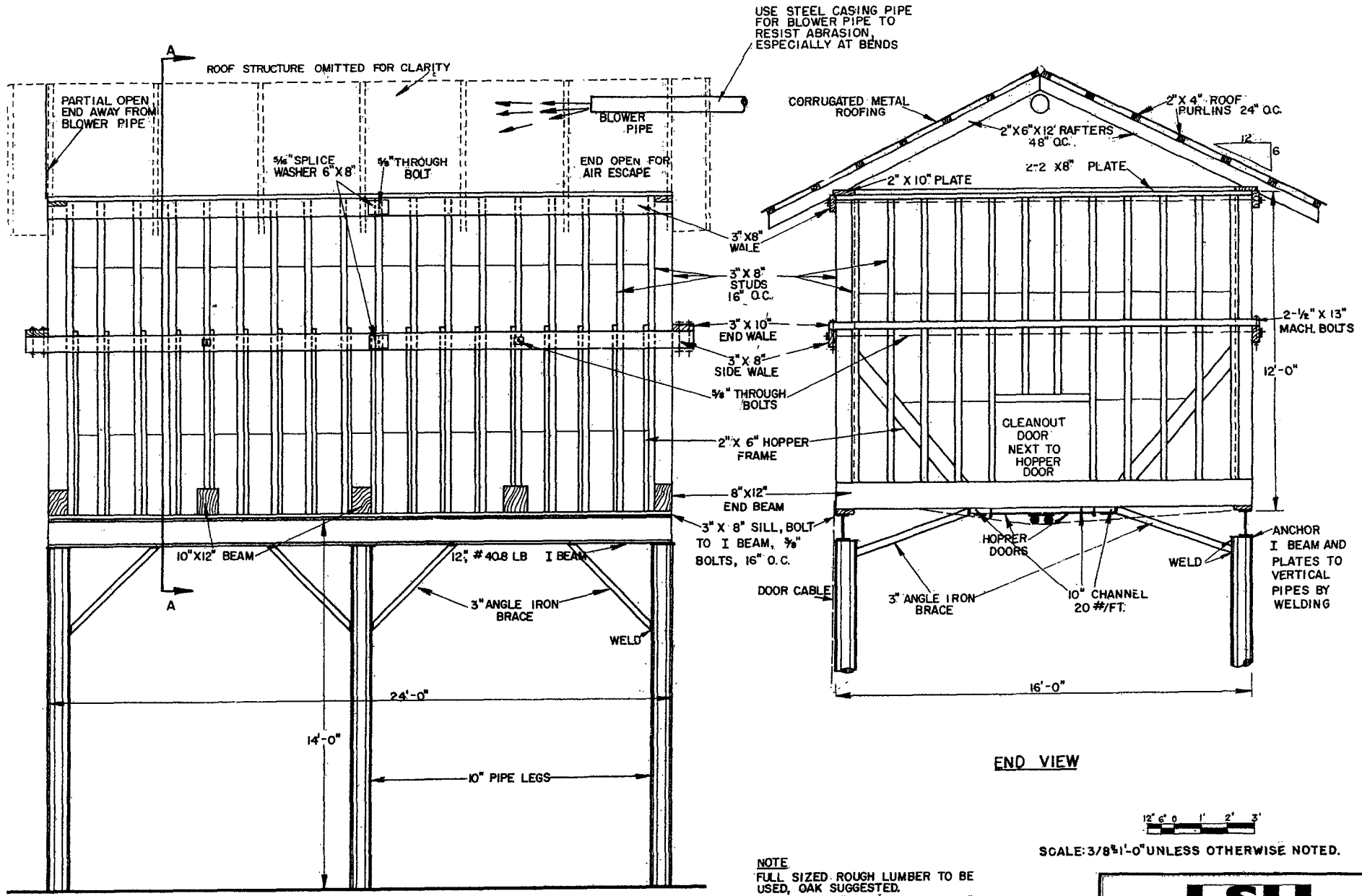


**FOUNDATION DETAIL  
 CROSS SECTION**

**NOTE:**  
 CONSULT LOCAL HEALTH AND BUILDING  
 CODE AUTHORITIES BEFORE STARTING  
 CONSTRUCTION.

EXTEND FOOTINGS TO FIRM BASE  
 BELOW FROST LINE

<b>LSU</b> AgCenter Research & Extension		
<b>ELEVATED SAWDUST BIN</b>		
PA '77	6276	SHEET 1 OF 3



SIDE VIEW

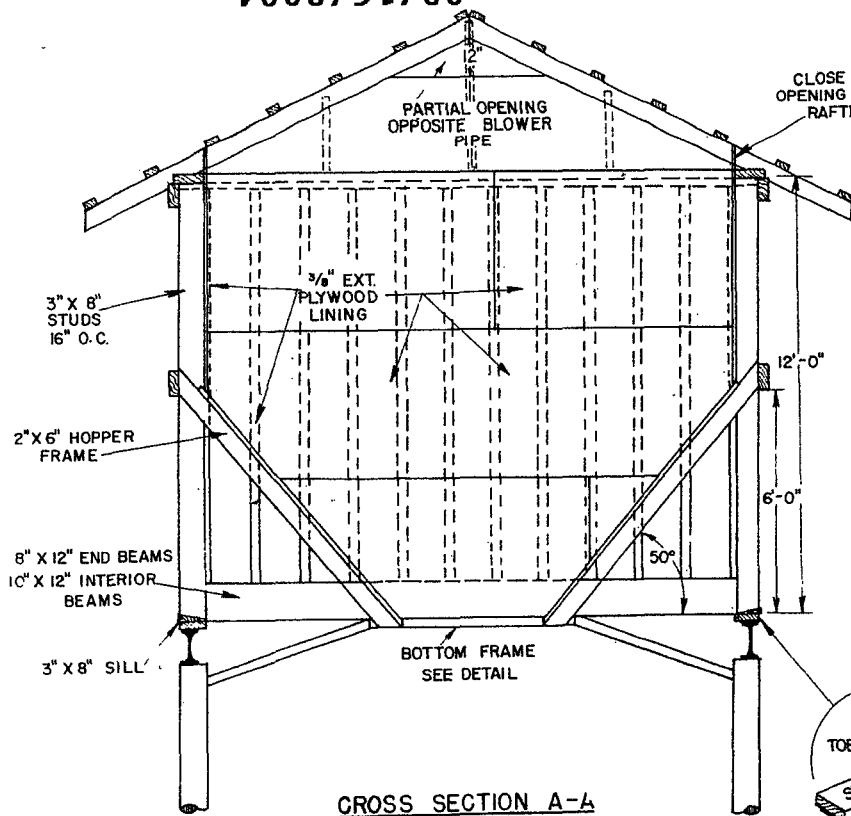
END VIEW



SCALE: 3/8" = 1'-0" UNLESS OTHERWISE NOTED.

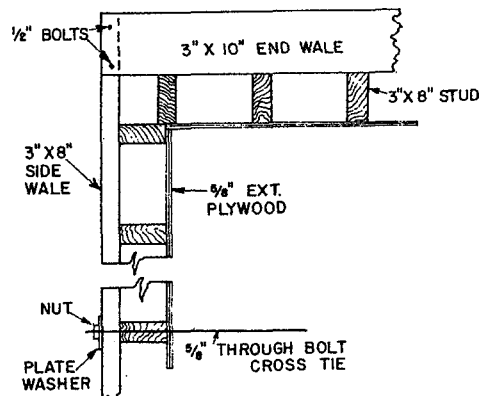
**NOTE**  
 FULL SIZED ROUGH LUMBER TO BE USED, OAK SUGGESTED.  
 BIN LINER - 5/8" EXT. PLYWOOD OR 1" LUMBER LINED WITH 28 GAUGE GALVANIZED STEEL.

<b>LSU</b> AgCenter Research & Extension			
<b>ELEVATED SAWDUST BIN</b>			
PA	'77	6 276	SHEET 2 OF 3

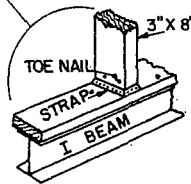


**CROSS SECTION A-A**

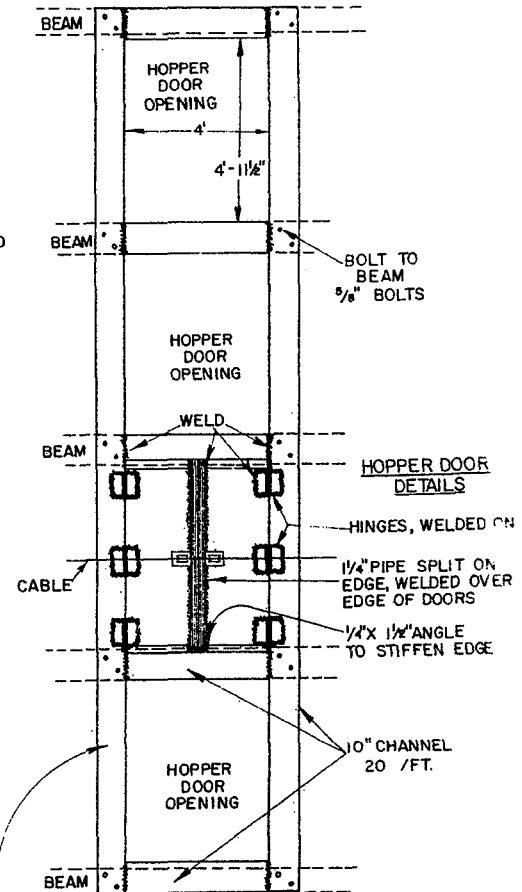
SCALE: 3/8" = 1'  
 12" 6" 0 1' 2' 3'



**WALL & CORNER DETAIL**



**STUD DETAIL**  
 TOENAIL TO SILL,  
 USE 24\"/>

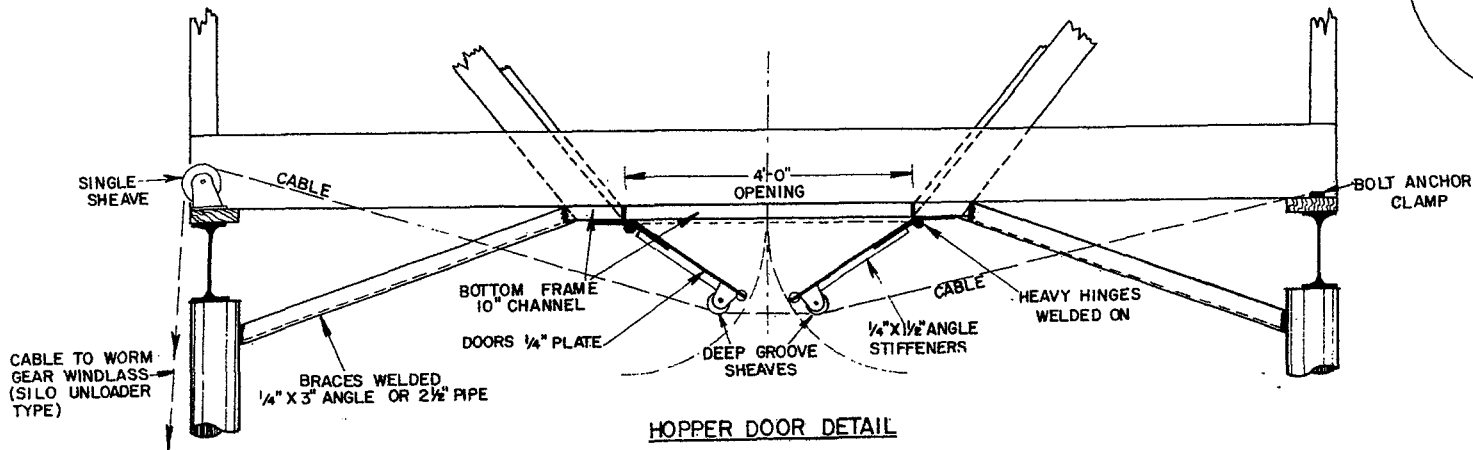


**BOTTOM FRAME DETAIL**

VIEW FROM BELOW

SCALE: 3/8" = 1'  
 12" 6" 0 1' 2' 3'

NOTE: FOUR HOPPER DOORS WORK BEST, BUT TWO CAN BE USED. IN HOPPER OPENINGS WITHOUT DOORS, USE A FLOOR OF 2\"/>



**HOPPER DOOR DETAIL**

12" 6" 0 1' 2' 3'

SCALE: 3/4" = 1'-0" UNLESS OTHERWISE NOTED.



**ELEVATED SAWDUST BIN**

PA. '77 6 2 7 6 SHEET 3 OF 3