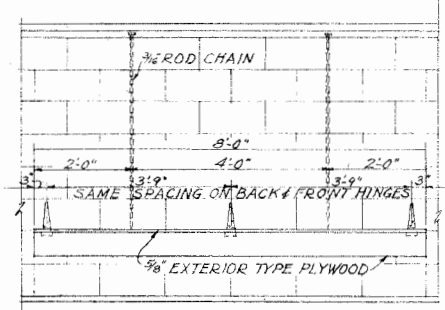
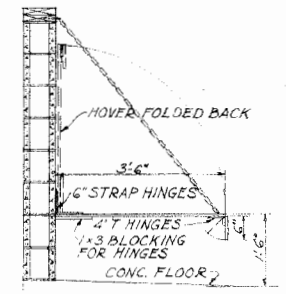


PERSPECTIVE



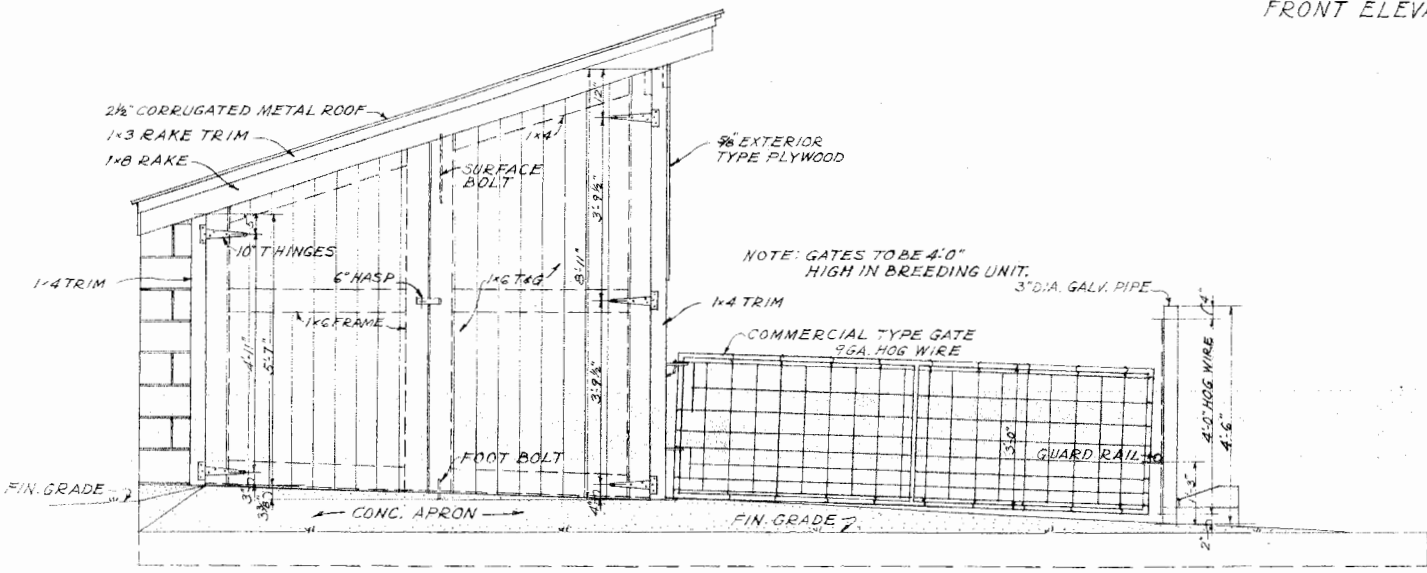
FRONT ELEVATION



SIDE ELEVATION

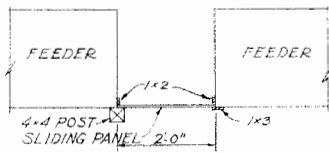
HOVER DETAILS
SCALE: 1/2" = 1'-0"

NOTE: INSTALL HOVERS IN FIRST TWO PENS ONLY.



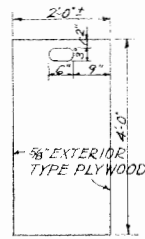
NOTE:
FINELY POWDERED ALUMINUM PAINT ON UPPER SURFACE OF AWNINGS AND OUTSIDE OF FEEDER.
USE PENTACHLOROPHENOL TREATED LUMBER FOR ALL CONTACT WITH CONCRETE.
INSTALL WATER LINE IN 4" TILE LAYS BEFORE FLOOR IS CAST
FOR WATER CLEANING INSTALL HIGH PRESSURE LINE WITH SPRIGOTS AND HOSE ABOVE TOP OF AWNING.

LSU AgCenter <small>Research & Extension</small>		
SWINE UNIT		
MONT '60	EX. 5873	SHEET 1 OF 2

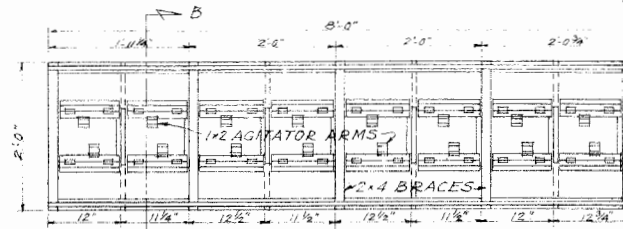


PARTIAL PLAN

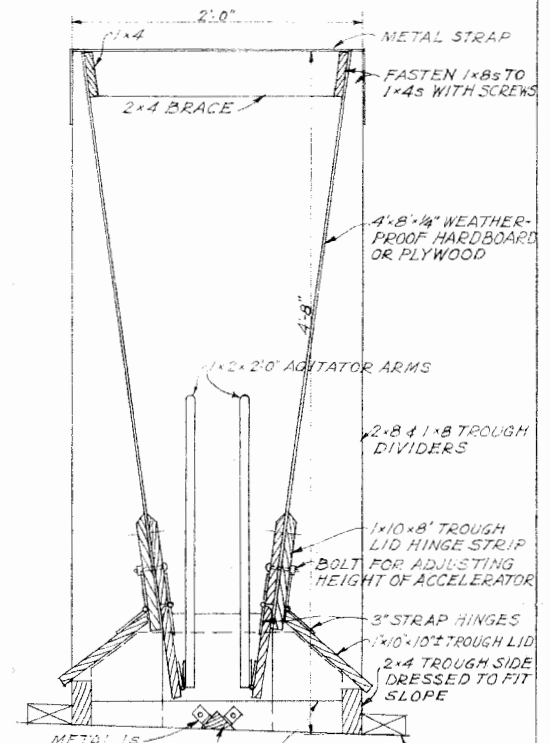
DETAILS OF VERTICAL SLIDING PANEL
SCALE: 1/2"=1'-0"



ELEVATION

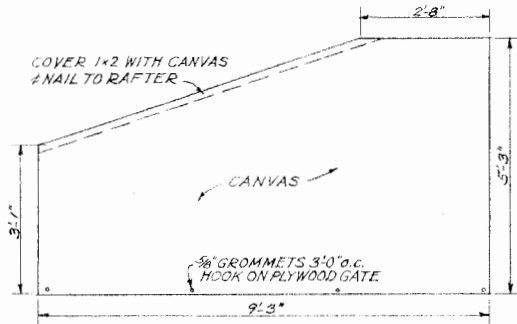


PLAN OF FEEDER
(METAL STRAPS NOT SHOWN)
SCALE: 3/4"=1'-0"

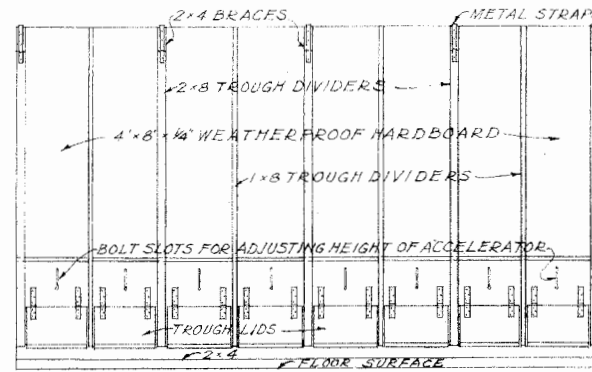
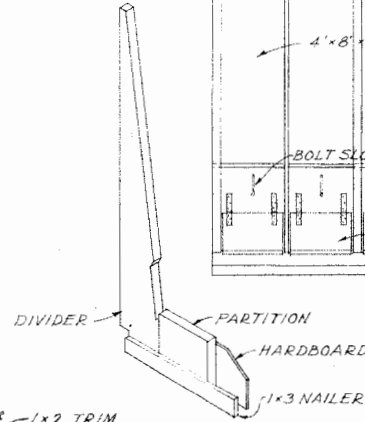


SECTION B-B
SCALE: 1/2"=1'-0"

IMBED 2x4 IN ASPHALT MASTIC BEFORE BOLTING DOWN.

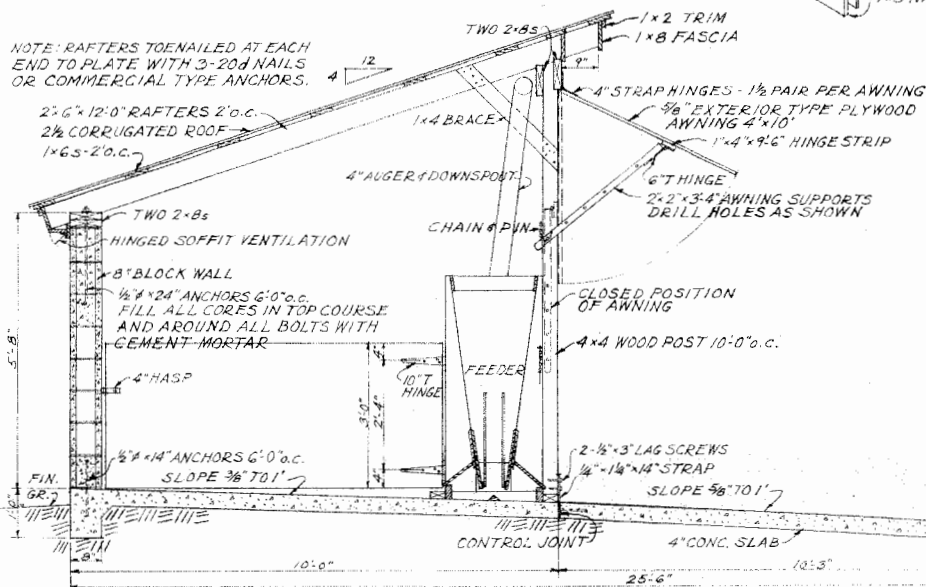


AIR BLOCKING PANEL
(BETWEEN PENS IF NEEDED)
SCALE: 1/2"=1'-0"

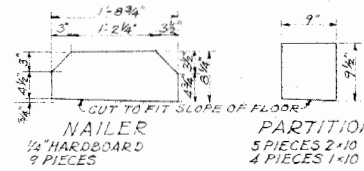


FRONT ELEVATION
SCALE: 3/4"=1'-0"

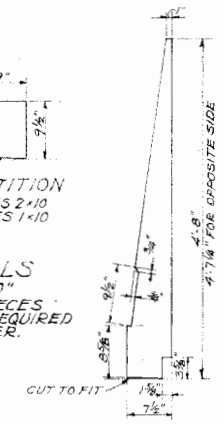
NOTE: RAFTERS TO NAIL AT EACH END TO PLATE WITH 3-20# NAILS OR COMMERCIAL TYPE ANCHORS.



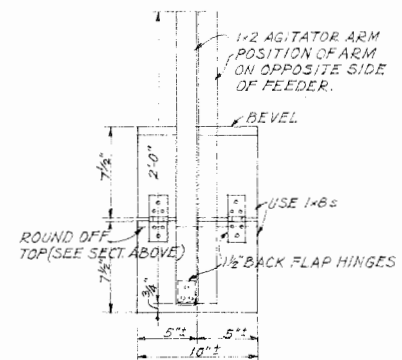
SECTION A-A
(SEE PLAN SHEET 1)
SCALE: 1/2"=1'-0"



TROUGH DETAILS
SCALE: 3/4"=1'-0"
NOTE: NUMBER OF PIECES AS NOTED ARE REQUIRED FOR EACH FEEDER.



DIVIDER @ END
10 PIECES 2x8
8 PIECES 1x8



ACCELERATOR DEVICE
ONE FOR EACH TROUGH SPACE
SCALE: 1/2"=1'-0"

LSU AgCenter <small>Research & Extension</small>		
SWINE UNIT		
MONT. '60	EX. 5873	SHEET 2 OF 2

Disclaimer

This site makes available conceptual plans that can be helpful in developing building layouts and selecting equipment for various agricultural applications. These plans do not necessarily represent the most current technology or construction codes. They are not construction plans and do not replace the need for competent design assistance in developing safe, legal and well-functioning agricultural building system. The LSU Agriculture Center, the Mid-West Plan Service, the United States Department of Agriculture and none of the cooperating land-grant universities warranty these plans.