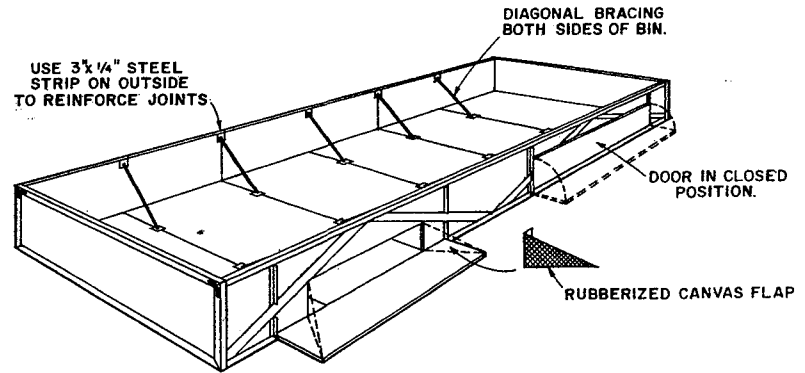


HINGE DETAIL
SCALE: NONE

NOTE:
FOR WATER-TIGHT CONSTRUCTION,
APPLY WATERPROOF MASTIC TO
ALL CORNERS BEFORE INSERTING
PLYWOOD.

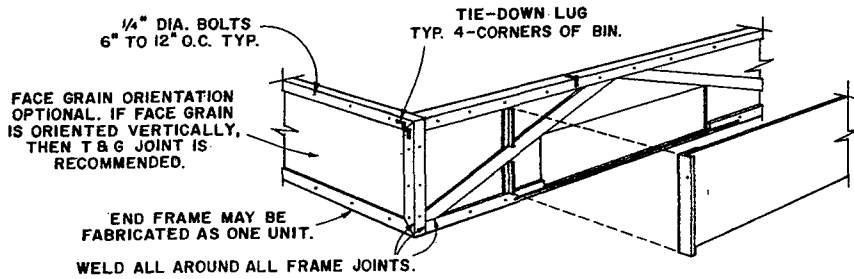


PERSPECTIVE

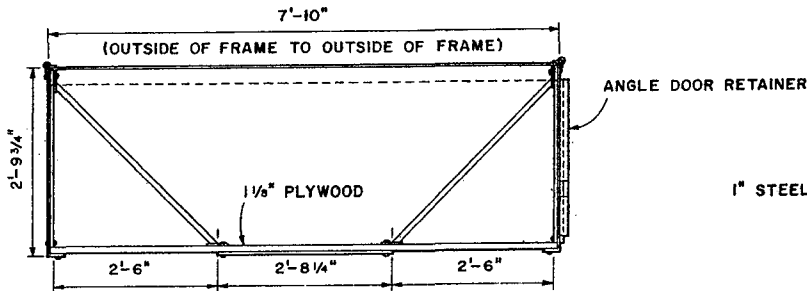
NOTE:
THIS BIN IS INTENDED TO BE CARRIED ON A FLAT BED TRUCK OR
TRUCK TRAILER. DIMENSIONS SHOWN WITHIN THIS PLAN ARE
APPLICABLE TO A 24-FT. BIN. WITH MINOR MODIFICATIONS, THE
LENGTH OF THIS BIN MAY BE VARIED TO SUIT OTHER TRUCK BED
LENGTHS. THE OUTSIDE WIDTH IS INTENDED TO COMPLY WITH WIDTH
REGULATIONS OF MOST STATES; HOWEVER, ONE MUST CONSIDER
INDIVIDUAL STATE REGULATIONS AND BINDER DIMENSIONS BEFORE
BUILDING.

CONSULT LOCAL CODE AUTHORITIES BEFORE STARTING CONSTRUCTION.

MENTION OF A TRADE NAME DOES NOT CONSTITUTE A GUARANTEE OR
WARRANTY OF THE PRODUCT BY THE U.S. DEPARTMENT OF AGRICULTURE
OR AN ENDORSEMENT BY THE DEPARTMENT OVER OTHER PRODUCTS NOT
MENTIONED.

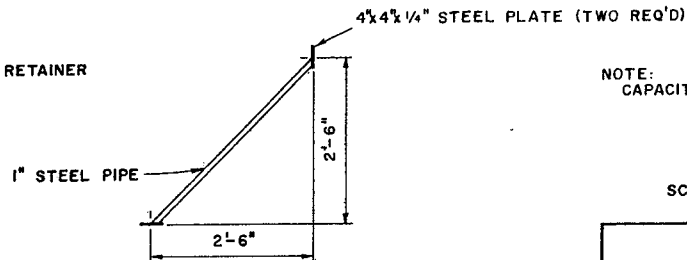


FRONT CORNER DETAIL
SCALE: NONE



SECTION "A-A"

NOTE:
7'-9 1/4" CUT LENGTH
OF BOTTOM PANELS



PIPE BRACE
(10 REQ'D)

NOTE:
CAPACITY 490 CU. FT.

12" 6" 0 1"
SCALE: 3/4" = 1'-0" UNLESS
OTHERWISE NOTED.

LSU AgCenter <small>RESEARCH & EXTENSION</small>			
BULK HAULER			
APA	'76	6263	SHEET 1 OF 2

BASIC STEEL DIMENSIONS

1. USE $3\frac{1}{2} \times \frac{1}{4}$ " STEEL ANGLE FOR ALL PERIPHERAL FRAMING.
2. USE $3\frac{1}{4}$ " STEEL STRIP FOR ALL DIAGONAL FRAMING, FOR DIAGONAL BRACE TIES UNDER BIN BOTTOM, AND TO REINFORCE WALL JOINTS ON NON-OPENING SIDE OF BIN.
3. USE $1\frac{1}{2} \times 1\frac{1}{2} \times \frac{1}{8}$ " STEEL ANGLE FOR VERTICAL DOOR RETAINERS.
4. DOOR SILLS WILL BE CUT SO AS TO BE EVEN WITH THE SURFACE OF THE BIN FLOOR.
5. ALL STEEL WORK TO BE COATED WITH GOVERNMENT AGENCY-APPROVED COATING FOR FOOD HANDLING.

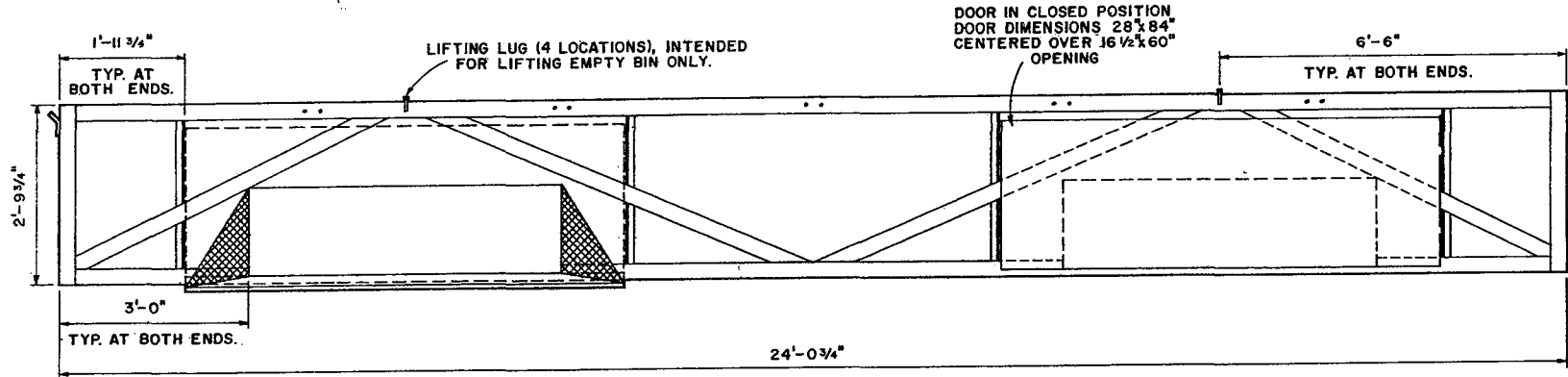
PLYWOOD SPECIFICATIONS

BIN SIDES

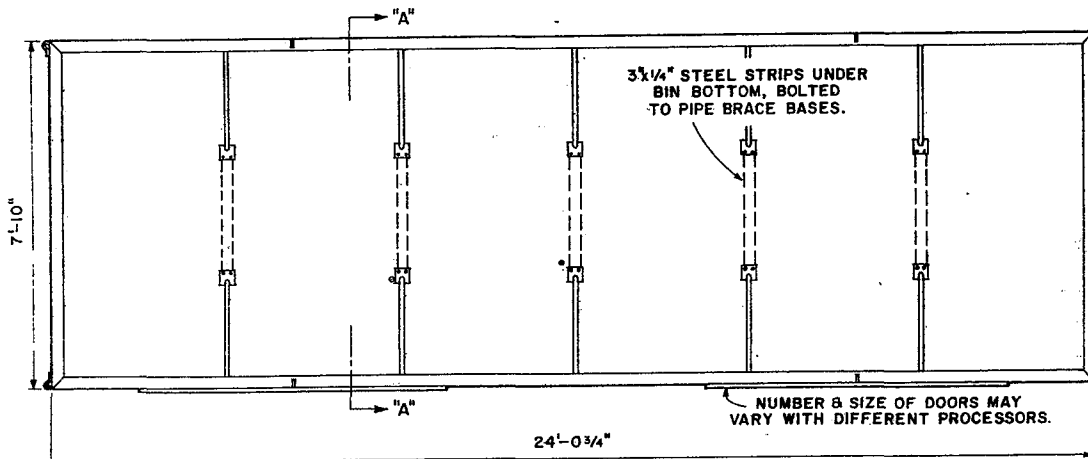
- $\frac{1}{8}$ " DFPA C-C PLUGGED EXTERIOR GROUP 1 OR 2.
- $\frac{1}{8}$ " DFPA B-C EXTERIOR GROUP 1 OR 2.
- $\frac{1}{8}$ " DFPA A-C EXTERIOR GROUP 1 OR 2.

BIN BOTTOM

- $1\frac{1}{8}$ " DFPA C-C PLUGGED EXTERIOR GROUP 1 OR 2 T & G.
- $1\frac{1}{8}$ " DFPA B-C EXTERIOR GROUP 1 OR 2 T & G.
- $1\frac{1}{8}$ " DFPA A-C EXTERIOR GROUP 1 OR 2 T & G.



SIDE ELEVATION



PLAN

12' 6" 0' 1' 2'
SCALE: 1/2" = 1'-0"

NOTE:

THE PLYWOOD USE RECOMMENDATIONS CONTAINED IN THIS PLAN ARE BASED ON AMERICAN PLYWOOD ASSOCIATION'S CONTINUING PROGRAM OF LABORATORY TESTING, PRODUCT RESEARCH AND COMPREHENSIVE FIELD EXPERIENCE. HOWEVER, QUALITY OF WORKMANSHIP AND THE CONDITIONS UNDER WHICH PLYWOOD IS USED VARY WIDELY. BECAUSE THE ASSOCIATION HAS NO CONTROL OVER THESE ELEMENTS, IT CANNOT ACCEPT RESPONSIBILITY FOR PLYWOOD PERFORMANCE OR DESIGNS AS ACTUALLY CONSTRUCTED.

12' 6" 0' 1'

SCALE: 3/4" = 1'-0" UNLESS OTHERWISE NOTED.



BULK HAULER

APA '76 6263 SHEET 2 OF 2