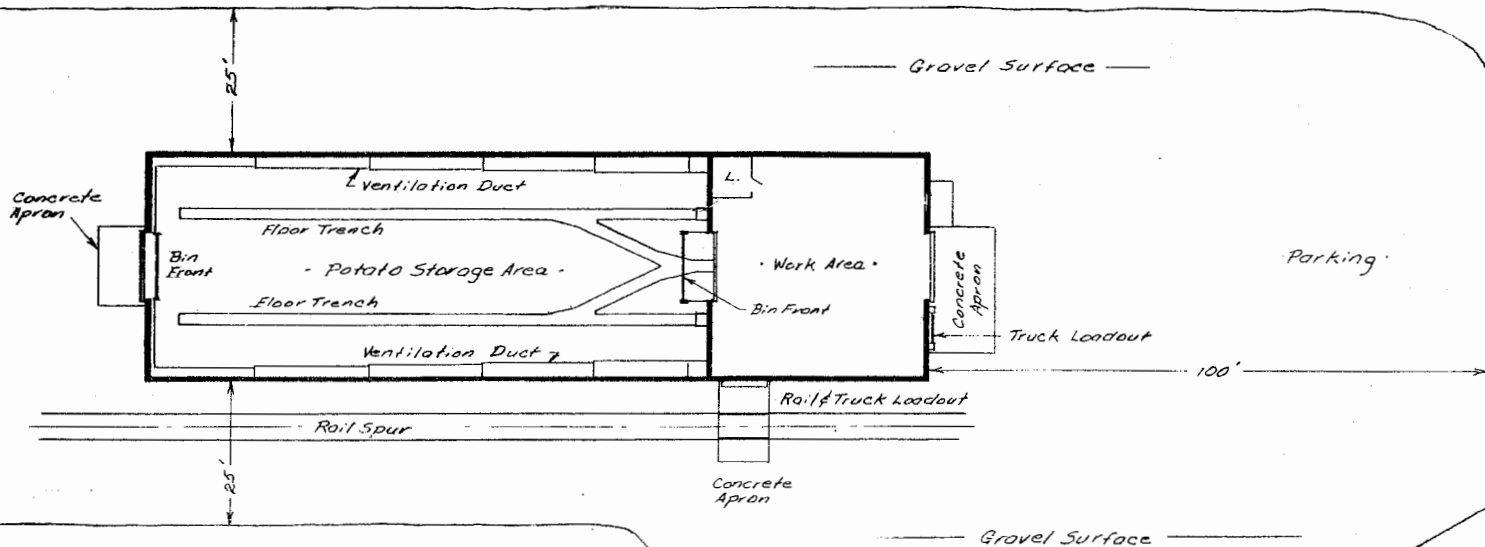


Perspective



Site Plan
Scale: 1/16" = 1'

THE OPERATOR PLANNING TO BUILD A STORAGE SHOULD RETAIN THE SERVICES OF A PROFESSIONAL ENGINEER TO DESIGN THE STORAGE TO MEET THE OPERATOR'S PARTICULAR NEEDS AND TO MEET LOCAL CONDITIONS, AS WELL AS TO SUPERVISE CONSTRUCTION.

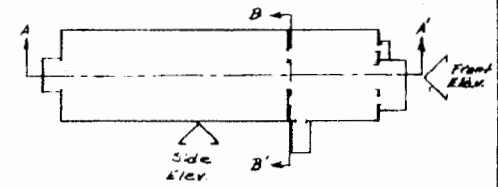
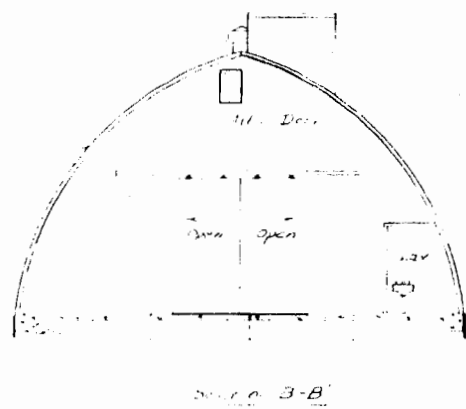
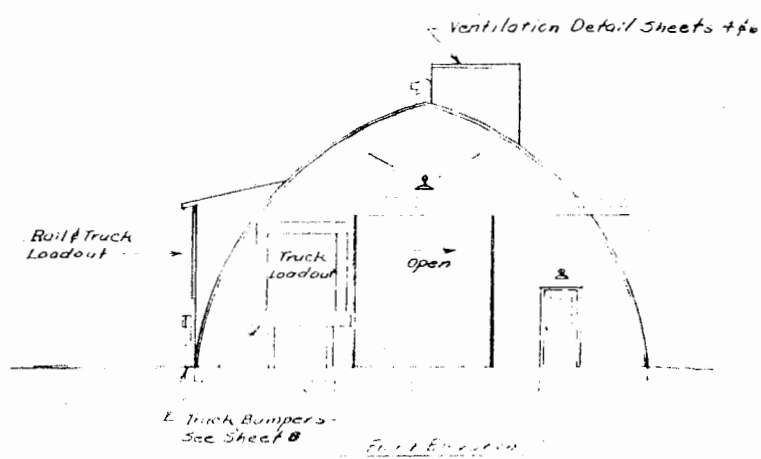
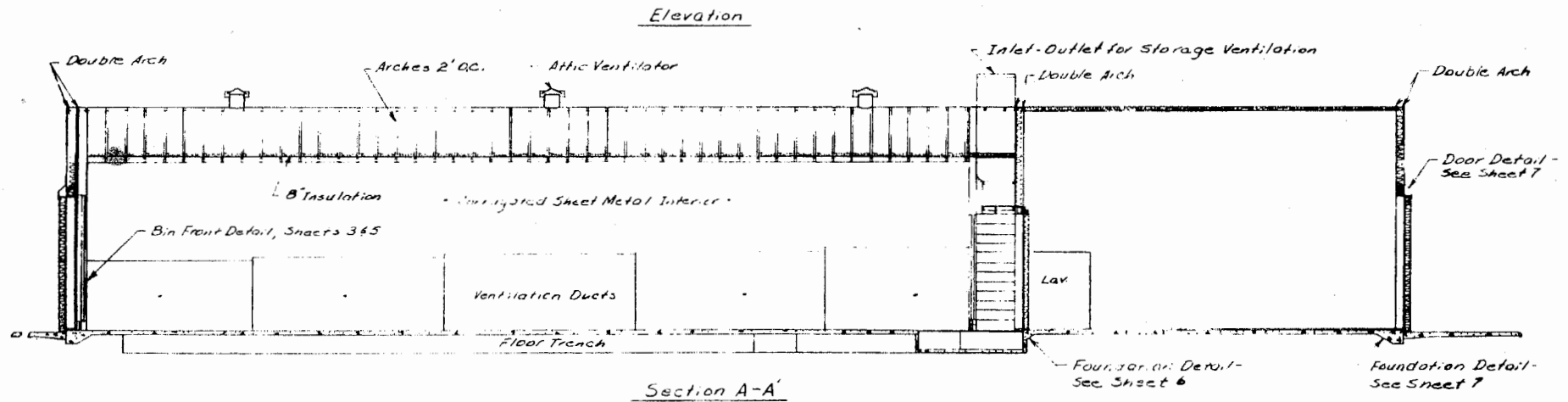
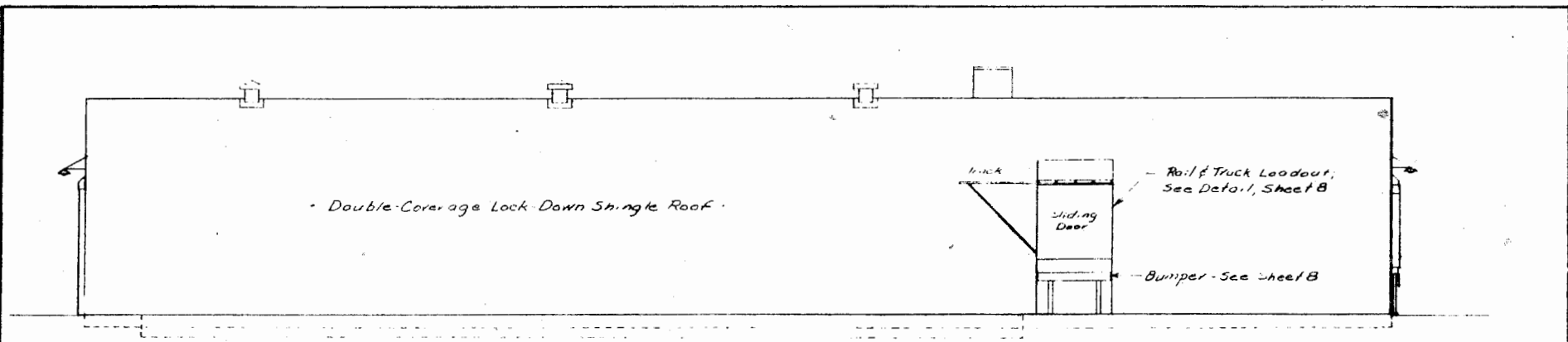
NOTE ADDED-SHEET 1
REVISED: 5-2-69

Scale: As Shown

Potato Storage
20,000 Cwt., Arched Roof

ARS-TFRD	EX. 5989	SHEET 1 OF 8
----------	----------	--------------

Perspective & Site Plan



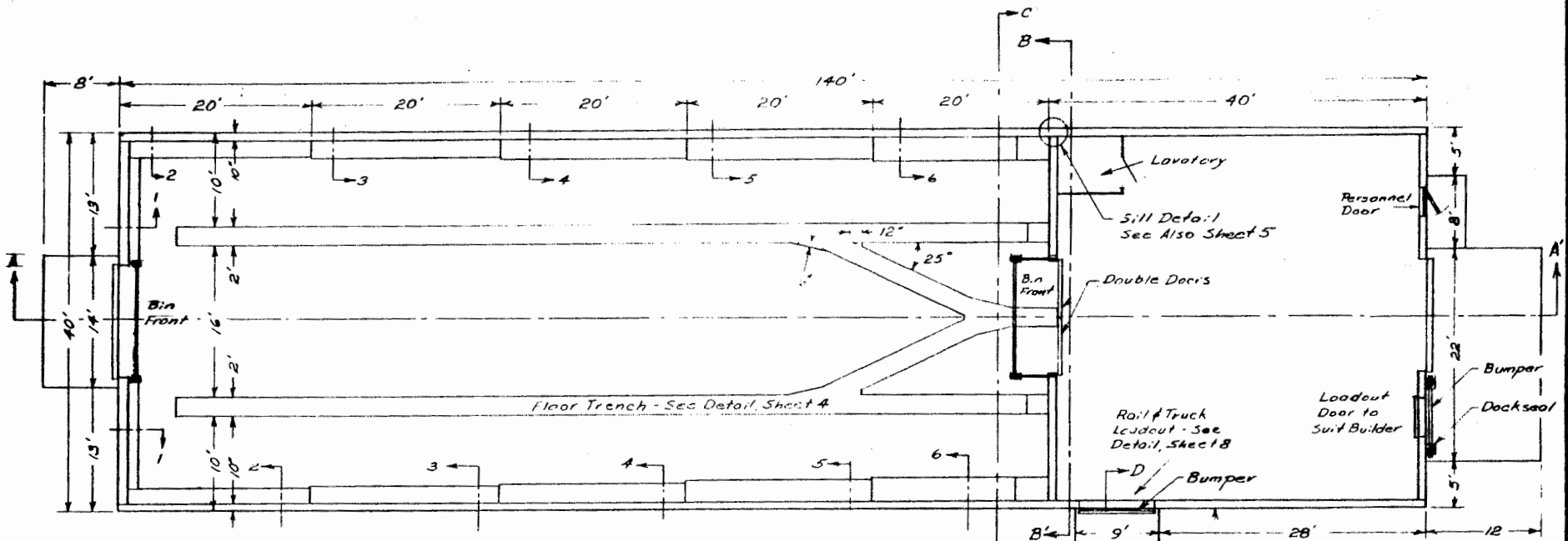
Scale: 1/4" = 1'

LSU
AgCenter
ARCHITECT & ENGINEERS

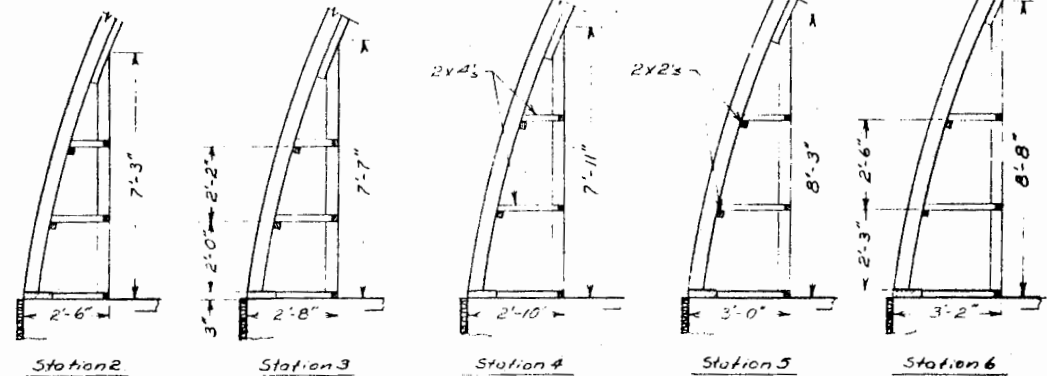
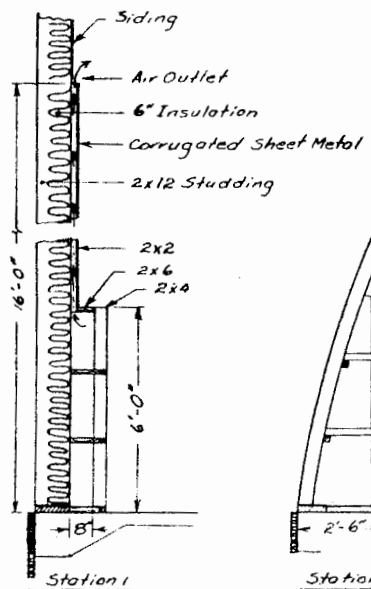
Palato Storage
20,000 Cwt. Arch'd Roof

ARS-TFRD ECL 5989 SHEET 2 OF 5

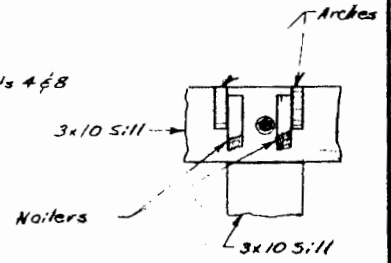
Elevations & Sections



Plan Layout
Scale: 3/8" = 1'



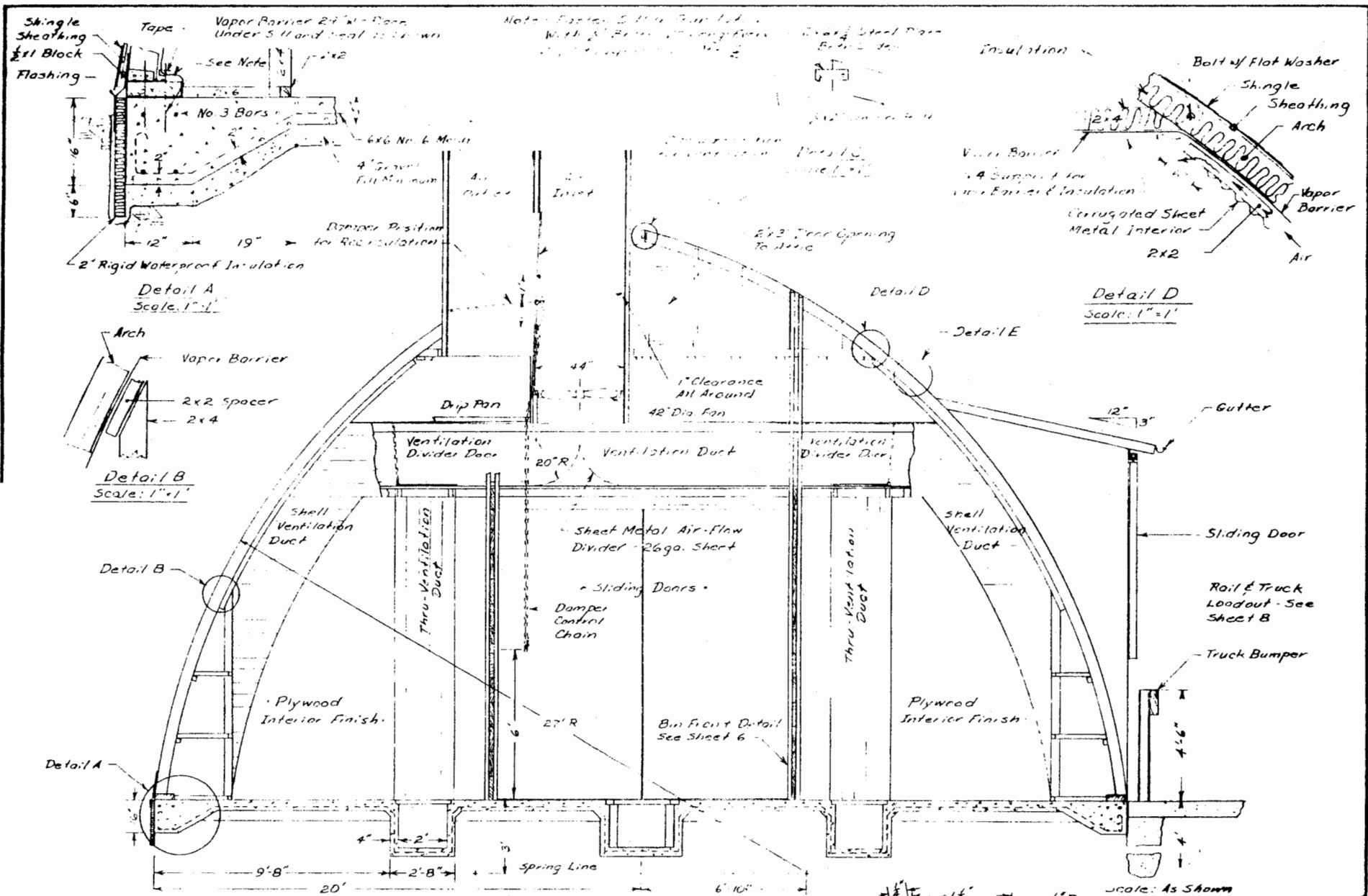
Ventilation Duct Sections
Scale: 3/8" = 1'




Sill Detail
at Bin Wall
Scale: 1" = 1'

Scale: As Shown

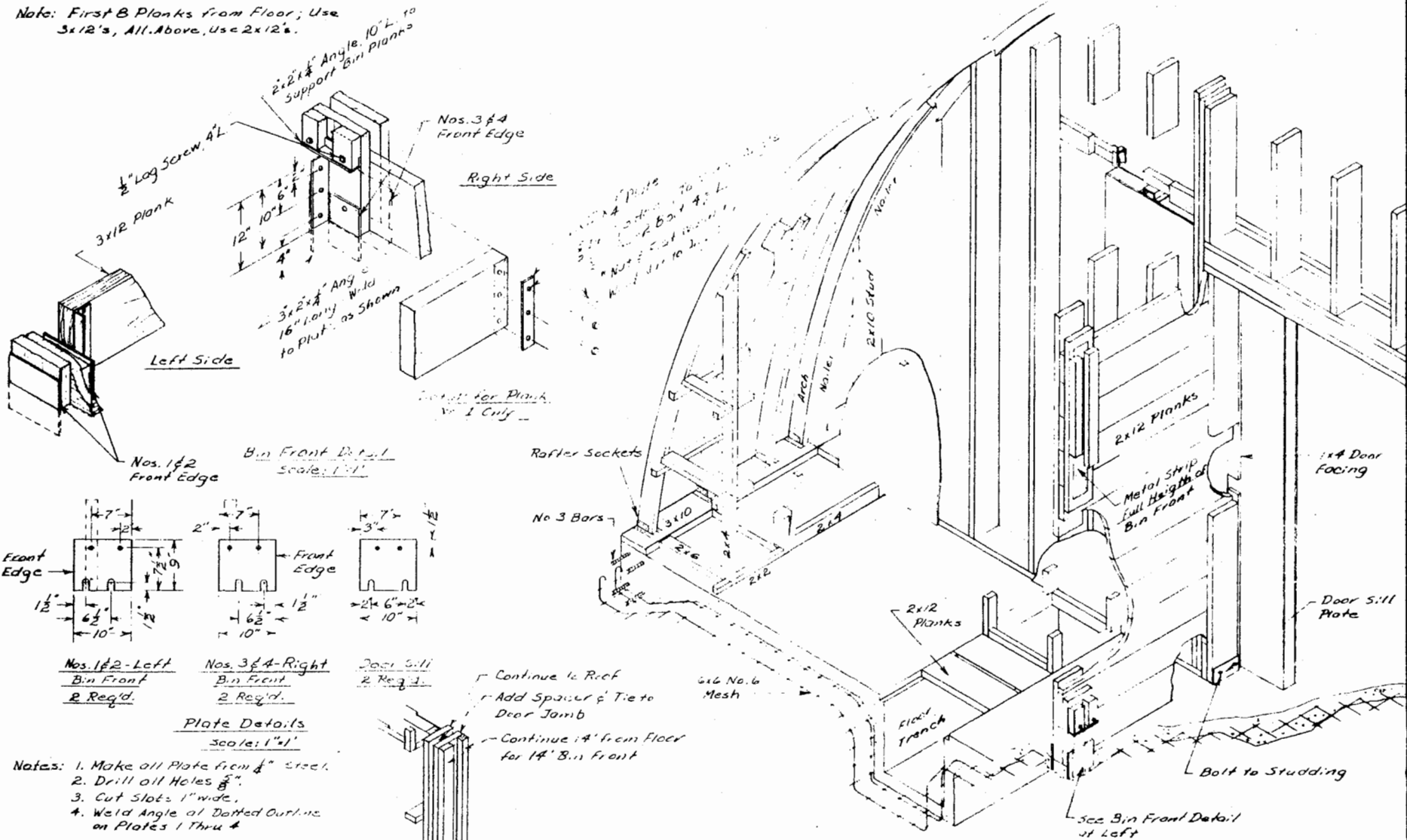
Potato Storage 20,000 Cwt. Arched Roof		
ARS-TFRD	EXL 5989	SHEET 3 OF 6
Layout & Duct Details		



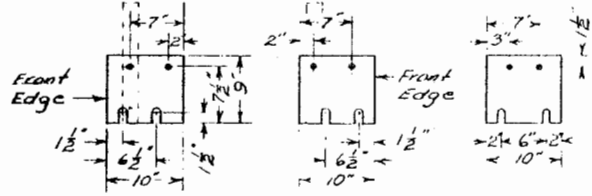
Caution: Many Areas Cannot Use "Flooding" Silt Foundation Shown.

		
Potato Storage 20000 Cwt. Arch'd Pool		
ARCH. NO. 1	EX. 1989	SHEET 4 OF 8
Section 1000-1000		

Note: First 8 Planks from Floor; Use 3x12's, All Above, Use 2x12's.



Bin Front Detail
Scale: 1"=1'



Nos. 1x2 - Left
Bin Front
2 Req'd.

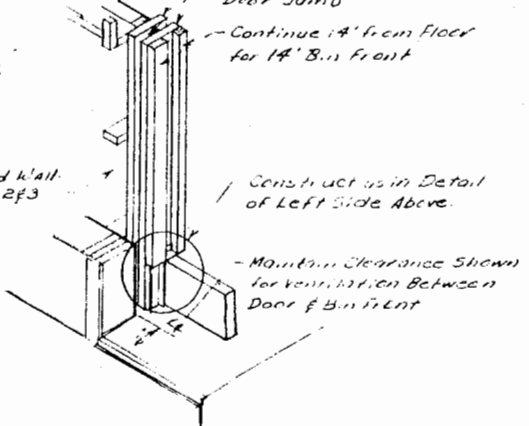
Nos. 3x4 - Right
Bin Front
2 Req'd.

Door Sill
2 Req'd.

Plate Details
Scale: 1"=1'

- Notes:
1. Make all Plate from 1/4" Steel.
 2. Drill all Holes 5/8"
 3. Cut Slots 1" wide.
 4. Weld Angle at Dotted Outline on Plates 1 Thru 4

Duct in End Wall.
See Sheets 2f3

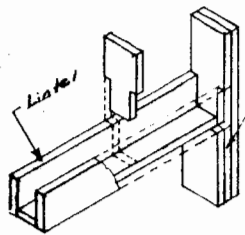


Rear Door & Bin Front
Scale: 3/4"=1'

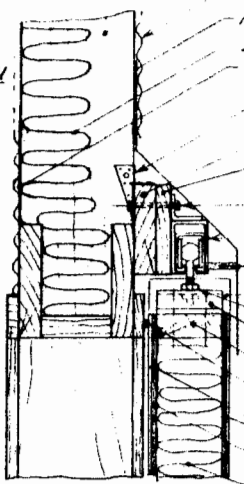
Construction D=10.15
No. 15

Scale: As Shown

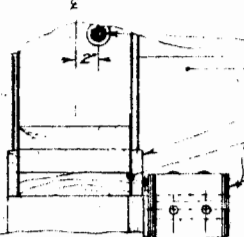




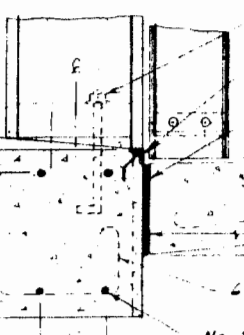
Jamb & Lintel Detail
No Scale



Head



Jamb



Sill

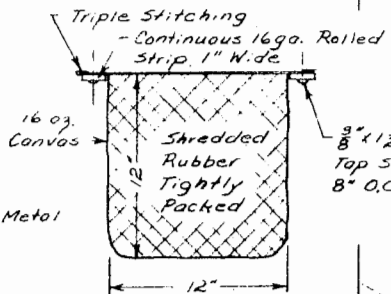
Door Details
Scale: 1/2" = 1'

- 2x10 Stud
- Corrugated Sheet Metal
- Flashing
- Insulation
- Vapor Barrier
- Framing Anchor
- 2x8 Track Support
- 1x8 Shim

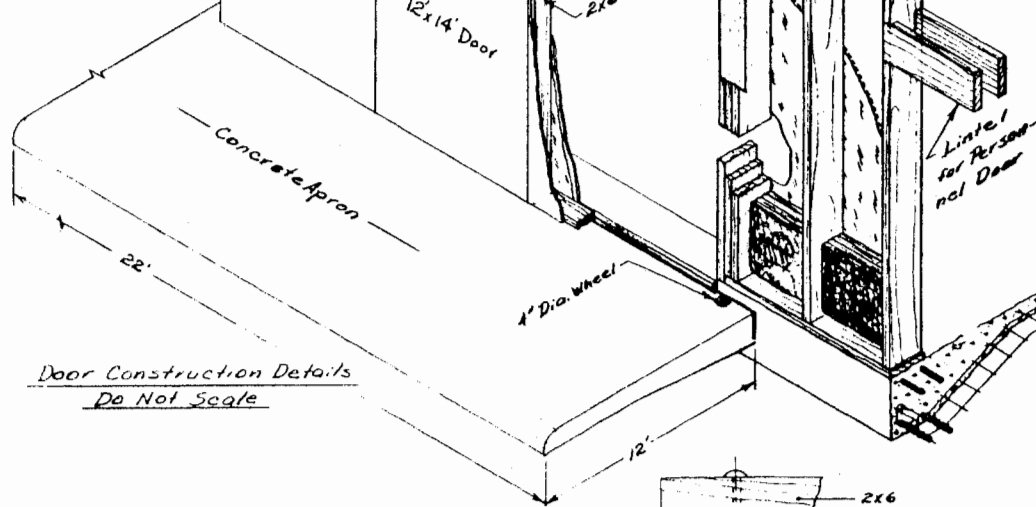
- 3/8 Bolt
- Track
- Wood Strip
- Bird Guard on Door
- Adjusting Nuts
- Door Hanger - See Det.
- 2x6
- Door Seal
- 3/8 Plywood Exterior
- Vapor Barrier
- Insulation
- Sill Bolt
- Apron
- 1x4 Door Facing
- Felt Seal
- Door (Closed Position)

- 1/2" x 12" L. Sill Bolt, 2" off C.
- Tread Guard - 1/2" x 1 1/2" x 1/2"
- Angle; Weld on No. 3 Bars 2' OC.
- Expansion Joint
- 2x6 Reinforcing Mesh

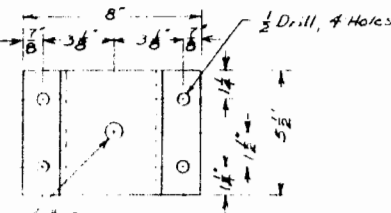
No. 3 Bars



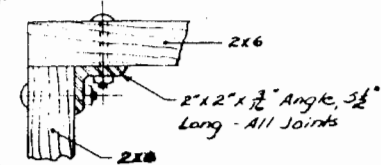
Truck Loadout Dockseal
See Sheet 3
Scale: 2" = 1'



Door Construction Details
Do Not Scale



Door Hanger Detail
Scale: 3" = 1'



Door Corner Detail
Scale: 3" = 1'

See Sheet 4B Shear



Disclaimer

This site makes available conceptual plans that can be helpful in developing building layouts and selecting equipment for various agricultural applications. These plans do not necessarily represent the most current technology or construction codes. They are not construction plans and do not replace the need for competent design assistance in developing safe, legal and well-functioning agricultural building system. The LSU Agriculture Center, the Mid-West Plan Service, the United States Department of Agriculture and none of the cooperating land-grant universities warranty these plans.