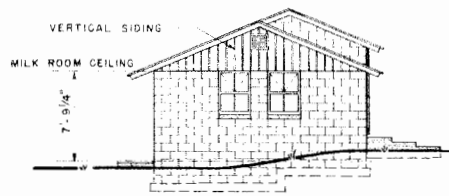
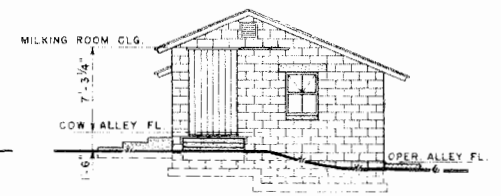


CUT-AWAY PERSPECTIVE



RIGHT END ELEVATION

SCALE: 1/8" = 1'-0"

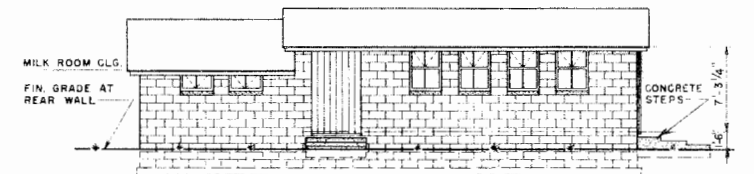


LEFT END ELEVATION

SCALE: 1/8" = 1'-0"

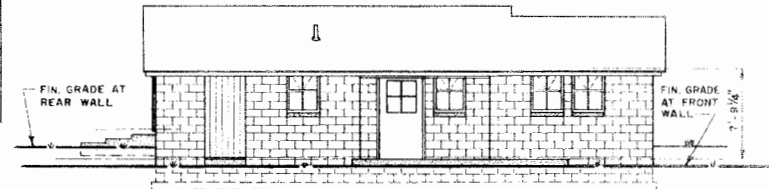
WINDOW SCHEDULE				
NO.	WIDTH	HEIGHT	REMARKS	REQ.
A	2'-8"	3'-6"	STEEL UTILITY SASH	11
B	2'-8"	1'-10"	STEEL BASEMENT SASH	2

DOOR SCHEDULE					
NO.	WIDTH	HEIGHT	THK.	REMARKS	REQ.
1	3'-8"	6'-8"	1 3/8"	FLUSH WOOD, GLAZED	2
2	3'-0"	6'-8"	1 3/8"	FLUSH WOOD DOOR	1
3	2'-4"	6'-8"	1 3/8"	FLUSH WOOD DOOR	1
4	2'-0"	7'-0"	3/4"	PLYWOOD DOOR	1
5	4'-0"	7'-0"		T & G BATTEN DOOR	2
6	3'-4"	7'-0"		T & G BATTEN DOOR	1
7	3'-8"	6'-8"	1 1/8"	SCREEN DOOR	2



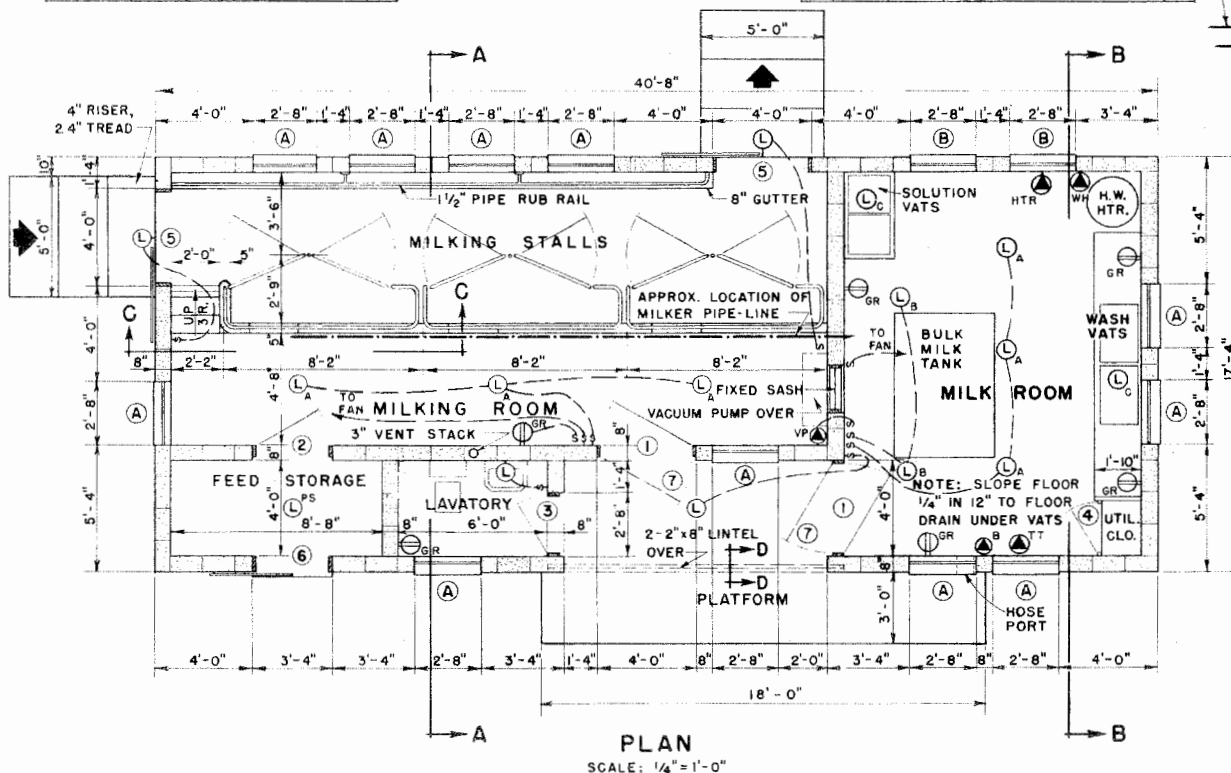
REAR ELEVATION

SCALE: 1/8" = 1'-0"



FRONT ELEVATION

SCALE: 1/8" = 1'-0"



PLAN

SCALE: 1/4" = 1'-0"

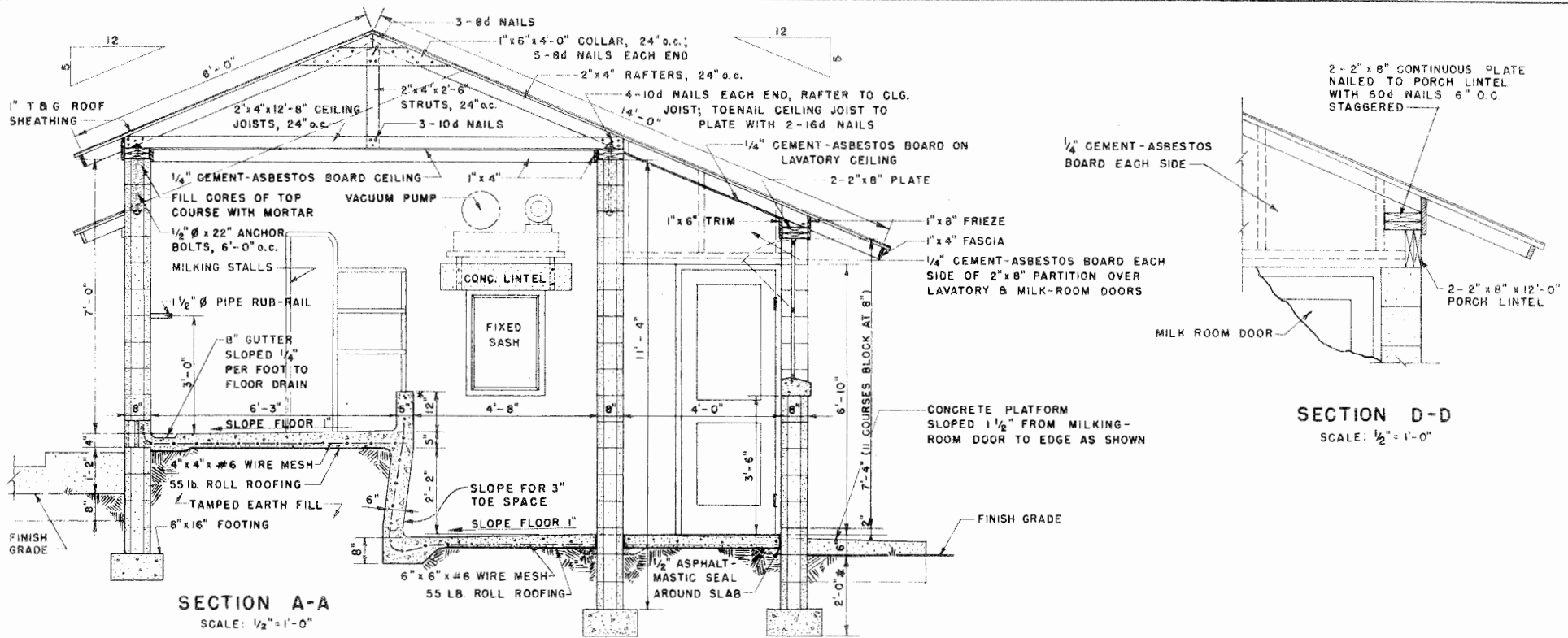
GENERAL NOTES

1. CONSULT LOCAL HEALTH AUTHORITIES BEFORE STARTING CONSTRUCTION TO BE SURE THAT PLAN CONFORMS WITH LOCAL REGULATIONS.
2. VARIABLE DIMENSIONS MARKED WITH \*. CARRY FOUNDATION TO SOLID GROUND BELOW FROST.
3. PRECAST CONCRETE LINTELS OVER OPENINGS HAVING MASONRY ABOVE. LINTELS TO HAVE 8" BEARING ON EACH END. REINFORCE LINTELS WITH 2-3/8" RODS 4" APART AND 1 1/2" FROM BOTTOM.
4. FILL BLOCK CORES UNDER ENDS OF LINTELS WITH CEMENT MORTAR.
5. CONCRETE FLOORS USED BY CATTLE TO HAVE BROOMED (ROUGH) FINISH.
6. PAINT EXTERIOR SURFACE OF BLOCK WALL WITH 2 COATS OF CEMENT PAINT ABOVE FINISH GRADE, PARGE WITH 1/2" CEMENT-MORTAR BELOW FIN GRADE.
7. ORAINS TO MEET LOCAL CONDITIONS.

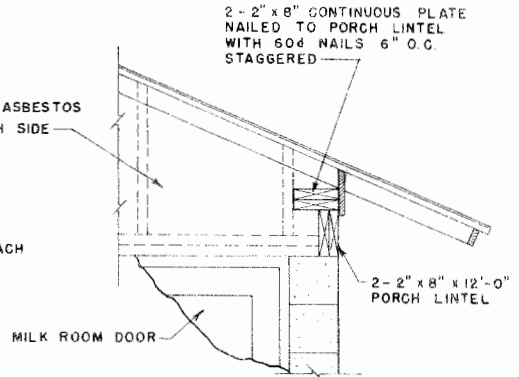


3-STALL MILKING PLANT

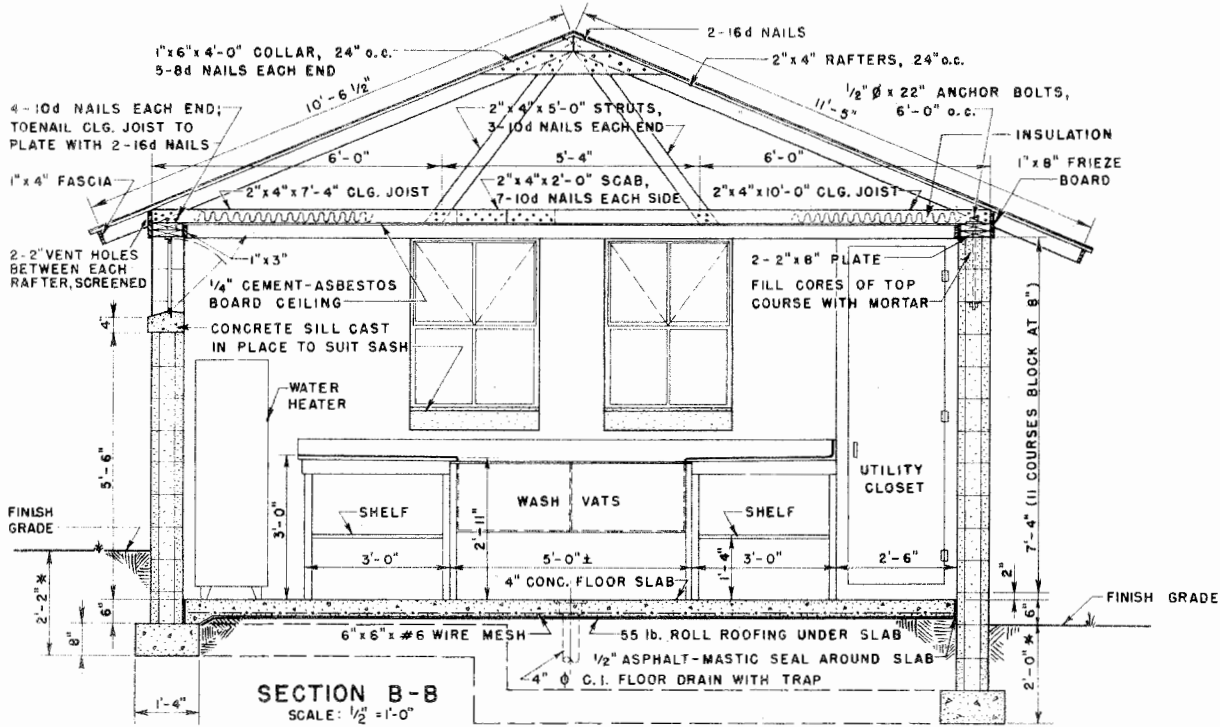
USDA '60 EX. 5875 SHEET 1 OF 2



**SECTION A-A**  
SCALE: 1/2" = 1'-0"



**SECTION D-D**  
SCALE: 1/2" = 1'-0"



**SECTION B-B**  
SCALE: 1/2" = 1'-0"

**ELECTRICAL SYMBOLS**

- S SWITCH
- (L)<sub>PS</sub> PULL SWITCH
- (L) LAMP
- (L)<sub>A</sub> 40 WATT FLUORESCENT STRIP FIXTURE
- (L)<sub>B</sub> SPOTLIGHTS TO ILLUMINATE BULK MILK TANK OPENINGS  
NO FIXTURES TO BE MOUNTED DIRECTLY ABOVE  
OPENINGS OF BULK TANK
- (L)<sub>C</sub> 250 WATT INFARED LAMPS
- (O)<sub>GR</sub> DOUBLE CONVENIENCE OUTLET GROUNDED
- (V)<sub>P</sub> MILKER VACUUM PUMP 230 VOLT, 3P, 5N FUSED SWITCH
- (B) BULK MILK TANK 230 VOLT, 3P, 5N FUSED SWITCH
- (T) TANK TRUCK 230 VOLT
- (W)<sub>H</sub> WATER HEATER 230 VOLT, 3P, 5N FUSED SWITCH
- (H)<sub>TR</sub> HEATER

NOTE:  
\* VARIABLE DIMENSIONS



## Disclaimer

This site makes available conceptual plans that can be helpful in developing building layouts and selecting equipment for various agricultural applications. These plans do not necessarily represent the most current technology or construction codes. They are not construction plans and do not replace the need for competent design assistance in developing safe, legal and well-functioning agricultural building system. The LSU Agriculture Center, the Mid-West Plan Service, the United States Department of Agriculture and none of the cooperating land-grant universities warranty these plans.