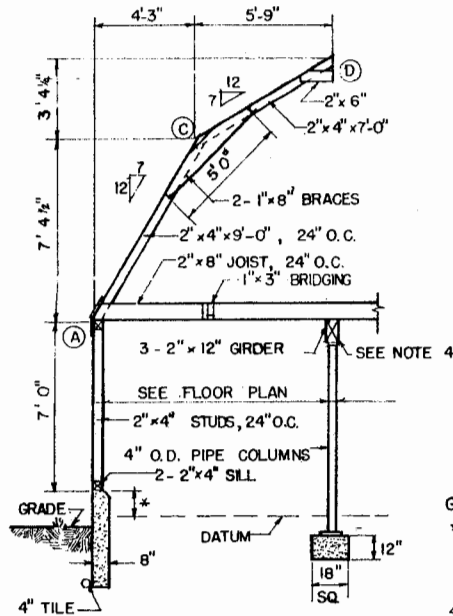


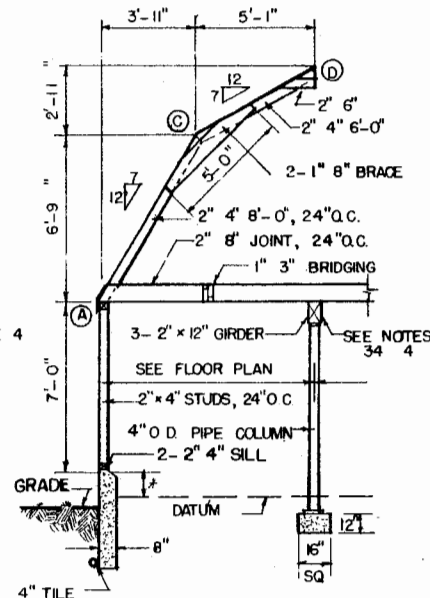
24'-0" BARN

LOOSE HAY— 0.31 TONS PER LIN. FT.
BALED HAY— MAXIMUM DEPTH 7 FT.



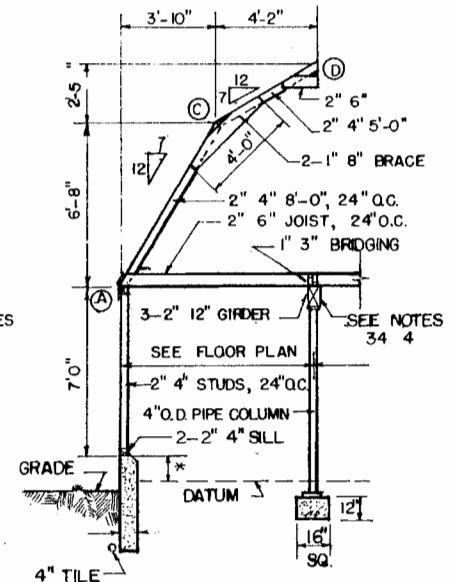
20'-0" BARN

LOOSE HAY— 0.22 TONS PER LIN. FT.
BALED HAY— MAXIMUM DEPTH 6 FT.



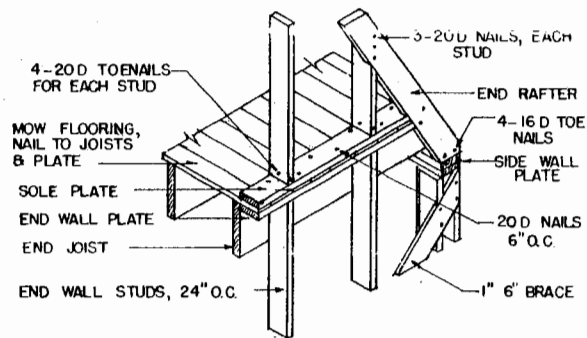
18'-0" BARN

LOOSE HAY— 0.16 TONS PER LIN. FT.
BALED HAY— MAXIMUM DEPTH 5 FT.

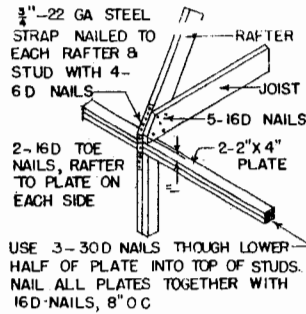


16'-0" BARN

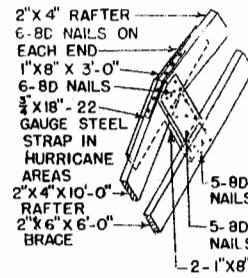
LOOSE HAY— 0.12 TONS PER LIN. FT.
BALED HAY— MAXIMUM DEPTH 5 FT.



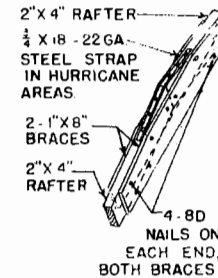
TYPICAL FRAMING FOR END WALLS



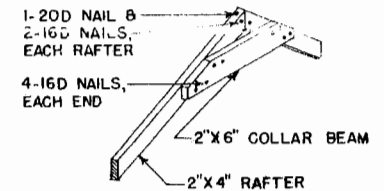
DETAIL A



DETAIL B



DETAIL C



DETAIL D

- NOTES:
1. "VARIABLE DIMENSION," SEE FOUNDATION DETAIL— DWG. 5661
 2. USE 3- 2" x 12" GIRDERS IF COLUMNS ARE SPACED 11'- 0" OR LESS APART
 3. USE 3- 2" x 10" GIRDERS IF COLUMNS ARE SPACED 10'-6" OR LESS APART.
 4. COLUMN SPACING NOT TO EXCEED 12'-0".

5. WHERE CENTER GIRDER IS OMITTED, USE 2" x 12" JOISTS SPACED 24" O.C. FOR 16'-0" BARN, & 2" x 10" JOISTS SPACED 12" O.C. FOR 18'- 0" BARN.
6. WALL FOUNDATIONS TO EXTEND BELOW FROST TO SOLID GROUND. CARRY COLUMN FOOTINGS TO SOLID GROUND.



BRACED RAFTER FRAMING
SPANS 16FEET TO 24FEET

ENGINEER	SCALE
DRAWN BY	SHEET 1 OF 1
TRACED BY D.A. & R.B.	DATE 1-9-76 NO. 56 25

Disclaimer

This site makes available conceptual plans that can be helpful in developing building layouts and selecting equipment for various agricultural applications. These plans do not necessarily represent the most current technology or construction codes. They are not construction plans and do not replace the need for competent design assistance in developing safe, legal and well-functioning agricultural building system. The LSU Agriculture Center, the Mid-West Plan Service, the United States Department of Agriculture and none of the cooperating land-grant universities warranty these plans.