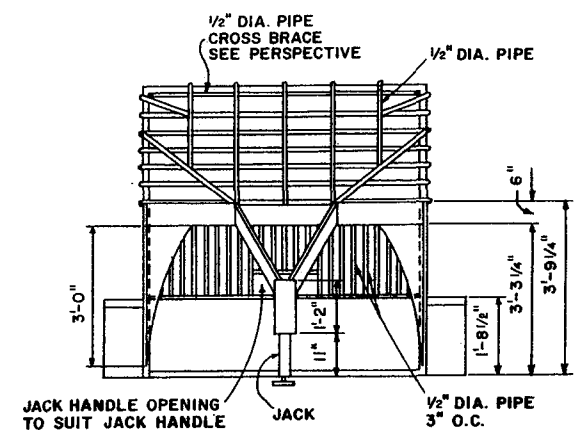
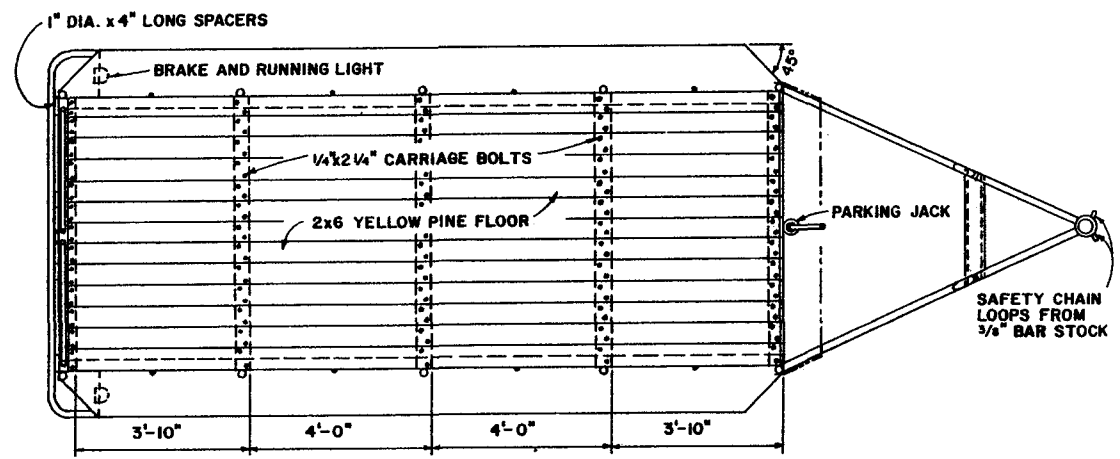


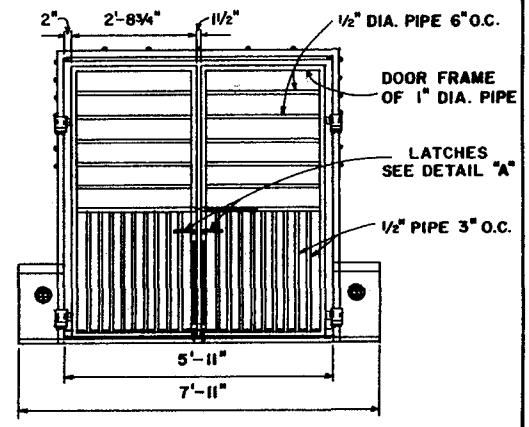
SIDE VIEW



FRONT VIEW




SECTION A-A

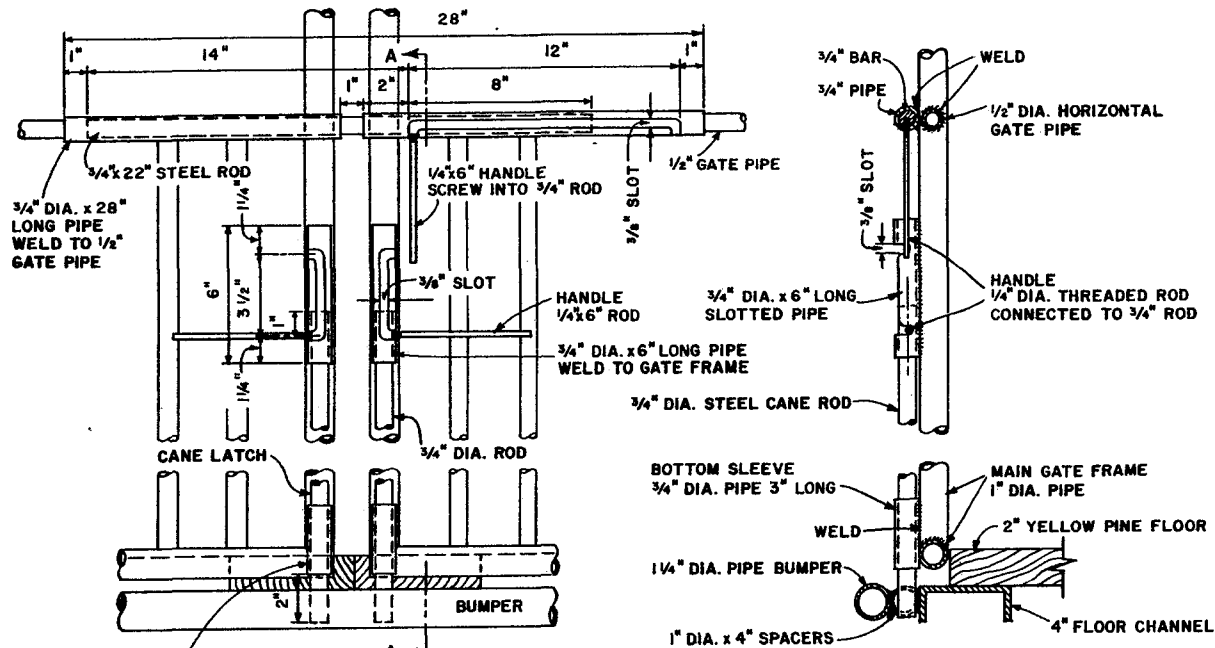


REAR VIEW

SCALE: 1/2"=1'-0" UNLESS OTHERWISE NOTED

		
TRAILER FOR CATTLE GOOSENECK TYPE		
TEXAS '72	6141	SHEET 1 OF 2

BASED ON: TEXAS A & M UNIV.
PLAN NO. 551



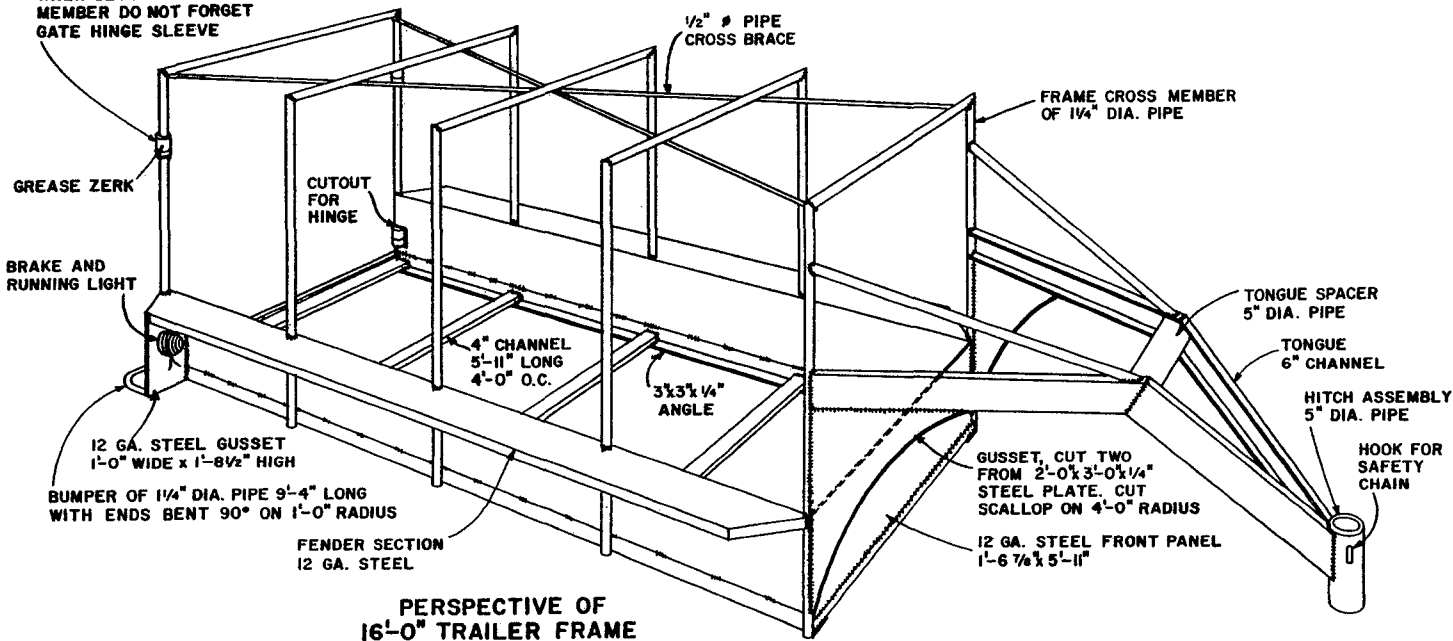
NOTE #1:
CHECK YOUR PICKUP OR TRUCK FOR THE DISTANCE BETWEEN OUTSIDE REAR BUMPER OR CORNER OF BED TO POINT OVER AXLE IN CENTER OF BED. MAKE THE DISTANCE BETWEEN HITCH AND TRAILER 2'-0" LONGER THAN YOUR MEASUREMENT. TO EXTEND INCREASE LENGTH OF THE DOWNWARD ANGLED 6" CHANNELS.

NOTE #2:
THE CARRIAGE ASSEMBLY OF YOUR CHOICE MAY BE USED IN TANDEM
1. STRAIGHT AXLE AND NO SPRINGS
2. STRAIGHT AXLE AND LEAF SPRINGS
3. FOR HIGHWAY USE MAINLY, A DROP AXLE MAY BE USED.

NOTE #3:
CAUTION: THE EXPECTED MAXIMUM LOAD WILL APPROACH 7 TONS. THEREFORE, SPECIFY EACH AXLE AND WHEEL ASSEMBLY TO CARRY 3 1/2 TONS HIGHWAY AND NON HIGHWAY USE, WHEN ORDERING FROM CARRIAGE MANUFACTURER. TIRES SHOULD BE 8 PLY AND MATCHED TO AXLE AND USE.
THIS DESIGN HEIGHT IS FOR CATTLE, IF HORSES ARE TO BE HAULED FREQUENTLY RAISE HEIGHT 6".

GATE LATCH
SCALE: 3"=1'-0"

NOTE:
WHEN SETTING REAR CROSS MEMBER DO NOT FORGET GATE HINGE SLEEVE



TRAILER FOR CATTLE
GOOSENECK TYPE

TEXAS '72 6141 SHEET 2 OF 2

Disclaimer

This site makes available conceptual plans that can be helpful in developing building layouts and selecting equipment for various agricultural applications. These plans do not necessarily represent the most current technology or construction codes. They are not construction plans and do not replace the need for competent design assistance in developing safe, legal and well-functioning agricultural building system. The LSU Agriculture Center, the Mid-West Plan Service, the United States Department of Agriculture and none of the cooperating land-grant universities warranty these plans.