

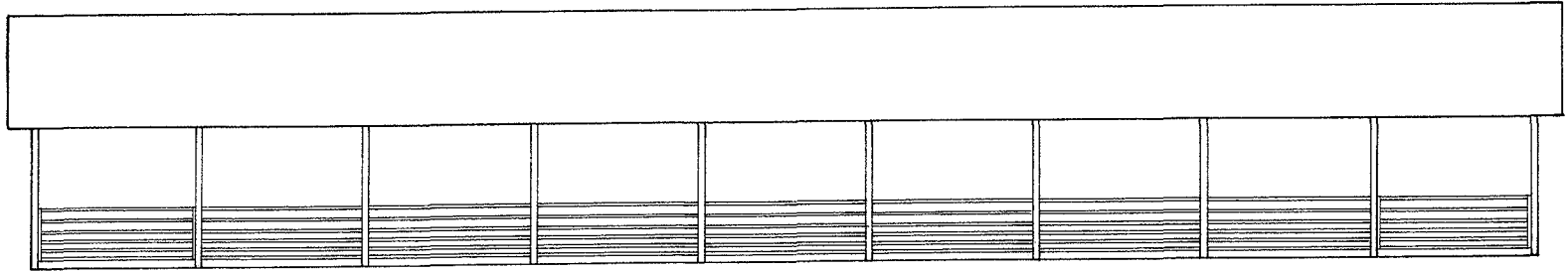
NOTE  
EACH 48'-0" PEN  
OF THE BLDG WILL  
HAVE A STRUCTURAL  
SYSTEM AS SHOWN  
ABOVE

OPTIONAL  
CONSTRUCTION OF  
CABLE FENCING MAY  
BE USED AS PEN  
DIVIDERS -- REFER  
TO NO. 6162

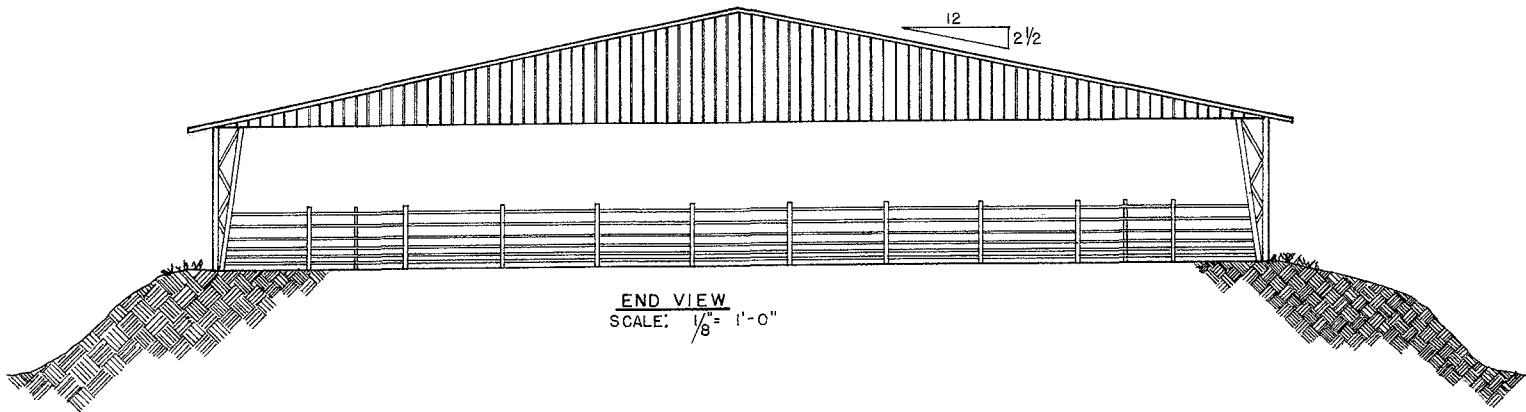
FLOOR AND FOUNDATION PLAN  
SCALE: 1/8" = 1'-0"



CONFINEMENT BEEF BARN TOTAL SLATED WITH BUNK FEEDERS	
ENGINEER F. E. BAKER	SCALE 1/8" = 1'-0"
DRAWN BY D.B.V.	SHEET 1 OF 5
TRACED BY D.B.V.	DATE JULY '76 No. 22-14



SIDE VIEW  
SCALE:  $\frac{1}{8}'' = 1'-0''$



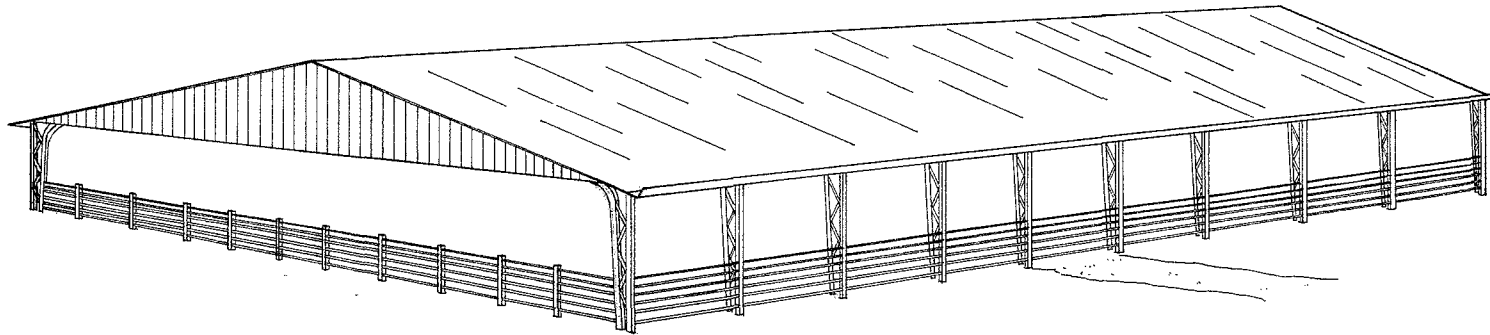
END VIEW  
SCALE:  $\frac{1}{8}'' = 1'-0''$



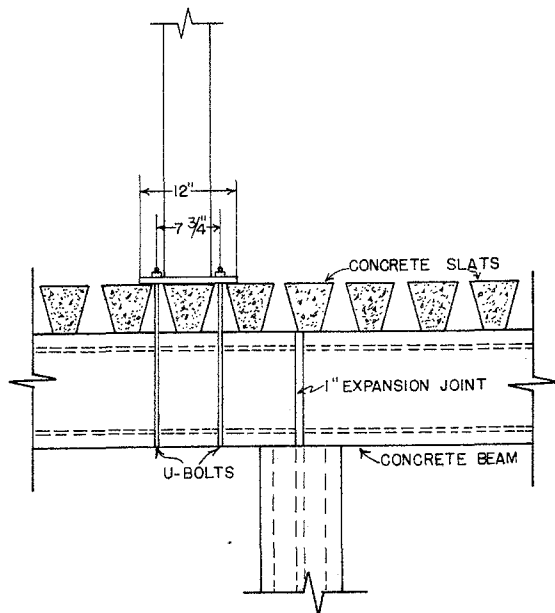
CONFINEMENT BEEF BARN  
TOTAL SLATED WITH BUNK FEEDERS

ENGINEER F.E.BAKER	SCALE $\frac{1}{8}'' = 1'-0''$
DRAWN BY D.B.V.	SHEET 2 OF 5
TRACED BY D.B.V.	DATE JULY '76 NO. 22-14

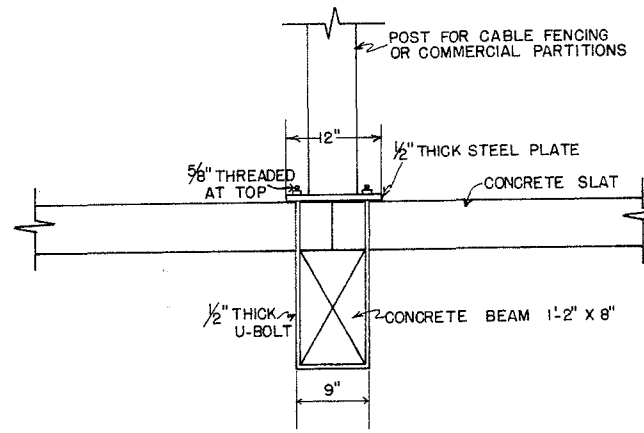




EXTERIOR PERSPECTIVE



DETAIL A  
FENCE POST CONNECTION  
SCALE: 1" = 1'-0"

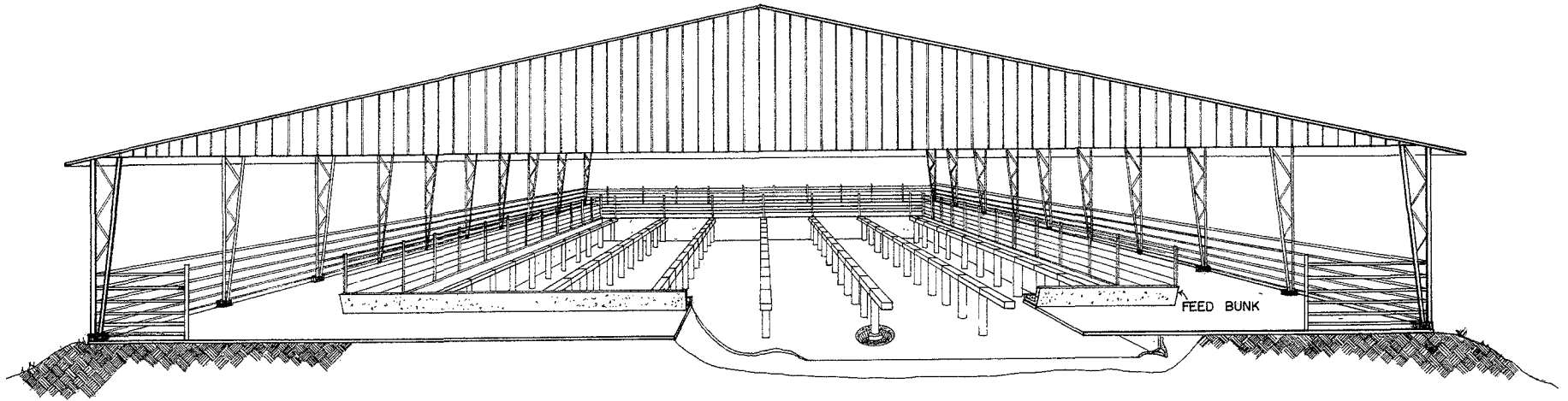


DETAIL B  
FENCE POST CONNECTION  
SCALE: 1" = 1'-0"



CONFINEMENT BEEF BARN  
TOTAL SLATED WITH BUNK FEEDERS

ENGINEER F. E. BAKER	SCALE 1" = 1'-0"
DRAWN BY D.B.V.	SHEET 4 OF 5
TRACED BY D.B.V.	DATE JULY '76 NO. 22-14



CUTAWAY PERSPECTIVE

**CONCRETE TANK NOTES**

**CROSS WALLS:** REINFORCED FOR A PRESSURE OF 60 PCF-FLUID.

**PERIMETER WALLS:** REINFORCED FOR A PRESSURE OF SOIL WITH MODERATE DRAINAGE (EQUIV. OF 30 PCF-FLUID). IF HIGHEST WATER TABLE AT BUILDING SITE IS MORE THAN 2' ABOVE PIT FLOOR LEVEL, INSTALL FOOTING TILE AND SUMP PUMP TO RELIEVE PRESSURE OR CHECK WITH ENGINEER FOR AMOUNT OF ADDITIONAL REINFORCING.

**WALL THICKNESS:** AN 8" THICK WALL REQUIRES MORE STEEL THAN A 6" THICK WALL BECAUSE OF RELATIONSHIP BETWEEN EXPANSION-CONTRACTION AND THE VOLUME OF CONCRETE. AN 8" THICK WALL MAY STILL BE LOWER COST BECAUSE OF DIFFICULTY OF PLACING STEEL AND CONCRETE IN 6" FORMS.

**PRECAUTIONS:** THIS DESIGN IS SAFE FOR MANY BUILDING SITES. THE GREATEST DANGER OF A WALL FAILURE IS DURING BACKFILLING. BEAMS AND SLATS BE IN PLACE BEFORE BACKFILLING. TEMPORARY BRACING COULD BE USED TO HELP WITHSTAND WATER PRESSURE FROM A HEAVY RAIN OR VEHICLE WHEEL LOADS DURING BACKFILLING.



**CONFINEMENT BEEF BARN**  
TOTAL SLATED WITH BUNK FEEDERS

ENGINEER F. E. BAKER	SCALE _____
DRAWN BY D. B. V.	SHEET 5 OF 5
TRACED BY D. B. V.	DATE JULY '76 NO. 22-14

## Disclaimer

This site makes available conceptual plans that can be helpful in developing building layouts and selecting equipment for various agricultural applications. These plans do not necessarily represent the most current technology or construction codes. They are not construction plans and do not replace the need for competent design assistance in developing safe, legal and well-functioning agricultural building system. The LSU Agriculture Center, the Mid-West Plan Service, the United States Department of Agriculture and none of the cooperating land-grant universities warranty these plans.