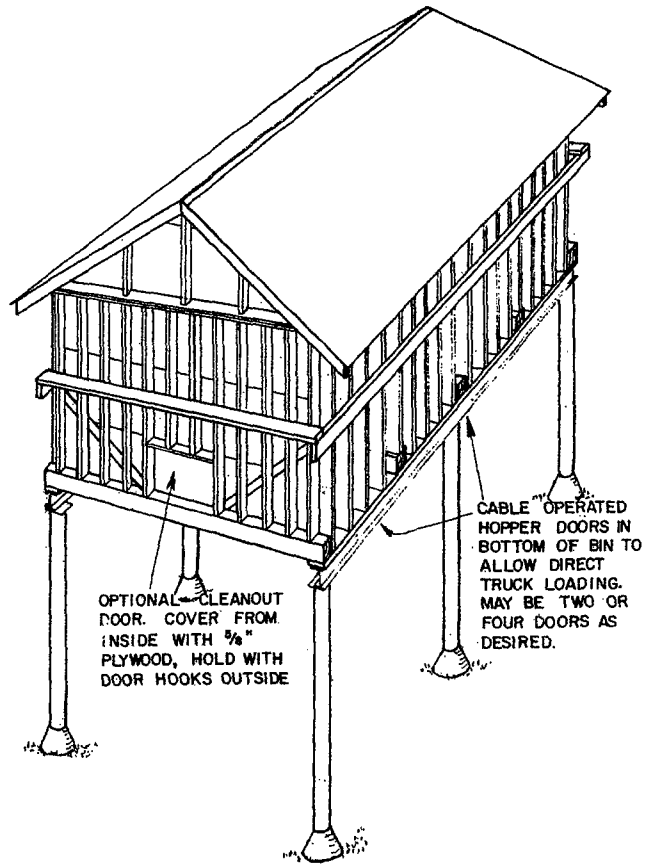


FOUNDATION PLAN



OPTIONAL CLEANOUT DOOR. COVER FROM INSIDE WITH 3/8" PLYWOOD, HOLD WITH DOOR HOOKS OUTSIDE

CABLE OPERATED HOPPER DOORS IN BOTTOM OF BIN TO ALLOW DIRECT TRUCK LOADING. MAY BE TWO OR FOUR DOORS AS DESIRED.

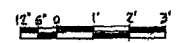
PERSPECTIVE

STORAGE BIN FOR SAWDUST FROM SAWMILL
DIRECT LOADING INTO LARGE DUMP TRUCKS
CLEARANCE 14', EXCEPT FOR HIGH CUBE TRAILERS (13'-6" HIGH)—PROVIDE 16' CLEARANCE

FINISH

BIN CAN BE PAINTED, BUT IS BEST LEFT UNFINISHED. PRESERVE WOOD BY APPLICATIONS OF PENTACHLOROPHENOL (PENTA), ESPECIALLY TO PROTECT END GRAIN OF EXPOSED WOODEN PIECES.

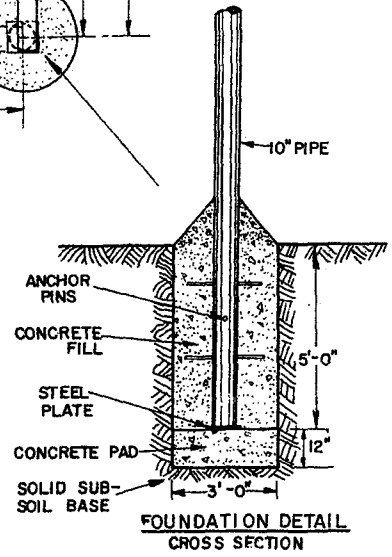
3500 CU. FT



SCALE: 3/8"=1'-0" UNLESS OTHERWISE NOTED.

DESIGN FROM BIN BUILT BY WADE COCHRAN, MCKEAN COUNTY

PLAN LAYOUT IN CONSULTATION WITH ROE S. COCHRAN

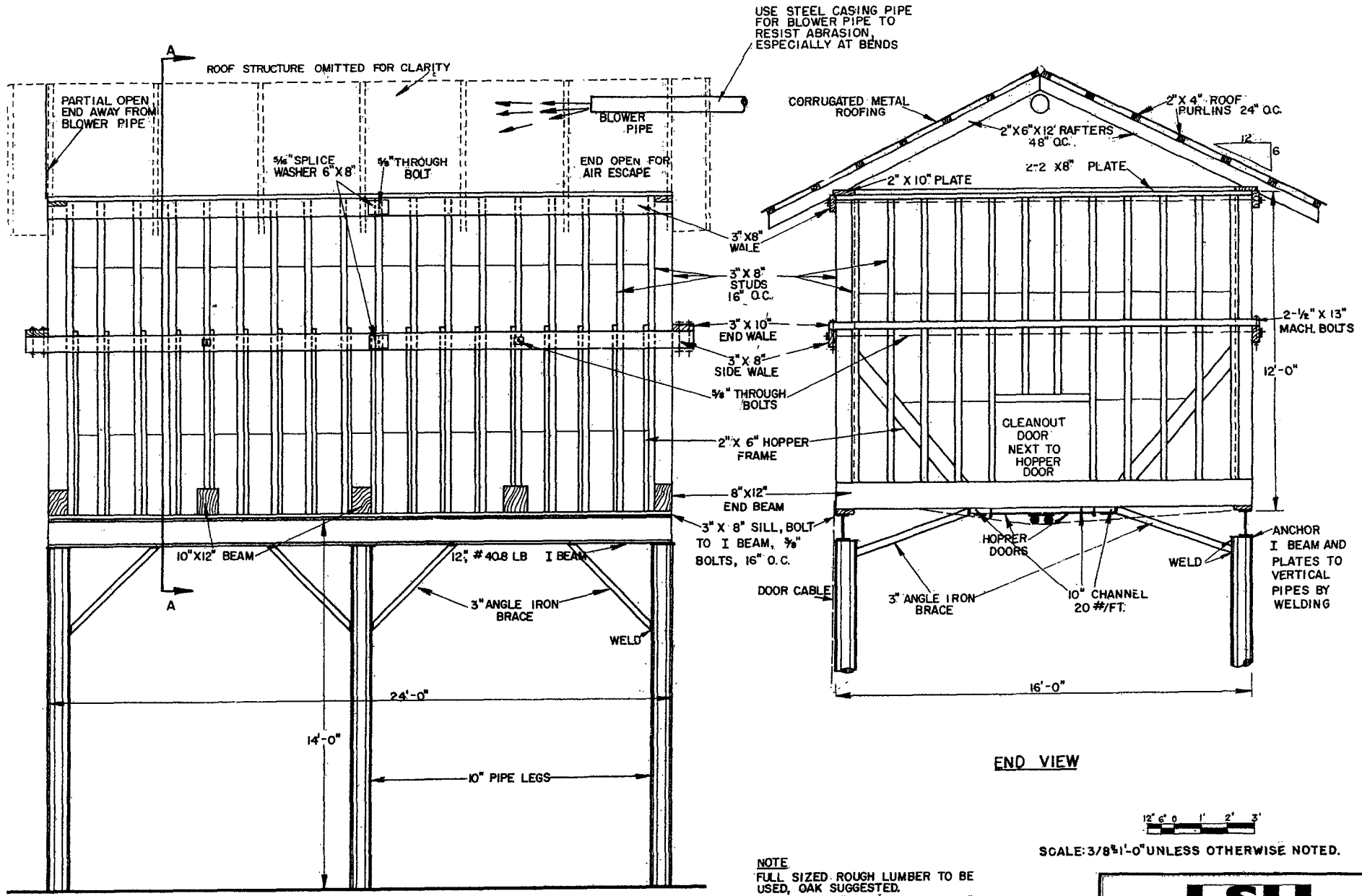


FOUNDATION DETAIL CROSS SECTION

NOTE:
CONSULT LOCAL HEALTH AND BUILDING CODE AUTHORITIES BEFORE STARTING CONSTRUCTION.

EXTEND FOOTINGS TO FIRM BASE BELOW FROST LINE

LSU AgCenter Research & Extension		
ELEVATED SAWDUST BIN		
PA '77	6276	SHEET 1 OF 3



SIDE VIEW

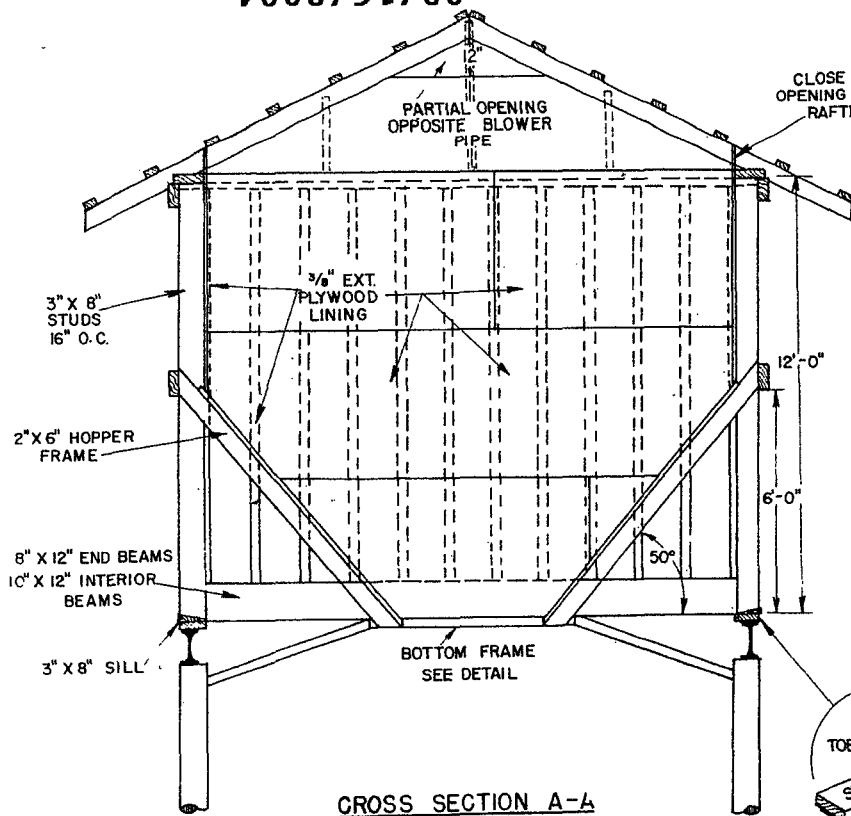
END VIEW



SCALE: 3/8" = 1'-0" UNLESS OTHERWISE NOTED.

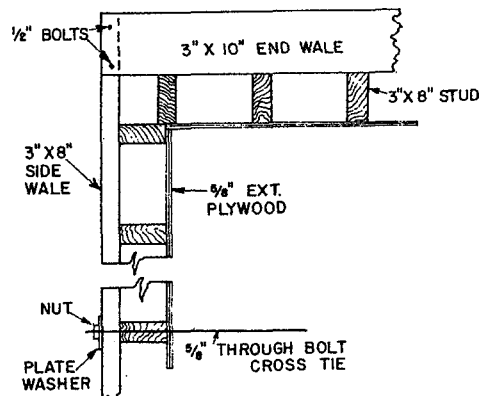
NOTE
 FULL SIZED ROUGH LUMBER TO BE USED, OAK SUGGESTED.
 BIN LINER - 5/8" EXT. PLYWOOD OR 1" LUMBER LINED WITH 28 GAUGE GALVANIZED STEEL.

LSU AgCenter Research & Extension			
ELEVATED SAWDUST BIN			
PA	'77	6 276	SHEET 2 OF 3

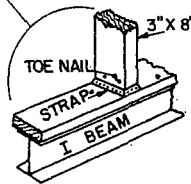


CROSS SECTION A-A

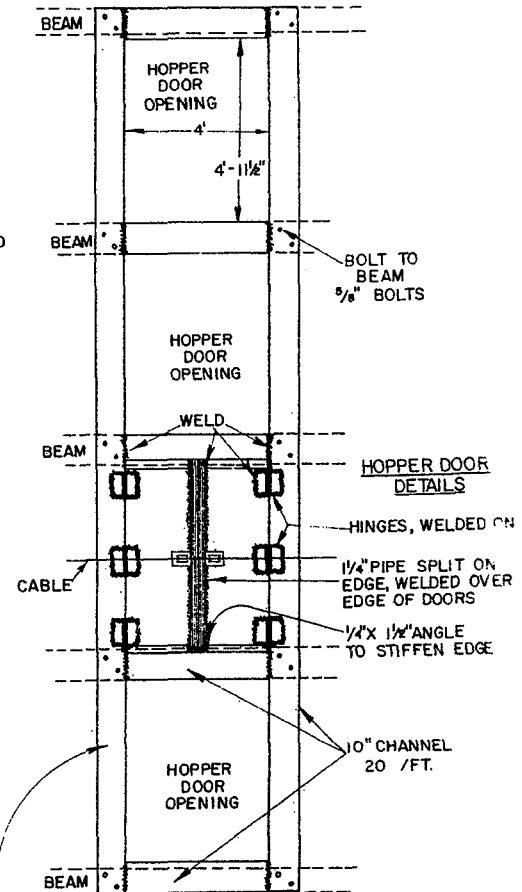
SCALE: 3/8" = 1'
 12" 6" 0 1' 2' 3'



WALL & CORNER DETAIL



STUD DETAIL
 TOENAIL TO SILL,
 USE 24\"/>

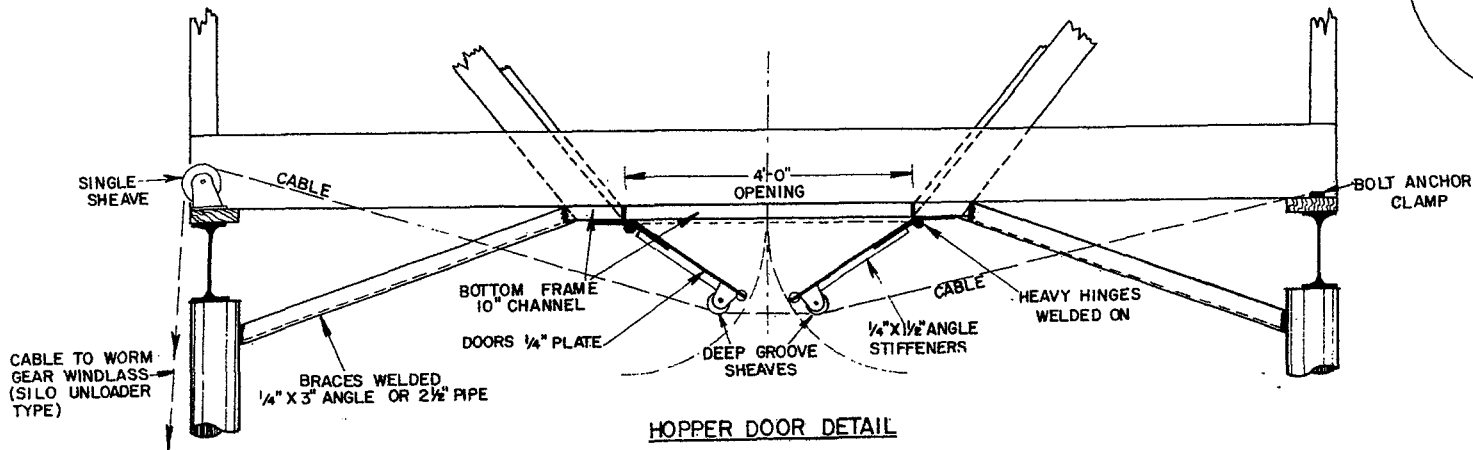


BOTTOM FRAME DETAIL

VIEW FROM BELOW

SCALE: 3/8" = 1'
 12" 6" 0 1' 2' 3'

NOTE: FOUR HOPPER DOORS WORK BEST, BUT TWO CAN BE USED. IN HOPPER OPENINGS WITHOUT DOORS, USE A FLOOR OF 2\"/>



HOPPER DOOR DETAIL

12" 6" 0 1' 2' 3'

SCALE: 3/4" = 1'-0" UNLESS OTHERWISE NOTED.



ELEVATED SAWDUST BIN

PA. '77 6 2 7 6 SHEET 3 OF 3

Disclaimer

This site makes available conceptual plans that can be helpful in developing building layouts and selecting equipment for various agricultural applications. These plans do not necessarily represent the most current technology or construction codes. They are not construction plans and do not replace the need for competent design assistance in developing safe, legal and well-functioning agricultural building system. The LSU Agriculture Center, the Mid-West Plan Service, the United States Department of Agriculture and none of the cooperating land-grant universities warranty these plans.