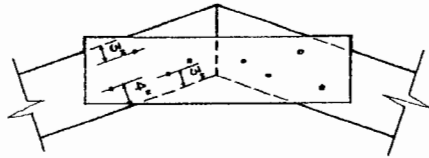
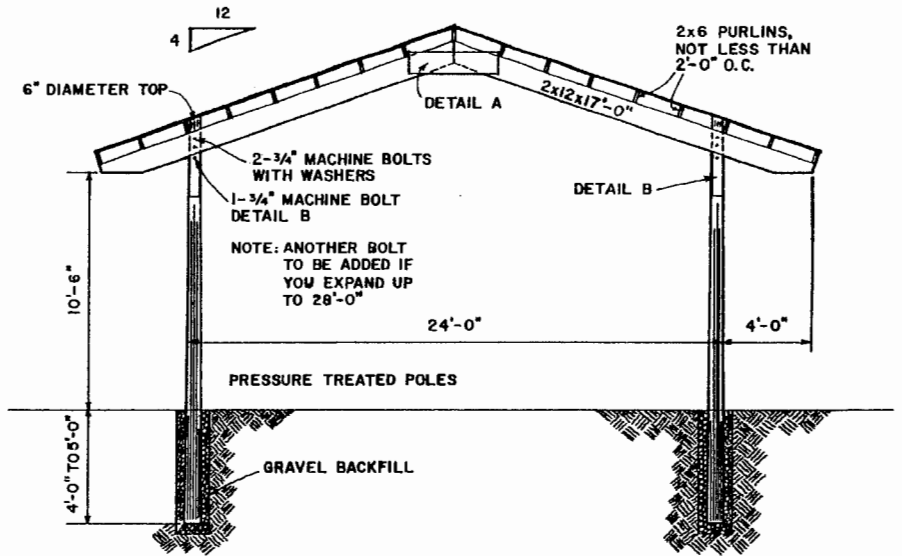


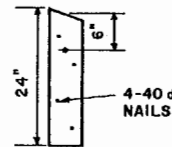
2x12x4'-0" TIES ON BOTH SIDES OF RAFTERS BOLTED TOGETHER WITH 3/4"x6 1/2" MACHINE BOLTS WITH WASHERS



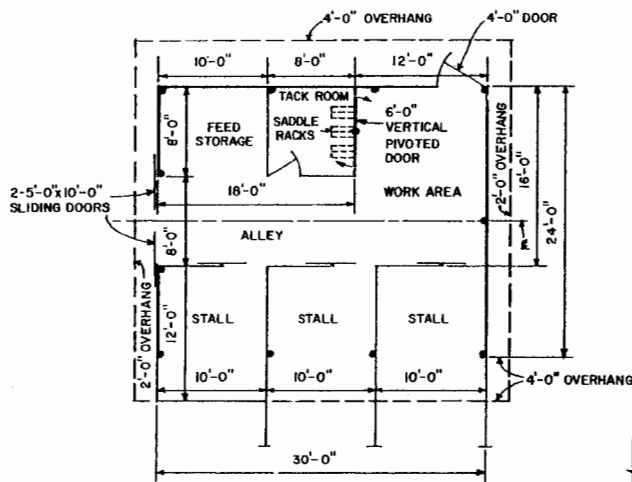
**DETAIL A**  
2x12x4'-0" TIES  
SCALE: 3/4"=1'-0"



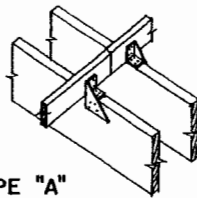
**SECTION**  
SCALE: 1/4"=1'-0"



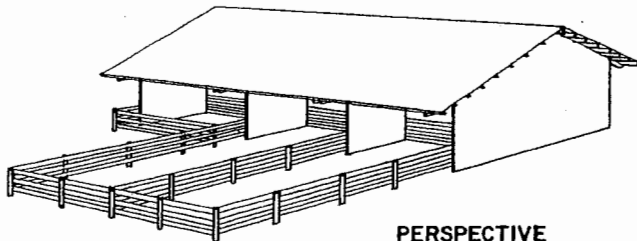
**DETAIL B**  
2x6  
SCALE: 3/4"=1'-0"



**PLAN**  
SCALE: 1/8"=1'-0"



**TYPE "A" ANCHORS**



**PERSPECTIVE**

**BILL OF MATERIALS FOR BUILDING WITHOUT WALLS OR PARTITIONS**

- 12-2x12x17'-0" RAFTERS
- 3-2x12x16'-0" TIES DETAIL A.
- 36-2x6x12'-0" PURLINS & DETAIL B.
- 17-2x6x10'-0" PURLINS
- 8-6" DIAMETER x 18'-0" OR 6x6x18'-0" PRESSURE TREATED POLES.
- 3-6" DIAMETER x 20'-0" OR 6x6x20'-0" PRESSURE TREATED POLES.
- 48-40d COMMON NAILS
- 102-PIECES OF TYPE A METAL ANCHORS FOR HOLDING PURLINS IN PLACE, OR 2x4x16" PIECES MAY BE SUBSTITUTED. NAILS FOR METAL OR WOOD ANCHORS.
- 1156 SQUARE FEET OF ROOFING.
- 68'-0" OF GUTTERS.
- 48-3/4"x6 1/2" MACHINE BOLTS WITH WASHERS
- 24-3/4"x10" MACHINE BOLTS WITH WASHERS

END POLES REQUIRE A RAFTER FASTENED ON INSIDE OF POLE, ALL OTHERS REQUIRE TWO RAFTERS ON EACH SIDE OF POLE.  
ADDITIONAL POST OR POLES AND LUMBER REQUIRED AS NECESSARY FOR PARTITIONS AND PENS. PARTITIONS CAN BE MADE WITH 2" LUMBER, OR 1" EXTERIOR TYPE PLYWOOD.  
TACK ROOM SHOULD BE MADE RODENT PROOF. CONCRETE FLOOR IN STORAGE AREA IS PREFERRED. USE HORSE PROOF AND RODENT PROOF GRAIN STORAGE.  
A SLATTED FENCE PROVIDES A BETTER WIND BREAK THAN A SOLID FENCE.  
THIS PLAN MAY BE LENGTHENED OR SHORTENED BY 10'-0".



**HORSE BARN**

BASED ON: OREGON STATE UNIV.  
BLDG. PLAN 102

ORE. '71 **6107** SHEET 1 OF 1

## Disclaimer

This site makes available conceptual plans that can be helpful in developing building layouts and selecting equipment for various agricultural applications. These plans do not necessarily represent the most current technology or construction codes. They are not construction plans and do not replace the need for competent design assistance in developing safe, legal and well-functioning agricultural building system. The LSU Agriculture Center, the Mid-West Plan Service, the United States Department of Agriculture and none of the cooperating land-grant universities warranty these plans.