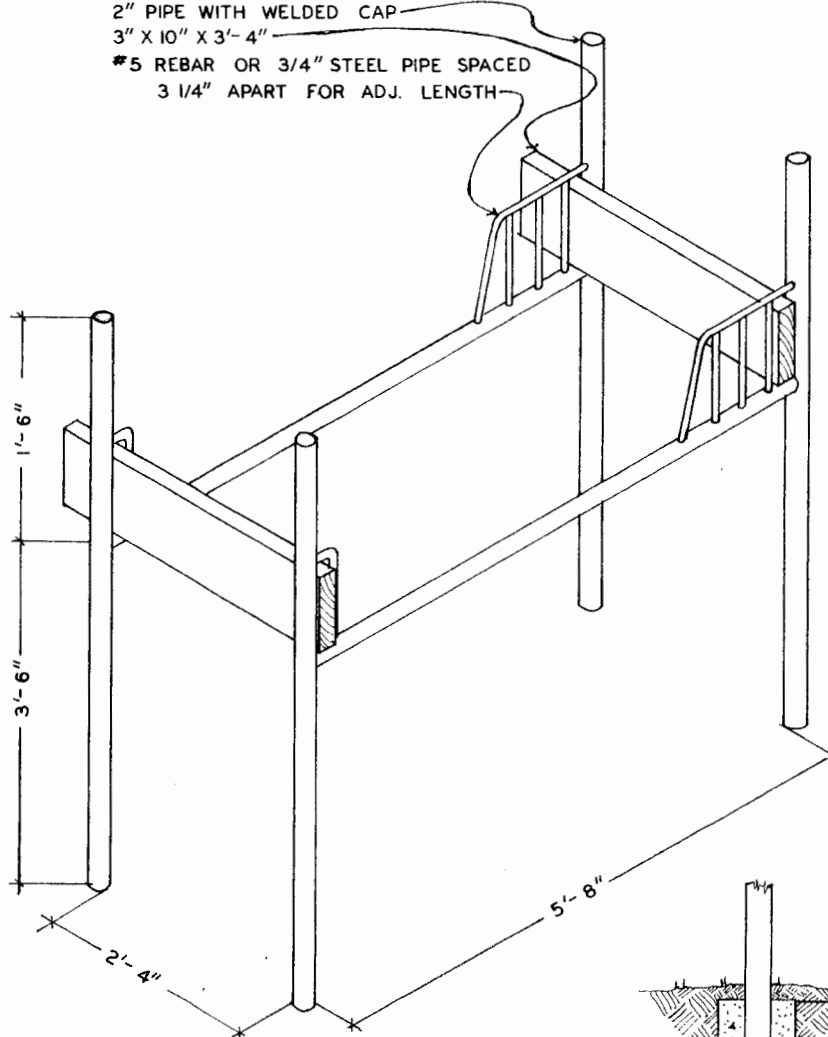


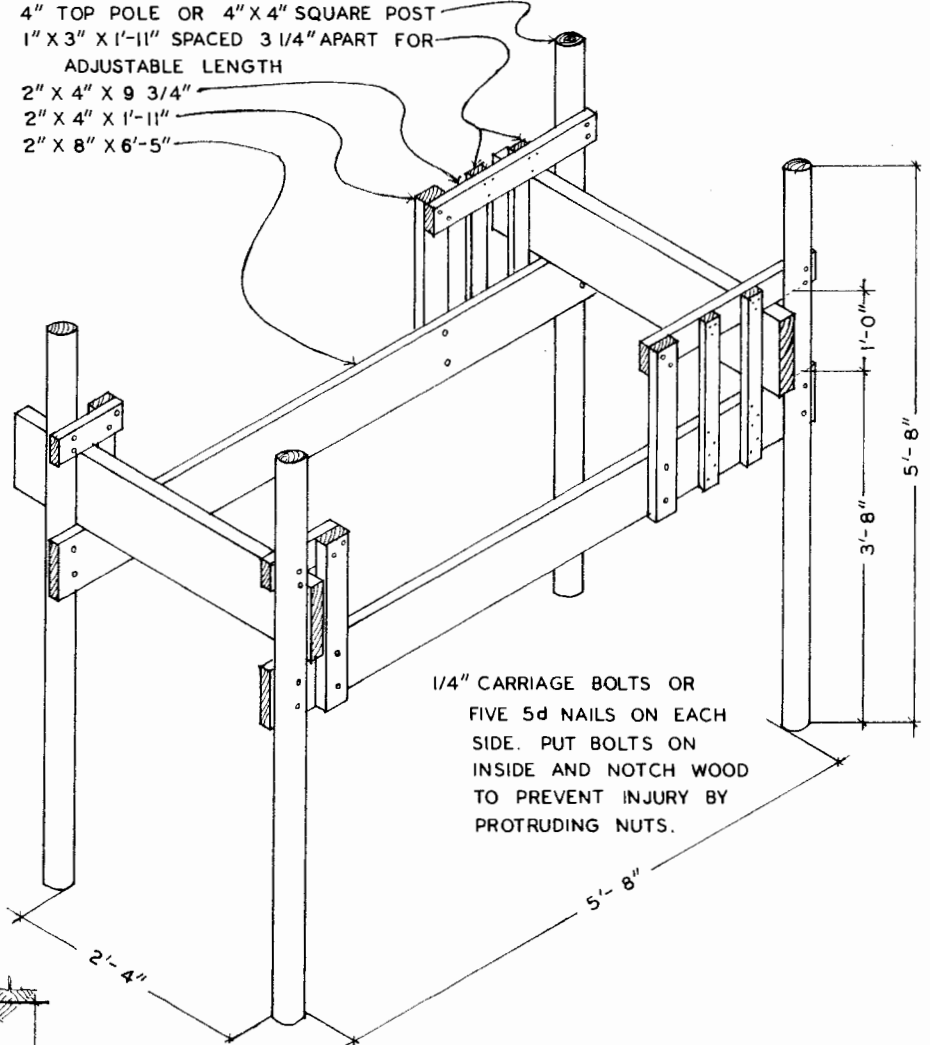
METAL CONSTRUCTION

- 2" PIPE WITH WELDED CAP
- 3" X 10" X 3'-4"
- #5 REBAR OR 3/4" STEEL PIPE SPACED 3 1/4" APART FOR ADJ. LENGTH



WOOD CONSTRUCTION

- 4" TOP POLE OR 4" X 4" SQUARE POST
- 1" X 3" X 1'-11" SPACED 3 1/4" APART FOR ADJUSTABLE LENGTH
- 2" X 4" X 9 3/4"
- 2" X 4" X 1'-11"
- 2" X 8" X 6'-5"



1/4" CARRIAGE BOLTS OR FIVE 5d NAILS ON EACH SIDE. PUT BOLTS ON INSIDE AND NOTCH WOOD TO PREVENT INJURY BY PROTRUDING NUTS.

BILL OF MATERIALS

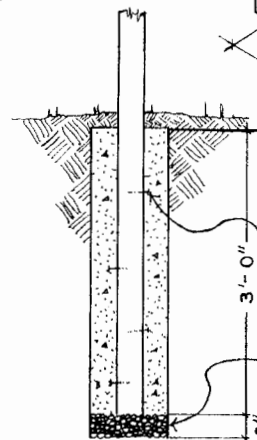
METAL CONSTRUCTION

- 23' TWO INCH PIPE
- 14 FEET OF #5 REBAR
- SEVEN FEET OF 3"X10"
- NOTE: MINIMUM PIPE SIZE IS 3/16" WALL, 2" INT. DIAMETER.

WOOD CONSTRUCTION

- FOUR FOUR-INCH POSTS EACH NINE FEET LONG
- SEVEN FEET OF 3"X10"
- 13' OF 2" X 8"
- 14' OF 2" X 4"
- EIGHT FEET OF 1" X 3"

FOOTING DETAIL



NAILS IN WOOD OR SCRAP METAL WELDED TO PIPE FOR BOND WITH CONCRETE
GRAVEL



HORSE STANCHION

ENGINEER JWB	SCALE
DRAWN BY KEME	SHEET OF
TRACED BY	DATE 6/80 NO 58-06

Disclaimer

This site makes available conceptual plans that can be helpful in developing building layouts and selecting equipment for various agricultural applications. These plans do not necessarily represent the most current technology or construction codes. They are not construction plans and do not replace the need for competent design assistance in developing safe, legal and well-functioning agricultural building system. The LSU Agriculture Center, the Mid-West Plan Service, the United States Department of Agriculture and none of the cooperating land-grant universities warranty these plans.