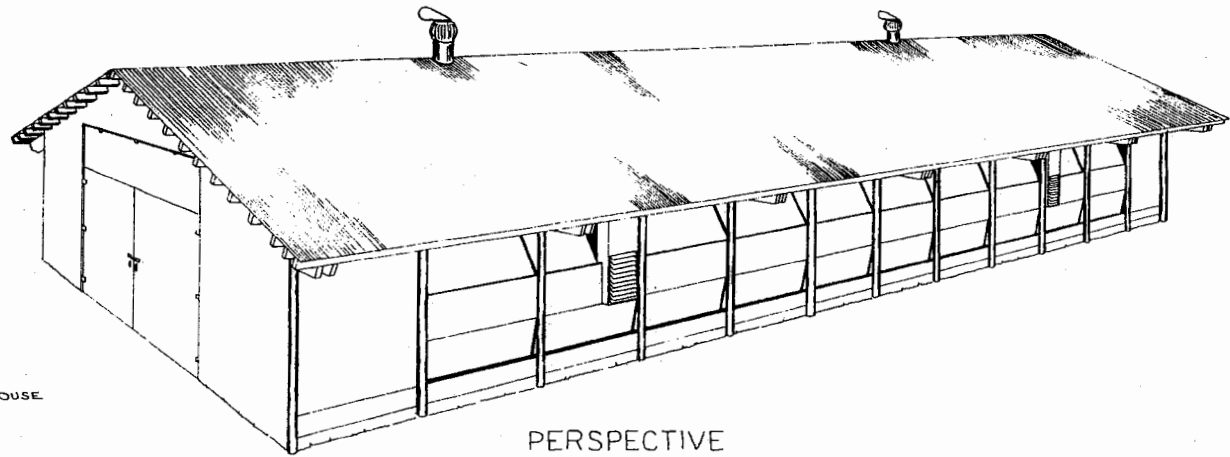


SECTION D-D
SCALE: 1/2" = 1'-0"



PERSPECTIVE

NOTES:

LENGTH OF BUILDING MAY BE VARIED IN UNITS OF 16 FEET.

ALL POSTS AND WOOD IN CONTACT WITH THE GROUND TO BE PRESURE-TREATED WITH PRESERVATIVE TO A RETENTION OF 6 LBS PER CU FT. EQUIP WITH AN ADEQUATE LIGHTNING PROTECTION SYSTEM WHERE NEEDED.

FRAMING AROUND FAN SHOULD BE CUT TO FIT SIZE OF FAN USED.

PANEL CONSTRUCTION - 2" x 4" FRAME COVERED ON BOTH SIDES WITH 3/8" EXTERIOR PLYWOOD. INSIDE OF PANEL TO HAVE A 4 TO 6 MIL POLYETHYLENE VAPOR BARRIER NEXT TO THE INSULATION.

VENTILATION REQUIREMENTS -

WINTER:

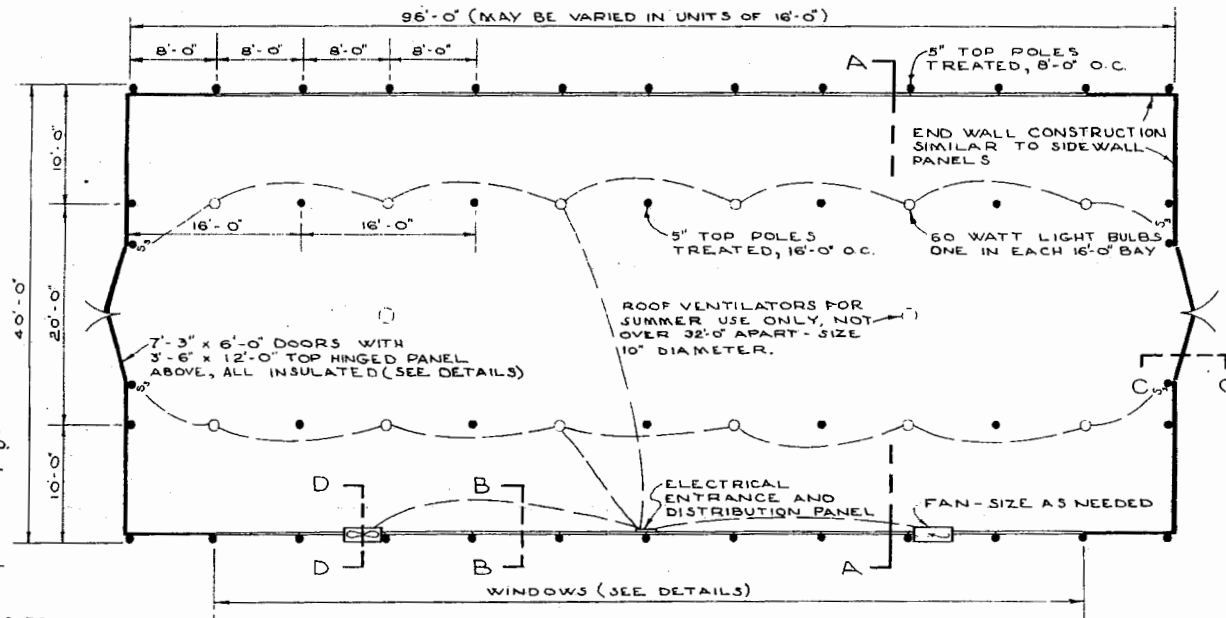
1. CLOSE BOTTOM PANELS TIGHT
2. OPEN TOP PANELS TO ALLOW A CRACK ABOUT 1/2" WIDE.
3. CLOSE ALL VENTILATION PANELS ON SIDE WHERE FANS ARE LOCATED.

FAN OPERATES CONTINUOUSLY - CAPACITY 01 CFM PER BIRD.

BALANCE OF VENTILATION PROVIDED BY LARGE FANS - CAPACITY 3 CFM PER BIRD. THESE FANS TO BE CONTROLLED BY HUMIDISTAT, THERMOSTAT, TIME CLOCK, OR A COMBINATION OF ANY OF THESE.

SUMMER:

1. OPEN SIDEWALL AND ROOF VENTS TO TAKE ADVANTAGE OF NATURAL AIR MOVEMENTS.
2. RELOCATE VENT FANS DOWN MIDDLE OF BUILDING TO STIR AIR.



PLAN
SCALE: 1/8" = 1'-0"

WIRING REQUIREMENTS:

- 100 FT. CIRCUIT WITH 60 W. LAMPS EACH 16 FT. - 360W. - NO. 12 WIRE
- 150 FT. CIRCUIT WITH 60 W. LAMP EACH 16 FT. - 540 W. - NO. 12 WIRE
- 200 FT. CIRCUIT WITH 60 W. LAMP EACH 16 FT. - 750 W. - NO. 10 WIRE

FOR CIRCUITS OVER 200 FT, CONSULT ENGINEER OR POWER SUPPLIER.

LOCATE ENTRANCE EQUIPMENT AND DISTRIBUTION PANEL AT MIDDLE OF THE BUILDING WHEN LENGTH EXCEEDS 200 FEET.

LEGEND:

- S₃ - THREE-WAY SWITCH
- O - 60 WATT LAMP WITH REFLECTOR

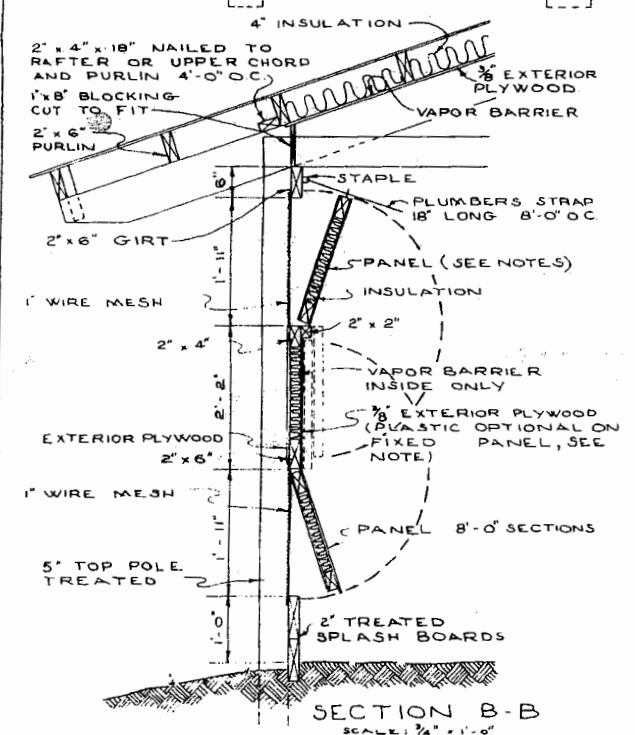


BROILER HOUSE
40 FT WIDTH - POLE CONSTRUCTION

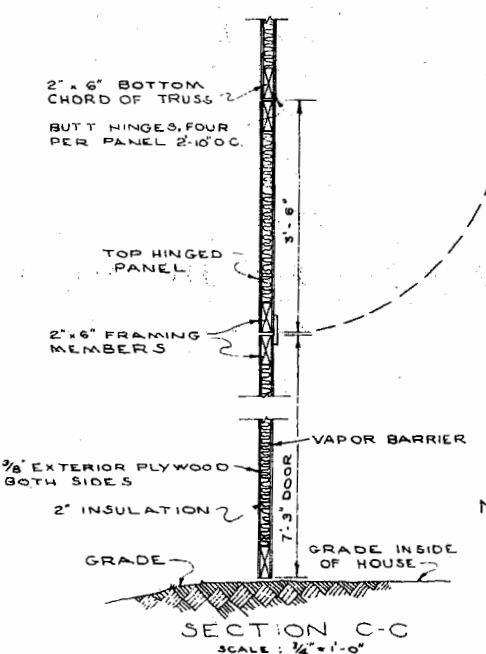
ARK. '64 EX. 5972 SHEET 1 OF 3



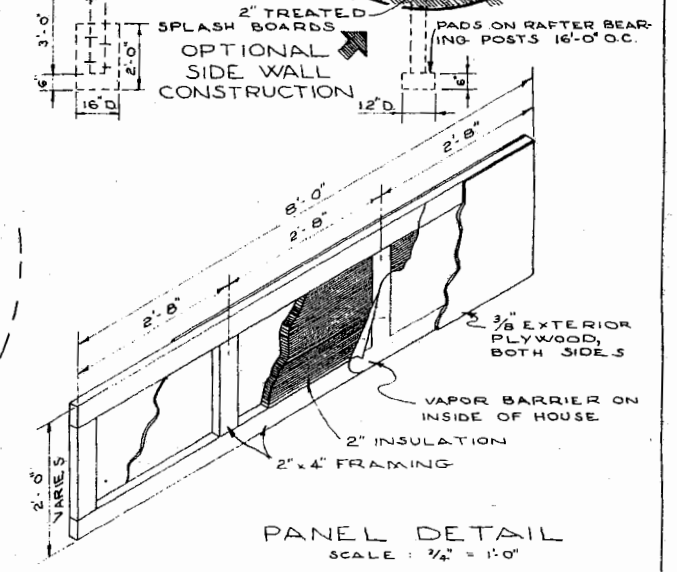
SECTION A-A
SCALE: 1/8" = 1'-0"



SECTION B-B
SCALE: 1/4" = 1'-0"




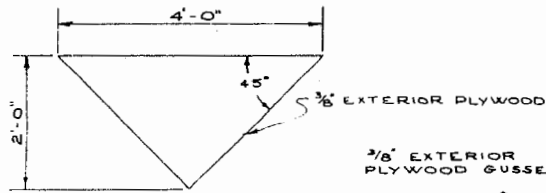
SECTION C-C
SCALE: 1/4" = 1'-0"



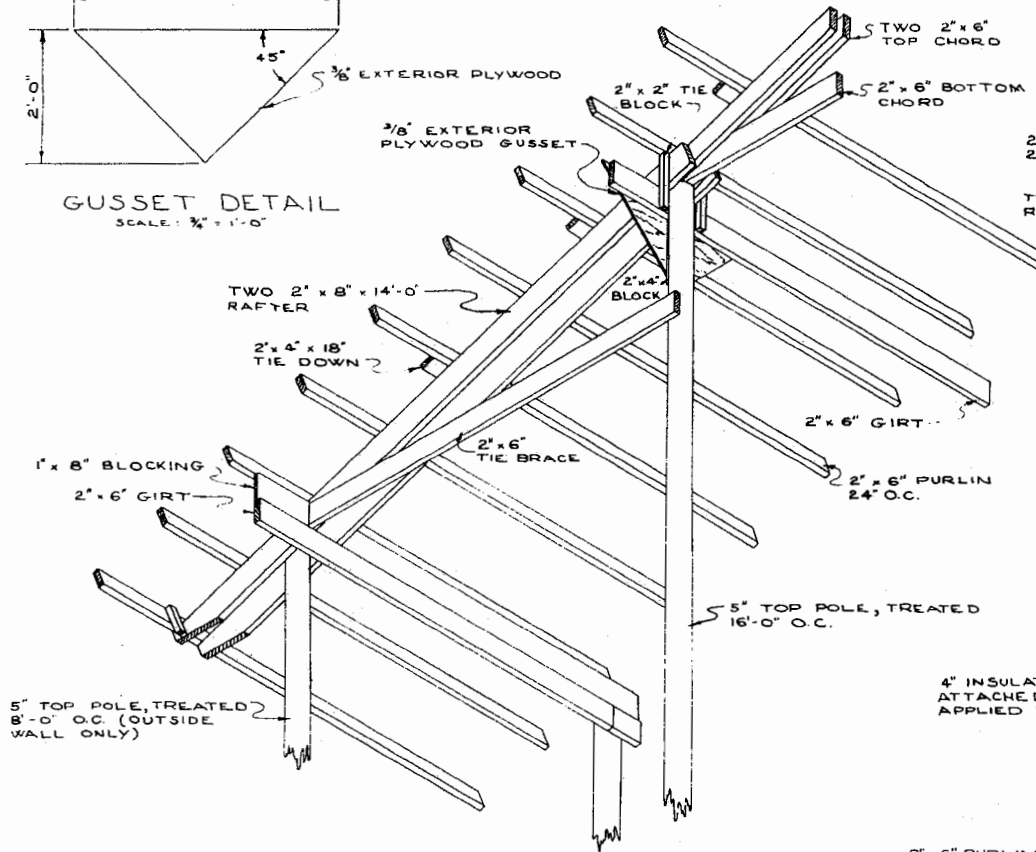
PANEL DETAIL
SCALE: 1/4" = 1'-0"

NOTE:
IF ADDITIONAL LIGHT IS DESIRED INSIDE OF HOUSE, REPLACE PLYWOOD WITH PLASTIC FILM AND OMIT INSULATION IN FIXED WALL PANEL.

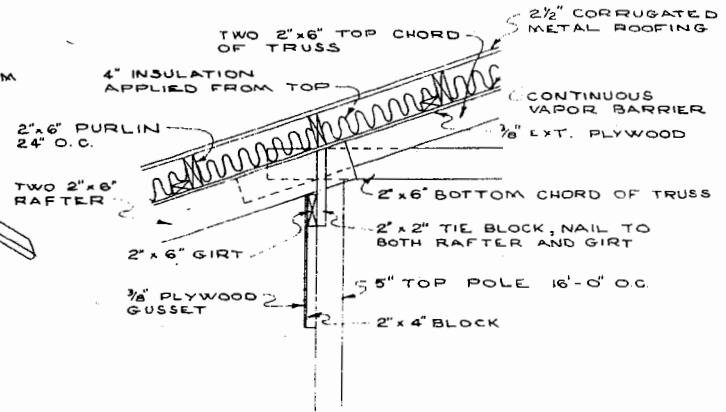
 LSU AgCenter <small>RESEARCH & EXTENSION</small>		
BROILER HOUSE 40 FT WIDTH - POLE CONSTRUCTION		
ARK. '64	EX. 5972	SHEET 2 OF 3



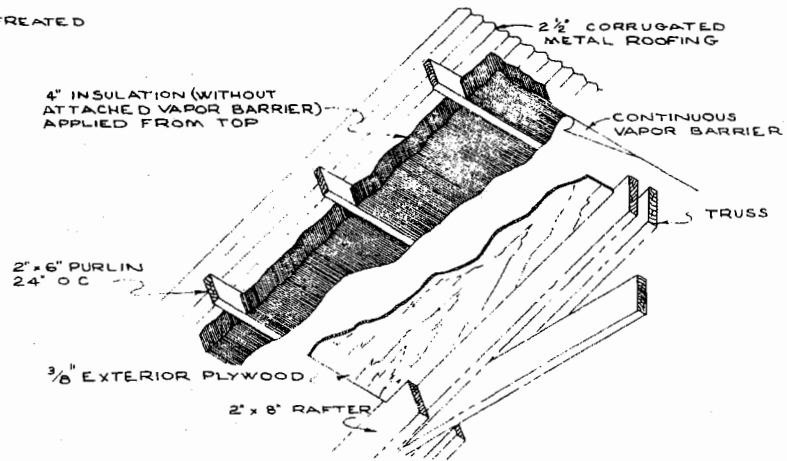
GUSSET DETAIL
SCALE: 3/4" = 1'-0"



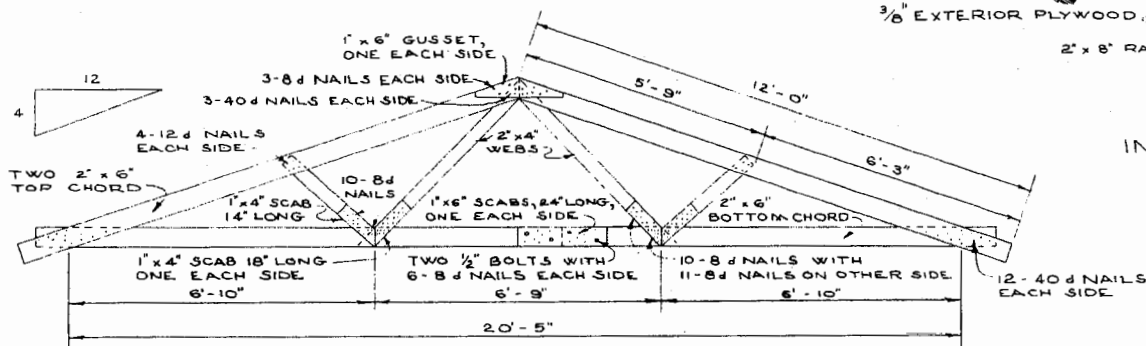
VIEW OF ROOF FRAMING
SCALE: 1/2" = 1'-0"



TRUSS-RAFTER CONNECTION
SCALE: 3/4" = 1'-0"



INSULATION DETAIL
SCALE: 3/4" = 1'-0"



TRUSS DETAIL
SCALE: 1/2" = 1'-0"



Disclaimer

This site makes available conceptual plans that can be helpful in developing building layouts and selecting equipment for various agricultural applications. These plans do not necessarily represent the most current technology or construction codes. They are not construction plans and do not replace the need for competent design assistance in developing safe, legal and well-functioning agricultural building system. The LSU Agriculture Center, the Mid-West Plan Service, the United States Department of Agriculture and none of the cooperating land-grant universities warranty these plans.