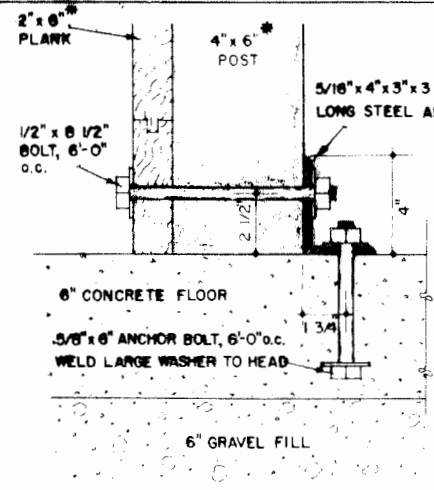
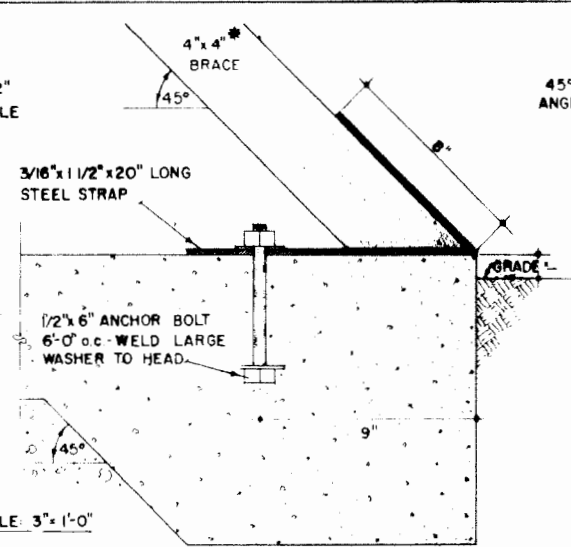


WALL SECTION SCALE: 3/4" = 1'-0"

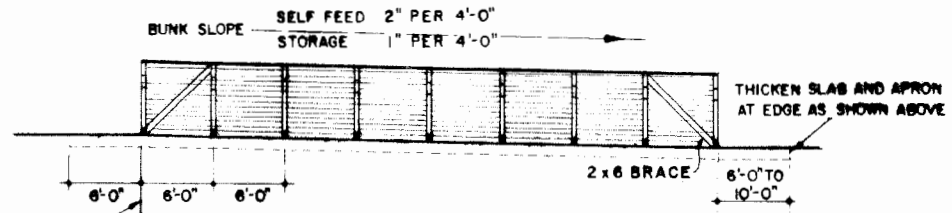


DETAILS A & B

SCALE: 3" = 1'-0"



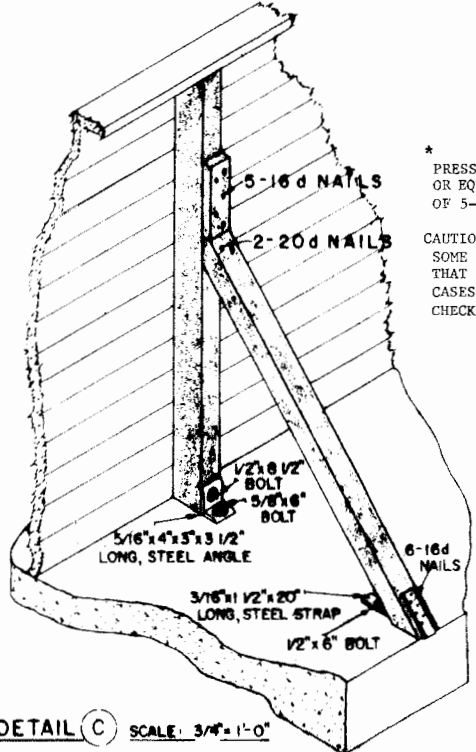
BRACE CUTTING DETAIL SCALE: 1 1/2" = 1'-0"



SIDE ELEVATION SCALE: 1/8" = 1'-0"

DIMENSIONS TAKEN OUTSIDE FIRST POST TO CENTER OF INTERIOR POSTS

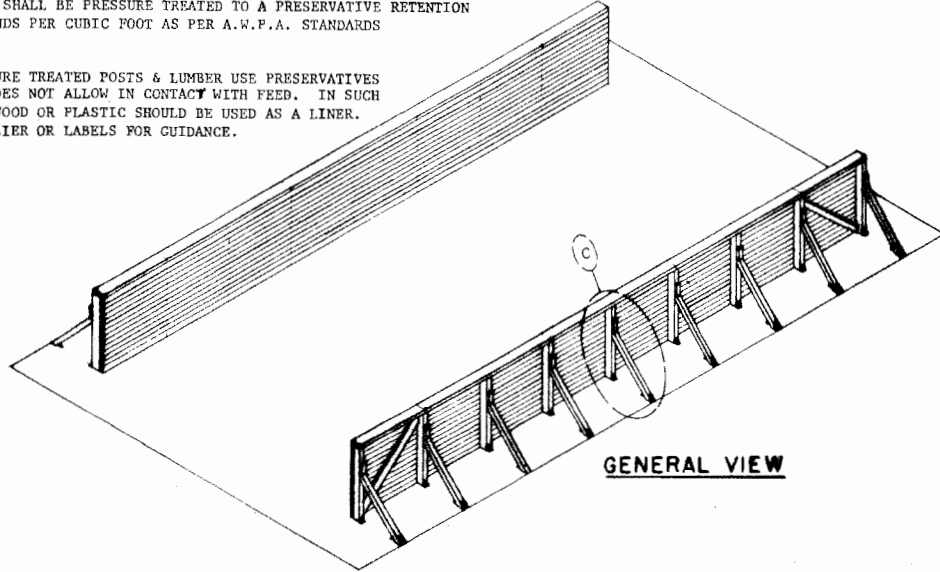
LENGTH MAY BE INCREASED OR DECREASED IN 6'-0" INCREMENTS



DETAIL C SCALE: 3/4" = 1'-0"

* PRESSURE TREATED MATERIAL SHALL BE CONSTRUCTION GRADE DOUGLAS FIR OR EQUAL & SHALL BE PRESSURE TREATED TO A PRESERVATIVE RETENTION OF 5-7 POUNDS PER CUBIC FOOT AS PER A.W.P.A. STANDARDS

CAUTION: SOME PRESSURE TREATED POSTS & LUMBER USE PRESERVATIVES THAT EPA DOES NOT ALLOW IN CONTACT WITH FEED. IN SUCH CASES, PLYWOOD OR PLASTIC SHOULD BE USED AS A LINER. CHECK SUPPLIER OR LABELS FOR GUIDANCE.



GENERAL VIEW

NOTES

- GENERAL**
1. SITE LOCATION TO BE WELL DRAINED
 2. IF SELF-FEEDING IS DESIRED, ORDER PLAN 5872, "SELF-FEEDING FENCES"
 3. IF SOLID END WALL IS DESIRED, USE 2" x 6" PLANK WALL BRACED 6'-0" AS SHOWN ON THIS DRAWING.
 4. USE GALVANIZED OR CADMIUM PLATED 10d NAILS TO FASTEN PLANK TO POSTS.

- LUMBER**
1. USE "STANDARD" GRADE DOUGLAS FIR OR STRESS GRADED LUMBER WITH A MINIMUM FIBER STRESS OF 1200 p.s.i.

- CONCRETE**
1. USE 3000 p.s.i. AIR ENTRAINED MIX CONTAINING 6% AIR.
 2. SLOPE FLOOR AS INDICATED ON THE SIDE ELEVATION.

SILLO CAPACITIES

WIDTH (FEET)	LENGTH (FEET)	CAPACITY (TONS)	
			(TONS FOR EA. ADDITIONAL 4')
12	36	55	67
16	48	106	84
20	60	171	123
24	72	263	154
28	84	378	187
32	96	516	222
36	108	680	258
40	120	936	324

CAPACITIES SHOWN ARE APPROX & ARE BASED ON A SILAGE WEIGHT OF 40 LBS. PER CU. FT.

LSU AgCenter
Research & Extension

BRACED WALL SILO

CONN. '67 EX. 6021 SHEET 1 OF 1

REVISED '88

Disclaimer

This site makes available conceptual plans that can be helpful in developing building layouts and selecting equipment for various agricultural applications. These plans do not necessarily represent the most current technology or construction codes. They are not construction plans and do not replace the need for competent design assistance in developing safe, legal and well-functioning agricultural building system. The LSU Agriculture Center, the Mid-West Plan Service, the United States Department of Agriculture and none of the cooperating land-grant universities warranty these plans.