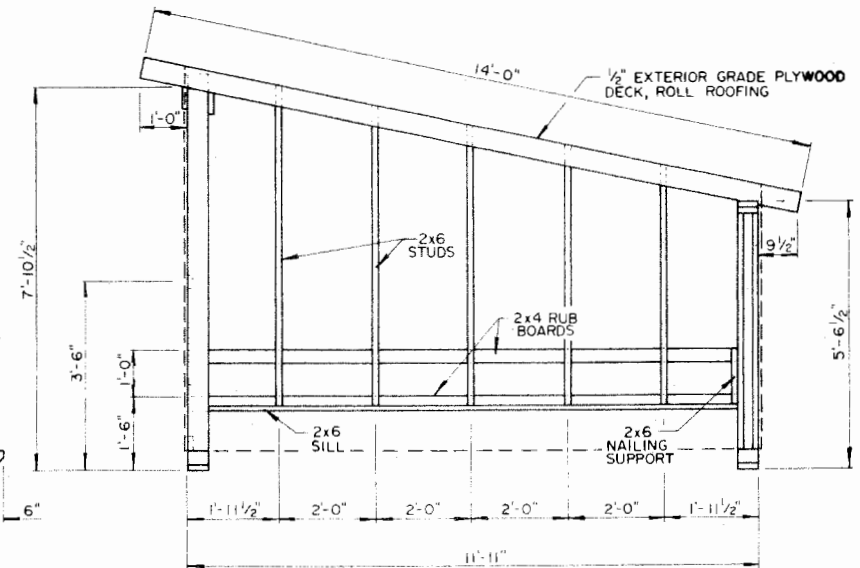
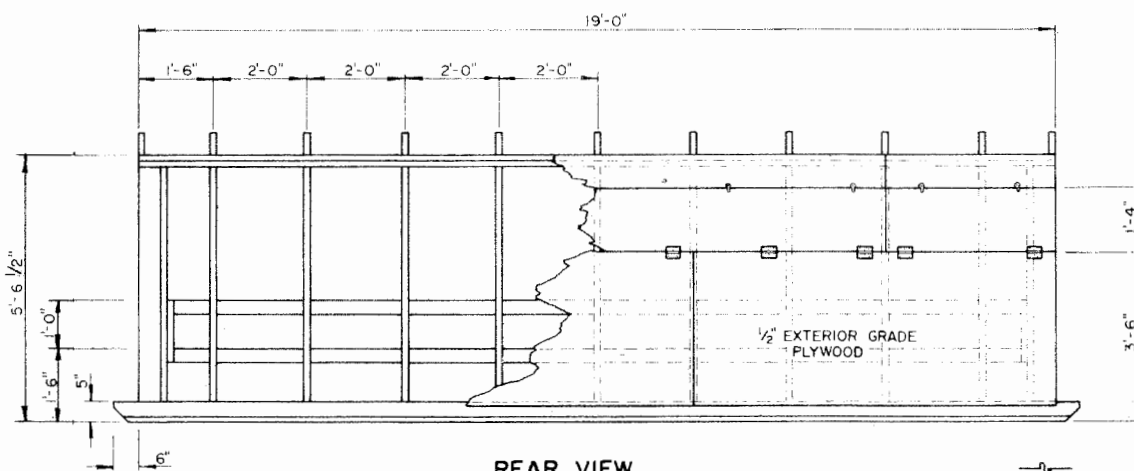


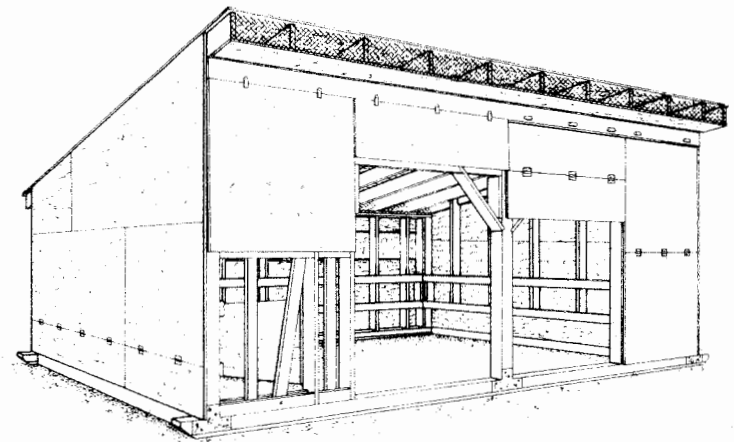
FRONT VIEW



SIDE VIEW



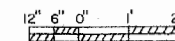
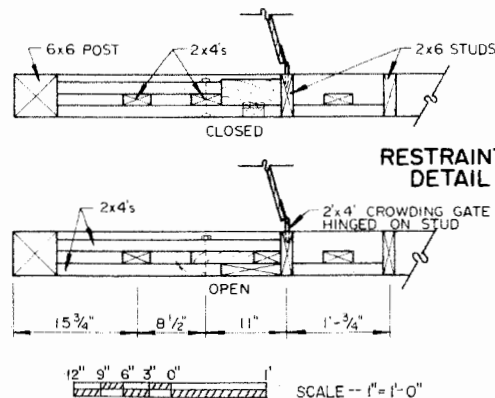
REAR VIEW



PERSPECTIVE

NOTES

1. ADJUST FRONT AND REAR HINGED PANELS ACCORDING TO WEATHER CONDITIONS.
2. FOR EXPOSED LOCATIONS PARTIAL CLOSING OF SPACE BETWEEN RAFTERS AT FRONT MAY BE NECESSARY IN WINTER.
3. PROVIDE OUTSIDE FENCED AREA FOR FEEDING AND WATERING.
4. SWING UP END PANEL THEN MOVE BUILDING TO CLEAN.
5. CAPACITY -- 8 CALVES TO ABOUT 400 LBS.
6. ANCHOR AGAINST HIGH WINDS.
7. CLOSE BOTH SIDES OF OPENINGS BETWEEN RAFTERS WITH 1/2" MESH SCREEN TO KEEP BIRDS FROM NESTING.



SCALE -- 1/2" = 1'-0" UNLESS OTHERWISE STATED



SUPER CALF HUTCH

MN 81

EX. 6342

SHEET | OF |

Disclaimer

This site makes available conceptual plans that can be helpful in developing building layouts and selecting equipment for various agricultural applications. These plans do not necessarily represent the most current technology or construction codes. They are not construction plans and do not replace the need for competent design assistance in developing safe, legal and well-functioning agricultural building system. The LSU Agriculture Center, the Mid-West Plan Service, the United States Department of Agriculture and none of the cooperating land-grant universities warranty these plans.