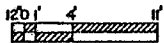
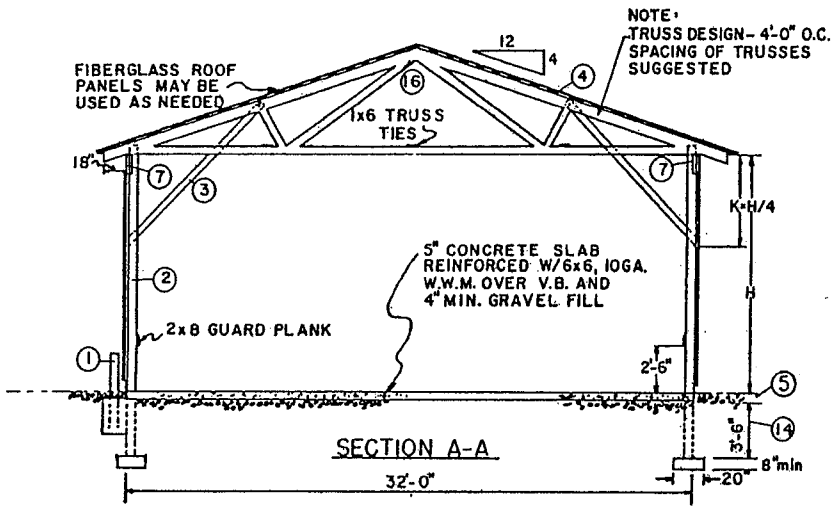


FLOOR PLAN

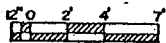


- ① 6 x 6 x 6'-0" GUARD POST
- ② PRESSURE TREATED POLES - SEE POLE SELECTION CHART
- ③ KNEE BRACE - SEE SHEET 2
- ④ METAL ROOFING OVER PURLINS, SEE SHEET 2
- ⑤ 3'-0" WIDE x 4" DEEP COARSE GRAVEL SPLASH PAD, ALL AROUND BUILDING (SLOPE WITH GRADE)
- ⑥ INSULATION OF SHOP AREA OPTIONAL (SEE DETAIL ON SHEET 2) - DIFFICULT TO JUSTIFY UNLESS ADDING HEAT. EXHAUST VENTILATION MAY BE NEEDED WHEN WORKING WITH DOORS CLOSED.
- ⑦ GIRDER, STAGGER MEMBER END JOINTS 2' ON EITHER SIDE OF 8' O.C. POLES, 3' ON EITHER SIDE OF 12' O.C. POLES. GIRDER SIZE AND NAILING AS FOLLOWS: NOTCH INTO POLES

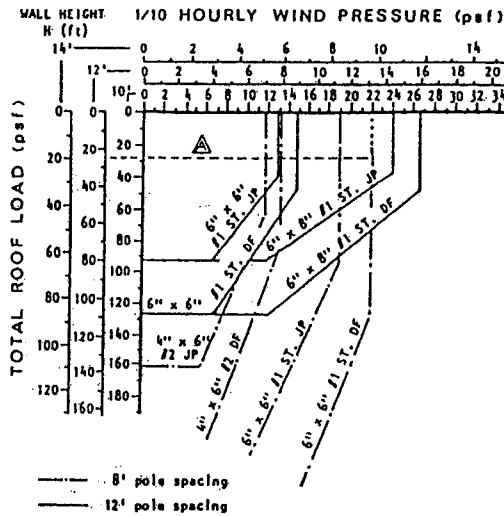
GIRDER MEMBERS	TOTAL ROOF LOAD (PSF)		# OF 3/4" NAILS, EACH SIDE OF JOINT, BOTH SIDES OF PLATE
	7/2 SPRUCE	7/2 DOUGLAS FIR	
POLES @ 8' O.C.			
2-2 x 6		30	2
2-2 x 8	32	50	4
2-2 x 10	52	78	6
2-2 x 12	80	117	9
POLES @ 12' O.C.			
2-2 x 10		35	4
2-2 x 12		53	6
2-2 x 8		26	3
2-2 x 10	28	45	4
2-2 x 12	48	69	6



SECTION A-A



NOTE: BUILDING CAN BE SHORTENED OR LENGTHENED IN ACCORDANCE WITH POLE SPACING. * SEE POLE SPACING CHART.



⑮ POLE SELECTION CHART

⑮ NOTE: EXAMPLE: ASSUME MACHINERY STORAGE WITH H=12'-0"; WIND PRESSURE = 13 psf; SNOW LOAD = 20 psf.

FROM THE ABOVE CHART*-
DEPENDING ON AVAILABILITY AND COST ANY OF THE FOLLOWING COULD BE USED:

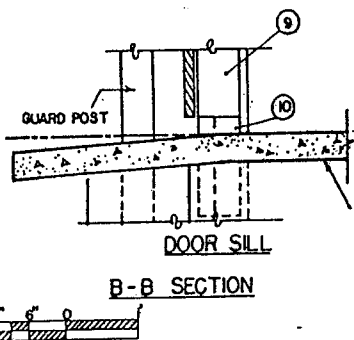
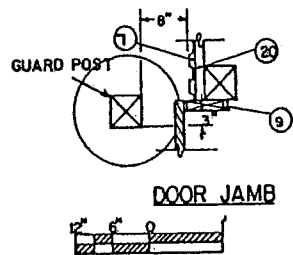
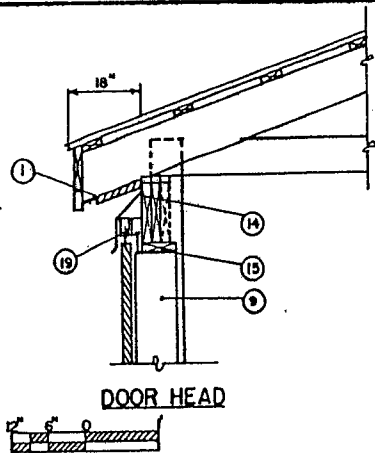
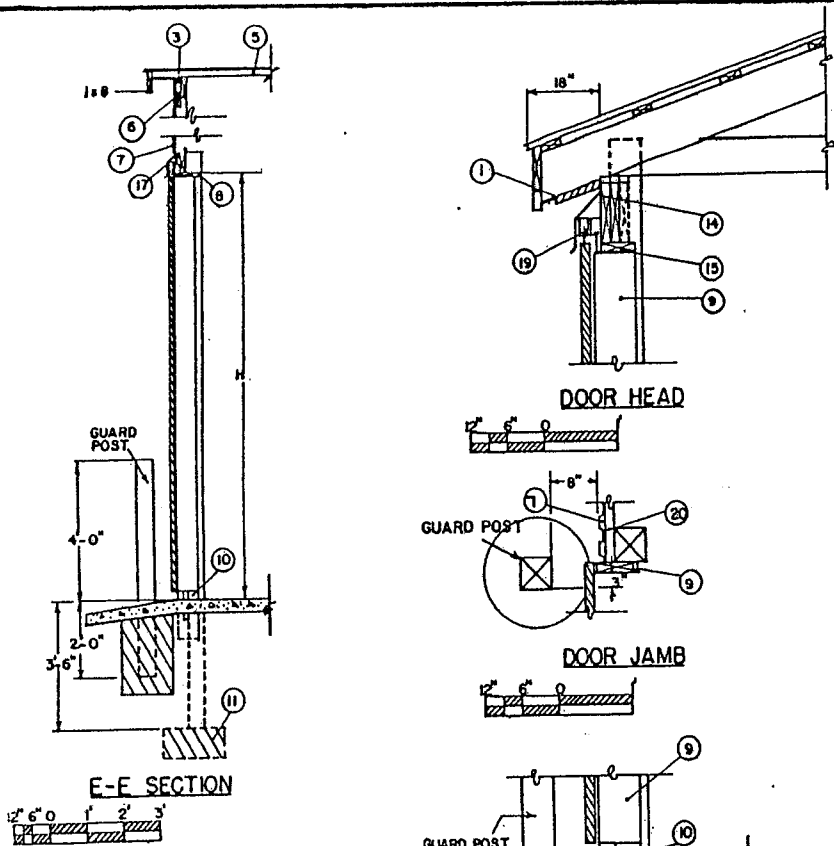
- 6x6 DOUGLAS FIR 8'-0" O.C.
- 6x8 DOUGLAS FIR 12'-0" O.C.
- 6x8 STRUCTURAL JACK PINE 12'-0" O.C.

- ⑧ 3'-0" x 6'-8" DOOR
- ⑨ DOUBLE 7'-0" SIDE SLIDING DOORS (MAY BE WIDER IF DESIRED)
- ⑩ 12'-0" WIDE MACHINERY DOOR
- ⑪ 14'-0" WIDE MACHINERY DOOR (MAY BE WIDER)
- ⑫ DOOR JAMB AT SIDE DOOR IF REQUIRED
- ⑬ 2'-0" x 6'-0" MAN-DOOR IN SLIDING DOOR
- ⑭ INCREASE TO 5'-6" WHERE FROST PENETRATION EXCEEDS 4'-0"
- ⑮ POLE SELECTION CHART - APPLIES TO 32'-0" SPAN BUILDINGS WITH 4/12 DOUBLE SLOPED ROOF, KNEE BRACING AS INDICATED.
- ⑯ PURCHASE ROOF TRUSS TO SUIT LOCAL DESIGN LOADS, 32' SPAN, WITH 18" RAFTER EXTENSION AT EAVE. SPECIFY 4' O.C. SPACING

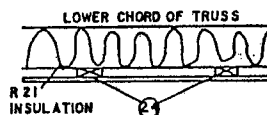
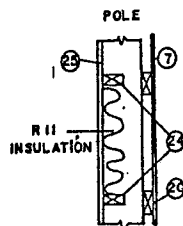
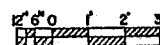
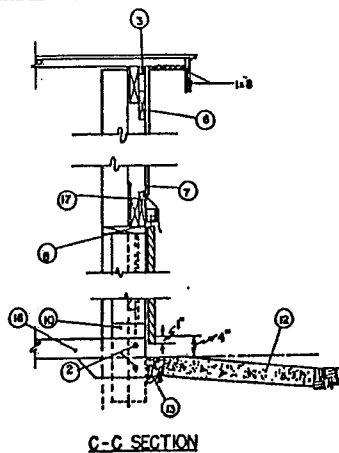


MACHINERY STORAGE
(WITH SIDE OPENING DOORS)

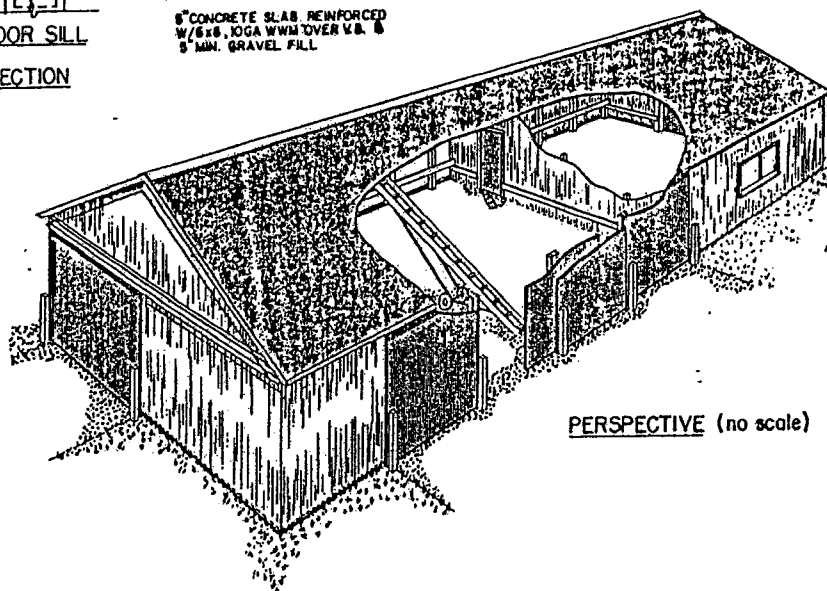
MD. 1987 6392 SHEET 1 OF 2



6" CONCRETE SLAB REINFORCED
W/6x8, 10GA W/M OVER V.B. &
5" MIN. GRAVEL FILL



WALL INSULATION ④ CEILING INSULATION



- ① 1 x 10 FACE BOARD, 2" SCREENED AIR INLET AND 3/4" PLYWOOD OR LUMBER SOFFIT
- ② 2-1/2" DIA. REBARS CONTINUOUS UNDER DOORWAYS
- ③ 2 x 2 BLOCKING
- ④ FOR INSULATED SHOP WALL, SEE INSULATION DETAIL
- ⑤ METAL ROOFING OVER 2 x 4 x 16'-0" PURLINS, 2 24" O.C. MAX. FOR ROOF LOADS UP TO 30 LBS/FT²— 16" O.C. FOR 45 LB/FT²
- ⑥ 2 x 6 GIRTS NAILED TO END TRUSS
- ⑦ VERTICAL METAL SIDING
- ⑧ 2 x 10 HEAD JAMB
- ⑨ 2 x 8 SIDE JAMB OR WIDER AS NEEDED TO COVER POST AND PLATES (BEAMS)
- ⑩ 2 x 6 x 1'-0" LONG PRESSURE TREATED DOOR STOP AT EACH SIDE OF DOOR
- ⑪ ROUND CONCRETE FOOTING, EACH POLE
- ⑫ 4" CONCRETE PAD, 3'-0" WIDE x 14'-0" LONG, IN FRONT OF DOOR, SLOPE WITH GRADE
- ⑬ GRAVEL FILL TO ALLOW FOR MOVEMENT OF CONCRETE PAD
- ⑭ GIRDER: IF A THIRD MEMBER IS REQUIRED, FIT BETWEEN POLES AND SUPPORT ON 2" SIDE JAMB, SEE SHEET 1. MATCH INTO POLES 2" MIN. DEPTH
- ⑮ 2 x 6 HEAD JAMB
- ⑯ 5" CONCRETE FLOOR IN INSULATED WORKSHOP AREA, THICKEN CONCRETE AT DOOR, CONSTRUCTION JOINTS 20'-0" O.C. BOTH WAYS
- ⑰ 2 x 8 DOOR HEADER
- ⑱ SELECT FROM CHART BELOW AND FIT SCAB BETWEEN OUTER GIRDER MEMBER AND TOP NAILING GIRT. CENTER SCAB SIZE. NAIL AS SECURELY AS POSSIBLE WITH 40d NAILS.

GIRDER MEMBER	4 x 6 POLE	6 x 6 OR 6 x 8 POLE
#2 SPRUCE		
2x8	2x4x20"	2x6x12"
2x10	2x4x30"	2x6x18"
2x12		2x6x24"
#2 DOUGLAS FIR		
2x8	2x4x24"	2x6x16"
2x10	2x4x36"	2x6x24"
2x12		2x6x30"

- ⑲ DOUBLE TRACK FOR SLIDING DOORS
- ⑳ 2 x 4 NAILING GIRTS @ 24" O.C. FROM SCAB DOWNWARD
- ㉑ 3'-0" WIDE x 5" DEEP COARSE GRAVEL SPLASH PAD, ALL AROUND BUILDING (SLOPE WITH GRADE)
- ㉒ 3 - 2x6x16'-0" TAG PRESSURE TREATED SPLASH PLANKS; STAGGER JOINTS AT 8" O.C. ON POLES
- ㉓ DOUBLE 2 x 6 KNEE BRACE, ON 2 x 6 LAPS POLE AND BUTTS TRUSS, OTHER ONE BUTTS POLE AND LAPS TRUSS (BRACES @ 8" O.C. EXCEPT WHERE POLES ARE 12" O.C. @ DOORS)
- ㉔ 2 x 4 NAILING GIRTS 24" O.C. FOR FASTENING
- ㉕ GALVANIZED STEEL OR OTHER FIRE RETARDANT INTERIOR SHEET MATERIAL

TO FROST LINE
3-6" MIN.

D-D SECTION



MACHINERY STORAGE
(WITH SIDE OPENING DOORS)

MD 1987

6392

SHEET 2 OF 2

Disclaimer

This site makes available conceptual plans that can be helpful in developing building layouts and selecting equipment for various agricultural applications. These plans do not necessarily represent the most current technology or construction codes. They are not construction plans and do not replace the need for competent design assistance in developing safe, legal and well-functioning agricultural building system. The LSU Agriculture Center, the Mid-West Plan Service, the United States Department of Agriculture and none of the cooperating land-grant universities warranty these plans.