

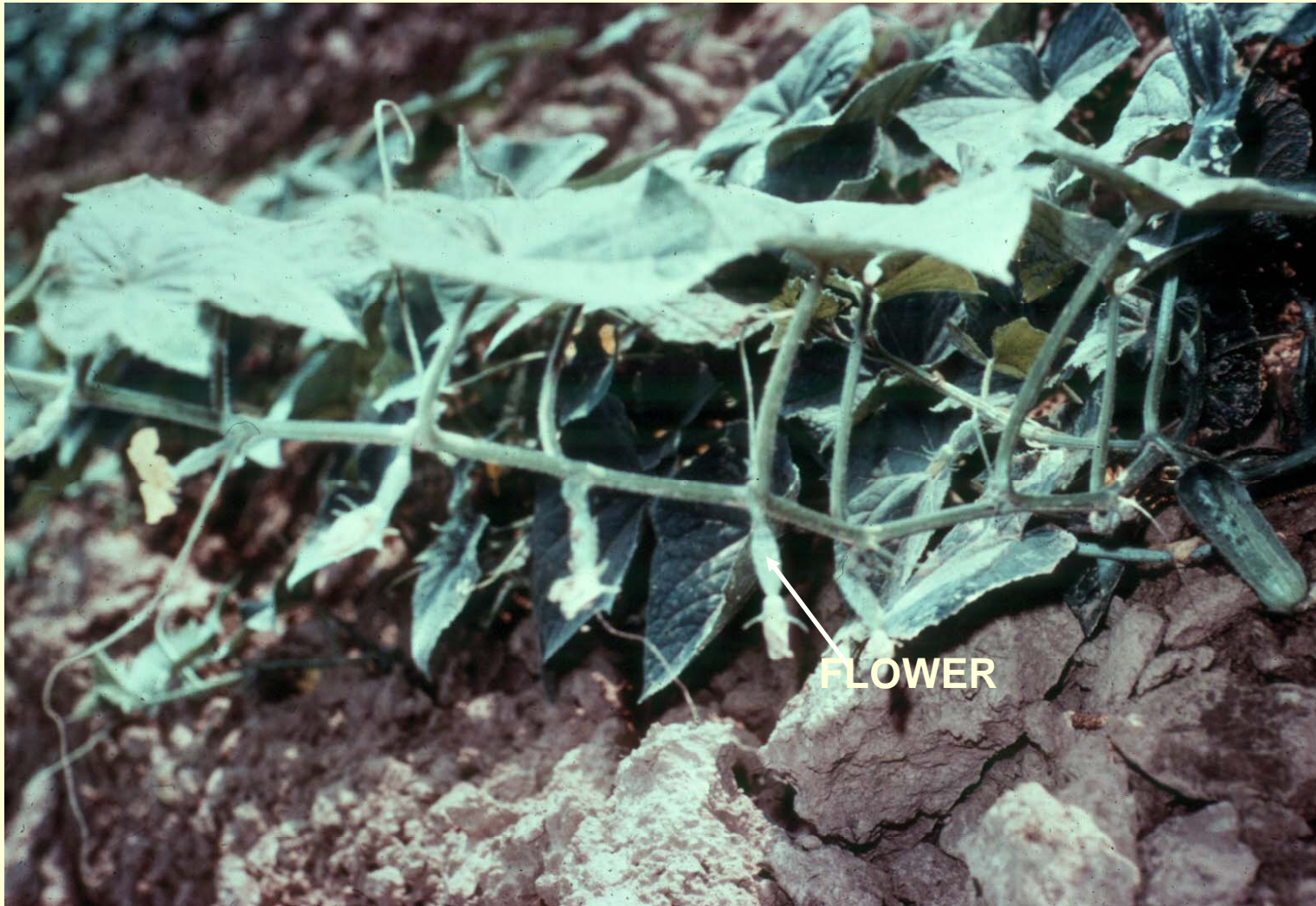
Garden Cucumbers

Thomas J. Koske, PhD
LSU AgCenter



BOTANY OF CUCS

- **Cucurbitaceae : Gourd family.**
- ***Cucumis sativus* , cucumber.**
 - ***C. anguria*, true west indian gherkin/burr.**
- **Broadleaf, (dicotyledon class)**
- **Herbaceous, monoecious annual vine.**
 - **Slicers/salad, Picklers & Multi purpose.**
 - **Gynoecious hybrids available (must interplant).**
 - **Vines are bush, compact to vigorous with tendrils.**
- **Sparse branching root system w short taproot.**
- **Palmately simple leaf.**
- **Imperfect, 5 petal flower.**
 - **Staminate clusters (10 to 1) & solitary pistillate.**
 - **Insect pollinated or**
 - **seedless/burpless (parthenocarpic).**
 - **Parthenocarpic types have less fruit-load inhibition.**
- **Pepo fruits w 3 seed chambers.**



Gynoecious hybrids with pistillate (female) flowers



**Male flower
(Staminate flower)**

**No developing
Fruit here**



Use the GUIDE # 1980 to get cultivars and basic planting.

Cucumber Production

Squash, Cucumber, Pumpkin	3-5 lbs. 8-24-24 Per 100 ft. row	SIDEDRESS as plants begin to run and again in 3 weeks.
	or 4-6 lbs. 8-8-8	

Note: One quart of fertilizer weighs about 2 lbs. First analysis listed is the preferred blend.
*For 100 ft. of row or 300 sq. ft. apply ¾ lb. ammonium nitrate or 1 lb. ammonium sulfate.

Cucumbers	Slicers: Dasher II, General Lee, Thunder, Speedway, Poinsett 76, Slice More, Intimidator, Daytona, Rockingham, Taledega, Indy, Sweet Slice, Sweet Success (AAS), Fanfare (AAS), Diva (AAS), Salad Bush (AAS), StoneWall.	
	Pickler: Calypso, Fancipak, Jackson, Sassy, Vlasstar.	Check vegetable GUIDE #1980

Cucumbers	3/10 thru 9/1 Season to plant	1/4 oz. seed/100 ft	¼" deep	12-18" apart	50-65 days from seed to harvest
-----------	-------------------------------------	---------------------------	---------	-----------------	---------------------------------



Seed hill

Often planted as hills of 2-3 plants.



Be sure to thin out stand to 1-2 ft. spacing.

Planted in drills or rows



PROBLEMS & DISORDERS

- Likes warm, well-drained soils with moderate pH (6-7).
- Fruit
 - BER = blossom-end rot
 - Bitterness
 - Poor pollination
 - Cracking
 - Sunscald
 - Caterpillars, beetles, aphids, diseases, virus & fruit rots
- Disease resistance available
 - Anthracnose, PM, DM, ALS, TLS, Scab, CMV (and other virus)

The End



Thomas J. Koske